



## CONSUMER PRICE INDEX JANUARY 2023 PRESS RELEASE

Released: 20<sup>th</sup> February, 2023 @ 12: 00 noon



### CONTACT PERSONS:

**(1) Mwaluma Andrew Bryma GEGBE, MA, MSc**

Director of National Accounts and  
Economic Statistics Division  
Statistics Sierra Leone (Stats SL)  
Mobile: +23279442430/ +23288000898  
Email: [mwaluma.gegbe@statistics.sl](mailto:mwaluma.gegbe@statistics.sl)  
Skype: mwaluma.gegbe

**Reviewed by**

**Andrew Bob JOHNNY, MSc**  
Deputy Statistician General  
Statistics Sierra Leone (Stats SL)  
Email: [andrew.johnny@statistics.sl](mailto:andrew.johnny@statistics.sl)

**(2) Isata M. ALLIEU-KEIKURA, MSc**  
Principal Statistician and Head,  
Price and Labour Statistics Section  
National Accounts and Economic Statistics  
Division, Statistics Sierra Leone (Stats SL)  
Mobile: +23276580842/ +23234580842  
Email: [isata.allieu-keikura@statistics.sl](mailto:isata.allieu-keikura@statistics.sl)

**Approved for release by:**

**Prof. Osman SANKOH, DSc, COR**  
Statistician General & CEO  
Statistics Sierra Leone (Stats SL)  
Email: [osman.sankoh@statistics.sl](mailto:osman.sankoh@statistics.sl)  
Skype: oasankoh

20th February, 2023

# CONTENTS

CONTENTS .....	i
LIST OF TABLES .....	ii
LIST OF FIGURES.....	ii
1.0 KEY FINDINGS .....	1
1.1 Headline Inflation Rates .....	1
1.2 Annual Year-On-Year (YOY) Consumer Price Inflation: Detailed by Main COICOP Headings	1
1.3 Monthly Consumer Price Inflation: Detailed By Main COICOP Headings.....	2
2.0 JANUARY 2023 CONSUMER PRICE INFLATION: DETAILED BY REGIONS.....	4
3.0 FOOD AND NON-FOOD COMPONENTS .....	6
4.0 CONTRIBUTIONS OF COICOP DIVISIONS TO ANNUAL INFLATION RATE (YoY).....	7
5.0 CPI COMPARISON FOR SELECTED ECOWAS MEMBER STATES .....	8

## LIST OF TABLES

Table 1: National CPI and rates of inflation by main COICOP functions (December 2021=100).....	4
Table 1.1: National and Regional Year-on-Year and Monthly Inflation rates .....	5
Table 1.2: 2023 Food and Non-food Inflation Rates.....	6
Table 2: National and Western region CPI, Year-on-Year and Monthly Inflation Rates.....	9
Table 3: National Consumer Price Index by Main COICOP Groups (December 2021=100) .....	10

## LIST OF FIGURES

Figure 1a: Year-on-Year Percentage Changes in the CPI.....	5
Figure 1b: Monthly Percentage Changes in the CPI.....	5
Figure 2: Contributions of the COICOP divisions to inflation rate.....	7
Figure 3: Recent inflation rates for selected ECOWAS countries.....	8

## 1.0 KEY FINDINGS

### 1.1 Headline Inflation Rates

- Annual National Consumer Price Inflation (year-on-year) for January 2023 stood at 38.48 percent, **up by 1.39 percentage points** from 37.09 percent in December 2022.
- The monthly consumer price inflation for January 2023 is 2.39 percent; **down by 1.28 percentage points** from 3.67 percent in December, 2022.
- Annual National Food and non-alcoholic beverages inflation for January 2023 is 47.51 percent, **up by 0.81 percentage point** from 46.70 percent in December, 2022.
- National inflation for Non-food is 32.30 percent in January 2023 from 30.60 percent in December; **up by 1.70 percentage points**.

### 1.2 Annual Year-On-Year (YOY) Consumer Price Inflation: Detailed by Main COICOP<sup>1</sup> Headings

#### Upward Movers

 Food and non-alcoholic beverages, with weight 40.30 percent, **increased** from 46.70 percent in December 2022 to 47.51 percent in January 2023; the inflation rate increased by 0.81 percentage point year-on-year.



Alcoholic beverages, tobacco and narcotics, with weight 1.00 percent **increased** from 14.84 percent in December 2022 to 20.20 percent in January 2023; the inflation rate increased by 5.36 percentage points year-on-year.



Clothing and footwear, with weight 7.70 percent, **increased** from 21.52 percent in December 2022 to 32.97 percent in January 2023; the inflation rate increased by 11.45 percentage points.



Housing, water, electricity, gas and other fuels, with weight 8.90 percent, **increased** from 30.89 percent in December 2022 to 32.70 percent in January 2023; the inflation rate increased by 1.81 percentage points year-on-year.



Health, with weight 7.60 percent, **increased** from 26.98 percent in December 2022 to 30.92 percent in January 2023; the inflation rate increased by 3.94 percentage points year-on-year.



Communication, with weight 4.70 percent, **increased** from 3.96 percent in December 2022 to 23.92 percent in January 2023; the inflation rate increased by 19.96 percentage points year-on-year.

<sup>1</sup> Classification of Individual Consumption by Purpose



Recreation and culture, with weight 2.60 percent, **increased** from 34.55 percent in December 2022 to 35.56 percent in January 2023; the inflation rate increased by 1.01 percentage points year-on-year.



Restaurant and hotels, with weight 6.10 percent, **increased** from 41.74 percent in December 2022 to 42.16 percent in January 2023; the inflation rate increased by 0.42 percentage point year-on-year.



Miscellaneous goods and services, with weight 3.90 percent, **increased** from 38.39 percent in December 2022 to 42.79 percent in January 2023; the inflation rate increased by 4.40 percentage points year-on-year.

### Downward Movers



Furniture, household equipment and household maintenance, with weight 5.60 percent, **declined** by 9.29 percentage points from 54.1 percent in December 2022 to 44.81 percent in January 2023.



Transport, with weight 8.60 percent, **declined** by 12.77 percentage points from 44.89 percent in December 2022 to 32.12 percent in January 2023 points.

### Non-Movers



For Education services, with weight 3.10 percent, **no change** was noticed between December, 2022 and January, 2023.

## 1.3 Monthly Consumer Price Inflation: Detailed By Main COICOP<sup>2</sup> Headings

### Upward Movers



Alcoholic beverages, tobacco and narcotics, with weight 1.00 percent **increased** from 2.47 percent in December 2022 to 4.28 percent in January 2023; the inflation rate increased by 1.81 percentage points year-on-year.



Clothing and footwear, with weight 7.70 percent, **increased** from 4.06 percent in December 2022 to 5.09 percent in January 2023; the inflation rate increased by 1.03 percentage points year-on-year.



Health, with weight 7.60 percent, **increased** from 4.07 percent in December 2022 to 4.43 percent in January 2023; the inflation rate increased by 0.36 percentage points year-on-year.



Communication, with weight 4.70 percent, **increased** from -0.20 percent in December 2022 to 19.40 percent in January 2023; the inflation rate increased by 19.60 percentage points year-on-year.



Recreation and culture, with weight 2.60 percent, **increased** from 1.78 percent in December 2022 to 3.31 percent in January 2023; the inflation rate increased by 1.53 percentage points year-on-year.

<sup>2</sup> Classification of Individual Consumption by Purpose



Miscellaneous goods and services, with weight 3.90 percent **increased** from 4.12 percent in December 2022 to 4.74 percent in January 2023; the inflation rate increased by 0.62 percentage point year-on-year.

## Downward Movers



Food and non-alcoholic beverages, with weight 40.30 percent, **declined** by 0.45 percentage point from 2.95 percent in December 2022 to 2.50 percent in January 2023.



Housing, water, electricity, gas and other fuels, with weight 8.90 percent, **declined** by 8.63 percentage points from 11.11 percent in December 2022 to 2.48 percent in January 2023.



Furniture, household equipment and household maintenance, with weight 5.60 percent, **declined** by 0.52 percentage points from 3.46 percent in December 2022 to 2.94 percent in January 2023.



Transport, with weight 8.60 percent, **declined** by 13.00 percentage points from 3.39 percent in December 2022 to -9.61 percent in January 2023.



Restaurant and hotels, with weight 6.10 percent, **declined** by 1.25 percentage points from 3.27 percent in December 2022 to 2.02 percent in January 2023.

## Non-Movers



For Education services, with weight 3.10 percent, **no change** was noticed between December, 2022 and January 2023.



Table 1 below shows the National CPI of the months of January, 2022 and January, 2023; as well as the 12 months change in the CPI for the main COICOP functions.

**Table 1: National CPI and rates of inflation by main COICOP functions (December 2021=100)**

COICOP	WEIGHT	Jan-22	Oct-22	Nov-22	Dec-22	Jan-23	Monthly Inflation	3 Months Change Inflation	12 Months Inflation
		Month Previous Year-	Month m-3 for Current Year	Month m-2 for Current Year	Month m-1 for Current Year	Month m for Current Year			
Food and Non-Alcoholic Beverages	40.3	101.94	139.80	142.49	146.70	150.37	2.50	7.56	47.51
Alcoholic Beverages, Tobacco and Narcotics	1.0	99.63	107.79	112.07	114.84	119.76	4.28	11.10	20.20
Clothing and Footwear	7.7	96.04	111.84	116.78	121.52	127.70	5.09	14.18	32.97
Housing, Water, Electricity, Gas and Other Fuels	8.9	101.08	117.19	117.80	130.89	134.13	2.48	14.46	32.70
Furniture, Household Equipment and Household Maintenance	5.6	109.54	140.62	148.95	154.10	158.63	2.94	12.81	44.81
Health	7.6	101.29	118.74	122.01	126.98	132.61	4.43	11.68	30.92
Transport	8.6	99.13	140.95	140.14	144.89	130.97	-9.61	-7.08	32.12
Communication	4.7	100.17	103.28	104.17	103.96	124.13	19.40	20.19	23.92
Recreation and Culture	2.6	102.54	129.83	132.20	134.55	139.00	3.31	7.06	35.56
Education	3.1	100.00	90.18	90.18	90.18	90.18	0.00	0.00	-9.82
Restaurant and Hotels	6.1	101.72	139.56	137.25	141.74	144.61	2.02	3.62	42.16
Miscellaneous Goods & Services	3.9	101.51	127.14	132.92	138.39	144.95	4.74	14.01	42.79
<b>All Items</b>	<b>100.0</b>	<b>101.36</b>	<b>129.84</b>	<b>132.24</b>	<b>137.09</b>	<b>140.36</b>	<b>2.39</b>	<b>8.10</b>	<b>38.48</b>

## 2.0 JANUARY 2023 CONSUMER PRICE INFLATION: DETAILED BY REGIONS

The National monthly CPI increased from 137.09 in December 2022 to 140.36 in January 2023, resulting to 2.39 percent inflation this month.

Similarly, the national yearly CPI increased from 101.36 in January 2022 to 140.36 in January 2023 causing a year-on-year (YoY) inflation of 38.48 percent for January 2023; indicating an upwards trend compared to 37.09 percent in December 2022. All the regions

show upwards movement: Eastern region from 36.29 percent in December 2022 to 36.39 percent in January 2023; Northern region from 31.45 percent in December 2022 to 35.88 percent in January 2023; Western region from 35.93 percent in December 2022 to 35.96 percent in January 2023; Southern region from 38.20 percent in December to 43.72 in January 2023 and Northwest region from 47.31 in December 2022 to 47.88 in January 2023.

**Table 1.1: National and Regional Year-on-Year and Monthly Inflation rates**

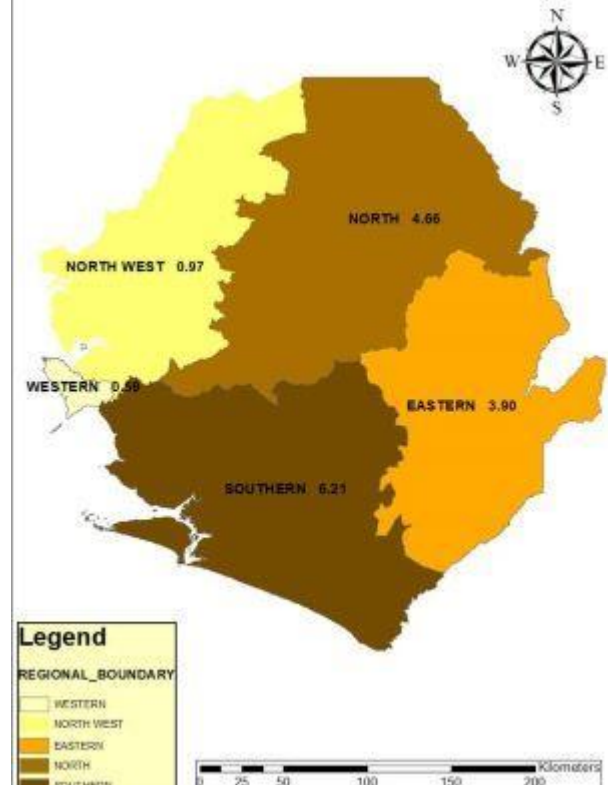
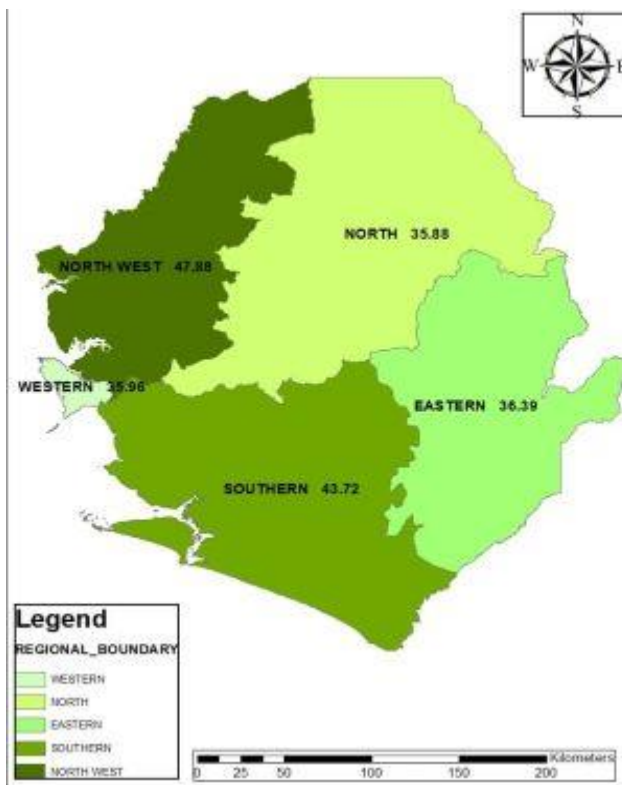
December 2021=100												
Month	National		Western Area		Eastern Region		Southern region		Northern Region		North-west Region	
	Year-On-Year	Monthly	Year-On-Year	Monthly	Year-On-Year	Monthly	Year-On-Year	Monthly	Year-On-Year	Monthly	Year-On-Year	Monthly
Dec, 2022	37.09	3.67	35.93	4.26	36.29	2.14	38.20	1.54	31.45	6.43	47.31	3.02
Jan, 2023	38.48	2.39	35.96	0.59	36.39	3.90	43.72	6.21	35.88	4.66	<b>47.88</b>	0.97

It is observed from the table above that the year-on-year inflation rates for both Northern-west and Southern regions are above the national estimate for the month of January 2023; while Eastern, Northern and Western regions' estimates are below.

The figures below illustrate the yearly (1A) and monthly (1B) inflation rates at regional levels.

**Figure 1A: Regional Year-on-Year inflation rates**

**Figure 1B: Regional Month-on-Month inflation rates**





### 3.0 FOOD<sup>3</sup> AND NON-FOOD<sup>4</sup> COMPONENTS

Food and non-alcoholic items inflation increased by 0.81 percentage point from 46.70 percent in December 2022 to 47.51 percent in January 2023. In this division, food inflation increased by 1.22 percentage points from 46.17 percent in December 2022, while the non-alcoholic beverages inflation decreased by 10.80 percentage points from 61.51 percent in December 2022.

In the Food sub-division (Group), higher increases were observed mostly among vegetables, because of their seasonality and imported food items. The following were among the key increases: biscuit by 7 percent, spaghetti by 6 percent, macaroni by 18 percent, goat meat by 16 percent, beef liver by 10 percent, corned beef by 20 percent, catfish by 9 percent, smoked herring by 8 percent, egg imported by 26 percent, palm oil by 11 percent, small mango by 11 percent, lime by 64 percent, cassava leaf by 56 percent, potatoes leaves by 43 percent, krain-krain by 45 percent, sorrel leaves by 40 percent, jackatoe by 24 percent, leafy/green onion by 19 percent, sweet potatoes by 27 percent, irish potatoes by 56 percent, foo-foo by 14 percent, candy sweets by 29 percent, salt by 11 percent, ogrie by 27 percent, wheat baby food by 12 percent, nescafe by 7 percent, orange juice by 7 percent, etc.

The non-food category hits an inflation of 32.30 percent in January 2023 from 30.60 percent in December 2022; that is 1.70 percentage points increase. In this category, eight divisions went up and two went down. Noticeable increases were observed in Communication by 19.96 percentage points; Clothing and footwear by 11.45 percentage points and Alcoholic beverages, Tobacco and Narcotics by 5.36 percentage points.

**Table 1.2: 2023 Food and Non-food Inflation Rates**

Items	Jan	Feb	Mar	April	May	June	July	Aug	Sept	Oct	Nov	Dec
Food and Non-alcoholic Beverages	47.51											
Non-food	32.30											

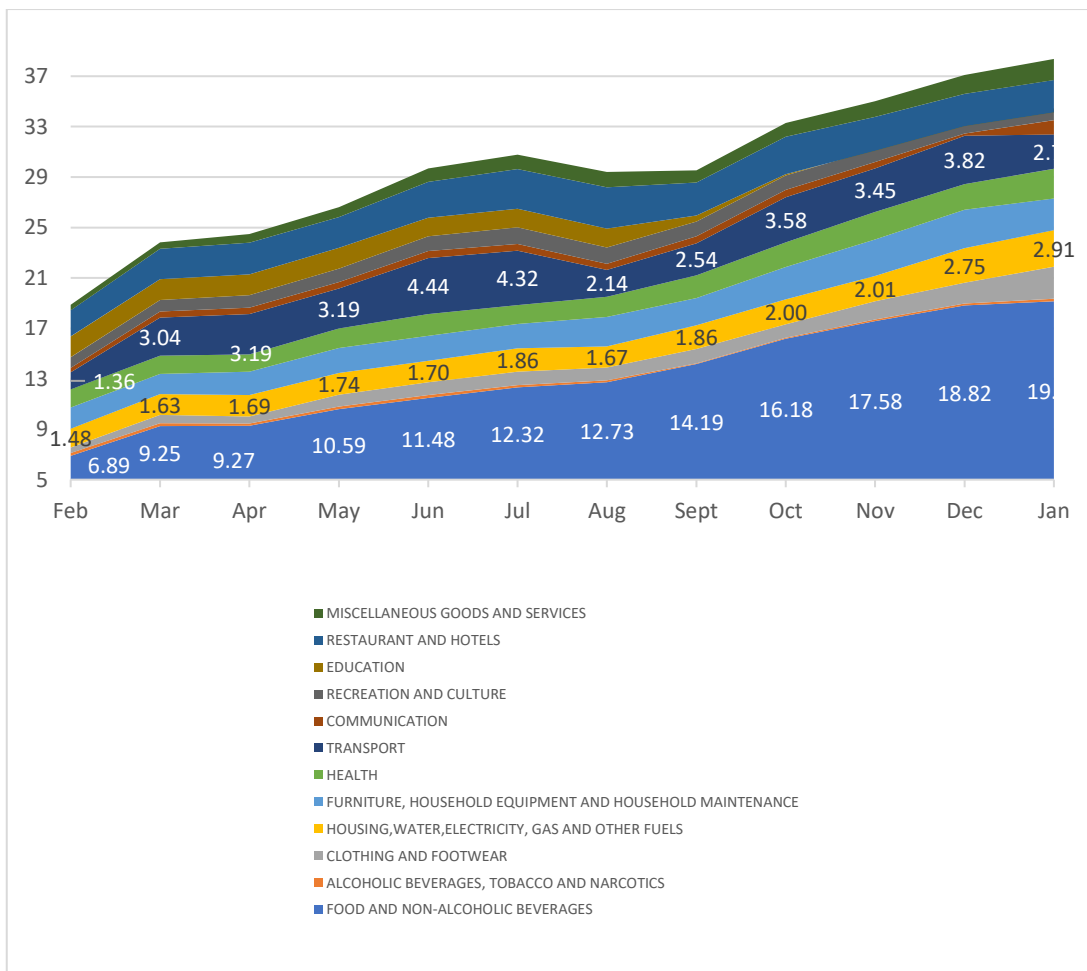
<sup>3</sup> Food and Non-Alcoholic Beverages

<sup>4</sup> All other main COICOP Functions/divisions excluding Food and Non-Alcoholic Beverages

#### 4.0 CONTRIBUTIONS OF COICOP DIVISIONS TO ANNUAL INFLATION RATE (YoY)

Annual National Consumer Price Inflation (year-on-year) for January 2023 stood at 38.48 percent, up by 1.39 percentage points from 37.09 percent in December 2022. Of the 38.48 percent, the following COICOP divisions made the most impacts in relation to their weights: Food and Non-alcoholic Beverages (19.15 percent); Transport (2.73 percent) and Furniture, household equipment and Household Maintenance, which has just overtaken Restaurants and Hotels, (2.91 percent).

**Figure 2: Contributions of the COICOP divisions to inflation rate**

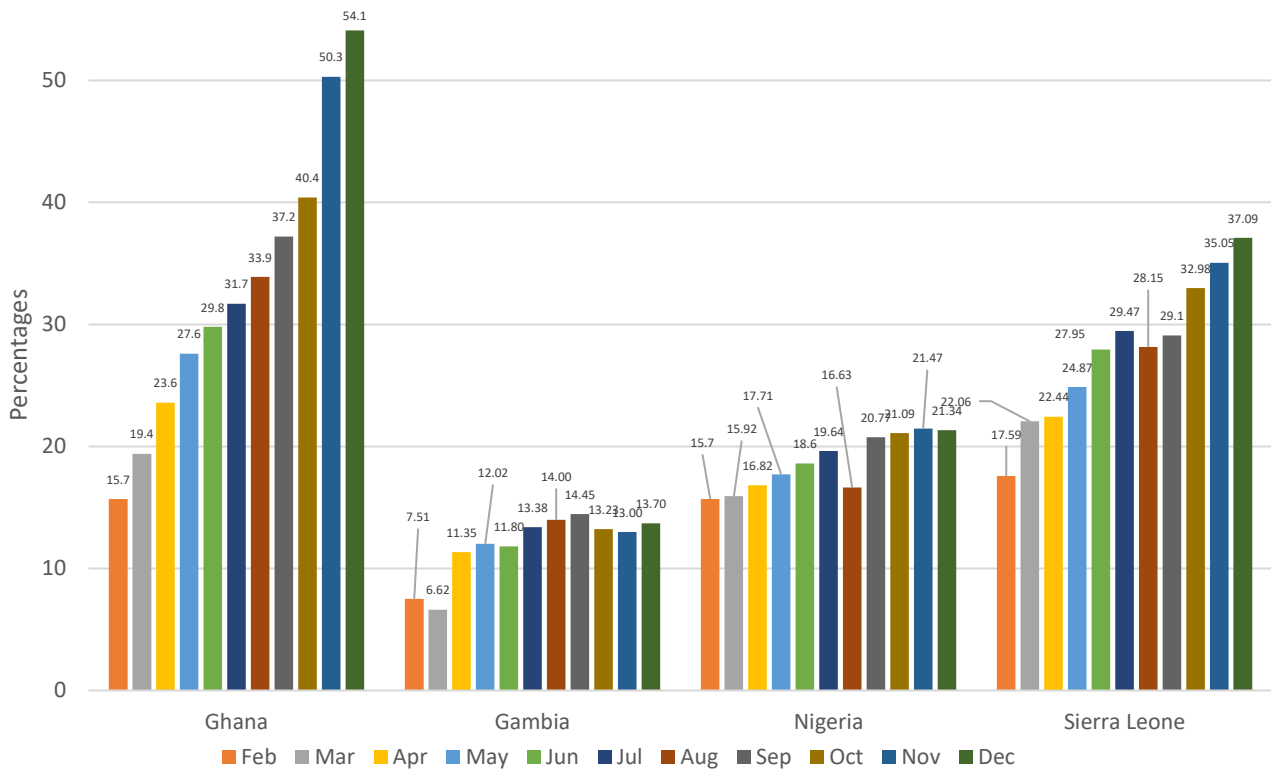


**Concluding Note:** We noted that a sustained increase in the year-on-year national inflation rate in 2022 has continued to January 2023. Further observations show that the national estimate is above the estimates of the Western, Eastern and Northern regions' but below the Southern and North-west regions' estimates. Food and non-alcoholic beverages continues to make the most impact on national inflation and is increasing every month; however due to increase in mobile communication tariffs, Communication served as the highest driver in the month of January 2023.

## 5.0 CPI COMPARISON FOR SELECTED ECOWAS MEMBER STATES

All selected countries, except Nigeria, reported decreased inflation rates for the month of December 2022. The inflation estimates for all countries this year indicate upwards trend; that is, general price increases. All countries are now reporting double digit inflation, with Sierra Leone, 37.09 and Ghana, 54.1, reporting very high inflation rates.

**Figure 3: Recent inflation rates of selected ECOWAS countries**



**NOTE:** The National CPI measures the change in prices, on average, from month to month, of the goods and services bought by households, in Freetown, Bo, Kenema, Kono, Makeni, Port Loko-Kambia and include all expenditure groups. Prices are collected for least 440 items. All prices collected are the prevailing retail market prices from six (6) markets in Freetown and, three (3) Markets each in Bo, Kenema, Kono, Makeni, Port Loko-Kambia and for weekly prices and other outlets for monthly items whose prices are less likely to fluctuate rapidly. We are using the Modified Laspeyres formula to compute indices according to the Classification of Individual Consumption by Purpose (COICOP) with 12 functions.

Sierra Leone has recently rebased the CPI to December 2021, increased the number of items in the basket and expanded the coverage to North-West region.

**Table 2: National and Western region CPI, Year-on-Year and Monthly Inflation Rates**

	National CPI (December 2021=100)			Western Area/Freetown CPI (December 2021=100)		
	CPI	Year-on- Year % Change	Monthly Change	CPI	Year-on –Year % Change	Monthly Change
<b>2019</b>						
January	68.60	14.35	1.78	67.09	11.46	0.72
February	69.34	14.08	1.08	69.30	13.96	3.29
March	70.62	14.77	1.85	70.56	14.96	1.82
April	72.42	16.56	2.55	72.03	16.63	2.08
May	72.36	14.97	-0.08	71.61	14.41	-0.58
June	73.28	14.64	1.27	72.42	14.10	1.13
July	74.90	14.89	2.21	73.01	12.20	0.81
August	76.26	15.44	1.82	75.30	13.42	3.14
September	76.40	15.16	0.18	74.40	12.59	-1.20
October	76.30	15.85	-0.13	75.76	15.95	1.83
November	76.45	13.09	0.20	77.94	15.66	2.88
December	76.77	13.90	0.42	79.11	18.77	1.50
<b>Average</b>	<b>73.64</b>	<b>14.81</b>	<b>1.10</b>	<b>73.21</b>	<b>14.51</b>	<b>1.45</b>
<b>2020</b>						
January	77.93	13.60	1.51	80.57	20.09	1.85
February	79.53	14.70	2.05	82.33	18.8	2.18
March	81.61	15.56	2.62	83.56	18.42	1.49
April	83.34	15.08	2.12	84.95	17.94	1.66
May	83.56	15.48	0.26	85.93	20.00	1.15
June	83.80	14.36	0.29	84.94	17.29	-1.15
July	84.86	13.30	1.26	86.41	18.35	1.73
August	86.42	13.32	1.84	87.49	16.19	1.25
September	86.87	13.70	0.52	88.39	18.80	1.03
October	85.24	11.72	-1.88	85.64	13.04	-3.11
November	84.58	10.63	-0.77	85.46	9.65	-0.21
December	84.79	10.45	0.25	86.09	8.82	0.74
<b>Average</b>	<b>83.54</b>	<b>13.49</b>	<b>0.84</b>	<b>85.15</b>	<b>16.45</b>	<b>0.72</b>
<b>2021</b>						
January	86.89	11.50	2.48	88.05	9.28	2.28
February	88.18	10.88	1.48	88.55	7.55	0.57
March	88.92	8.96	0.84	90.16	7.90	1.82
April	91.35	9.61	2.73	91.84	8.11	1.86
May	91.75	9.80	0.44	92.56	7.72	0.78
June	92.35	10.20	0.65	93.58	10.17	1.10
July	93.77	10.50	1.54	93.96	8.74	0.41
August	95.82	10.88	2.19	95.87	9.58	2.03
September	96.98	11.64	1.21	96.83	9.55	1.00
October	97.64	14.55	0.68	98.1	14.55	1.31
November	97.92	15.77	0.29	98.75	15.55	0.66
December	100.00	17.94	2.12	100.00	16.16	1.27
<b>Average</b>	<b>93.46</b>	<b>11.85</b>	<b>1.39</b>	<b>94.02</b>	<b>10.41</b>	<b>1.26</b>
<b>2022</b>						
January	101.36	16.65	1.36	100.57	14.22	0.57
February	103.69	17.59	2.30	102.76	16.05	2.18
March	108.54	22.06	4.68	108.21	20.02	5.30
April	111.85	22.44	3.05	110.28	20.08	1.91
May	114.57	24.87	2.43	112.97	22.05	2.44
June	118.16	27.95	3.13	117.13	25.17	3.68
July	121.40	29.47	2.74	119.38	27.05	1.92
August	122.79	28.15	1.14	120.23	25.41	0.71
September	125.20	29.10	1.96	121.51	25.49	1.06
October	129.84	32.98	3.71	129.71	32.22	6.75
November	132.24	35.05	1.85	130.37	31.94	0.51
December	137.09	37.09	3.67	135.93	35.93	4.26
<b>Average</b>	<b>118.89</b>	<b>26.95</b>	<b>2.67</b>	<b>117.42</b>	<b>24.64</b>	<b>2.61</b>
<b>2023</b>						
January	140.36	38.48	2.39	136.73	35.96	0.59

**Table 3: National Consumer Price Index by Main COICOP Groups (December 2021=100)**

	Food and Non-Alcoholic Beverages	Alcoholic Beverages, Tobacco and Narcotics	Clothing and Footwear	Housing, Water, Electricity, Gas and Other Fuels	Furniture, Household Equipment and Household Maintenance	Health	Transport	Communication	Recreation and Culture	Education	Restaurant and Hotels	Miscellaneous Goods and Services	All Items
Weight	40.3	1	7.7	8.9	5.6	7.6	8.6	4.7	2.6	3.1	6.1	3.9	100.00
Jan-19	68.98	70.55	74.4	79.57	65.8	60.83	68.41	75.11	75.4	35.02	64.13	78.55	68.6
Feb-19	69.8	71.8	73.94	79.41	69.37	61.03	68.04	82.98	81.02	35.22	64.28	80.03	69.34
Mar-19	71.65	72.51	75.53	80.42	70.43	61.87	68.19	82.23	77.84	35.4	65.72	80.64	70.62
Apr-19	74.6	76	76.59	82.26	72.23	60.73	69.38	82.29	79.49	35.74	65.28	83.48	72.42
May-19	70.28	74.52	79.01	80.27	77.96	69.97	71.01	91.25	76.49	38.98	64	86.16	72.36
Jun -19	70.99	74.67	80.72	80.13	80.41	73	71.56	92.15	74.72	35.45	64.45	85.49	73.28
Jul-19	72.43	76.29	82.46	82.37	81.22	74.93	75.33	85.33	75.56	35.45	67.48	88.26	74.9
Aug-19	74.16	77.71	79.73	82.5	78.59	82.93	73.6	88.41	73.81	35.45	67.06	83.05	76.26
Sept-19	74.84	76.39	79.9	82.89	79.75	79.76	75.46	80.55	73.49	35.45	75.35	86.23	76.4
Oct- 19	74.26	76.17	79.62	84.18	80.15	80.05	75.48	80.55	73.37	35.45	75.06	86.44	76.3
Nov- 19	72.62	73.03	79.47	85.78	76.99	82.49	75.33	80.55	75.1	59.80	73.09	84.95	76.45
Dec- 19	72.77	75.82	78.39	87.14	77.83	82.75	76.98	80.54	74.89	59.80	73.09	84.8	76.77
Jan- 20	74.12	78.14	80.46	87.8	77.77	82.4	80.57	80.53	75.27	59.80	77.79	87.01	77.93
Feb-20	75.6	74.67	81.41	88.57	75.13	89.23	80.99	84.64	75.53	59.80	77.18	85.77	79.53
Mar-20	78.72	75.82	83.33	86.99	76.27	91.85	80.12	89.29	77.89	59.80	78.96	89.3	81.61
Apr-20	82.46	77.23	84.58	83.89	77.77	92.50	79.16	89.3	78.61	59.80	79.99	90.43	83.34
May-20	81.95	77.83	85.57	84.84	78.19	93.49	79.43	90.06	78.7	59.80	81.85	91.71	83.56
Jun-20	83.01	79.03	87.07	84.80	79.46	88.90	82.3	90.97	79.16	59.80	82.91	93.07	83.8
Jul-20	84.94	79.08	88.5	84.81	80.16	89.19	83.31	90.07	80.40	59.80	83.09	90.84	84.86
Aug-20	87.31	78.99	90.07	84.71	81.00	90.86	82.94	92.30	80.75	59.80	82.41	92.97	86.42
Sept-20	88.12	78.05	90.63	85.77	81.90	90.73	82.27	90.70	81.11	59.80	79.44	93.14	86.87
Oct-20	84.42	77.01	94.15	83.84	81.97	90.56	81.09	89.99	80.78	59.80	79.08	94.13	85.24
Nov-20	83.49	75.86	93.3	82.71	81.68	91.37	80.89	90.26	79.16	59.80	76.71	92.3	84.58
Dec-20	83.75	80.38	93.4	83.70	82.97	88.91	82.09	93.31	78.43	65.21	76.66	90.24	84.79
Jan-21	88.12	80.29	92.83	84.33	82.56	89.69	81.64	93.65	78.62	65.21	76.7	90.99	86.89
Feb-21	90.41	80.84	91.95	88.41	85.01	86.73	84.93	93.87	79.03	65.21	78.43	92.36	88.18
Mar-21	90.88	83.38	90.61	89.53	85.15	90.14	85.10	92.19	79.02	65.21	78.01	92.22	88.92
Apr-21	95.36	87.89	93.51	90.09	86.13	89.45	85.5	92.19	79.36	65.21	79.63	91.61	91.35
May-21	96.34	87.34	91.12	90.31	86.43	90.08	84.89	92.19	79.78	65.21	84.02	92.18	91.75
Jun-21	97.22	88.65	92.22	91.89	88.29	89.09	85.32	92.19	80.39	65.56	84.31	89.92	92.35
Jul-21	98.03	94.51	93.68	92.22	92.84	89.96	92.35	92.2	81.54	65.56	85.34	91.87	93.77
Aug-21	100.31	98.11	95.31	94.64	92.70	91.46	99.61	92.22	82.67	65.56	85.67	92.41	95.82
Sept-21	99.83	100.05	95.13	95.87	95.75	94.21	99.45	92.21	86.21	78.23	93.04	97.60	96.98
Oct-21	99.76	99.84	98.37	95.71	96.40	94.46	99.17	92.22	90.18	86.86	93.79	99.51	97.64
Nov-21	99.21	99.17	98.38	96.05	98.16	94.92	99.71	93.83	94.80	94.02	95.35	100.74	97.92
Dec-21	100.00	100.00	100.00	100.00	100.00	100.00	100.00	100.00	100.00	100.00	100.00	100.00	100.00
Jan-22	101.94	99.63	96.04	101.08	109.54	101.29	99.13	100.17	102.54	100.00	101.72	101.51	101.36
Feb-22	105.86	98.85	97.29	103.12	110.56	103.13	98.48	100.88	104.85	100.00	104.92	102.84	103.69
Mar-22	111.75	103.03	98.32	105.97	109.63	107.18	115.52	101.32	107.26	100.00	108.62	104.71	108.54
Apr-22	117.29	104.39	100.38	107.21	114.59	105.64	117.57	102.42	109.12	100.00	112.64	107.62	111.85
May-22	121.67	105.38	102.14	107.96	116.93	108.31	116.74	101.88	112.45	100.00	117.79	110.36	114.57
Jun-22	124.92	109.68	104.38	109.41	119.44	109.47	129.86	103.10	116.08	96.81	123.56	115.00	118.16
Jul-22	128.01	111.18	106.58	111.54	124.78	107.54	139.33	102.83	122.51	96.81	129.40	118.73	121.40
Aug-22	132.01	113.55	107.79	112.45	131.18	110.87	124.67	101.39	124.23	96.81	131.91	121.32	122.79
Sept-22	134.97	103.16	109.41	115.94	132.78	116.62	129.22	102.91	125.29	90.18	132.93	121.97	125.20
Oct-22	139.80	107.79	111.84	117.19	140.62	118.74	140.95	103.28	129.83	90.18	139.56	127.14	129.84
Nov-22	142.49	112.07	116.78	117.8	148.95	122.01	140.14	104.17	132.2	90.18	137.25	132.92	132.24
Dec-22	146.7	114.84	121.52	130.89	154.1	126.98	144.89	103.96	134.55	90.18	141.74	138.39	137.09
Jan-23	150.37	119.76	127.70	134.13	158.63	132.61	130.97	124.13	139.00	90.18	144.61	144.95	140.36