



STATISTICS SIERRA LEONE
(Stats SL)

Credible Data for National Development

CONSUMER PRICE INDEX NOVEMBER 2021 PRESS RELEASE

Released: 20th December, 2021 @ 12: 00 noon

Contact Persons:

Mwaluma Andrew Bryma GEGBE, MA, MSc

Director of National Accounts and Economic Statistics Division
Statistics Sierra Leone

Mobile: +23279442430/ +23288000898

Email: mwaluma.gegbe@statistics.sl

Skype: mwaluma.gegbe

Isata M. ALLIEU-KEIKURA, MSc

Principal Statistician and Head, Price & Labour Statistics Section
National Accounts and Economic Statistics Division
Statistics Sierra Leone

Mobile: +23276580842

Email: isata.allieu-keikura@statistics.sl

Reviewed by

Andrew Bob JOHNNY, MSc

Deputy Statistician General
Statistics Sierra Leone

Email: andrew.johnny@statistics.sl

Approved for release by:

Prof. Osman SANKOH, DSc, COR

Statistician General & CEO
Statistics Sierra Leone

Email: osman.sankoh@statistics.sl

20th December, 2021

CONTENTS

CONTENTS	1
KEY FINDINGS.....	2
HEADLINE NATIONAL INFLATION RATES	2
ANNUAL (YEAR-ON-YEAR) CONSUMER PRICE INFLATION: DETAILED BY MAIN COICOP HEADINGS ..	2
MONTHLY CONSUMER PRICE INFLATION: DETAILED BY MAIN COICOP HEADINGS.....	3
OCTOBER 2021 CONSUMER PRICE INDEX (CPI): DETAILED BY REGIONS.....	4
SELECTED INFLATION RATE AND CPI BY MAIN COICOP HEADING.....	5
FOOD AND NON-FOOD COMPONENTS.....	5

LIST OF TABLES

Table 1: National & Regional Year-on-Year and Monthly Inflation rates	4
Table 1.1: National CPI and rates of inflation by main COICOP functions (2008=100)	5
Table 1.2: 2021 Food and Non-food inflation rates	6
Table 2: Year-on-Year and Monthly Inflation Rates	6
Table 3: National Consumer Price Index by Main COICOP Groups (2008=100).....	8

LIST OF FIGURES

Figure 1a: Year-on-Year Percentage Changes in the CPI.....	1
Figure 1b: Monthly Percentage Changes in the CPI.....	1

KEY FINDINGS

HEADLINE NATIONAL INFLATION RATES

Annual National Consumer Price Inflation (year-on-year) for November 2021 stood at 15.77 percent, up by 1.22 percentage point from 14.55 percent in October 2021.

The monthly consumer price inflation for November 2021 is 0.29 percent; down by 0.40 percentage point from 0.69 percent in October, 2021.

ANNUAL (YEAR-ON-YEAR) CONSUMER PRICE INFLATION: DETAILED BY MAIN COICOP¹ HEADINGS

Upward movers

- ✓ Food and non-alcoholic beverages, with weight 41.86 percent, **increased** from 18.17 percent in October 2021 to 18.84 percent in November 2021. The inflation rate increased by 0.67 percentage point year-on-year.
- ✓ Alcoholic beverages, tobacco and narcotics, with weight 1.71 percent, **increased** from 29.64 percent in October 2021 to 30.73 percent in November 2021. The inflation rate increased by 1.09 percentage points year-on-year.
- ✓ Clothing and footwear, with weight 7.34 percent, **increased** from 4.48 percent in October 2021 to 5.44 percent in November 2021. The inflation rate increased by 0.96 percentage points year-on-year.
- ✓ Housing, water, electricity, gas and other fuels, with weight 13.70 percent, **increased** from 14.16 percent in October 2021 to 16.11 percent in November 2021. The inflation rate increased by 1.95 percentage point year-on-year.
- ✓ Furniture, household equipment and household maintenance, with weight 5.86 percent, **increased** from 17.60 percent in October 2021 to 20.19 percent in November 2021. The inflation rate increased by 2.59 percentage points year-on-year.
- ✓ Transport, with weight 7.75 percent, **increased** from 22.30 percent in October 2021 to 23.27 percent in November 2021. The inflation rate increased by 0.97 percentage point year-on-year.
- ✓ Communication, with weight 2.04 percent, **increased** from 2.47 percent in October 2021 to 3.95 percent in November 2021. The inflation rate increased by 1.48 percentage point year-on-year.
- ✓ Recreation and culture, with weight 1.47 percent, **increased** from 11.65 percent in October 2021 to 19.75 percent in November 2021. The inflation rate increased by 8.10 percentage points year-on-year
- ✓ Education services, with weight 2.88 percent, **increased** from 45.25 percent in October 2021 to 57.23 percent in November 2021. The inflation rate increased by 11.98 percentage points year-on-year
- ✓ Restaurant and hotels, with weight 0.92 percent, **increased** from 18.61 percent in October 2021 to 24.30 percent in November 2021. The inflation rate increased by 5.69 percentage points year-on-year
- ✓ Miscellaneous goods and services, with weight 3.11 percent, **increased** from 5.72 percent in October 2021 to 9.14 percent in November 2021. The inflation rate increased by 3.42 percentage points year-on-year

Downward movers

- ✓ Health, with weight 11.36 percent, **declined** by 0.43 percentage point from 4.31 percent in October 2021 to 3.88 percent in November 2021.

¹ Classification of Individual Consumption by Purpose

MONTHLY CONSUMER PRICE INFLATION: DETAILED BY MAIN COICOP² HEADINGS

Upward movers

- ✓ Housing, water, electricity, gas and other fuels, with weight 13.70 percent, **increased** from -0.16 percent in October 2021 to 0.34 percent in November 2021. The inflation rate increased by 0.50 percentage point year-on-year.
- ✓ Furniture, household equipment and household maintenance, with weight 5.86 percent, **increased** from 0.68 percent in October 2021 to 1.83 percent in November 2021. The inflation rate increased by 1.15 percentage point year-on-year.
- ✓ Health, with weight 11.36 percent, **increased** from 0.27 percent in October 2021 to 0.48 percent in November 2021. The inflation rate increased by 0.21 percentage point year-on-year.
- ✓ Transport, with weight 7.75 percent **increased** from -0.27 percent in October 2021 to 0.54 percent in November 2021. The inflation rate increased by 0.81 percentage point year-on-year.
- ✓ Communication, with weight 2.04 percent, **increased** from 0.01 percent in October 2021 to 1.74 percent in November 2021. The inflation rate increased by 1.73 percentage point year-on-year.
- ✓ Recreation and culture, with weight 1.47 percent, **increased** from 4.61 percent in October 2021 to 5.12 percent in November 2021. The inflation rate increased by 0.51 percentage point year-on-year.
- ✓ Restaurant and hotels, with weight 0.92 percent, **increased** from 0.81 percent in October 2021 to 1.66 percent in November 2021. The inflation rate increased by 0.85 percentage point year-on-year.

Downward movers

- ✓ Food and non-alcoholic beverages, with weight 41.86 percent, **declined** by 0.49 percentage point from -0.06 percent in October 2021 to -0.55 percent in November 2021
- ✓ Alcoholic beverages, tobacco and narcotics, with weight 1.71 percent, **declined** by 0.46 percentage point from -0.21 percent in October 2021 to -0.67 percent in November 2021
- ✓ Clothing and footwear, with weight 7.34 percent, **declined** by 3.40 percentage points from 3.41 percent in October 2021 to 0.01 percent in November 2021
- ✓ Education services, with weight 2.88 percent **declined** by 2.78 percentage points from 11.03 percent in October 2021 to 8.25 percent in November 2021
- ✓ Miscellaneous goods and services, with weight 3.11 percent **declined** by 0.72 percentage point from 1.96 percent in October 2021 to 1.24 percent in November 2021

² Classification of Individual Consumption by Purpose

NOVEMBER 2021 CONSUMER PRICE INDEX (CPI): DETAILED BY REGIONS

The National Monthly CPI (2008=100) increased from 357.66 in October 2021 to 358.69 in November 2021, resulting to 0.29 percent inflation this month. The national year-on-year inflation for November 2021 stood at 15.77 percent, indicating an upwards trend compared to 14.55 percent in October 2021.

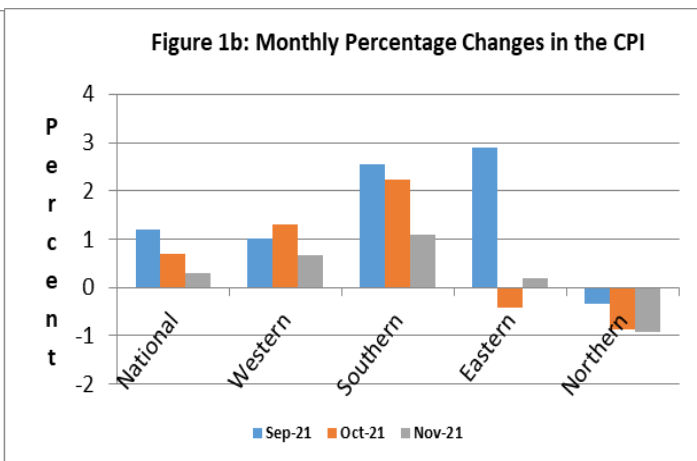
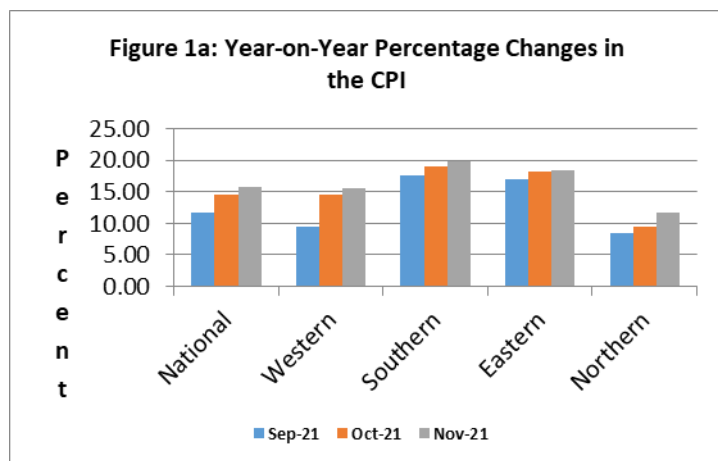
All the four regions show an upward movement: Eastern region from 18.27 percent in October 2021 to 18.38 percent in November 2021, Southern region from 19.04 percent in October to 19.94 percent in November 2021, Western region from 14.55 percent in October 2021 to 15.55 in November 2021 and in the Northern region from 9.43 percent in October 2021 to 11.72 percent in November 2021.

Table 1: National and Regional Year-on-Year and Monthly Inflation rates

2008=100										
Month	National		Western Area		Eastern Region		Southern Region		Northern Region	
	Year-on-Year	Monthly	Year-on-Year	Monthly	Year-on-Year	Monthly	Year-on-Year	Monthly	Year-on-Year	Monthly
Oct, 2021	14.55	0.69	14.55	1.31	18.27	-0.43	19.04	2.22	9.43	-0.88
Nov, 2021	15.77	0.29	15.55	0.66	18.38	0.19	19.94	1.08	11.72	-0.91

It is observed from the table above that the year-on-year inflation rates for the Southern and Eastern regions are above the national estimate for the month of November, 2021; while Northern and Western regions estimate are below.

Figures 1a and 1b below illustrate the last three months' estimates of the year-on-year inflation and monthly inflation respectively at National and Regional levels.



SELECTED INFLATION RATES AND CPI BY MAIN COICOP HEADING

Table 1.1 below shows the National CPI of the months of November 2020 and November, 2021; as well as the 12 months change in the CPI for the main COICOP functions.

Table 1.1: National CPI and rates of inflation by main COICOP functions (2008=100)

COICOP	WEIGHT	Nov-20	Aug-21	Sep-21	Oct-21	Nov-21	Monthly Inflation	3 Months Change Inflation	12 Months Inflation
		Month Previous Year-	Month m-2 for Current Year	Month m-1 for Current Year	Month m for Current Year	Month m for Current Year			
Food and Non-Alcoholic Beverages	41.86	321.94	386.80	384.95	384.71	382.58	-0.55	-1.09	18.84
Alcoholic Beverages, Tobacco and Narcotics	1.71	279.62	361.65	368.78	368.01	365.54	-0.67	1.08	30.73
Clothing and Footwear	7.34	391.07	399.51	398.73	412.32	412.36	0.01	3.22	5.44
Housing, Water, Electricity, Gas and Other Fuels	13.70	218.08	249.52	252.75	252.35	253.22	0.34	1.48	16.11
Furniture, Household Equipment and Household Maintenance	5.86	364.97	414.23	427.85	430.74	438.64	1.83	5.89	20.19
Health	11.36	380.22	380.56	392.03	393.07	394.97	0.48	3.79	3.88
Transport	7.75	268.45	330.59	330.03	329.13	330.92	0.54	0.1	23.27
Communication	2.04	174.71	178.49	178.49	178.50	181.61	1.74	1.75	3.95
Recreation and Culture	1.47	235.21	245.62	256.14	267.95	281.67	5.12	14.68	19.75
Education	2.88	206.57	226.47	270.24	300.05	324.79	8.25	43.41	57.23
Restaurant and Hotels	0.92	334.78	373.87	406.04	409.33	416.14	1.66	11.31	24.30
Miscellaneous Goods & Services	3.11	286.74	287.07	303.19	309.13	312.96	1.24	9.02	9.14
All Items	100	309.82	350.99	355.22	357.66	358.69	0.29	2.19	15.77

FOOD³ AND NON-FOOD⁴ COMPONENTS

Food items inflation increased by 0.67 percentage point from 18.17 percent in October 2021 to 18.84 percent in November 2021. The key upward movers in the food item basket include the following: corned beef by 18 percent, smoked herring by 9 percent, smoked catfish by 13 percent, vegetable oil by 5 percent, banana long by 12 percent; roasted groundnut by 9 percent; lettuce by 13 percent, cassava leaf by 12 percent, cucumber by 17 percent, fresh okra by 14 percent, benniseed by 12 percent, powder glucose by 5 percent, ogrie by 8 percent, cocoa cola by 9 percent, apple juice by 5 percent.

The non-food items inflation increased by 1.69 percentage point from 11.59 in October 2021 to 13.28 percent in November 2021. In the non-food category ten divisions went up and only one went down. Drastic increases were noticed in Education, by 11.98 percentage points; Hotels and Restaurants by 5.69 percentage points; and Recreation and Culture by 8.10 percentage points.

NOTE: The National CPI measures the change in prices, on average, from month to month, of the goods and services bought by households, in Freetown, Bo, Kenema, Kono and Makeni and include all expenditure groups. Prices are collected for 436 items (goods and services). All prices collected are the prevailing retail market prices from six (6) markets in Freetown and, three (3) Markets each in Bo, Kenema, Makeni and Kono for weekly prices and other outlets for monthly items whose prices are less likely to fluctuate rapidly. We are using the Modified Laspeyres formula to compute indices according to the Classification of Individual Consumption by Purpose (COICOP) with 12 functions.

³ Food and Non-Alcoholic Beverages

⁴ All other main COICOP Functions excluding Food and Non-Alcoholic Beverages

Table 1.2: 2021 Food and Non-food inflation rates

Items	Jan	Feb	Mar	April	May	June	July	Aug	Sept	Oct	Nov	Dec
Food and Non-alcoholic Beverages	18.88	19.59	15.45	15.64	17.56	17.12	15.40	14.88	13.28	18.17	18.84	
Non-food	5.87	4.24	3.88	4.67	3.57	4.53	6.40	7.48	10.21	11.59	13.28	

Table 2: Year-on-Year and Monthly Inflation Rates

	National CPI (2008=100)			Western Area/Freetown CPI (2008=100)		
	CPI	Year-on- Year % Change	Monthly Change	CPI	Year-on –Year % Change	Monthly Change
2017						
January	191.59	18.66	2.24	197.56	18.64	2.58
February	194.63	19.82	1.59	200.70	19.72	1.59
March	196.15	20.22	0.78	202.36	20.16	0.83
April	197.66	19.80	0.77	204.09	19.81	0.85
May	198.72	18.91	0.54	204.49	18.09	0.20
June	200.85	19.14	1.07	206.40	18.07	0.93
July	202.87	18.56	1.01	207.94	18.33	0.75
August	204.75	18.01	0.93	209.55	17.17	0.77
September	206.35	17.83	0.78	211.50	17.56	0.93
October	207.88	16.86	0.74	212.93	16.30	0.67
November	212.46	16.26	2.20	217.34	16.45	2.07
December	216.11	15.33	1.72	220.98	14.74	1.67
Average	202.50	18.28	1.20	207.99	17.92	1.15
2018						
January	219.73	14.69	1.68	223.74	13.25	1.25
February	222.65	14.40	1.33	226.02	12.62	1.02
March	225.40	14.91	1.24	228.17	12.76	0.95
April	227.58	15.14	0.97	229.58	12.49	0.62
May	230.55	16.02	1.31	232.64	13.77	1.34
June	234.13	16.57	1.55	235.92	14.31	1.41
July	238.79	17.71	1.99	241.88	16.32	2.52
August	242.00	18.19	1.34	246.79	17.77	2.03
September	243.00	17.77	0.43	245.62	16.13	-0.47
October	241.30	16.06	-0.72	242.86	14.06	-1.12
November	247.60	16.55	2.64	250.50	15.25	3.14
December	246.90	14.25	-0.29	247.61	12.05	-1.15
Average	234.97	16.02	1.12	237.61	14.23	0.96

More information can also be obtained from our website: www.statistics.sl

For more detailed Information: Subscribe to the Detailed CPI Report. Please Contact:
The Statistician General, Statistics Sierra Leone, P. O. Box 595, Tower Hill, Freetown, SIERRA LEONE
E-mail: statistics@statistics.sl or info@statistics.sl

Table 2: (Cont'd)

	National CPI (2008=100)			Western Area/Freetown CPI (2008=100)		
	CPI	Year-on- Year % Change	Monthly Change	CPI	Year-on –Year % Change	Monthly Change
2019						
January	251.27	14.35	1.77	249.40	11.47	0.72
February	254.01	14.08	1.09	257.62	13.98	3.30
March	258.69	14.77	1.84	262.29	14.95	1.81
April	265.27	16.56	2.54	267.74	16.62	2.08
May	265.07	14.97	-0.08	266.18	14.41	-0.58
June	268.42	14.65	1.26	269.19	14.10	1.13
July	274.35	14.89	2.21	271.38	12.20	0.81
August	279.34	15.43	1.82	279.90	13.41	3.14
September	279.86	15.16	0.19	276.56	12.59	-1.19
October	279.49	15.85	-0.13	281.63	15.96	1.83
November	280.04	13.09	0.20	289.71	15.66	2.87
December	281.20	13.89	0.41	294.07	18.76	1.50
Average	269.75	14.81	1.09	272.14	14.51	1.45
2020						
January	285.45	13.60	1.51	299.50	20.09	1.84
February	291.33	14.69	2.06	306.04	18.79	2.18
March	298.95	15.56	2.62	310.61	18.42	1.49
April	305.28	15.08	2.12	315.76	17.94	1.66
May	306.07	15.47	0.26	319.41	20.00	1.15
Jun	306.97	14.36	0.29	315.75	17.29	-1.15
Jul	310.84	13.30	1.26	321.21	18.36	1.73
Aug	316.56	13.32	1.84	325.23	16.20	1.25
Sept	318.22	13.71	0.52	328.56	18.81	1.02
Oct	312.22	11.71	-1.89	318.35	13.04	-3.11
Nov	309.82	10.63	-0.77	317.68	9.65	-0.21
Dec	310.58	10.45	0.25	320.01	8.82	0.73
Average	306.02	13.49	0.84	316.51	16.45	0.72
2021						
January	318.27	11.50	2.48	327.32	9.29	2.28
February	323.01	10.87	1.49	329.15	7.55	0.56
March	325.72	8.95	0.84	335.15	7.90	1.82
April	334.60	9.60	2.73	341.38	8.11	1.86
May	336.08	9.80	0.44	344.07	7.72	0.79
Jun	338.28	10.20	0.65	347.85	10.17	1.10
Jul	343.47	10.50	1.53	349.26	8.73	0.40
Aug	350.99	10.88	2.19	356.38	9.58	2.04
Sept	355.22	11.63	1.21	359.94	9.55	1.00
Oct	357.66	14.55	0.69	364.67	14.55	1.31
Nov	358.69	15.77	0.29	367.09	15.55	0.66

Table 3: National Consumer Price Index by Main COICOP Groups (2008=100)

	Food and Non-Alcoholic Beverages	Alcoholic Beverages, Tobacco and Narcotics	Clothing and Footwear	Housing, Water, Electricity, Gas and Other Fuels	Furniture, Household Equipment and Household Maintenance	Health	Transport	Communication	Recreation and Culture	Education	Restaurant and Hotels	Miscellaneous Goods and Services	All Items
Weight	41.86	1.71	7.34	13.7	5.86	11.36	7.75	2.04	1.47	2.88	0.92	3.13	100
Jan-17	204.76	181.11	216.4	165.98	215.6	183.42	173.05	148.89	180.22	136.84	182.64	187.32	191.59
Feb-17	208.42	186.2	221.43	167.42	221.35	185.87	173.85	150.43	180.65	136.91	182.74	190.46	194.63
Mar-17	210.81	190.78	221.69	167.97	222.42	186.13	176.25	150.52	181.21	137.08	184.93	191.65	196.15
Apr-17	211.73	192.07	224.05	168.43	226.5	188.8	180.03	153.23	181.88	137.21	186.93	193.3	197.66
May-17	212.33	193.55	227.95	168.96	226.53	189.34	183.8	154.16	182.71	137.22	189.74	195.38	198.72
Jun-17	214.56	195.64	233.71	169.47	230.04	191.33	184.16	156.1	185.35	137.51	190.92	197.51	200.85
Jul-17	217.85	197.43	234.78	169.8	231.65	193	184.7	156.96	185.8	137.65	192.15	199.62	202.87
Aug-17	220.49	202.41	235.42	170.01	234.36	194.21	185.1	157.52	186.46	138.55	195.97	203.91	204.75
Sept-17	221.96	204.02	237.81	170.27	237.6	196.62	186.54	160.62	187.72	138.85	199.6	205.61	206.35
Oct-17	223.88	206.03	239.05	170.71	240.1	197.87	187.36	161.93	190.35	139.17	203.05	207.79	207.88
Nov-17	231.59	209.96	242.24	172.65	242.46	199.36	187.63	163.72	193.65	141.25	205.38	212.08	212.46
Dec-17	236.14	215.57	248.21	174.79	246.89	201.37	188.95	164.78	196.29	143.49	211.1	214.87	216.11
Jan-18	240.61	218.27	251.93	176.68	249.13	205.92	190.98	165.94	198.83	147.19	214.47	217.67	219.73
Feb-18	243.6	222.52	254.76	178.69	254.02	209.47	191.54	170.77	201.11	148.5	220.16	220.6	222.65
Mar-18	246.07	226.68	257.38	180.06	260.28	213.6	192.93	171.25	205.24	150.83	225.93	224.25	225.4
Apr-18	248.17	229.31	258.64	181.16	262.12	217.72	193.83	172.23	207.54	152.61	230.49	228.49	227.58
May-18	252.09	232.24	262.07	183.59	263.81	219.84	195.17	172.8	209.48	153.13	234.05	231.32	230.55
Jun-18	256.72	236.77	265.64	185.6	268.26	223.15	196.28	173.87	211.05	154.68	238.77	234.5	234.13
Jul-18	259.39	240.41	267.99	197.69	274.18	226.57	211.78	175.02	212.51	155.74	244.95	235.47	238.79
Aug-18	264.13	243.64	274.6	202.29	289.45	224.45	215.98	144.21	212.73	157.46	254.01	231.41	241.99
Sep-18	266.47	249.53	275.38	203.96	283.93	226.97	219.94	146.47	219.42	119.82	251.8	240.5	243.02
Oct-18	262.55	241.85	278.15	201.81	285.75	228.72	220.56	147.15	217.34	119.82	270.9	232.25	241.26
Nov-18	270.26	256.4	286.95	207.29	290.83	232.6	223.78	148.09	222.5	120.55	258.64	243.09	247.62
Dec-18	266.29	250.55	283.81	208.13	284.5	246.04	229.18	144.51	215.92	120.55	289.65	227.76	246.9
Jan-19	266.00	260.05	311.87	209.80	294.04	253.14	227.03	145.37	224.03	120.97	279.86	244.01	251.27
Feb-19	269.18	264.64	309.94	209.37	309.97	253.94	225.81	160.61	240.73	121.66	280.52	248.62	254.01
Mar-19	276.29	267.26	316.58	212.03	314.69	257.44	226.29	159.17	231.29	122.27	286.81	250.51	258.69
Apr-19	287.67	280.13	321.05	216.88	322.77	252.71	230.26	159.29	236.17	123.45	284.89	259.34	265.27
May-19	271.03	274.68	331.20	211.64	348.38	291.15	235.67	176.63	227.26	134.65	279.30	267.67	265.07
Jun-19	273.74	275.25	338.34	211.26	359.29	303.77	237.49	178.37	222.02	122.47	281.26	265.58	268.42
Jul-19	279.31	281.22	345.66	217.16	362.95	311.80	250.00	165.16	224.49	122.47	294.50	274.17	274.35
Aug-19	286.00	286.45	334.19	217.52	351.19	345.08	244.26	171.13	219.31	122.47	292.64	258.01	279.34
Sept-19	288.59	281.58	334.92	218.53	356.37	331.87	250.41	155.92	218.37	122.47	328.86	267.89	279.86
Oct-19	286.36	280.77	333.75	221.95	358.16	333.1	250.5	155.92	217.99	122.47	327.57	268.52	279.49
Nov-19	280.04	269.2	333.1	226.15	344.01	343.26	249.99	155.92	223.13	206.57	318.96	263.91	280.04
Dec-19	280.62	279.46	328.60	229.75	347.76	344.33	255.46	155.90	222.51	206.57	318.99	263.45	281.20

Table 3: (Cont'd)

	Food and Non-Alcoholic Beverages	Alcoholic Beverages, Tobacco and Narcotics	Clothing and Footwear	Housing, Water, Electricity, Gas and Other Fuels	Furniture, Household Equipment and Household Maintenance	Health	Transport	Communication	Recreation and Culture	Education	Restaurant and Hotels	Miscellaneous Goods and Services	All Items
Jan-20	285.84	288.03	337.24	231.49	347.52	342.89	267.38	155.87	223.65	206.57	339.5	270.3	285.45
Feb-20	291.53	275.23	341.22	233.51	335.71	371.28	268.79	163.83	224.43	206.57	336.83	266.44	291.33
Mar-20	303.57	279.46	349.3	229.35	340.8	382.19	265.91	172.83	231.42	206.57	344.58	277.43	298.95
Apr-20	317.98	284.66	354.54	221.18	347.49	384.89	262.71	172.84	233.56	206.57	349.09	280.92	305.28
May-20	316.02	286.87	358.67	223.69	349.37	389.01	263.61	174.33	233.85	206.57	357.22	284.91	306.07
Jun-20	320.11	291.3	364.95	223.57	355.04	369.92	273.12	176.07	235.21	206.57	361.83	289.13	306.97
Jul-20	327.56	291.48	370.96	223.59	358.21	371.11	276.48	174.35	238.89	206.57	362.60	282.20	310.84
Aug-20	336.69	291.16	377.52	223.35	361.94	378.06	275.26	178.66	239.92	206.57	359.63	288.8	316.56
Sept-20	339.82	287.7	379.9	226.13	365.98	377.54	273.04	175.55	240.98	206.57	346.71	289.35	318.22
Oct-20	325.55	283.86	394.65	221.04	366.29	376.82	269.11	174.19	240.00	206.57	345.1	292.41	312.22
Nov-20	321.94	279.62	391.07	218.08	364.97	380.22	268.45	174.71	235.21	206.57	334.78	286.74	309.82
Dec-20	322.98	296.29	391.52	220.66	370.75	369.95	272.42	180.61	233.02	225.26	334.55	280.34	310.58
Jan-21	339.82	295.96	389.12	222.35	368.9	373.19	270.93	181.26	233.59	225.26	334.71	282.66	318.27
Feb-21	348.63	297.98	385.42	233.09	379.88	360.91	281.87	181.7	234.8	225.26	342.3	286.93	323.01
Mar-21	350.46	307.34	379.79	236.04	380.5	375.08	282.42	178.44	234.79	225.26	340.47	286.5	325.72
Apr-21	367.72	323.95	391.95	237.53	384.85	372.23	283.75	178.44	235.8	225.26	347.52	284.58	334.60
May-21	371.51	321.94	381.95	238.11	386.2	374.83	281.71	178.44	237.05	225.26	366.66	286.37	336.08
Jun-21	374.91	326.78	386.54	242.28	394.52	370.73	283.15	178.43	238.84	226.47	367.94	279.34	338.28
Jul-21	378.02	348.37	392.67	243.15	414.87	374.34	306.49	178.46	242.27	226.47	372.44	285.39	343.47
Aug-21	386.8	361.65	399.51	249.52	414.23	380.56	330.59	178.49	245.62	226.47	373.87	287.07	350.99
Sept-21	384.95	368.78	398.73	252.75	427.85	392.03	330.03	178.49	256.14	270.24	406.04	303.19	355.22
Oct-21	384.71	368.01	412.32	252.35	430.74	393.07	329.13	178.5	267.95	300.05	409.33	309.13	357.66
Nov-21	382.58	365.54	412.36	253.22	438.64	394.97	330.92	181.61	281.67	324.79	416.14	312.96	358.69