



STATISTICS SIERRA LEONE
(Stats SL)

Credible Data for National Development

CONSUMER PRICE INDEX MAY 2021

PRESS RELEASE

Released: 21st June, 2021 @ 12: 00 noon

Contact Persons:

Mwaluma Andrew Bryma GEGBE, MA, MSc

Director of National Accounts and Economic Statistics Division
Statistics Sierra Leone

Mobile: +23279442430/ +23288000898

Email: mwaluma.gegbe@statistics.sl

Skype: mwaluma.gegbe

Isata M. ALLIEU-KEIKURA, MSc

Principal Statistician and Head, Price & Labour Statistics Section
National Accounts and Economic Statistics Division
Statistics Sierra Leone

Mobile: +23276580842

Email: isata.allieu-keikura@statistics.sl

Reviewed by

Andrew Bob JOHNNY, MSc

Deputy Statistician General
Statistics Sierra Leone

Email: andrew.johnny@statistics.sl

Approved for release by:

Prof. Osman SANKOH, DSc

Statistician General & CEO
Statistics Sierra Leone

Email: osman.sankoh@statistics.sl

21st June, 2021

CONTENTS

CONTENTS	1
KEY FINDINGS.....	2
HEADLINE NATIONAL INFLATION RATES.....	2
ANNUAL (YEAR-ON-YEAR) CONSUMER PRICE INFLATION: DETAILED BY MAIN COICOP HEADINGS	2
MONTHLY CONSUMER PRICE INFLATION: DETAILED BY MAIN COICOP HEADINGS	3
MAY 2021 CONSUMER PRICE INDEX (CPI): DETAILED BY REGIONS.....	4
SELECTED INFLATION RATE AND CPI BY MAIN COICOP HEADING.....	5
FOOD AND NON-FOOD COMPONENTS	5

LIST OF TABLES

Table 1: National & Regional Year-on-Year and Monthly Inflation rates.....	4
Table 1.1: National CPI and rates of inflation by main COICOP functions (2008=100)	5
Table 1.2: 2021 Food and Non-food inflation rates	6
Table 2: Year-on-Year and Monthly Inflation Rates	6
Table 3: National Consumer Price Index by Main COICOP Groups (2008=100).....	8

LIST OF FIGURES

Figure 1a: Year-on-Year Percentage Changes in the CPI.....	1
Figure 1b: Monthly Percentage Changes in the CPI.....	1

KEY FINDINGS

HEADLINE NATIONAL INFLATION RATES

Annual National Consumer Price Inflation (year-on-year) for May 2021 stood at 9.80 percent, up by 0.20 percentage point from 9.60 percent in April 2021.

The monthly consumer price inflation for May 2021 is 0.44 percent; down by 2.29 percentage points from 2.73 percent in April, 2021.

ANNUAL (YEAR-ON-YEAR) CONSUMER PRICE INFLATION: DETAILED BY MAIN COICOP¹ HEADINGS

- ✓ Food and non-alcoholic beverages increased from 15.64 percent in April 2021 to 17.56 percent in May 2021. The inflation rate increased by 1.92 percentage points year-on-year.
- ✓ Alcoholic beverages, tobacco and narcotics declined by 1.57 percentage point from 13.80 percent in April 2021 to 12.23 percent in May 2021.
- ✓ Clothing and footwear declined by 4.06 percentage points from 10.55 percent in April 2021 to 6.49 percent in May 2021.
- ✓ Housing, water, electricity, gas and other fuels declined by 0.94 percentage point from 7.39 percent in April 2021 to 6.45 percent in May 2021.
- ✓ Furniture, household equipment and household maintenance declined by 0.21 percentage point from 10.75 percent in April 2021 to 10.54 percent in May 2021.
- ✓ Health declined from -3.29 percent in April 2021 to -3.65 percent in May 2021. The inflation rate decreased by 0.36 percentage point year-on-year.
- ✓ Transport declined by 1.14 percentage point from 8.01 percent in April 2021 to 6.87 percent in May 2021.
- ✓ Communication declined by 0.88 percentage point from 3.24 percent in April 2021 to 2.36 percent in May 2021.
- ✓ Recreation and culture increased from 0.96 percent in April 2021 to 1.37 percent in May 2021. The inflation rate increased by 0.41 percentage point year-on-year.
- ✓ For Education services, no change was noticed between April, 2021 and May, 2021.
- ✓ Restaurant and hotels increased from -0.45 percent in April 2021 to 2.64 percent in May 2021. The inflation rate increased by 3.09 percentage points year-on-year.
- ✓ Miscellaneous goods and services declined by 0.79 percentage point from 1.30 percent in April 2021 to 0.51 percent in May 2021.

¹ Classification of Individual Consumption by Purpose

MONTHLY CONSUMER PRICE INFLATION: DETAILED BY MAIN COICOP² HEADINGS

- ✓ Food and non-alcoholic beverages declined by 3.89 percentage points from 4.92 percent in April 2021 to 1.03 percent in May 2021.
- ✓ Alcoholic beverages, tobacco and narcotics declined by 6.02 percentage points from 5.40 percent in April 2021 to -0.62 percent in May 2021.
- ✓ Clothing and footwear declined by 5.75 percentage points from 3.20 percent in April 2021 to -2.55 percent in May 2021.
- ✓ Housing, water, electricity, gas and other fuels declined by 0.39 percentage point from 0.63 percent in April 2021 to 0.24 percent in May 2021.
- ✓ Furniture, household equipment and household maintenance declined by 0.79 percentage point from 1.14 percent in April 2021 to 0.35 percent in May 2021.
- ✓ Health increased from -0.76 percent in April 2021 to 0.70 percent in May 2021. The inflation rate increased by 1.46 percentage point year-on-year.
- ✓ Transport declined by 1.19 percentage point from 0.47 percent in April 2021 to -0.72 percent in May 2021.
- ✓ Communication services, no change was noticed between April, 2021 and May, 2021.
- ✓ Recreation and culture increased from 0.43 percent in April 2021 to 0.53 percent in May 2021. The inflation rate increased by 0.10 percentage point year-on-year.
- ✓ For Education services, no change was noticed between April, 2021 and May, 2021.
- ✓ Restaurants and hotels services increased from 2.07 percent in April 2021 to 5.51 percent in May 2021. The inflation rate increased by 3.44 percentage points year-on-year.
- ✓ Miscellaneous goods and services increased from -0.67 percent in April 2021 to 0.63 percent in May 2021. The inflation rate increased by 1.30 percentage points year-on-year.

² Classification of Individual Consumption by Purpose

MAY 2021 CONSUMER PRICE INDEX (CPI): DETAILED BY REGIONS

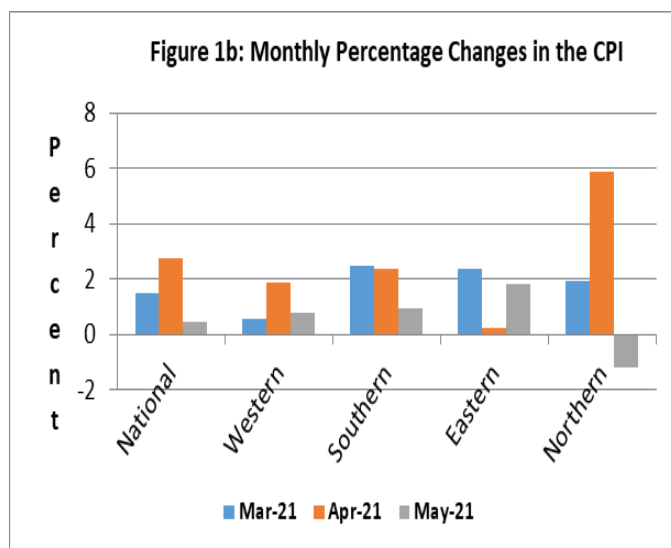
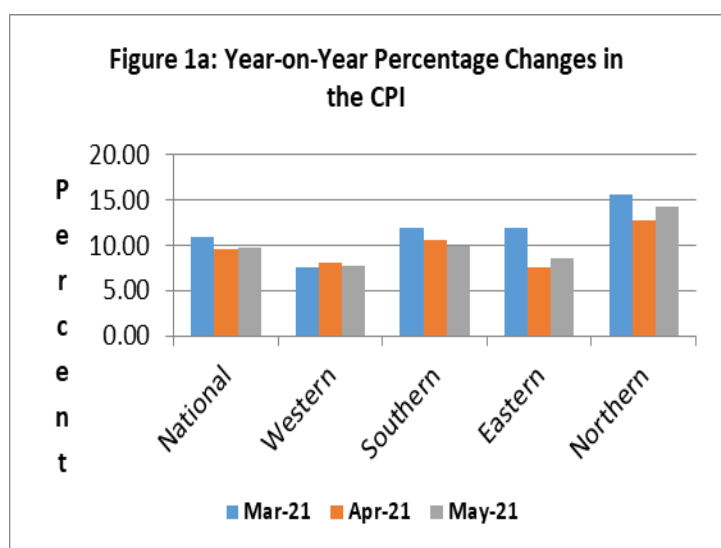
The National Monthly CPI (2008=100) increased from 334.60 in April 2021 to 336.08 in May 2021, resulting to 0.44 percent inflation this month. The national year-on-year inflation for May 2021 stood at 9.80 percent, indicating an upwards trend compared to 9.60 percent in April 2021. Two regions show an upward movement: Northern region from 12.79 percent in April 2021 to 14.33 percent in May 2021 and Eastern region from 7.51 percent in April 2021 to 8.53 in May 2021. The other two regions moved down: Southern region 10.49 percent in April 2021 to 9.87 percent in May 2021 and Western region from 8.11 percent in April 2021 to 7.72 percent in May 2021.

Table 1: National & Regional Year-on-Year and Monthly Inflation rates

2008=100										
Month	National		Western Area		Eastern Region		Southern Region		Northern Region	
	Year-on-Year	Monthly	Year-on-Year	Monthly	Year-on-Year	Monthly	Year-on-Year	Monthly	Year-on-Year	Monthly
Apr, 2021	9.60	2.73	8.11	1.86	7.51	0.23	10.49	2.37	12.79	5.89
May, 2021	9.80	0.44	7.72	0.79	8.53	1.82	9.87	0.96	14.33	-1.21

It is observed from the table above that the year-on-year inflation rates for the Northern and Southern regions are above the national estimate for the month of May, 2021; while Eastern and Western regions estimates are below.

Figures 1a & 1b below illustrate the last three months' estimates of the year-on-year inflation and monthly inflation respectively at National and Regional levels.



SELECTED INFLATION RATES AND CPI BY MAIN COICOP HEADING

Table 1.1 below shows the National CPI of the months of May, 2020 and May, 2021; as well as the 12 months change in the CPI for the main COICOP functions.

Table 1.1: National CPI and rates of inflation by main COICOP functions (2008=100)

COICOP	WEIGHT	May-20	Feb-21	Mar-21	Apr-21	May-21	Monthly Inflation	3 Months Change Inflation	12 Months Inflation
		Month Previous Year-	Month m-2 for Current Year	Month m-1 for Current Year	Month m for Current Year	Month m for Current Year			
Food and Non-Alcoholic Beverages	41.86	316.02	348.63	350.46	367.72	371.51	1.03	6.56	17.56
Alcoholic Beverages, Tobacco and Narcotics	1.71	286.87	297.98	307.34	323.95	321.94	-0.62	8.04	12.23
Clothing and Footwear	7.34	358.67	385.42	379.79	391.95	381.95	-2.55	-0.9	6.49
Housing, Water, Electricity, Gas and Other Fuels	13.70	223.69	233.09	236.04	237.53	238.11	0.24	2.15	6.45
Furniture, Household Equipment and Household Maintenance	5.86	349.37	379.88	380.50	384.85	386.20	0.35	1.66	10.54
Health	11.36	389.01	360.91	375.08	372.23	374.83	0.70	3.86	-3.65
Transport	7.75	263.61	281.87	282.42	283.75	281.71	-0.72	-0.06	6.87
Communication	2.04	174.33	181.70	178.44	178.44	178.44	0.00	-1.79	2.36
Recreation and Culture	1.47	233.84	234.80	234.79	235.80	237.05	0.53	0.96	1.37
Education	2.88	206.57	225.26	225.26	225.26	225.26	0.00	0	9.05
Restaurant and Hotels	0.92	357.22	342.30	340.47	347.52	366.66	5.51	7.12	2.64
Miscellaneous Goods & Services	3.13	284.91	286.93	286.50	284.58	286.37	0.63	-0.2	0.51
All Items	100	306.07	323.01	325.72	334.60	336.08	0.44	4.05	9.80

The National CPI measures the change in prices, on average, from month to month, of the goods and services bought by households, in Freetown, Bo, Kenema, Kono and Makeni and include all expenditure groups. Prices are collected for at least 436 items. All prices collected are the prevailing retail market prices from six (6) markets in Freetown and, three (3) Markets each in Bo, Kenema, Makeni and Kono for weekly prices and other outlets for monthly items whose prices are less likely to fluctuate rapidly. We are using the Modified Laspeyres formula to compute indices according to the Classification of Individual Consumption by Purpose (COICOP) with 12 functions.

FOOD³ AND NON-FOOD⁴ COMPONENTS

Food items inflation increased by 1.92 percentage points from 15.64 percent in April 2021 to 17.56 percent in May 2021. The following are the key upward movers in the food item basket: Imported long-grained rice by 12 percent, smoked bonga by 15 percent, shine nose 12 percent, beef with bone and without by 19 percent each, oxtail by 23 percent, yam by 15 percent, equsie by 17 percent, garri by 11 percent, garlic by 12 percent, orange by 7 percent, Lemon by 13 percent; green, yellow and red pepper by 24 percent, fanta/sprite by 15 percent, etc. However, inflation rate of some food items declined: eggs by 2 percent, pineapple by 3 percent, palm kernel oil by 14 percent,

³ Food and Non-Alcoholic Beverages

⁴ All other main COICOP Functions excluding Food and Non-Alcoholic Beverages

cassava leaf by 20 percent, potato leaf by 20 percent, round onion by 9 percent, eggplant by 19 percent, cucumber by 11 percent, fresh okra by 15 percent and sweet potato by 11 percent.

The non-food items inflation decreased by 1.10 percentage point from 4.67 in April 2021 to 3.57 percent in May 2021. All divisions, except two, in non-food category declined. Of the two upward movers, a huge leap by 3.09 percentage points was noticed in the restaurant and hotel division which in most recent times has been declining.

Table 1.2: 2021 Food and Non-food inflation rates

Items	Jan	Feb	Mar	April	May	June	July	Aug	Sept	Oct	Nov	Dec
Food and Non-alcoholic Beverages	18.88	19.59	15.45	15.64	17.56							
Non-food	5.87	4.24	3.88	4.67	3.57							

Table 2: Year-on-Year and Monthly Inflation Rates

	National CPI (2008=100)			Western Area/Freetown CPI (2008=100)		
	CPI	Year-on- Year % Change	Monthly Change	CPI	Year-on –Year % Change	Monthly Change
2017						
January	191.59	18.66	2.24	197.56	18.64	2.58
February	194.63	19.82	1.59	200.70	19.72	1.59
March	196.15	20.22	0.78	202.36	20.16	0.83
April	197.66	19.80	0.77	204.09	19.81	0.85
May	198.72	18.91	0.54	204.49	18.09	0.20
June	200.85	19.14	1.07	206.40	18.07	0.93
July	202.87	18.56	1.01	207.94	18.33	0.75
August	204.75	18.01	0.93	209.55	17.17	0.77
September	206.35	17.83	0.78	211.50	17.56	0.93
October	207.88	16.86	0.74	212.93	16.30	0.67
November	212.46	16.26	2.20	217.34	16.45	2.07
December	216.11	15.33	1.72	220.98	14.74	1.67
Average	202.50	18.28	1.20	207.99	17.92	1.15
2018						
January	219.73	14.69	1.68	223.74	13.25	1.25
February	222.65	14.40	1.33	226.02	12.62	1.02
March	225.40	14.91	1.24	228.17	12.76	0.95
April	227.58	15.14	0.97	229.58	12.49	0.62
May	230.55	16.02	1.31	232.64	13.77	1.34
June	234.13	16.57	1.55	235.92	14.31	1.41
July	238.79	17.71	1.99	241.88	16.32	2.52
August	242.00	18.19	1.34	246.79	17.77	2.03
September	243.00	17.77	0.43	245.62	16.13	-0.47
October	241.30	16.06	-0.72	242.86	14.06	-1.12
November	247.60	16.55	2.64	250.50	15.25	3.14
December	246.90	14.25	-0.29	247.61	12.05	-1.15
Average	234.97	16.02	1.12	237.61	14.23	0.96

More information can also be obtained from our website: www.statistics.sl

For more detailed Information: Subscribe to the Detailed CPI Report. Please Contact:
The Statistician General, Statistics Sierra Leone, P. O. Box 595, Tower Hill, Freetown, SIERRA LEONE
E-mail: statistics@statistics.sl or info@statistics.sl

Table 2: (Cont'd)

	National CPI (2008=100)			Western Area/Freetown CPI (2008=100)		
	CPI	Year-on- Year % Change	Monthly Change	CPI	Year-on –Year % Change	Monthly Change
2019						
January	251.27	14.35	1.77	249.40	11.47	0.72
February	254.01	14.08	1.09	257.62	13.98	3.30
March	258.69	14.77	1.84	262.29	14.95	1.81
April	265.27	16.56	2.54	267.74	16.62	2.08
May	265.07	14.97	-0.08	266.18	14.41	-0.58
June	268.42	14.65	1.26	269.19	14.10	1.13
July	274.35	14.89	2.21	271.38	12.20	0.81
August	279.34	15.43	1.82	279.90	13.41	3.14
September	279.86	15.16	0.19	276.56	12.59	-1.19
October	279.49	15.85	-0.13	281.63	15.96	1.83
November	280.04	13.09	0.20	289.71	15.66	2.87
December	281.20	13.89	0.41	294.07	18.76	1.50
Average	269.75	14.81	1.09	272.14	14.51	1.45
2020						
January	285.45	13.60	1.51	299.50	20.09	1.84
February	291.33	14.69	2.06	306.04	18.79	2.18
March	298.95	15.56	2.62	310.61	18.42	1.49
April	305.28	15.08	2.12	315.76	17.94	1.66
May	306.07	15.47	0.26	319.41	20.00	1.15
Jun	306.97	14.36	0.29	315.75	17.29	-1.15
Jul	310.84	13.30	1.26	321.21	18.36	1.73
Aug	316.56	13.32	1.84	325.23	16.20	1.25
Sept	318.22	13.71	0.52	328.56	18.81	1.02
Oct	312.22	11.71	-1.89	318.35	13.04	-3.11
Nov	309.82	10.63	-0.77	317.68	9.65	-0.21
Dec	310.58	10.45	0.25	320.01	8.82	0.73
Average	306.02	13.49	0.84	316.51	16.45	0.72
2021						
January	318.27	11.50	2.48	327.32	9.29	2.28
February	323.01	10.87	1.49	329.15	7.55	0.56
March	325.72	8.95	0.84	335.15	7.90	1.82
April	334.60	9.60	2.73	341.38	8.11	1.86
May	336.08	9.80	0.44	344.07	7.72	0.79

Table 3: National Consumer Price Index by Main COICOP Groups (2008=100)

	Food and Non-Alcoholic Beverages	Alcoholic Beverages, Tobacco and Narcotics	Clothing and Footwear	Housing, Water, Electricity, Gas and Other Fuels	Furniture, Household Equipment and Household Maintenance	Health	Transport	Communication	Recreation and Culture	Education	Restaurant and Hotels	Miscellaneous Goods and Services	All Items
Weight	41.86	1.71	7.34	13.7	5.86	11.36	7.75	2.04	1.47	2.88	0.92	3.13	100
Jan-17	204.76	181.11	216.4	165.98	215.6	183.42	173.05	148.89	180.22	136.84	182.64	187.32	191.59
Feb-17	208.42	186.2	221.43	167.42	221.35	185.87	173.85	150.43	180.65	136.91	182.74	190.46	194.63
Mar-17	210.81	190.78	221.69	167.97	222.42	186.13	176.25	150.52	181.21	137.08	184.93	191.65	196.15
Apr-17	211.73	192.07	224.05	168.43	226.5	188.8	180.03	153.23	181.88	137.21	186.93	193.3	197.66
May-17	212.33	193.55	227.95	168.96	226.53	189.34	183.8	154.16	182.71	137.22	189.74	195.38	198.72
Jun-17	214.56	195.64	233.71	169.47	230.04	191.33	184.16	156.1	185.35	137.51	190.92	197.51	200.85
Jul-17	217.85	197.43	234.78	169.8	231.65	193	184.7	156.96	185.8	137.65	192.15	199.62	202.87
Aug-17	220.49	202.41	235.42	170.01	234.36	194.21	185.1	157.52	186.46	138.55	195.97	203.91	204.75
Sept-17	221.96	204.02	237.81	170.27	237.6	196.62	186.54	160.62	187.72	138.85	199.6	205.61	206.35
Oct-17	223.88	206.03	239.05	170.71	240.1	197.87	187.36	161.93	190.35	139.17	203.05	207.79	207.88
Nov-17	231.59	209.96	242.24	172.65	242.46	199.36	187.63	163.72	193.65	141.25	205.38	212.08	212.46
Dec-17	236.14	215.57	248.21	174.79	246.89	201.37	188.95	164.78	196.29	143.49	211.1	214.87	216.11
Jan-18	240.61	218.27	251.93	176.68	249.13	205.92	190.98	165.94	198.83	147.19	214.47	217.67	219.73
Feb-18	243.6	222.52	254.76	178.69	254.02	209.47	191.54	170.77	201.11	148.5	220.16	220.6	222.65
Mar-18	246.07	226.68	257.38	180.06	260.28	213.6	192.93	171.25	205.24	150.83	225.93	224.25	225.4
Apr-18	248.17	229.31	258.64	181.16	262.12	217.72	193.83	172.23	207.54	152.61	230.49	228.49	227.58
May-18	252.09	232.24	262.07	183.59	263.81	219.84	195.17	172.8	209.48	153.13	234.05	231.32	230.55
Jun-18	256.72	236.77	265.64	185.6	268.26	223.15	196.28	173.87	211.05	154.68	238.77	234.5	234.13
Jul-18	259.39	240.41	267.99	197.69	274.18	226.57	211.78	175.02	212.51	155.74	244.95	235.47	238.79
Aug-18	264.13	243.64	274.6	202.29	289.45	224.45	215.98	144.21	212.73	157.46	254.01	231.41	241.99
Sep-18	266.47	249.53	275.38	203.96	283.93	226.97	219.94	146.47	219.42	119.82	251.8	240.5	243.02
Oct-18	262.55	241.85	278.15	201.81	285.75	228.72	220.56	147.15	217.34	119.82	270.9	232.25	241.26
Nov-18	270.26	256.4	286.95	207.29	290.83	232.6	223.78	148.09	222.5	120.55	258.64	243.09	247.62
Dec-18	266.29	250.55	283.81	208.13	284.5	246.04	229.18	144.51	215.92	120.55	289.65	227.76	246.9
Jan-19	266.00	260.05	311.87	209.80	294.04	253.14	227.03	145.37	224.03	120.97	279.86	244.01	251.27
Feb-19	269.18	264.64	309.94	209.37	309.97	253.94	225.81	160.61	240.73	121.66	280.52	248.62	254.01
Mar-19	276.29	267.26	316.58	212.03	314.69	257.44	226.29	159.17	231.29	122.27	286.81	250.51	258.69
Apr-19	287.67	280.13	321.05	216.88	322.77	252.71	230.26	159.29	236.17	123.45	284.89	259.34	265.27
May-19	271.03	274.68	331.20	211.64	348.38	291.15	235.67	176.63	227.26	134.65	279.30	267.67	265.07
Jun -19	273.74	275.25	338.34	211.26	359.29	303.77	237.49	178.37	222.02	122.47	281.26	265.58	268.42
Jul-19	279.31	281.22	345.66	217.16	362.95	311.80	250.00	165.16	224.49	122.47	294.50	274.17	274.35
Aug-19	286.00	286.45	334.19	217.52	351.19	345.08	244.26	171.13	219.31	122.47	292.64	258.01	279.34
Sept- 19	288.59	281.58	334.92	218.53	356.37	331.87	250.41	155.92	218.37	122.47	328.86	267.89	279.86
Oct- 19	286.36	280.77	333.75	221.95	358.16	333.1	250.5	155.92	217.99	122.47	327.57	268.52	279.49
Nov- 19	280.04	269.2	333.1	226.15	344.01	343.26	249.99	155.92	223.13	206.57	318.96	263.91	280.04
Dec- 19	280.62	279.46	328.60	229.75	347.76	344.33	255.46	155.90	222.51	206.57	318.99	263.45	281.20

Table 3: (Cont'd)

	Food and Non-Alcoholic Beverages	Alcoholic Beverages, Tobacco and Narcotics	Clothing and Footwear	Housing, Water, Electricity, Gas and Other Fuels	Furniture, Household Equipment and Household Maintenance	Health	Transport	Communication	Recreation and Culture	Education	Restaurant and Hotels	Miscellaneous Goods and Services	All Items
Jan-20	285.84	288.03	337.24	231.49	347.52	342.89	267.38	155.87	223.65	206.57	339.5	270.3	285.45
Feb-20	291.53	275.23	341.22	233.51	335.71	371.28	268.79	163.83	224.43	206.57	336.83	266.44	291.33
Mar-20	303.57	279.46	349.3	229.35	340.8	382.19	265.91	172.83	231.42	206.57	344.58	277.43	298.95
Apr-20	317.98	284.66	354.54	221.18	347.49	384.89	262.71	172.84	233.56	206.57	349.09	280.92	305.28
May-20	316.02	286.87	358.67	223.69	349.37	389.01	263.61	174.33	233.85	206.57	357.22	284.91	306.07
Jun-20	320.11	291.3	364.95	223.57	355.04	369.92	273.12	176.07	235.21	206.57	361.83	289.13	306.97
Jul-20	327.56	291.48	370.96	223.59	358.21	371.11	276.48	174.35	238.89	206.57	362.60	282.20	310.84
Aug-20	336.69	291.16	377.52	223.35	361.94	378.06	275.26	178.66	239.92	206.57	359.63	288.8	316.56
Sept-20	339.82	287.7	379.9	226.13	365.98	377.54	273.04	175.55	240.98	206.57	346.71	289.35	318.22
Oct-20	325.55	283.86	394.65	221.04	366.29	376.82	269.11	174.19	240.00	206.57	345.1	292.41	312.22
Nov-20	321.94	279.62	391.07	218.08	364.97	380.22	268.45	174.71	235.21	206.57	334.78	286.74	309.82
Dec-20	322.98	296.29	391.52	220.66	370.75	369.95	272.42	180.61	233.02	225.26	334.55	280.34	310.58
Jan-21	339.82	295.96	389.12	222.35	368.9	373.19	270.93	181.26	233.59	225.26	334.71	282.66	318.27
Feb-21	348.63	297.98	385.42	233.09	379.88	360.91	281.87	181.7	234.8	225.26	342.3	286.93	323.01
Mar-21	350.46	307.34	379.79	236.04	380.5	375.08	282.42	178.44	234.79	225.26	340.47	286.5	325.72
Apr-21	367.72	323.95	391.95	237.53	384.85	372.23	283.75	178.44	235.8	225.26	347.52	284.58	334.60
May-21	371.51	321.94	381.95	238.11	386.2	374.83	281.71	178.44	237.05	225.26	366.66	286.37	336.08