



STATISTICS SIERRA LEONE
(Stats SL)

Credible Data for National Development

CONSUMER PRICE INDEX JULY 2021

PRESS RELEASE

Released: 10th August, 2021 @ 12: 00 noon

Contact Persons:

Mwaluma Andrew Bryma GEGBE, MA, MSc

Director of National Accounts and Economic Statistics Division
Statistics Sierra Leone

Mobile: +23279442430/ +23288000898

Email: mwaluma.gegbe@statistics.sl

Skype: mwaluma.gegbe

Isata M. ALLIEU-KEIKURA, MSc

Principal Statistician and Head, Price & Labour Statistics Section
National Accounts and Economic Statistics Division
Statistics Sierra Leone

Mobile: +23276580842

Email: isata.allieu-keikura@statistics.sl

Reviewed by

Andrew Bob JOHNNY, MSc

Deputy Statistician General
Statistics Sierra Leone

Email: andrew.johnny@statistics.sl

Approved for release by:

Prof. Osman SANKOH, DSc

Statistician General & CEO
Statistics Sierra Leone

Email: osman.sankoh@statistics.sl

10th August, 2021

CONTENTS

| | |
|--|---|
| CONTENTS | 1 |
| KEY FINDINGS..... | 2 |
| HEADLINE NATIONAL INFLATION RATES..... | 2 |
| ANNUAL (YEAR-ON-YEAR) CONSUMER PRICE INFLATION: DETAILED BY MAIN COICOP HEADINGS | 2 |
| MONTHLY CONSUMER PRICE INFLATION: DETAILED BY MAIN COICOP HEADINGS | 3 |
| JULY 2021 CONSUMER PRICE INDEX (CPI): DETAILED BY REGIONS..... | 4 |
| SELECTED INFLATION RATE AND CPI BY MAIN COICOP HEADING..... | 5 |
| FOOD AND NON-FOOD COMPONENTS | 5 |

LIST OF TABLES

| | |
|--|---|
| Table 1: National & Regional Year-on-Year and Monthly Inflation rates..... | 4 |
| Table 1.1: National CPI and rates of inflation by main COICOP functions (2008=100) | 5 |
| Table 1.2: 2021 Food and Non-food inflation rates | 6 |
| Table 2: Year-on-Year and Monthly Inflation Rates | 6 |
| Table 3: National Consumer Price Index by Main COICOP Groups (2008=100)..... | 8 |

LIST OF FIGURES

| | |
|--|---|
| Figure 1a: Year-on-Year Percentage Changes in the CPI..... | 1 |
| Figure 1b: Monthly Percentage Changes in the CPI..... | 1 |

KEY FINDINGS

HEADLINE NATIONAL INFLATION RATES

Annual National Consumer Price Inflation (year-on-year) for July 2021 stood at 10.50 percent, up by 0.30 percentage point from 10.20 percent in June 2021.

The monthly consumer price inflation for July 2021 is 1.53 percent; up by 0.88 percentage point from 0.65 percent in June, 2021.

ANNUAL (YEAR-ON-YEAR) CONSUMER PRICE INFLATION: DETAILED BY MAIN COICOP¹ HEADINGS

- ✓ Food and non-alcoholic beverages declined by 1.72 percentage points from 17.12 percent in June 2021 to 15.40 percent in July 2021.
- ✓ Alcoholic beverages, tobacco and narcotics increased from 12.18 percent in June 2021 to 19.52 percent in July 2021. The inflation rate increased by 7.34 percentage points year-on-year.
- ✓ Clothing and footwear declined by 0.07 percentage point from 5.92 percent in June 2021 to 5.85 percent in July 2021.
- ✓ Housing, water, electricity, gas and other fuels increased from 8.37 percent in June 2021 to 8.75 percent in July 2021. The inflation rate increased by 0.38 percentage point year-on-year.
- ✓ Furniture, household equipment and household maintenance increased from 11.12 percent in June 2021 to 15.82 percent in July 2021. The inflation rate increased by 4.70 percentage points year-on-year.
- ✓ Health increased from 0.22 percent in June 2021 to 0.87 percent in July 2021. The inflation rate increased by 0.65 percentage point year-on-year.
- ✓ Transport increased from 3.67 percent in June 2021 to 10.85 percent in July 2021. The inflation rate increased by 7.18 percentage points year-on-year.
- ✓ Communication increased from 1.34 percent in June 2021 to 2.36 percent in July 2021. The inflation rate increased by 1.02 percentage point year-on-year.
- ✓ Recreation and culture declined by 0.13 percentage point from 1.54 percent in June 2021 to 1.41 percent in July 2021.
- ✓ For Education services, no change is noticed between June, 2021 and July, 2021.
- ✓ Restaurant and hotels increased from 1.69 percent in June 2021 to 2.71 percent in July 2021. The inflation rate increased by 1.02 percentage point year-on-year.
- ✓ Miscellaneous goods and services increased from -3.39 percent in June 2021 to 1.13 percent in July 2021. The inflation rate increased by 4.52 percentage point year-on-year.

¹ Classification of Individual Consumption by Purpose

MONTHLY CONSUMER PRICE INFLATION: DETAILED BY MAIN COICOP² HEADINGS

- ✓ Food and non-alcoholic beverages declined by 0.09 percentage point from 0.92 percent in June 2021 to 0.83 percent in July 2021.
- ✓ Alcoholic beverages, tobacco and narcotics increased from 1.50 percent in June 2021 to 6.61 percent in July 2021. The inflation rate increased by 5.11 percentage points year-on-year.
- ✓ Clothing and footwear increased from 1.20 percent in June 2021 to 1.59 percent in July 2021. The inflation rate increased by 0.39 percentage point year-on-year
- ✓ Housing, water, electricity, gas and other fuels declined by 1.39 percentage points from 1.75 percent in June 2021 to 0.36 percent in July 2021.
- ✓ Furniture, household equipment and household maintenance increased from 2.15 percent in June 2021 to 5.16 percent in July 2021. The inflation rate increased by 3.01 percentage points year-on-year
- ✓ Health increased from -1.09 percent in June 2021 to 0.97 percent in July 2021. The inflation rate increased by 2.06 percentage points year-on-year
- ✓ Transport increased from 0.51 percent in June 2021 to 8.24 percent in July 2021. The inflation rate increased by 7.73 percentage points year-on-year
- ✓ Communication increased from -0.01 percent in June 2021 to 0.02 percent in July 2021. The inflation rate increased by 0.03 percentage point year-on-year
- ✓ Recreation and culture increased from 0.76 percent in June 2021 to 1.44 percent in July 2021. The inflation rate increased by 0.68 percentage point year-on-year
- ✓ Education declined by 0.54 percentage points from 0.54 percent in June 2021 to 0.00 percent in July 2021.
- ✓ Restaurants and hotels services increased from 0.35 percent in June 2021 to 1.22 percent in July 2021. The inflation rate increased by 0.87 percentage point year-on-year
- ✓ Miscellaneous goods and services increased from -2.45 percent in June 2021 to 2.17 percent in July 2021. The inflation rate increased by 4.62 percentage points year-on-year

² Classification of Individual Consumption by Purpose

JULY 2021 CONSUMER PRICE INDEX (CPI): DETAILED BY REGIONS

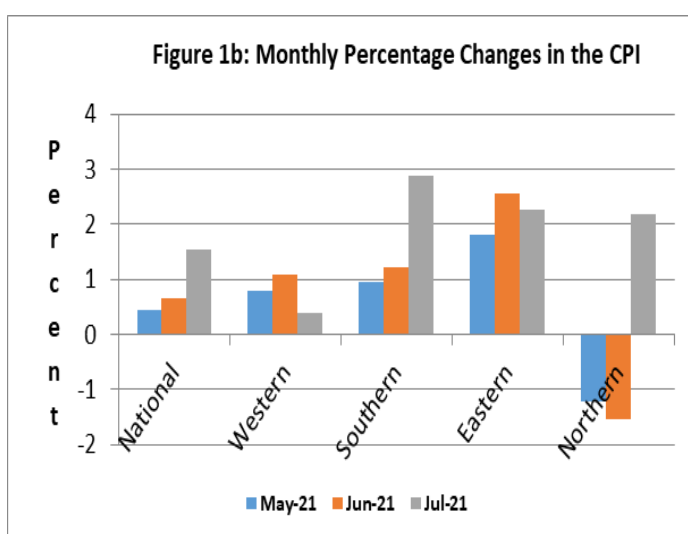
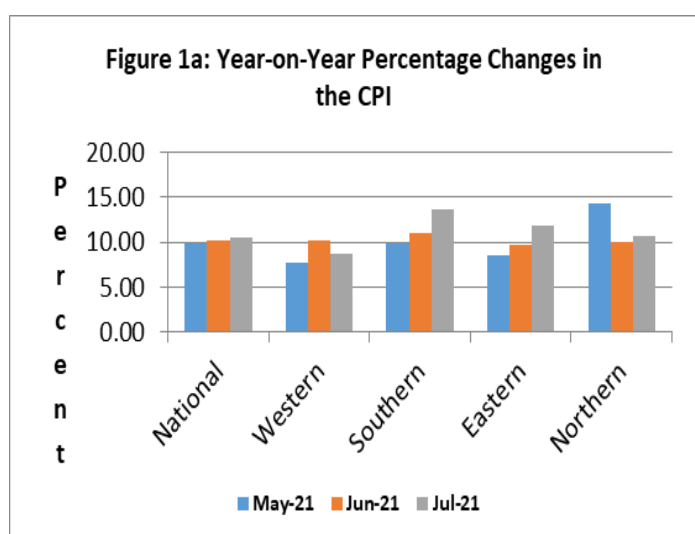
The National Monthly CPI (2008=100) increased from 338.28 in June 2021 to 343.47 in July 2021, resulting to 1.53 percent inflation this month. The national year-on-year inflation for June 2021 stood at 10.50 percent, indicating an upwards trend compared to 10.20 percent in June 2021. Three regions show an upward movement: Southern region from 10.99 percent in June to 13.73 percent in July 2021, Eastern region from 9.66 percent in June 2021 to 11.87 percent in July 2021 and Northern region from 10.01 percent in June 2021 to 10.63 in July 2021 and a downwards movement in the Western Area region from 10.17 percent in June 2021 to 8.73 percent in July 2021.

Table 1: National and Regional Year-on-Year and Monthly Inflation rates

| 2008=100 | | | | | | | | | | |
|------------|--------------|---------|--------------|---------|----------------|---------|-----------------|---------|-----------------|---------|
| Month | National | | Western Area | | Eastern Region | | Southern Region | | Northern Region | |
| | Year-on-Year | Monthly | Year-on-Year | Monthly | Year-on-Year | Monthly | Year-on-Year | Monthly | Year-on-Year | Monthly |
| June, 2021 | 10.20 | 0.65 | 10.17 | 1.10 | 9.66 | 2.56 | 10.99 | 1.21 | 10.01 | -1.54 |
| July, 2021 | 10.50 | 1.53 | 8.73 | 0.40 | 11.87 | 2.27 | 13.73 | 2.87 | 10.63 | 2.18 |

It is observed from the table above that the year-on-year inflation rates for the Southern, Eastern and Northern regions are above the national estimate for the month of July, 2021; while Western region estimate is below.

Figures 1a &1b below illustrate the last three months' estimates of the year-on-year inflation and monthly inflation respectively at National and Regional levels.



SELECTED INFLATION RATES AND CPI BY MAIN COICOP HEADING

Table 1.1 below shows the National CPI of the months of July 2020 and July, 2021; as well as the 12 months change in the CPI for the main COICOP functions.

Table 1.1: National CPI and rates of inflation by main COICOP functions (2008=100)

| COICOP | WEIGHT | Jul-20 | Apr-21 | May-21 | Jun-21 | Jul-21 | Monthly Inflation | 3 Months Change Inflation | 12 Months Inflation |
|--|------------|----------------------|----------------------------|----------------------------|--------------------------|--------------------------|-------------------|---------------------------|---------------------|
| | | Month Previous Year- | Month m-2 for Current Year | Month m-1 for Current Year | Month m for Current Year | Month m for Current Year | | | |
| Food and Non-Alcoholic Beverages | 41.86 | 327.56 | 367.72 | 371.51 | 374.91 | 378.02 | 0.83 | 2.8 | 15.40 |
| Alcoholic Beverages, Tobacco and Narcotics | 1.71 | 291.48 | 323.95 | 321.94 | 326.78 | 348.37 | 6.61 | 7.54 | 19.52 |
| Clothing and Footwear | 7.34 | 370.96 | 391.95 | 381.95 | 386.54 | 392.67 | 1.59 | 0.18 | 5.85 |
| Housing, Water, Electricity, Gas and Other Fuels | 13.70 | 223.59 | 237.53 | 238.11 | 242.28 | 243.15 | 0.36 | 2.37 | 8.75 |
| Furniture, Household Equipment and Household Maintenance | 5.86 | 358.21 | 384.85 | 386.20 | 394.52 | 414.87 | 5.16 | 7.8 | 15.82 |
| Health | 11.36 | 371.11 | 372.23 | 374.83 | 370.73 | 374.34 | 0.97 | 0.57 | 0.87 |
| Transport | 7.75 | 276.48 | 283.75 | 281.71 | 283.15 | 306.49 | 8.24 | 8.01 | 10.85 |
| Communication | 2.04 | 174.35 | 178.44 | 178.44 | 178.43 | 178.46 | 0.02 | 0.01 | 2.36 |
| Recreation and Culture | 1.47 | 238.89 | 235.80 | 237.05 | 238.84 | 242.27 | 1.44 | 2.74 | 1.41 |
| Education | 2.88 | 206.57 | 225.26 | 225.26 | 226.47 | 226.47 | 0.00 | 0.54 | 9.63 |
| Restaurant and Hotels | 0.92 | 362.60 | 347.52 | 366.66 | 367.94 | 372.44 | 1.22 | 7.17 | 2.71 |
| Miscellaneous Goods & Services | 3.13 | 282.20 | 284.58 | 286.37 | 279.34 | 285.39 | 2.17 | 0.28 | 1.13 |
| All Items | 100 | 310.84 | 334.60 | 336.08 | 338.28 | 343.47 | 1.53 | 2.65 | 10.50 |

FOOD³ AND NON-FOOD⁴ COMPONENTS

On a whole, food items inflation decreased by 1.72 percentage points from 17.12 percent in June 2021 to 15.40 percent in July 2021. The following food items declined: imported broken rice (4%), imported long grained rice (8%), imported medium grained rice (1%), fresh herring (6%), pollock (8%), pineapple (6%) and several other food items increased marginally.

The non-food items inflation increased by 1.85 percentage points from 4.53 in June 2021 to 6.40 percent in July 2021. In the non-food category eight divisions went up, while the remaining two went down. Substantial increases were noticed in the alcoholic beverages, tobacco and narcotics (7.34 percentage points) and in transportation category (7.18 percentage points).

NOTE: The National CPI measures the change in prices, on average, from month to month, of the goods and services bought by households, in Freetown, Bo, Kenema, Kono and Makeni and include all expenditure groups. Prices are collected for at least 436 items. All prices collected are the prevailing retail market prices from six (6) markets in Freetown and, three (3) Markets each in Bo,

³ Food and Non-Alcoholic Beverages

⁴ All other main COICOP Functions excluding Food and Non-Alcoholic Beverages

Kenema, Makeni and Kono for weekly prices and other outlets for monthly items whose prices are less likely to fluctuate rapidly. We are using the Modified Laspeyres formula to compute indices according to the Classification of Individual Consumption by Purpose (COICOP) with 12 functions.

Table 1.2: 2021 Food and Non-food inflation rates

| Items | Jan | Feb | Mar | April | May | June | July | Aug | Sept | Oct | Nov | Dec |
|----------------------------------|-------|-------|-------|-------|-------|-------|-------|-----|------|-----|-----|-----|
| Food and Non-alcoholic Beverages | 18.88 | 19.59 | 15.45 | 15.64 | 17.56 | 17.12 | 15.40 | | | | | |
| Non-food | 5.87 | 4.24 | 3.88 | 4.67 | 3.57 | 4.53 | 6.40 | | | | | |

Table 2: Year-on-Year and Monthly Inflation Rates

| | National CPI (2008=100) | | | Western Area/Freetown CPI (2008=100) | | |
|----------------|-------------------------|-----------------------|----------------|--------------------------------------|-----------------------|----------------|
| | CPI | Year-on-Year % Change | Monthly Change | CPI | Year-on-Year % Change | Monthly Change |
| 2017 | | | | | | |
| January | 191.59 | 18.66 | 2.24 | 197.56 | 18.64 | 2.58 |
| February | 194.63 | 19.82 | 1.59 | 200.70 | 19.72 | 1.59 |
| March | 196.15 | 20.22 | 0.78 | 202.36 | 20.16 | 0.83 |
| April | 197.66 | 19.80 | 0.77 | 204.09 | 19.81 | 0.85 |
| May | 198.72 | 18.91 | 0.54 | 204.49 | 18.09 | 0.20 |
| June | 200.85 | 19.14 | 1.07 | 206.40 | 18.07 | 0.93 |
| July | 202.87 | 18.56 | 1.01 | 207.94 | 18.33 | 0.75 |
| August | 204.75 | 18.01 | 0.93 | 209.55 | 17.17 | 0.77 |
| September | 206.35 | 17.83 | 0.78 | 211.50 | 17.56 | 0.93 |
| October | 207.88 | 16.86 | 0.74 | 212.93 | 16.30 | 0.67 |
| November | 212.46 | 16.26 | 2.20 | 217.34 | 16.45 | 2.07 |
| December | 216.11 | 15.33 | 1.72 | 220.98 | 14.74 | 1.67 |
| Average | 202.50 | 18.28 | 1.20 | 207.99 | 17.92 | 1.15 |
| 2018 | | | | | | |
| January | 219.73 | 14.69 | 1.68 | 223.74 | 13.25 | 1.25 |
| February | 222.65 | 14.40 | 1.33 | 226.02 | 12.62 | 1.02 |
| March | 225.40 | 14.91 | 1.24 | 228.17 | 12.76 | 0.95 |
| April | 227.58 | 15.14 | 0.97 | 229.58 | 12.49 | 0.62 |
| May | 230.55 | 16.02 | 1.31 | 232.64 | 13.77 | 1.34 |
| June | 234.13 | 16.57 | 1.55 | 235.92 | 14.31 | 1.41 |
| July | 238.79 | 17.71 | 1.99 | 241.88 | 16.32 | 2.52 |
| August | 242.00 | 18.19 | 1.34 | 246.79 | 17.77 | 2.03 |
| September | 243.00 | 17.77 | 0.43 | 245.62 | 16.13 | -0.47 |
| October | 241.30 | 16.06 | -0.72 | 242.86 | 14.06 | -1.12 |
| November | 247.60 | 16.55 | 2.64 | 250.50 | 15.25 | 3.14 |
| December | 246.90 | 14.25 | -0.29 | 247.61 | 12.05 | -1.15 |
| Average | 234.97 | 16.02 | 1.12 | 237.61 | 14.23 | 0.96 |

More information can also be obtained from our website: www.statistics.sl

For more detailed Information: Subscribe to the Detailed CPI Report. Please Contact:
The Statistician General, Statistics Sierra Leone, P. O. Box 595, Tower Hill, Freetown, SIERRA LEONE
E-mail: statistics@statistics.sl or info@statistics.sl

Table 2: (Cont'd)

| | National CPI (2008=100) | | | Western Area/Freetown CPI (2008=100) | | |
|----------------|-------------------------|---------------------------|-------------------|--------------------------------------|---------------------------|-------------------|
| | CPI | Year-on- Year % Change | Monthly Change | CPI | Year-on –Year % Change | Monthly Change |
| 2019 | | | | | | |
| January | 251.27 | 14.35 | 1.77 | 249.40 | 11.47 | 0.72 |
| February | 254.01 | 14.08 | 1.09 | 257.62 | 13.98 | 3.30 |
| March | 258.69 | 14.77 | 1.84 | 262.29 | 14.95 | 1.81 |
| April | 265.27 | 16.56 | 2.54 | 267.74 | 16.62 | 2.08 |
| May | 265.07 | 14.97 | -0.08 | 266.18 | 14.41 | -0.58 |
| June | 268.42 | 14.65 | 1.26 | 269.19 | 14.10 | 1.13 |
| July | 274.35 | 14.89 | 2.21 | 271.38 | 12.20 | 0.81 |
| August | 279.34 | 15.43 | 1.82 | 279.90 | 13.41 | 3.14 |
| September | 279.86 | 15.16 | 0.19 | 276.56 | 12.59 | -1.19 |
| October | 279.49 | 15.85 | -0.13 | 281.63 | 15.96 | 1.83 |
| November | 280.04 | 13.09 | 0.20 | 289.71 | 15.66 | 2.87 |
| December | 281.20 | 13.89 | 0.41 | 294.07 | 18.76 | 1.50 |
| Average | 269.75 | 14.81 | 1.09 | 272.14 | 14.51 | 1.45 |
| 2020 | | | | | | |
| January | 285.45 | 13.60 | 1.51 | 299.50 | 20.09 | 1.84 |
| February | 291.33 | 14.69 | 2.06 | 306.04 | 18.79 | 2.18 |
| March | 298.95 | 15.56 | 2.62 | 310.61 | 18.42 | 1.49 |
| April | 305.28 | 15.08 | 2.12 | 315.76 | 17.94 | 1.66 |
| May | 306.07 | 15.47 | 0.26 | 319.41 | 20.00 | 1.15 |
| Jun | 306.97 | 14.36 | 0.29 | 315.75 | 17.29 | -1.15 |
| Jul | 310.84 | 13.30 | 1.26 | 321.21 | 18.36 | 1.73 |
| Aug | 316.56 | 13.32 | 1.84 | 325.23 | 16.20 | 1.25 |
| Sept | 318.22 | 13.71 | 0.52 | 328.56 | 18.81 | 1.02 |
| Oct | 312.22 | 11.71 | -1.89 | 318.35 | 13.04 | -3.11 |
| Nov | 309.82 | 10.63 | -0.77 | 317.68 | 9.65 | -0.21 |
| Dec | 310.58 | 10.45 | 0.25 | 320.01 | 8.82 | 0.73 |
| Average | 306.02 | 13.49 | 0.84 | 316.51 | 16.45 | 0.72 |
| 2021 | | | | | | |
| January | 318.27 | 11.50 | 2.48 | 327.32 | 9.29 | 2.28 |
| February | 323.01 | 10.87 | 1.49 | 329.15 | 7.55 | 0.56 |
| March | 325.72 | 8.95 | 0.84 | 335.15 | 7.90 | 1.82 |
| April | 334.60 | 9.60 | 2.73 | 341.38 | 8.11 | 1.86 |
| May | 336.08 | 9.80 | 0.44 | 344.07 | 7.72 | 0.79 |
| Jun | 338.28 | 10.20 | 0.65 | 347.85 | 10.17 | 1.10 |
| Jul | 343.47 | 10.50 | 1.53 | 349.26 | 8.73 | 0.40 |

Table 3: National Consumer Price Index by Main COICOP Groups (2008=100)

| | Food and Non-Alcoholic Beverages | Alcoholic Beverages, Tobacco and Narcotics | Clothing and Footwear | Housing, Water, Electricity, Gas and Other Fuels | Furniture, Household Equipment and Household Maintenance | Health | Transport | Communication | Recreation and Culture | Education | Restaurant and Hotels | Miscellaneous Goods and Services | All Items |
|---------|----------------------------------|--|-----------------------|--|--|--------|-----------|---------------|------------------------|-----------|-----------------------|----------------------------------|-----------|
| Weight | 41.86 | 1.71 | 7.34 | 13.7 | 5.86 | 11.36 | 7.75 | 2.04 | 1.47 | 2.88 | 0.92 | 3.13 | 100 |
| Jan-17 | 204.76 | 181.11 | 216.4 | 165.98 | 215.6 | 183.42 | 173.05 | 148.89 | 180.22 | 136.84 | 182.64 | 187.32 | 191.59 |
| Feb-17 | 208.42 | 186.2 | 221.43 | 167.42 | 221.35 | 185.87 | 173.85 | 150.43 | 180.65 | 136.91 | 182.74 | 190.46 | 194.63 |
| Mar-17 | 210.81 | 190.78 | 221.69 | 167.97 | 222.42 | 186.13 | 176.25 | 150.52 | 181.21 | 137.08 | 184.93 | 191.65 | 196.15 |
| Apr-17 | 211.73 | 192.07 | 224.05 | 168.43 | 226.5 | 188.8 | 180.03 | 153.23 | 181.88 | 137.21 | 186.93 | 193.3 | 197.66 |
| May-17 | 212.33 | 193.55 | 227.95 | 168.96 | 226.53 | 189.34 | 183.8 | 154.16 | 182.71 | 137.22 | 189.74 | 195.38 | 198.72 |
| Jun-17 | 214.56 | 195.64 | 233.71 | 169.47 | 230.04 | 191.33 | 184.16 | 156.1 | 185.35 | 137.51 | 190.92 | 197.51 | 200.85 |
| Jul-17 | 217.85 | 197.43 | 234.78 | 169.8 | 231.65 | 193 | 184.7 | 156.96 | 185.8 | 137.65 | 192.15 | 199.62 | 202.87 |
| Aug-17 | 220.49 | 202.41 | 235.42 | 170.01 | 234.36 | 194.21 | 185.1 | 157.52 | 186.46 | 138.55 | 195.97 | 203.91 | 204.75 |
| Sept-17 | 221.96 | 204.02 | 237.81 | 170.27 | 237.6 | 196.62 | 186.54 | 160.62 | 187.72 | 138.85 | 199.6 | 205.61 | 206.35 |
| Oct-17 | 223.88 | 206.03 | 239.05 | 170.71 | 240.1 | 197.87 | 187.36 | 161.93 | 190.35 | 139.17 | 203.05 | 207.79 | 207.88 |
| Nov-17 | 231.59 | 209.96 | 242.24 | 172.65 | 242.46 | 199.36 | 187.63 | 163.72 | 193.65 | 141.25 | 205.38 | 212.08 | 212.46 |
| Dec-17 | 236.14 | 215.57 | 248.21 | 174.79 | 246.89 | 201.37 | 188.95 | 164.78 | 196.29 | 143.49 | 211.1 | 214.87 | 216.11 |
| Jan-18 | 240.61 | 218.27 | 251.93 | 176.68 | 249.13 | 205.92 | 190.98 | 165.94 | 198.83 | 147.19 | 214.47 | 217.67 | 219.73 |
| Feb-18 | 243.6 | 222.52 | 254.76 | 178.69 | 254.02 | 209.47 | 191.54 | 170.77 | 201.11 | 148.5 | 220.16 | 220.6 | 222.65 |
| Mar-18 | 246.07 | 226.68 | 257.38 | 180.06 | 260.28 | 213.6 | 192.93 | 171.25 | 205.24 | 150.83 | 225.93 | 224.25 | 225.4 |
| Apr-18 | 248.17 | 229.31 | 258.64 | 181.16 | 262.12 | 217.72 | 193.83 | 172.23 | 207.54 | 152.61 | 230.49 | 228.49 | 227.58 |
| May-18 | 252.09 | 232.24 | 262.07 | 183.59 | 263.81 | 219.84 | 195.17 | 172.8 | 209.48 | 153.13 | 234.05 | 231.32 | 230.55 |
| Jun-18 | 256.72 | 236.77 | 265.64 | 185.6 | 268.26 | 223.15 | 196.28 | 173.87 | 211.05 | 154.68 | 238.77 | 234.5 | 234.13 |
| Jul-18 | 259.39 | 240.41 | 267.99 | 197.69 | 274.18 | 226.57 | 211.78 | 175.02 | 212.51 | 155.74 | 244.95 | 235.47 | 238.79 |
| Aug-18 | 264.13 | 243.64 | 274.6 | 202.29 | 289.45 | 224.45 | 215.98 | 144.21 | 212.73 | 157.46 | 254.01 | 231.41 | 241.99 |
| Sep-18 | 266.47 | 249.53 | 275.38 | 203.96 | 283.93 | 226.97 | 219.94 | 146.47 | 219.42 | 119.82 | 251.8 | 240.5 | 243.02 |
| Oct-18 | 262.55 | 241.85 | 278.15 | 201.81 | 285.75 | 228.72 | 220.56 | 147.15 | 217.34 | 119.82 | 270.9 | 232.25 | 241.26 |
| Nov-18 | 270.26 | 256.4 | 286.95 | 207.29 | 290.83 | 232.6 | 223.78 | 148.09 | 222.5 | 120.55 | 258.64 | 243.09 | 247.62 |
| Dec-18 | 266.29 | 250.55 | 283.81 | 208.13 | 284.5 | 246.04 | 229.18 | 144.51 | 215.92 | 120.55 | 289.65 | 227.76 | 246.9 |
| Jan-19 | 266.00 | 260.05 | 311.87 | 209.80 | 294.04 | 253.14 | 227.03 | 145.37 | 224.03 | 120.97 | 279.86 | 244.01 | 251.27 |
| Feb-19 | 269.18 | 264.64 | 309.94 | 209.37 | 309.97 | 253.94 | 225.81 | 160.61 | 240.73 | 121.66 | 280.52 | 248.62 | 254.01 |
| Mar-19 | 276.29 | 267.26 | 316.58 | 212.03 | 314.69 | 257.44 | 226.29 | 159.17 | 231.29 | 122.27 | 286.81 | 250.51 | 258.69 |
| Apr-19 | 287.67 | 280.13 | 321.05 | 216.88 | 322.77 | 252.71 | 230.26 | 159.29 | 236.17 | 123.45 | 284.89 | 259.34 | 265.27 |
| May-19 | 271.03 | 274.68 | 331.20 | 211.64 | 348.38 | 291.15 | 235.67 | 176.63 | 227.26 | 134.65 | 279.30 | 267.67 | 265.07 |
| Jun -19 | 273.74 | 275.25 | 338.34 | 211.26 | 359.29 | 303.77 | 237.49 | 178.37 | 222.02 | 122.47 | 281.26 | 265.58 | 268.42 |
| Jul-19 | 279.31 | 281.22 | 345.66 | 217.16 | 362.95 | 311.80 | 250.00 | 165.16 | 224.49 | 122.47 | 294.50 | 274.17 | 274.35 |
| Aug-19 | 286.00 | 286.45 | 334.19 | 217.52 | 351.19 | 345.08 | 244.26 | 171.13 | 219.31 | 122.47 | 292.64 | 258.01 | 279.34 |
| Sept-19 | 288.59 | 281.58 | 334.92 | 218.53 | 356.37 | 331.87 | 250.41 | 155.92 | 218.37 | 122.47 | 328.86 | 267.89 | 279.86 |
| Oct-19 | 286.36 | 280.77 | 333.75 | 221.95 | 358.16 | 333.1 | 250.5 | 155.92 | 217.99 | 122.47 | 327.57 | 268.52 | 279.49 |
| Nov-19 | 280.04 | 269.2 | 333.1 | 226.15 | 344.01 | 343.26 | 249.99 | 155.92 | 223.13 | 206.57 | 318.96 | 263.91 | 280.04 |
| Dec-19 | 280.62 | 279.46 | 328.60 | 229.75 | 347.76 | 344.33 | 255.46 | 155.90 | 222.51 | 206.57 | 318.99 | 263.45 | 281.20 |

More information can also be obtained from our website: www.statistics.sl

For more detailed information: Subscribe to the Detailed CPI Report. Please Contact:
The Statistician General, Statistics Sierra Leone, P. O. Box 595, Tower Hill, Freetown, SIERRA LEONE
E-mail: statistics@statistics.sl or info@statistics.sl

Table 3: (Cont'd)

| | Food and Non-Alcoholic Beverages | Alcoholic Beverages, Tobacco and Narcotics | Clothing and Footwear | Housing, Water, Electricity, Gas and Other Fuels | Furniture, Household Equipment and Household Maintenance | Health | Transport | Communication | Recreation and Culture | Education | Restaurant and Hotels | Miscellaneous Goods and Services | All Items |
|---------|----------------------------------|--|-----------------------|--|--|--------|-----------|---------------|------------------------|-----------|-----------------------|----------------------------------|-----------|
| Jan-20 | 285.84 | 288.03 | 337.24 | 231.49 | 347.52 | 342.89 | 267.38 | 155.87 | 223.65 | 206.57 | 339.5 | 270.3 | 285.45 |
| Feb-20 | 291.53 | 275.23 | 341.22 | 233.51 | 335.71 | 371.28 | 268.79 | 163.83 | 224.43 | 206.57 | 336.83 | 266.44 | 291.33 |
| Mar-20 | 303.57 | 279.46 | 349.3 | 229.35 | 340.8 | 382.19 | 265.91 | 172.83 | 231.42 | 206.57 | 344.58 | 277.43 | 298.95 |
| Apr-20 | 317.98 | 284.66 | 354.54 | 221.18 | 347.49 | 384.89 | 262.71 | 172.84 | 233.56 | 206.57 | 349.09 | 280.92 | 305.28 |
| May-20 | 316.02 | 286.87 | 358.67 | 223.69 | 349.37 | 389.01 | 263.61 | 174.33 | 233.85 | 206.57 | 357.22 | 284.91 | 306.07 |
| Jun-20 | 320.11 | 291.3 | 364.95 | 223.57 | 355.04 | 369.92 | 273.12 | 176.07 | 235.21 | 206.57 | 361.83 | 289.13 | 306.97 |
| Jul-20 | 327.56 | 291.48 | 370.96 | 223.59 | 358.21 | 371.11 | 276.48 | 174.35 | 238.89 | 206.57 | 362.60 | 282.20 | 310.84 |
| Aug-20 | 336.69 | 291.16 | 377.52 | 223.35 | 361.94 | 378.06 | 275.26 | 178.66 | 239.92 | 206.57 | 359.63 | 288.8 | 316.56 |
| Sept-20 | 339.82 | 287.7 | 379.9 | 226.13 | 365.98 | 377.54 | 273.04 | 175.55 | 240.98 | 206.57 | 346.71 | 289.35 | 318.22 |
| Oct-20 | 325.55 | 283.86 | 394.65 | 221.04 | 366.29 | 376.82 | 269.11 | 174.19 | 240.00 | 206.57 | 345.1 | 292.41 | 312.22 |
| Nov-20 | 321.94 | 279.62 | 391.07 | 218.08 | 364.97 | 380.22 | 268.45 | 174.71 | 235.21 | 206.57 | 334.78 | 286.74 | 309.82 |
| Dec-20 | 322.98 | 296.29 | 391.52 | 220.66 | 370.75 | 369.95 | 272.42 | 180.61 | 233.02 | 225.26 | 334.55 | 280.34 | 310.58 |
| Jan-21 | 339.82 | 295.96 | 389.12 | 222.35 | 368.9 | 373.19 | 270.93 | 181.26 | 233.59 | 225.26 | 334.71 | 282.66 | 318.27 |
| Feb-21 | 348.63 | 297.98 | 385.42 | 233.09 | 379.88 | 360.91 | 281.87 | 181.7 | 234.8 | 225.26 | 342.3 | 286.93 | 323.01 |
| Mar-21 | 350.46 | 307.34 | 379.79 | 236.04 | 380.5 | 375.08 | 282.42 | 178.44 | 234.79 | 225.26 | 340.47 | 286.5 | 325.72 |
| Apr-21 | 367.72 | 323.95 | 391.95 | 237.53 | 384.85 | 372.23 | 283.75 | 178.44 | 235.8 | 225.26 | 347.52 | 284.58 | 334.60 |
| May-21 | 371.51 | 321.94 | 381.95 | 238.11 | 386.2 | 374.83 | 281.71 | 178.44 | 237.05 | 225.26 | 366.66 | 286.37 | 336.08 |
| Jun-21 | 374.91 | 326.78 | 386.54 | 242.28 | 394.52 | 370.73 | 283.15 | 178.43 | 238.84 | 226.47 | 367.94 | 279.34 | 338.28 |
| Jul-21 | 378.02 | 348.37 | 392.67 | 243.15 | 414.87 | 374.34 | 306.49 | 178.46 | 242.27 | 226.47 | 372.44 | 285.39 | 343.47 |