



**STATISTICS SIERRA LEONE**  
(Stats SL)

*Credible Data for National Development*

# CONSUMER PRICE INDEX AUGUST 2021 PRESS RELEASE

Released: 20<sup>th</sup> September, 2021 @ 12: 00 noon

**Contact Persons:**

**Mwaluma Andrew Bryma GEGBE, MA, MSc**

Director of National Accounts and Economic Statistics Division  
Statistics Sierra Leone

Mobile: +23279442430/ +23288000898

Email: [mwaluma.gegbe@statistics.sl](mailto:mwaluma.gegbe@statistics.sl)

Skype: mwaluma.gegbe

**Isata M. ALLIEU-KEIKURA, MSc**

Principal Statistician and Head, Price & Labour Statistics Section  
National Accounts and Economic Statistics Division  
Statistics Sierra Leone

Mobile: +23276580842

Email: [isata.allieu-keikura@statistics.sl](mailto:isata.allieu-keikura@statistics.sl)

**Reviewed by**

**Andrew Bob JOHNNY, MSc**

Deputy Statistician General  
Statistics Sierra Leone

Email: [andrew.johnny@statistics.sl](mailto:andrew.johnny@statistics.sl)

**Approved for release by:**

**Prof. Osman SANKOH, DSc**

Statistician General & CEO  
Statistics Sierra Leone

Email: [osman.sankoh@statistics.sl](mailto:osman.sankoh@statistics.sl)

**20<sup>th</sup> September, 2021**

## CONTENTS

CONTENTS .....	1
KEY FINDINGS.....	2
HEADLINE NATIONAL INFLATION RATES .....	2
ANNUAL (YEAR-ON-YEAR) CONSUMER PRICE INFLATION: DETAILED BY MAIN COICOP HEADINGS ..	2
MONTHLY CONSUMER PRICE INFLATION: DETAILED BY MAIN COICOP HEADINGS.....	3
AUGUST 2021 CONSUMER PRICE INDEX (CPI): DETAILED BY REGIONS.....	4
SELECTED INFLATION RATE AND CPI BY MAIN COICOP HEADING.....	5
FOOD AND NON-FOOD COMPONENTS.....	5

## LIST OF TABLES

Table 1: National & Regional Year-on-Year and Monthly Inflation rates .....	4
Table 1.1: National CPI and rates of inflation by main COICOP functions (2008=100) .....	5
Table 1.2: 2021 Food and Non-food inflation rates .....	6
Table 2: Year-on-Year and Monthly Inflation Rates .....	6
Table 3: National Consumer Price Index by Main COICOP Groups (2008=100).....	8

## LIST OF FIGURES

Figure 1a: Year-on-Year Percentage Changes in the CPI.....	1
Figure 1b: Monthly Percentage Changes in the CPI.....	1

## KEY FINDINGS

### HEADLINE NATIONAL INFLATION RATES

Annual National Consumer Price Inflation (year-on-year) for August 2021 stood at 10.88 percent, up by 0.38 percentage point from 10.50 percent in July 2021.

The monthly consumer price inflation for August 2021 is 2.19 percent; up by 0.66 percentage point from 1.53 percent in July, 2021.

### ANNUAL (YEAR-ON-YEAR) CONSUMER PRICE INFLATION: DETAILED BY MAIN COICOP<sup>1</sup> HEADINGS

#### Upward movers

- ✓ Transport, with weight 7.75 percent, **increased** from 10.85 percent in July 2021 to 20.10 percent in August 2021. The inflation rate increased by 9.25 percentage points year-on-year.
- ✓ Alcoholic beverages, tobacco and narcotics, with weight 1.71 percent, **increased** from 19.52 percent in July 2021 to 24.21 percent in August 2021. The inflation rate increased by 4.69 percentage points year-on-year.
- ✓ Housing, water, electricity, gas and other fuels, with weight 13.70 percent, **increased** from 8.75 percent in July 2021 to 11.72 percent in August 2021. The inflation rate increased by 2.97 percentage points year-on-year.
- ✓ Restaurant and hotels, with weight 0.92 percent, **increased** from 2.71 percent in July 2021 to 3.96 percent in August 2021. The inflation rate increased by 1.25 percentage point year-on-year.
- ✓ Recreation and culture, with weight 1.47 percent, **increased** from 1.41 percent in July 2021 to 2.38 percent in August 2021. The inflation rate increased by 0.97 percentage point year-on-year.

#### Downward movers

- ✓ Furniture, household equipment and household maintenance, with weight 5.86 percent, **declined** by 1.37 percentage point from 15.82 percent in July 2021 to 14.45 percent in August 2021.
- ✓ Health, with weight 11.36 percent, **declined** by 0.21 percentage point from 0.87 percent in July 2021 to 0.66 percent in August 2021.
- ✓ Food and non-alcoholic beverages, with weight 41.86 percent, **declined** by 0.52 percentage point from 15.40 percent in July 2021 to 14.88 percent in August 2021.
- ✓ Clothing and footwear, with weight 7.34 percent, **declined** by 0.03 percentage point from 5.85 percent in July 2021 to 5.82 percent in August 2021.
- ✓ Communication, with weight 2.04 percent, **declined** by 2.46 percentage point from 2.36 percent in July 2021 to -0.10 percent in August 2021.
- ✓ Miscellaneous goods and services, with weight 3.11 percent, **declined** by 1.73 percentage point from 1.13 percent in July 2021 to -0.60 percent in August 2021.

#### Non-mover

- ✓ For Education services, with weight 2.88 percent, **no change** is noticed between July, 2021 and August, 2021.

---

<sup>1</sup> Classification of Individual Consumption by Purpose

## MONTHLY CONSUMER PRICE INFLATION: DETAILED BY MAIN COICOP<sup>2</sup> HEADINGS

### Upward movers

- ✓ Housing, water, electricity, gas and other fuels, with weight 13.70 percent, **increased** from 0.36 percent in July 2021 to 2.62 percent in August 2021. The inflation rate increased by 2.26 percentage points year-on-year
- ✓ Food and non-alcoholic beverages, with weight 41.86 percent, **increased** from 0.83 percent in July 2021 to 2.32 percent in August 2021. The inflation rate increased by 1.49 percentage point year-on-year.
- ✓ Clothing and footwear, with weight 7.34 percent, **increased** from 1.59 percent in July 2021 to 1.74 percent in August 2021. The inflation rate increased by 0.15 percentage point year-on-year
- ✓ Health, with weight 11.36 percent, **increased** from 0.97 percent in July 2021 to 1.66 percent in August 2021. The inflation rate increased by 0.69 percentage point year-on-year.

### Downward movers

- ✓ Transport, with weight 7.75 percent **declined** by 0.38 percentage point from 8.24 percent in July 2021 to 7.86 percent in August 2021.
- ✓ Furniture, household equipment and household maintenance, with weight 5.86 percent, **declined** by 5.31 percentage points from 5.16 percent in July 2021 to -0.15 percent in August 2021.
- ✓ Alcoholic beverages, tobacco and narcotics, with weight 1.71 percent, **declined** by 2.80 percentage points from 6.61 percent in July 2021 to 3.81 percent in August 2021.
- ✓ Recreation and culture, with weight 1.47 percent, **declined** by 0.06 percentage point from 1.44 percent in July 2021 to 1.38 percent in August 2021
- ✓ Restaurant and hotels, with weight 0.92 percent, **declined** by 0.84 percentage point from 1.22 percent in July 2021 to 0.38 percent in August 2021
- ✓ Miscellaneous goods and services, with weight 3.11 percent, **declined** by 1.58 percentage point from 2.17 percent in July 2021 to 0.59 percent in August 2021.

### Non-movers

- ✓ For Education services, with weight 2.88 percent, no change is noticed between July, 2021 and August, 2021.
- ✓ Communication, with weight 2.04 percent, no change is noticed between July, 2021 and August, 2021.

---

<sup>2</sup> Classification of Individual Consumption by Purpose

## AUGUST 2021 CONSUMER PRICE INDEX (CPI): DETAILED BY REGIONS

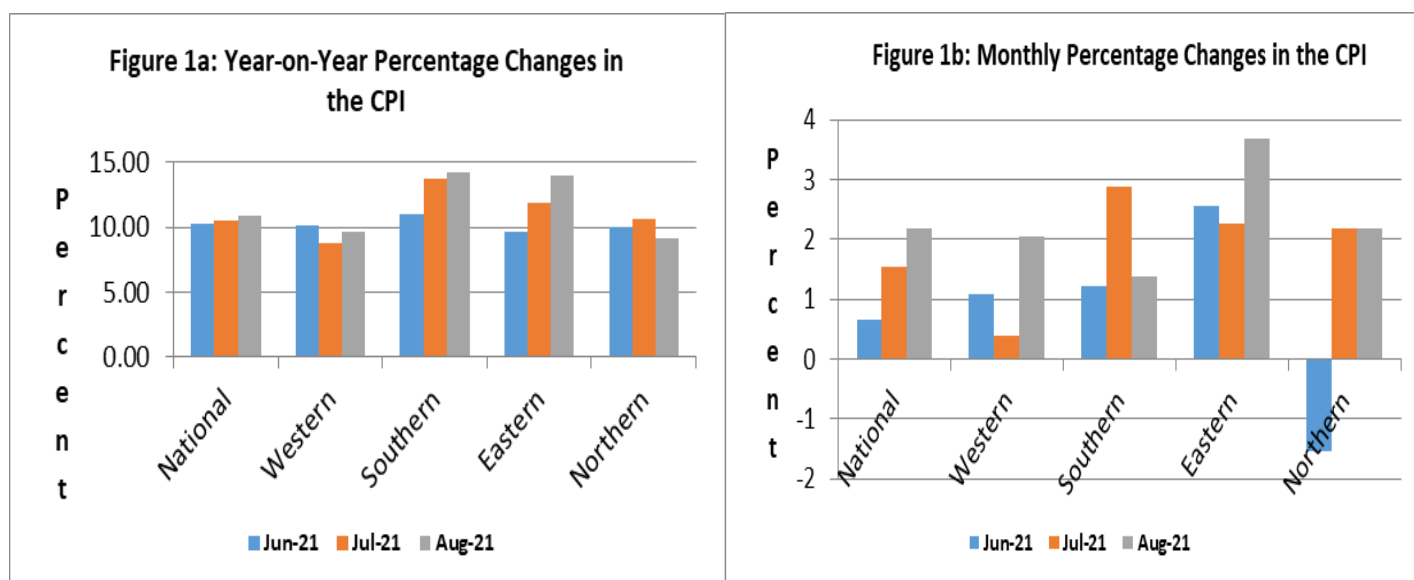
The National Monthly CPI (2008=100) increased from 343.47 in July 2021 to 350.99 in August 2021, resulting to 0.38 percent inflation this month. The national year-on-year inflation for August 2021 stood at 10.88 percent, indicating an upwards trend compared to 10.50 percent in July 2021. Three regions show an upward movement: Southern region from 13.73 percent in July to 14.23 percent in August 2021, Eastern region from 11.87 percent in July 2021 to 14.00 percent in August 2021 and Western region from 8.73 percent in July 2021 to 9.53 in August 2021; only the Northern region moved downwards from 10.63 percent in July 2021 to 9.16 percent in August 2021.

**Table 1: National and Regional Year-on-Year and Monthly Inflation rates**

2008=100										
Month	National		Western Area		Eastern Region		Southern Region		Northern Region	
	Year-on-Year	Monthly	Year-on-Year	Monthly	Year-on-Year	Monthly	Year-on-Year	Monthly	Year-on-Year	Monthly
July, 2021	10.50	1.53	8.73	0.40	11.87	2.27	13.73	2.87	10.63	2.18
Aug, 2021	10.88	2.19	9.58	2.04	<b>14.00</b>	3.69	<b>14.23</b>	1.38	9.16	2.18

It is observed from the table above that the year-on-year inflation rates for the Southern and Eastern regions are above the national estimate for the month of August, 2021; while Northern and Western regions estimate are below.

Figures 1a and 1b below illustrate the last three months' estimates of the year-on-year inflation and monthly inflation respectively at National and Regional levels.



## SELECTED INFLATION RATES AND CPI BY MAIN COICOP HEADING

Table 1.1 below shows the National CPI of the months of August 2020 and August, 2021; as well as the 12 months change in the CPI for the main COICOP functions.

**Table 1.1: National CPI and rates of inflation by main COICOP functions (2008=100)**

COICOP	WEIGHT	Jul-20	Apr-21	May-21	Jun-21	Jul-21	Monthly Inflation	3 Months Change Inflation	12 Months Inflation
		Month Previous Year-	Month m-2 for Current Year	Month m-1 for Current Year	Month m for Current Year	Month m for Current Year			
Food and Non-Alcoholic Beverages	41.86	336.69	371.51	374.91	378.02	386.80	2.32	4.12	14.88
Alcoholic Beverages, Tobacco and Narcotics	1.71	291.16	321.94	326.78	348.37	361.65	3.81	12.33	24.21
Clothing and Footwear	7.34	377.52	381.95	386.54	392.67	399.51	1.74	4.6	5.82
Housing, Water, Electricity, Gas and Other Fuels	13.70	223.35	238.11	242.28	243.15	249.52	2.62	4.79	11.72
Furniture, Household Equipment and Household Maintenance	5.86	361.94	386.20	394.52	414.87	414.23	-0.15	7.26	14.45
Health	11.36	378.06	374.83	370.73	374.34	380.56	1.66	1.53	0.66
Transport	7.75	275.26	281.71	283.15	306.49	330.59	7.86	17.35	20.10
Communication	2.04	178.66	178.44	178.43	178.46	178.49	0.02	0.03	-0.10
Recreation and Culture	1.47	239.92	237.05	238.84	242.27	245.62	1.38	3.62	2.38
Education	2.88	206.57	225.26	226.47	226.47	226.47	0.00	0.54	9.63
Restaurant and Hotels	0.92	359.63	366.66	367.94	372.44	373.87	0.38	1.97	3.96
Miscellaneous Goods & Services	3.11	288.80	286.37	279.34	285.39	287.07	0.59	0.24	-0.60
<b>All Items</b>	<b>100</b>	<b>316.56</b>	<b>336.08</b>	<b>338.28</b>	<b>343.47</b>	<b>350.99</b>	<b>2.19</b>	<b>4.44</b>	<b>10.88</b>

### FOOD<sup>3</sup> AND NON-FOOD<sup>4</sup> COMPONENTS

On a whole, food items inflation decreased by 0.52 percentage point from 15.40 percent in July 2021 to 14.88 percent in August 2021. Most food items inflation moderately increased by a percentage or two and some even declined. Other food items like fishes and green vegetables moderately changed; but notable increases were seen among imported items like spaghetti by 43 percent; vegetable oil, 7 percent; Nescafe classic, by 8 percent and baby food, 14 percent.

The non-food items inflation increased by 1.08 percentage point from 6.40 in July 2021 to 7.48 percent in August 2021. In the non-food category five divisions went up and another five went down. Drastic increases were noticed in Transport (by 9.25 percentage points) and Alcoholic beverages, tobacco and narcotics ( by 4.69 percentage points).

**NOTE:** The National CPI measures the change in prices, on average, from month to month, of the goods and services bought by households, in Freetown, Bo, Kenema, Kono and Makeni and include all expenditure groups. Prices are collected for at least 436 items. All prices collected are the prevailing retail market prices from six (6) markets in Freetown and, three (3) Markets each in Bo, Kenema, Makeni and Kono for weekly prices and other outlets for monthly items whose prices are less likely to fluctuate rapidly. We are using the Modified Laspeyres formula to compute indices according to the Classification of Individual Consumption by Purpose (COICOP) with 12 functions.

<sup>3</sup> Food and Non-Alcoholic Beverages

<sup>4</sup> All other main COICOP Functions excluding Food and Non-Alcoholic Beverages

**Table 1.2: 2021 Food and Non-food inflation rates**

Items	Jan	Feb	Mar	April	May	June	July	Aug	Sept	Oct	Nov	Dec
Food and Non-alcoholic Beverages	18.88	19.59	15.45	15.64	17.56	17.12	15.40	14.88				
Non-food	5.87	4.24	3.88	4.67	3.57	4.53	6.40	7.48				

**Table 2: Year-on-Year and Monthly Inflation Rates**

	National CPI (2008=100)			Western Area/Freetown CPI (2008=100)		
	CPI	Year-on- Year % Change	Monthly Change	CPI	Year-on –Year % Change	Monthly Change
<b>2017</b>						
January	191.59	18.66	2.24	197.56	18.64	2.58
February	194.63	19.82	1.59	200.70	19.72	1.59
March	196.15	20.22	0.78	202.36	20.16	0.83
April	197.66	19.80	0.77	204.09	19.81	0.85
May	198.72	18.91	0.54	204.49	18.09	0.20
June	200.85	19.14	1.07	206.40	18.07	0.93
July	202.87	18.56	1.01	207.94	18.33	0.75
August	204.75	18.01	0.93	209.55	17.17	0.77
September	206.35	17.83	0.78	211.50	17.56	0.93
October	207.88	16.86	0.74	212.93	16.30	0.67
November	212.46	16.26	2.20	217.34	16.45	2.07
December	216.11	15.33	1.72	220.98	14.74	1.67
<b>Average</b>	<b>202.50</b>	<b>18.28</b>	<b>1.20</b>	<b>207.99</b>	<b>17.92</b>	<b>1.15</b>
<b>2018</b>						
January	219.73	14.69	1.68	223.74	13.25	1.25
February	222.65	14.40	1.33	226.02	12.62	1.02
March	225.40	14.91	1.24	228.17	12.76	0.95
April	227.58	15.14	0.97	229.58	12.49	0.62
May	230.55	16.02	1.31	232.64	13.77	1.34
June	234.13	16.57	1.55	235.92	14.31	1.41
July	238.79	17.71	1.99	241.88	16.32	2.52
August	242.00	18.19	1.34	246.79	17.77	2.03
September	243.00	17.77	0.43	245.62	16.13	-0.47
October	241.30	16.06	-0.72	242.86	14.06	-1.12
November	247.60	16.55	2.64	250.50	15.25	3.14
December	246.90	14.25	-0.29	247.61	12.05	-1.15
<b>Average</b>	<b>234.97</b>	<b>16.02</b>	<b>1.12</b>	<b>237.61</b>	<b>14.23</b>	<b>0.96</b>

More information can also be obtained from our website: [www.statistics.sl](http://www.statistics.sl)

**For more detailed Information:** Subscribe to the Detailed CPI Report. Please Contact:  
The Statistician General, Statistics Sierra Leone, P. O. Box 595, Tower Hill, Freetown, SIERRA LEONE  
E-mail: [statistics@statistics.sl](mailto:statistics@statistics.sl) or [info@statistics.sl](mailto:info@statistics.sl)

**Table 2: (Cont'd)**

	National CPI (2008=100)			Western Area/Freetown CPI (2008=100)		
	CPI	Year-on- Year % Change	Monthly Change	CPI	Year-on –Year % Change	Monthly Change
<b>2019</b>						
January	251.27	14.35	1.77	249.40	11.47	0.72
February	254.01	14.08	1.09	257.62	13.98	3.30
March	258.69	14.77	1.84	262.29	14.95	1.81
April	265.27	16.56	2.54	267.74	16.62	2.08
May	265.07	14.97	-0.08	266.18	14.41	-0.58
June	268.42	14.65	1.26	269.19	14.10	1.13
July	274.35	14.89	2.21	271.38	12.20	0.81
August	279.34	15.43	1.82	279.90	13.41	3.14
September	279.86	15.16	0.19	276.56	12.59	-1.19
October	279.49	15.85	-0.13	281.63	15.96	1.83
November	280.04	13.09	0.20	289.71	15.66	2.87
December	281.20	13.89	0.41	294.07	18.76	1.50
<b>Average</b>	<b>269.75</b>	<b>14.81</b>	<b>1.09</b>	<b>272.14</b>	<b>14.51</b>	<b>1.45</b>
<b>2020</b>						
January	285.45	13.60	1.51	299.50	20.09	1.84
February	291.33	14.69	2.06	306.04	18.79	2.18
March	298.95	15.56	2.62	310.61	18.42	1.49
April	305.28	15.08	2.12	315.76	17.94	1.66
May	306.07	15.47	0.26	319.41	20.00	1.15
Jun	306.97	14.36	0.29	315.75	17.29	-1.15
Jul	310.84	13.30	1.26	321.21	18.36	1.73
Aug	316.56	13.32	1.84	325.23	16.20	1.25
Sept	318.22	13.71	0.52	328.56	18.81	1.02
Oct	312.22	11.71	-1.89	318.35	13.04	-3.11
Nov	309.82	10.63	-0.77	317.68	9.65	-0.21
Dec	310.58	10.45	0.25	320.01	8.82	0.73
<b>Average</b>	<b>306.02</b>	<b>13.49</b>	<b>0.84</b>	<b>316.51</b>	<b>16.45</b>	<b>0.72</b>
<b>2021</b>						
January	318.27	11.50	2.48	327.32	9.29	2.28
February	323.01	10.87	1.49	329.15	7.55	0.56
March	325.72	8.95	0.84	335.15	7.90	1.82
April	334.60	9.60	2.73	341.38	8.11	1.86
May	336.08	9.80	0.44	344.07	7.72	0.79
Jun	338.28	10.20	0.65	347.85	10.17	1.10
Jul	343.47	10.50	1.53	349.26	8.73	0.40
Aug	350.99	10.88	2.19	356.38	9.58	2.04



**Table 3: National Consumer Price Index by Main COICOP Groups (2008=100)**

	Food and Non-Alcoholic Beverages	Alcoholic Beverages, Tobacco and Narcotics	Clothing and Footwear	Housing, Water, Electricity, Gas and Other Fuels	Furniture, Household Equipment and Household Maintenance	Health	Transport	Communication	Recreation and Culture	Education	Restaurant and Hotels	Miscellaneous Goods and Services	All Items
Weight	41.86	1.71	7.34	13.7	5.86	11.36	7.75	2.04	1.47	2.88	0.92	3.13	100
Jan-17	204.76	181.11	216.4	165.98	215.6	183.42	173.05	148.89	180.22	136.84	182.64	187.32	191.59
Feb-17	208.42	186.2	221.43	167.42	221.35	185.87	173.85	150.43	180.65	136.91	182.74	190.46	194.63
Mar-17	210.81	190.78	221.69	167.97	222.42	186.13	176.25	150.52	181.21	137.08	184.93	191.65	196.15
Apr-17	211.73	192.07	224.05	168.43	226.5	188.8	180.03	153.23	181.88	137.21	186.93	193.3	197.66
May-17	212.33	193.55	227.95	168.96	226.53	189.34	183.8	154.16	182.71	137.22	189.74	195.38	198.72
Jun-17	214.56	195.64	233.71	169.47	230.04	191.33	184.16	156.1	185.35	137.51	190.92	197.51	200.85
Jul-17	217.85	197.43	234.78	169.8	231.65	193	184.7	156.96	185.8	137.65	192.15	199.62	202.87
Aug-17	220.49	202.41	235.42	170.01	234.36	194.21	185.1	157.52	186.46	138.55	195.97	203.91	204.75
Sept-17	221.96	204.02	237.81	170.27	237.6	196.62	186.54	160.62	187.72	138.85	199.6	205.61	206.35
Oct-17	223.88	206.03	239.05	170.71	240.1	197.87	187.36	161.93	190.35	139.17	203.05	207.79	207.88
Nov-17	231.59	209.96	242.24	172.65	242.46	199.36	187.63	163.72	193.65	141.25	205.38	212.08	212.46
Dec-17	236.14	215.57	248.21	174.79	246.89	201.37	188.95	164.78	196.29	143.49	211.1	214.87	216.11
Jan-18	240.61	218.27	251.93	176.68	249.13	205.92	190.98	165.94	198.83	147.19	214.47	217.67	219.73
Feb-18	243.6	222.52	254.76	178.69	254.02	209.47	191.54	170.77	201.11	148.5	220.16	220.6	222.65
Mar-18	246.07	226.68	257.38	180.06	260.28	213.6	192.93	171.25	205.24	150.83	225.93	224.25	225.4
Apr-18	248.17	229.31	258.64	181.16	262.12	217.72	193.83	172.23	207.54	152.61	230.49	228.49	227.58
May-18	252.09	232.24	262.07	183.59	263.81	219.84	195.17	172.8	209.48	153.13	234.05	231.32	230.55
Jun-18	256.72	236.77	265.64	185.6	268.26	223.15	196.28	173.87	211.05	154.68	238.77	234.5	234.13
Jul-18	259.39	240.41	267.99	197.69	274.18	226.57	211.78	175.02	212.51	155.74	244.95	235.47	238.79
Aug-18	264.13	243.64	274.6	202.29	289.45	224.45	215.98	144.21	212.73	157.46	254.01	231.41	241.99
Sep-18	266.47	249.53	275.38	203.96	283.93	226.97	219.94	146.47	219.42	119.82	251.8	240.5	243.02
Oct-18	262.55	241.85	278.15	201.81	285.75	228.72	220.56	147.15	217.34	119.82	270.9	232.25	241.26
Nov-18	270.26	256.4	286.95	207.29	290.83	232.6	223.78	148.09	222.5	120.55	258.64	243.09	247.62
Dec-18	266.29	250.55	283.81	208.13	284.5	246.04	229.18	144.51	215.92	120.55	289.65	227.76	246.9
Jan-19	266.00	260.05	311.87	209.80	294.04	253.14	227.03	145.37	224.03	120.97	279.86	244.01	251.27
Feb-19	269.18	264.64	309.94	209.37	309.97	253.94	225.81	160.61	240.73	121.66	280.52	248.62	254.01
Mar-19	276.29	267.26	316.58	212.03	314.69	257.44	226.29	159.17	231.29	122.27	286.81	250.51	258.69
Apr-19	287.67	280.13	321.05	216.88	322.77	252.71	230.26	159.29	236.17	123.45	284.89	259.34	265.27
May-19	271.03	274.68	331.20	211.64	348.38	291.15	235.67	176.63	227.26	134.65	279.30	267.67	265.07
Jun-19	273.74	275.25	338.34	211.26	359.29	303.77	237.49	178.37	222.02	122.47	281.26	265.58	268.42
Jul-19	279.31	281.22	345.66	217.16	362.95	311.80	250.00	165.16	224.49	122.47	294.50	274.17	274.35
Aug-19	286.00	286.45	334.19	217.52	351.19	345.08	244.26	171.13	219.31	122.47	292.64	258.01	279.34
Sept-19	288.59	281.58	334.92	218.53	356.37	331.87	250.41	155.92	218.37	122.47	328.86	267.89	279.86
Oct-19	286.36	280.77	333.75	221.95	358.16	333.1	250.5	155.92	217.99	122.47	327.57	268.52	279.49
Nov-19	280.04	269.2	333.1	226.15	344.01	343.26	249.99	155.92	223.13	206.57	318.96	263.91	280.04
Dec-19	280.62	279.46	328.60	229.75	347.76	344.33	255.46	155.90	222.51	206.57	318.99	263.45	281.20

Table 3: (Cont'd)

	Food and Non-Alcoholic Beverages	Alcoholic Beverages, Tobacco and Narcotics	Clothing and Footwear	Housing, Water, Electricity, Gas and Other Fuels	Furniture, Household Equipment and Household Maintenance	Health	Transport	Communication	Recreation and Culture	Education	Restaurant and Hotels	Miscellaneous Goods and Services	All Items
Jan- 20	285.84	288.03	337.24	231.49	347.52	342.89	267.38	155.87	223.65	206.57	339.5	270.3	285.45
Feb-20	291.53	275.23	341.22	233.51	335.71	371.28	268.79	163.83	224.43	206.57	336.83	266.44	291.33
Mar-20	303.57	279.46	349.3	229.35	340.8	382.19	265.91	172.83	231.42	206.57	344.58	277.43	298.95
Apr-20	317.98	284.66	354.54	221.18	347.49	384.89	262.71	172.84	233.56	206.57	349.09	280.92	305.28
May-20	316.02	286.87	358.67	223.69	349.37	389.01	263.61	174.33	233.85	206.57	357.22	284.91	306.07
Jun-20	320.11	291.3	364.95	223.57	355.04	369.92	273.12	176.07	235.21	206.57	361.83	289.13	306.97
Jul-20	327.56	291.48	370.96	223.59	358.21	371.11	276.48	174.35	238.89	206.57	362.60	282.20	310.84
Aug-20	336.69	291.16	377.52	223.35	361.94	378.06	275.26	178.66	239.92	206.57	359.63	288.8	316.56
Sept-20	339.82	287.7	379.9	226.13	365.98	377.54	273.04	175.55	240.98	206.57	346.71	289.35	318.22
Oct-20	325.55	283.86	394.65	221.04	366.29	376.82	269.11	174.19	240.00	206.57	345.1	292.41	312.22
Nov-20	321.94	279.62	391.07	218.08	364.97	380.22	268.45	174.71	235.21	206.57	334.78	286.74	309.82
Dec-20	322.98	296.29	391.52	220.66	370.75	369.95	272.42	180.61	233.02	225.26	334.55	280.34	310.58
Jan-21	339.82	295.96	389.12	222.35	368.9	373.19	270.93	181.26	233.59	225.26	334.71	282.66	318.27
Feb-21	348.63	297.98	385.42	233.09	379.88	360.91	281.87	181.7	234.8	225.26	342.3	286.93	323.01
Mar-21	350.46	307.34	379.79	236.04	380.5	375.08	282.42	178.44	234.79	225.26	340.47	286.5	325.72
Apr-21	367.72	323.95	391.95	237.53	384.85	372.23	283.75	178.44	235.8	225.26	347.52	284.58	334.60
May-21	371.51	321.94	381.95	238.11	386.2	374.83	281.71	178.44	237.05	225.26	366.66	286.37	336.08
Jun-21	374.91	326.78	386.54	242.28	394.52	370.73	283.15	178.43	238.84	226.47	367.94	279.34	338.28
Jul-21	378.02	348.37	392.67	243.15	414.87	374.34	306.49	178.46	242.27	226.47	372.44	285.39	343.47
Aug-21	386.8	361.65	399.51	249.52	414.23	380.56	330.59	178.49	245.62	226.47	373.87	287.07	350.99