

CONSUMER PRICE INDEX OCTOBER 2021 PRESS RELEASE

Released: 22nd November, 2021 @ 12: 00 noon

Contact Persons:

Mwaluma Andrew Bryma GEGBE, MA, MSc

Director of National Accounts and Economic Statistics Division
Statistics Sierra Leone

Mobile: +23279442430/ +23288000898

Email: mwaluma.gegbe@statistics.sl

Skype: mwaluma.gegbe

Isata M. ALLIEU-KEIKURA, MSc

Principal Statistician and Head, Price & Labour Statistics Section
National Accounts and Economic Statistics Division
Statistics Sierra Leone

Mobile: +23276580842

Email: isata.allieu-keikura@statistics.sl

Reviewed by

Andrew Bob JOHNNY, MSc

Deputy Statistician General
Statistics Sierra Leone

Email: andrew.johnny@statistics.sl

Approved for release by:

Prof. Osman SANKOH, DSc, COR

Statistician General & CEO
Statistics Sierra Leone

Email: osman.sankoh@statistics.sl

22nd November, 2021

CONTENTS

| | |
|---|---|
| CONTENTS | 1 |
| KEY FINDINGS..... | 2 |
| HEADLINE NATIONAL INFLATION RATES | 2 |
| ANNUAL (YEAR-ON-YEAR) CONSUMER PRICE INFLATION: DETAILED BY MAIN COICOP HEADINGS .. | 2 |
| MONTHLY CONSUMER PRICE INFLATION: DETAILED BY MAIN COICOP HEADINGS..... | 3 |
| OCTOBER 2021 CONSUMER PRICE INDEX (CPI): DETAILED BY REGIONS..... | 4 |
| SELECTED INFLATION RATE AND CPI BY MAIN COICOP HEADING..... | 5 |
| FOOD AND NON-FOOD COMPONENTS..... | 5 |

LIST OF TABLES

| | |
|--|---|
| Table 1: National & Regional Year-on-Year and Monthly Inflation rates | 4 |
| Table 1.1: National CPI and rates of inflation by main COICOP functions (2008=100) | 5 |
| Table 1.2: 2021 Food and Non-food inflation rates | 6 |
| Table 2: Year-on-Year and Monthly Inflation Rates | 6 |
| Table 3: National Consumer Price Index by Main COICOP Groups (2008=100)..... | 8 |

LIST OF FIGURES

| | |
|--|---|
| Figure 1a: Year-on-Year Percentage Changes in the CPI..... | 1 |
| Figure 1b: Monthly Percentage Changes in the CPI..... | 1 |

KEY FINDINGS

HEADLINE NATIONAL INFLATION RATES

Annual National Consumer Price Inflation (year-on-year) for October 2021 stood at 14.55 percent, up by 2.92 percentage points from 11.63 percent in September 2021.

The monthly consumer price inflation for October 2021 is 0.69 percent; down by 0.52 percentage point from 1.21 percent in September, 2021.

ANNUAL (YEAR-ON-YEAR) CONSUMER PRICE INFLATION: DETAILED BY MAIN COICOP¹ HEADINGS

Upward movers

- ✓ Food and non-alcoholic beverages, with weight 41.86 percent, **increased** from 13.28 percent in September 2021 to 18.17 percent in October 2021. The inflation rate increased by 4.89 percentage points year-on-year.
- ✓ Alcoholic beverages, tobacco and narcotics, with weight 1.71 percent, **increased** from 28.18 percent in September 2021 to 29.64 percent in October 2021. The inflation rate increased by 1.46 percentage points year-on-year.
- ✓ Housing, water, electricity, gas and other fuels, with weight 13.70 percent, **increased** from 11.77 percent in September 2021 to 14.16 percent in October 2021. The inflation rate increased by 2.39 percentage points year-on-year.
- ✓ Furniture, household equipment and household maintenance, with weight 5.86 percent, **increased** from 16.91 percent in September 2021 to 17.60 percent in October 2021. The inflation rate increased by 0.69 percentage point year-on-year.
- ✓ Health, with weight 11.36 percent, **increased** from 3.84 percent in September 2021 to 4.31 percent in October 2021. The inflation rate increased by 0.47 percentage point year-on-year.
- ✓ Transport, with weight 7.75 percent, **increased** from 20.87 percent in September 2021 to 22.30 percent in October 2021. The inflation rate increased by 1.43 percentage points year-on-year.
- ✓ Communication, with weight 2.04 percent, **increased** from 1.67 percent in September 2021 to 2.47 percent in October 2021. The inflation rate increased by 0.80 percentage point year-on-year.
- ✓ Recreation and culture, with weight 1.47 percent, **increased** from 6.29 percent in September 2021 to 11.65 percent in October 2021. The inflation rate increased by 5.36 percentage points year-on-year
- ✓ Education services, with weight 2.88 percent, **increased** from 30.82 percent in September 2021 to 45.25 percent in October 2021. The inflation rate increased by 14.43 percentage points year-on-year
- ✓ Restaurant and hotels, with weight 0.92 percent, **increased** from 17.11 percent in September 2021 to 18.61 percent in October 2021. The inflation rate increased by 1.50 percentage point year-on-year
- ✓ Miscellaneous goods and services, with weight 3.11 percent, **increased** from 4.78 percent in September 2021 to 5.72 percent in October 2021. The inflation rate increased by 0.94 percentage point year-on-year

Downward movers

- ✓ Clothing and footwear, with weight 7.34 percent, **declined** by 0.48 percentage point from 4.96 percent in September 2021 to 4.48 percent in October 2021.

¹ Classification of Individual Consumption by Purpose

MONTHLY CONSUMER PRICE INFLATION: DETAILED BY MAIN COICOP² HEADINGS

Upward movers

- ✓ Food and non-alcoholic beverages, with weight 41.86 percent, **increased** from -0.48 percent in September 2021 to -0.06 percent in October 2021. The inflation rate increased by 0.42 percentage point year-on-year.
- ✓ Clothing and footwear, with weight 7.34 percent, **increased** from -0.20 percent in September 2021 to 3.41 percent in October 2021. The inflation rate increased by 3.61 percentage points year-on-year.
- ✓ Communication, with weight 2.04 percent, **increased** from 0.00 percent in September 2021 to 0.01 percent in October 2021. The inflation rate increased by 0.01 percentage point year-on-year.
- ✓ Recreation and culture, with weight 1.47 percent, **increased** from 4.28 percent in September 2021 to 4.61 percent in October 2021. The inflation rate increased by 0.33 percentage point year-on-year.

Downward movers

- ✓ Alcoholic beverages, tobacco and narcotics, with weight 1.71 percent, **declined** by 2.18 percentage points from 1.97 percent in September 2021 to -0.21 percent in October 2021.
- ✓ Housing, water, electricity, gas and other fuels, with weight 13.70 percent, **declined** by 1.45 percentage point from 1.29 percent in September 2021 to -0.16 percent in October 2021.
- ✓ Furniture, household equipment and household maintenance, with weight 5.86 percent, **declined** by 2.61 percentage points from 3.29 percent in September 2021 to 0.68 percent in October 2021.
- ✓ Health, with weight 11.36 percent, **declined** by 2.74 percentage points from 3.01 percent in September 2021 to 0.27 percent in October 2021.
- ✓ Transport, with weight 7.75 percent **declined** by 0.10 percentage point from -0.17 percent in September 2021 to -0.27 percent in October 2021.
- ✓ Education services, with weight 2.88 percent **declined** by 8.30 percentage points from 19.33 percent in September 2021 to 11.03 percent in October 2021.
- ✓ Restaurant and hotels, with weight 0.92 percent, **declined** by 7.79 percentage points from 8.60 percent in September 2021 to 0.81 percent in October 2021.
- ✓ Miscellaneous goods and services, with weight 3.11 percent **declined** by 3.66 percentage points from 5.62 percent in September 2021 to 1.96 percent in October 2021.

² Classification of Individual Consumption by Purpose

OCTOBER 2021 CONSUMER PRICE INDEX (CPI): DETAILED BY REGIONS

The National Monthly CPI (2008=100) increased from 355.22 in September 2021 to 357.66 in October 2021, resulting to 0.69 percent inflation this month. The national year-on-year inflation for October 2021 stood at 14.55 percent, indicating an upwards trend compared to 11.63 percent in September 2021.

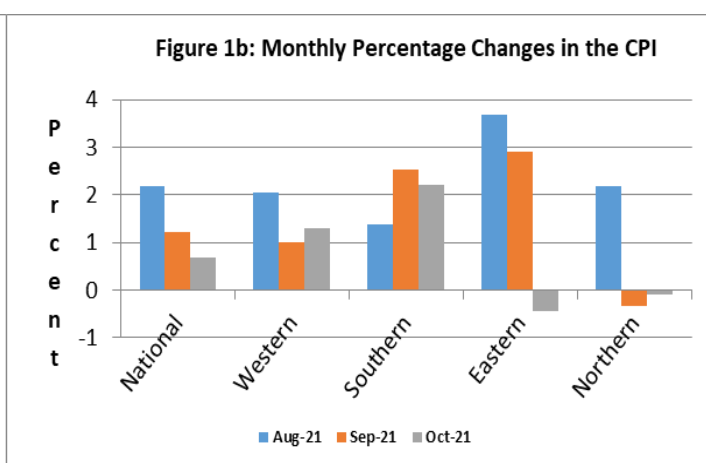
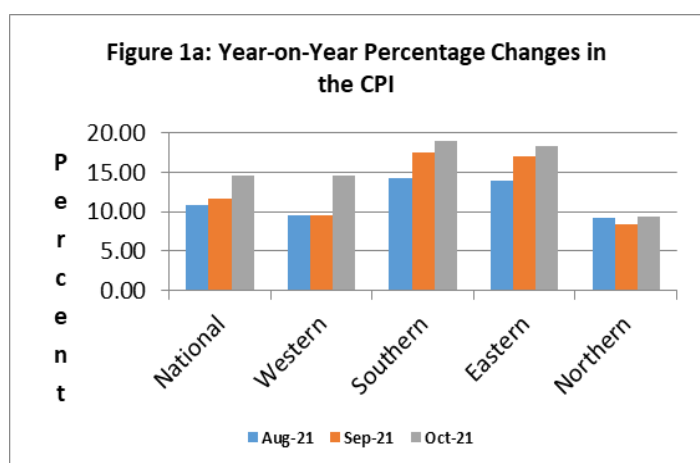
All the four regions show an upward movement: Eastern region from 17.04 percent in September 2021 to 18.27 percent in October 2021, Southern region from 17.55 percent in September to 19.04 percent in October 2021, Western region from 9.55 percent in September 2021 to 14.55 in September 2021 and Northern region from 8.34 percent in September 2021 to 9.43 percent in October 2021.

Table 1: National and Regional Year-on-Year and Monthly Inflation rates

| 2008=100 | | | | | | | | | | |
|------------|--------------|---------|--------------|---------|----------------|---------|-----------------|---------|-----------------|---------|
| Month | National | | Western Area | | Eastern Region | | Southern Region | | Northern Region | |
| | Year-on-Year | Monthly | Year-on-Year | Monthly | Year-on-Year | Monthly | Year-on-Year | Monthly | Year-on-Year | Monthly |
| Sept, 2021 | 11.63 | 1.21 | 9.55 | 1.00 | 17.04 | 2.90 | 17.55 | 2.54 | 8.34 | -0.34 |
| Oct, 2021 | 14.55 | 0.69 | 14.55 | 1.31 | 18.27 | -0.43 | 19.04 | 2.22 | 9.43 | -0.88 |

It is observed from the table above that the year-on-year inflation rates for the Southern and Eastern regions are above the national estimate for the month of October, 2021; Western region estimate is at par, while Northern is below.

Figures 1a and 1b below illustrate the last three months' estimates of the year-on-year inflation and monthly inflation respectively at National and Regional levels.



SELECTED INFLATION RATES AND CPI BY MAIN COICOP HEADING

Table 1.1 below shows the National CPI of the months of October 2020 and October, 2021; as well as the 12 months change in the CPI for the main COICOP functions.

Table 1.1: National CPI and Rates of inflation by main COICOP functions (2008=100)

| COICOP | WEIGHT | Oct-20 | Jul-21 | Aug-21 | Sep-21 | Oct-21 | Monthly Inflation | 3 Months Change Inflation | 12 Months Inflation |
|--|------------|----------------------|----------------------------|----------------------------|--------------------------|--------------------------|-------------------|---------------------------|---------------------|
| | | Month Previous Year- | Month m-2 for Current Year | Month m-1 for Current Year | Month m for Current Year | Month m for Current Year | | | |
| Food and Non-Alcoholic Beverages | 41.86 | 325.55 | 378.02 | 386.80 | 384.95 | 384.71 | -0.06 | 1.77 | 18.17 |
| Alcoholic Beverages, Tobacco and Narcotics | 1.71 | 283.86 | 348.37 | 361.65 | 368.78 | 368.01 | -0.21 | 5.64 | 29.64 |
| Clothing and Footwear | 7.34 | 394.65 | 392.67 | 399.51 | 398.73 | 412.32 | 3.41 | 5.00 | 4.48 |
| Housing, Water, Electricity, Gas and Other Fuels | 13.70 | 221.04 | 243.15 | 249.52 | 252.75 | 252.35 | -0.16 | 3.78 | 14.16 |
| Furniture, Household Equipment and Household Maintenance | 5.86 | 366.29 | 414.87 | 414.23 | 427.85 | 430.74 | 0.68 | 3.83 | 17.60 |
| Health | 11.36 | 376.82 | 374.34 | 380.56 | 392.03 | 393.07 | 0.27 | 5.00 | 4.31 |
| Transport | 7.75 | 269.11 | 306.49 | 330.59 | 330.03 | 329.13 | -0.27 | 7.39 | 22.30 |
| Communication | 2.04 | 174.19 | 178.46 | 178.49 | 178.49 | 178.50 | 0.01 | 0.02 | 2.47 |
| Recreation and Culture | 1.47 | 240.00 | 242.27 | 245.62 | 256.14 | 267.95 | 4.61 | 10.6 | 11.65 |
| Education | 2.88 | 206.57 | 226.47 | 226.47 | 270.24 | 300.05 | 11.03 | 32.49 | 45.25 |
| Restaurant and Hotels | 0.92 | 345.10 | 372.44 | 373.87 | 406.04 | 409.33 | 0.81 | 9.90 | 18.61 |
| Miscellaneous Goods & Services | 3.11 | 292.41 | 285.39 | 287.07 | 303.19 | 309.13 | 1.96 | 8.32 | 5.72 |
| All Items | 100 | 312.22 | 343.47 | 350.99 | 355.22 | 357.66 | 0.69 | 4.13 | 14.55 |

FOOD³ AND NON-FOOD⁴ COMPONENTS

On a whole, food items inflation increased by 4.89 percentage points from 13.28 percent in September 2021 to 18.17 percent in October 2021. Selected key upward movers in the food-items basket are: imported broken rice by 5 percent, imported long grain rice by 18 percent, yellow maize by 7 percent, cow tripes by 8 percent, luncheon meat by 11 percent; shine nose fish by 9 percent; vegetable oil by 5 percent, yellow plantain by 9 percent, sweet potato leaves by 13 percent, eggplant by 16 percent, cucumber by 10 percent, broad bean by 9 percent, benniseed by 12 percent and Ovaltine by 7 percent.

The non-food items inflation increased by 1.38 percentage point from 10.21 in September 2021 to 11.59 percent in October 2021. In the non-food category ten divisions went up and only one went down. Noticeable increases were recorded in Education by 14.43 percentage points; Recreation and Culture by 5.36 percentage points and Housing, Water, Electricity, Gas and Other Fuels by 2.39 percentage points.

NOTE: The National CPI measures the change in prices, on average, from month to month, of the goods and services bought by households, in Freetown, Bo, Kenema, Kono and Makeni and include all expenditure groups. Prices are collected for at least 436 items. All prices collected are the prevailing retail market prices from six (6) markets in Freetown and, three (3) Markets each in Bo, Kenema, Makeni and Kono for weekly prices and other outlets for monthly items whose prices are less likely to fluctuate rapidly. We are using the

³ Food and Non-Alcoholic Beverages

⁴ All other main COICOP Functions excluding Food and Non-Alcoholic Beverages

Modified Laspeyres formula to compute indices according to the Classification of Individual Consumption by Purpose (COICOP) with 12 functions.

Table 1.2: 2021 Food and Non-food inflation rates

| Items | Jan | Feb | Mar | April | May | June | July | Aug | Sept | Oct | Nov | Dec |
|----------------------------------|-------|-------|-------|-------|-------|-------|-------|-------|-------|-------|-----|-----|
| Food and Non-alcoholic Beverages | 18.88 | 19.59 | 15.45 | 15.64 | 17.56 | 17.12 | 15.40 | 14.88 | 13.28 | 18.17 | | |
| Non-food | 5.87 | 4.24 | 3.88 | 4.67 | 3.57 | 4.53 | 6.40 | 7.48 | 10.21 | 11.59 | | |

Table 2: Year-on-Year and Monthly Inflation Rates

| | National CPI (2008=100) | | | Western Area/Freetown CPI (2008=100) | | |
|----------------|-------------------------|-----------------------|----------------|--------------------------------------|-----------------------|----------------|
| | CPI | Year-on-Year % Change | Monthly Change | CPI | Year-on-Year % Change | Monthly Change |
| 2017 | | | | | | |
| January | 191.59 | 18.66 | 2.24 | 197.56 | 18.64 | 2.58 |
| February | 194.63 | 19.82 | 1.59 | 200.70 | 19.72 | 1.59 |
| March | 196.15 | 20.22 | 0.78 | 202.36 | 20.16 | 0.83 |
| April | 197.66 | 19.80 | 0.77 | 204.09 | 19.81 | 0.85 |
| May | 198.72 | 18.91 | 0.54 | 204.49 | 18.09 | 0.20 |
| June | 200.85 | 19.14 | 1.07 | 206.40 | 18.07 | 0.93 |
| July | 202.87 | 18.56 | 1.01 | 207.94 | 18.33 | 0.75 |
| August | 204.75 | 18.01 | 0.93 | 209.55 | 17.17 | 0.77 |
| September | 206.35 | 17.83 | 0.78 | 211.50 | 17.56 | 0.93 |
| October | 207.88 | 16.86 | 0.74 | 212.93 | 16.30 | 0.67 |
| November | 212.46 | 16.26 | 2.20 | 217.34 | 16.45 | 2.07 |
| December | 216.11 | 15.33 | 1.72 | 220.98 | 14.74 | 1.67 |
| Average | 202.50 | 18.28 | 1.20 | 207.99 | 17.92 | 1.15 |
| 2018 | | | | | | |
| January | 219.73 | 14.69 | 1.68 | 223.74 | 13.25 | 1.25 |
| February | 222.65 | 14.40 | 1.33 | 226.02 | 12.62 | 1.02 |
| March | 225.40 | 14.91 | 1.24 | 228.17 | 12.76 | 0.95 |
| April | 227.58 | 15.14 | 0.97 | 229.58 | 12.49 | 0.62 |
| May | 230.55 | 16.02 | 1.31 | 232.64 | 13.77 | 1.34 |
| June | 234.13 | 16.57 | 1.55 | 235.92 | 14.31 | 1.41 |
| July | 238.79 | 17.71 | 1.99 | 241.88 | 16.32 | 2.52 |
| August | 242.00 | 18.19 | 1.34 | 246.79 | 17.77 | 2.03 |
| September | 243.00 | 17.77 | 0.43 | 245.62 | 16.13 | -0.47 |
| October | 241.30 | 16.06 | -0.72 | 242.86 | 14.06 | -1.12 |
| November | 247.60 | 16.55 | 2.64 | 250.50 | 15.25 | 3.14 |
| December | 246.90 | 14.25 | -0.29 | 247.61 | 12.05 | -1.15 |
| Average | 234.97 | 16.02 | 1.12 | 237.61 | 14.23 | 0.96 |

More information can also be obtained from our website: www.statistics.sl

For more detailed Information: Subscribe to the Detailed CPI Report. Please Contact:
The Statistician General, Statistics Sierra Leone, P. O. Box 595, Tower Hill, Freetown, SIERRA LEONE
E-mail: statistics@statistics.sl or info@statistics.sl

Table 2: (Cont'd)

| | National CPI (2008=100) | | | Western Area/Freetown CPI (2008=100) | | |
|----------------|-------------------------|---------------------------|-------------------|--------------------------------------|---------------------------|-------------------|
| | CPI | Year-on- Year % Change | Monthly Change | CPI | Year-on –Year % Change | Monthly Change |
| 2019 | | | | | | |
| January | 251.27 | 14.35 | 1.77 | 249.40 | 11.47 | 0.72 |
| February | 254.01 | 14.08 | 1.09 | 257.62 | 13.98 | 3.30 |
| March | 258.69 | 14.77 | 1.84 | 262.29 | 14.95 | 1.81 |
| April | 265.27 | 16.56 | 2.54 | 267.74 | 16.62 | 2.08 |
| May | 265.07 | 14.97 | -0.08 | 266.18 | 14.41 | -0.58 |
| June | 268.42 | 14.65 | 1.26 | 269.19 | 14.10 | 1.13 |
| July | 274.35 | 14.89 | 2.21 | 271.38 | 12.20 | 0.81 |
| August | 279.34 | 15.43 | 1.82 | 279.90 | 13.41 | 3.14 |
| September | 279.86 | 15.16 | 0.19 | 276.56 | 12.59 | -1.19 |
| October | 279.49 | 15.85 | -0.13 | 281.63 | 15.96 | 1.83 |
| November | 280.04 | 13.09 | 0.20 | 289.71 | 15.66 | 2.87 |
| December | 281.20 | 13.89 | 0.41 | 294.07 | 18.76 | 1.50 |
| Average | 269.75 | 14.81 | 1.09 | 272.14 | 14.51 | 1.45 |
| 2020 | | | | | | |
| January | 285.45 | 13.60 | 1.51 | 299.50 | 20.09 | 1.84 |
| February | 291.33 | 14.69 | 2.06 | 306.04 | 18.79 | 2.18 |
| March | 298.95 | 15.56 | 2.62 | 310.61 | 18.42 | 1.49 |
| April | 305.28 | 15.08 | 2.12 | 315.76 | 17.94 | 1.66 |
| May | 306.07 | 15.47 | 0.26 | 319.41 | 20.00 | 1.15 |
| Jun | 306.97 | 14.36 | 0.29 | 315.75 | 17.29 | -1.15 |
| Jul | 310.84 | 13.30 | 1.26 | 321.21 | 18.36 | 1.73 |
| Aug | 316.56 | 13.32 | 1.84 | 325.23 | 16.20 | 1.25 |
| Sept | 318.22 | 13.71 | 0.52 | 328.56 | 18.81 | 1.02 |
| Oct | 312.22 | 11.71 | -1.89 | 318.35 | 13.04 | -3.11 |
| Nov | 309.82 | 10.63 | -0.77 | 317.68 | 9.65 | -0.21 |
| Dec | 310.58 | 10.45 | 0.25 | 320.01 | 8.82 | 0.73 |
| Average | 306.02 | 13.49 | 0.84 | 316.51 | 16.45 | 0.72 |
| 2021 | | | | | | |
| January | 318.27 | 11.50 | 2.48 | 327.32 | 9.29 | 2.28 |
| February | 323.01 | 10.87 | 1.49 | 329.15 | 7.55 | 0.56 |
| March | 325.72 | 8.95 | 0.84 | 335.15 | 7.90 | 1.82 |
| April | 334.60 | 9.60 | 2.73 | 341.38 | 8.11 | 1.86 |
| May | 336.08 | 9.80 | 0.44 | 344.07 | 7.72 | 0.79 |
| Jun | 338.28 | 10.20 | 0.65 | 347.85 | 10.17 | 1.10 |
| Jul | 343.47 | 10.50 | 1.53 | 349.26 | 8.73 | 0.40 |
| Aug | 350.99 | 10.88 | 2.19 | 356.38 | 9.58 | 2.04 |
| Sept | 355.22 | 11.63 | 1.21 | 359.94 | 9.55 | 1.00 |
| Oct | 357.66 | 14.55 | 0.69 | 364.67 | 14.55 | 1.31 |

Table 3: National Consumer Price Index by Main COICOP Groups (2008=100)

| | Food and Non-Alcoholic Beverages | Alcoholic Beverages, Tobacco and Narcotics | Clothing and Footwear | Housing, Water, Electricity, Gas and Other Fuels | Furniture, Household Equipment and Household Maintenance | Health | Transport | Communication | Recreation and Culture | Education | Restaurant and Hotels | Miscellaneous Goods and Services | All Items |
|---------|----------------------------------|--|-----------------------|--|--|--------|-----------|---------------|------------------------|-----------|-----------------------|----------------------------------|-----------|
| Weight | 41.86 | 1.71 | 7.34 | 13.7 | 5.86 | 11.36 | 7.75 | 2.04 | 1.47 | 2.88 | 0.92 | 3.13 | 100 |
| Jan-17 | 204.76 | 181.11 | 216.4 | 165.98 | 215.6 | 183.42 | 173.05 | 148.89 | 180.22 | 136.84 | 182.64 | 187.32 | 191.59 |
| Feb-17 | 208.42 | 186.2 | 221.43 | 167.42 | 221.35 | 185.87 | 173.85 | 150.43 | 180.65 | 136.91 | 182.74 | 190.46 | 194.63 |
| Mar-17 | 210.81 | 190.78 | 221.69 | 167.97 | 222.42 | 186.13 | 176.25 | 150.52 | 181.21 | 137.08 | 184.93 | 191.65 | 196.15 |
| Apr-17 | 211.73 | 192.07 | 224.05 | 168.43 | 226.5 | 188.8 | 180.03 | 153.23 | 181.88 | 137.21 | 186.93 | 193.3 | 197.66 |
| May-17 | 212.33 | 193.55 | 227.95 | 168.96 | 226.53 | 189.34 | 183.8 | 154.16 | 182.71 | 137.22 | 189.74 | 195.38 | 198.72 |
| Jun-17 | 214.56 | 195.64 | 233.71 | 169.47 | 230.04 | 191.33 | 184.16 | 156.1 | 185.35 | 137.51 | 190.92 | 197.51 | 200.85 |
| Jul-17 | 217.85 | 197.43 | 234.78 | 169.8 | 231.65 | 193 | 184.7 | 156.96 | 185.8 | 137.65 | 192.15 | 199.62 | 202.87 |
| Aug-17 | 220.49 | 202.41 | 235.42 | 170.01 | 234.36 | 194.21 | 185.1 | 157.52 | 186.46 | 138.55 | 195.97 | 203.91 | 204.75 |
| Sept-17 | 221.96 | 204.02 | 237.81 | 170.27 | 237.6 | 196.62 | 186.54 | 160.62 | 187.72 | 138.85 | 199.6 | 205.61 | 206.35 |
| Oct-17 | 223.88 | 206.03 | 239.05 | 170.71 | 240.1 | 197.87 | 187.36 | 161.93 | 190.35 | 139.17 | 203.05 | 207.79 | 207.88 |
| Nov-17 | 231.59 | 209.96 | 242.24 | 172.65 | 242.46 | 199.36 | 187.63 | 163.72 | 193.65 | 141.25 | 205.38 | 212.08 | 212.46 |
| Dec-17 | 236.14 | 215.57 | 248.21 | 174.79 | 246.89 | 201.37 | 188.95 | 164.78 | 196.29 | 143.49 | 211.1 | 214.87 | 216.11 |
| Jan-18 | 240.61 | 218.27 | 251.93 | 176.68 | 249.13 | 205.92 | 190.98 | 165.94 | 198.83 | 147.19 | 214.47 | 217.67 | 219.73 |
| Feb-18 | 243.6 | 222.52 | 254.76 | 178.69 | 254.02 | 209.47 | 191.54 | 170.77 | 201.11 | 148.5 | 220.16 | 220.6 | 222.65 |
| Mar-18 | 246.07 | 226.68 | 257.38 | 180.06 | 260.28 | 213.6 | 192.93 | 171.25 | 205.24 | 150.83 | 225.93 | 224.25 | 225.4 |
| Apr-18 | 248.17 | 229.31 | 258.64 | 181.16 | 262.12 | 217.72 | 193.83 | 172.23 | 207.54 | 152.61 | 230.49 | 228.49 | 227.58 |
| May-18 | 252.09 | 232.24 | 262.07 | 183.59 | 263.81 | 219.84 | 195.17 | 172.8 | 209.48 | 153.13 | 234.05 | 231.32 | 230.55 |
| Jun-18 | 256.72 | 236.77 | 265.64 | 185.6 | 268.26 | 223.15 | 196.28 | 173.87 | 211.05 | 154.68 | 238.77 | 234.5 | 234.13 |
| Jul-18 | 259.39 | 240.41 | 267.99 | 197.69 | 274.18 | 226.57 | 211.78 | 175.02 | 212.51 | 155.74 | 244.95 | 235.47 | 238.79 |
| Aug-18 | 264.13 | 243.64 | 274.6 | 202.29 | 289.45 | 224.45 | 215.98 | 144.21 | 212.73 | 157.46 | 254.01 | 231.41 | 241.99 |
| Sep-18 | 266.47 | 249.53 | 275.38 | 203.96 | 283.93 | 226.97 | 219.94 | 146.47 | 219.42 | 119.82 | 251.8 | 240.5 | 243.02 |
| Oct-18 | 262.55 | 241.85 | 278.15 | 201.81 | 285.75 | 228.72 | 220.56 | 147.15 | 217.34 | 119.82 | 270.9 | 232.25 | 241.26 |
| Nov-18 | 270.26 | 256.4 | 286.95 | 207.29 | 290.83 | 232.6 | 223.78 | 148.09 | 222.5 | 120.55 | 258.64 | 243.09 | 247.62 |
| Dec-18 | 266.29 | 250.55 | 283.81 | 208.13 | 284.5 | 246.04 | 229.18 | 144.51 | 215.92 | 120.55 | 289.65 | 227.76 | 246.9 |
| Jan-19 | 266.00 | 260.05 | 311.87 | 209.80 | 294.04 | 253.14 | 227.03 | 145.37 | 224.03 | 120.97 | 279.86 | 244.01 | 251.27 |
| Feb-19 | 269.18 | 264.64 | 309.94 | 209.37 | 309.97 | 253.94 | 225.81 | 160.61 | 240.73 | 121.66 | 280.52 | 248.62 | 254.01 |
| Mar-19 | 276.29 | 267.26 | 316.58 | 212.03 | 314.69 | 257.44 | 226.29 | 159.17 | 231.29 | 122.27 | 286.81 | 250.51 | 258.69 |
| Apr-19 | 287.67 | 280.13 | 321.05 | 216.88 | 322.77 | 252.71 | 230.26 | 159.29 | 236.17 | 123.45 | 284.89 | 259.34 | 265.27 |
| May-19 | 271.03 | 274.68 | 331.20 | 211.64 | 348.38 | 291.15 | 235.67 | 176.63 | 227.26 | 134.65 | 279.30 | 267.67 | 265.07 |
| Jun-19 | 273.74 | 275.25 | 338.34 | 211.26 | 359.29 | 303.77 | 237.49 | 178.37 | 222.02 | 122.47 | 281.26 | 265.58 | 268.42 |
| Jul-19 | 279.31 | 281.22 | 345.66 | 217.16 | 362.95 | 311.80 | 250.00 | 165.16 | 224.49 | 122.47 | 294.50 | 274.17 | 274.35 |
| Aug-19 | 286.00 | 286.45 | 334.19 | 217.52 | 351.19 | 345.08 | 244.26 | 171.13 | 219.31 | 122.47 | 292.64 | 258.01 | 279.34 |
| Sept-19 | 288.59 | 281.58 | 334.92 | 218.53 | 356.37 | 331.87 | 250.41 | 155.92 | 218.37 | 122.47 | 328.86 | 267.89 | 279.86 |
| Oct-19 | 286.36 | 280.77 | 333.75 | 221.95 | 358.16 | 333.1 | 250.5 | 155.92 | 217.99 | 122.47 | 327.57 | 268.52 | 279.49 |
| Nov-19 | 280.04 | 269.2 | 333.1 | 226.15 | 344.01 | 343.26 | 249.99 | 155.92 | 223.13 | 206.57 | 318.96 | 263.91 | 280.04 |
| Dec-19 | 280.62 | 279.46 | 328.60 | 229.75 | 347.76 | 344.33 | 255.46 | 155.90 | 222.51 | 206.57 | 318.99 | 263.45 | 281.20 |

Table 3: (Cont'd)

| | Food and Non-Alcoholic Beverages | Alcoholic Beverages, Tobacco and Narcotics | Clothing and Footwear | Housing, Water, Electricity, Gas and Other Fuels | Furniture, Household Equipment and Household Maintenance | Health | Transport | Communication | Recreation and Culture | Education | Restaurant and Hotels | Miscellaneous Goods and Services | All Items |
|---------|----------------------------------|--|-----------------------|--|--|--------|-----------|---------------|------------------------|-----------|-----------------------|----------------------------------|-----------|
| Jan-20 | 285.84 | 288.03 | 337.24 | 231.49 | 347.52 | 342.89 | 267.38 | 155.87 | 223.65 | 206.57 | 339.5 | 270.3 | 285.45 |
| Feb-20 | 291.53 | 275.23 | 341.22 | 233.51 | 335.71 | 371.28 | 268.79 | 163.83 | 224.43 | 206.57 | 336.83 | 266.44 | 291.33 |
| Mar-20 | 303.57 | 279.46 | 349.3 | 229.35 | 340.8 | 382.19 | 265.91 | 172.83 | 231.42 | 206.57 | 344.58 | 277.43 | 298.95 |
| Apr-20 | 317.98 | 284.66 | 354.54 | 221.18 | 347.49 | 384.89 | 262.71 | 172.84 | 233.56 | 206.57 | 349.09 | 280.92 | 305.28 |
| May-20 | 316.02 | 286.87 | 358.67 | 223.69 | 349.37 | 389.01 | 263.61 | 174.33 | 233.85 | 206.57 | 357.22 | 284.91 | 306.07 |
| Jun-20 | 320.11 | 291.3 | 364.95 | 223.57 | 355.04 | 369.92 | 273.12 | 176.07 | 235.21 | 206.57 | 361.83 | 289.13 | 306.97 |
| Jul-20 | 327.56 | 291.48 | 370.96 | 223.59 | 358.21 | 371.11 | 276.48 | 174.35 | 238.89 | 206.57 | 362.60 | 282.20 | 310.84 |
| Aug-20 | 336.69 | 291.16 | 377.52 | 223.35 | 361.94 | 378.06 | 275.26 | 178.66 | 239.92 | 206.57 | 359.63 | 288.8 | 316.56 |
| Sept-20 | 339.82 | 287.7 | 379.9 | 226.13 | 365.98 | 377.54 | 273.04 | 175.55 | 240.98 | 206.57 | 346.71 | 289.35 | 318.22 |
| Oct-20 | 325.55 | 283.86 | 394.65 | 221.04 | 366.29 | 376.82 | 269.11 | 174.19 | 240.00 | 206.57 | 345.1 | 292.41 | 312.22 |
| Nov-20 | 321.94 | 279.62 | 391.07 | 218.08 | 364.97 | 380.22 | 268.45 | 174.71 | 235.21 | 206.57 | 334.78 | 286.74 | 309.82 |
| Dec-20 | 322.98 | 296.29 | 391.52 | 220.66 | 370.75 | 369.95 | 272.42 | 180.61 | 233.02 | 225.26 | 334.55 | 280.34 | 310.58 |
| Jan-21 | 339.82 | 295.96 | 389.12 | 222.35 | 368.9 | 373.19 | 270.93 | 181.26 | 233.59 | 225.26 | 334.71 | 282.66 | 318.27 |
| Feb-21 | 348.63 | 297.98 | 385.42 | 233.09 | 379.88 | 360.91 | 281.87 | 181.7 | 234.8 | 225.26 | 342.3 | 286.93 | 323.01 |
| Mar-21 | 350.46 | 307.34 | 379.79 | 236.04 | 380.5 | 375.08 | 282.42 | 178.44 | 234.79 | 225.26 | 340.47 | 286.5 | 325.72 |
| Apr-21 | 367.72 | 323.95 | 391.95 | 237.53 | 384.85 | 372.23 | 283.75 | 178.44 | 235.8 | 225.26 | 347.52 | 284.58 | 334.60 |
| May-21 | 371.51 | 321.94 | 381.95 | 238.11 | 386.2 | 374.83 | 281.71 | 178.44 | 237.05 | 225.26 | 366.66 | 286.37 | 336.08 |
| Jun-21 | 374.91 | 326.78 | 386.54 | 242.28 | 394.52 | 370.73 | 283.15 | 178.43 | 238.84 | 226.47 | 367.94 | 279.34 | 338.28 |
| Jul-21 | 378.02 | 348.37 | 392.67 | 243.15 | 414.87 | 374.34 | 306.49 | 178.46 | 242.27 | 226.47 | 372.44 | 285.39 | 343.47 |
| Aug-21 | 386.8 | 361.65 | 399.51 | 249.52 | 414.23 | 380.56 | 330.59 | 178.49 | 245.62 | 226.47 | 373.87 | 287.07 | 350.99 |
| Sept-21 | 384.95 | 368.78 | 398.73 | 252.75 | 427.85 | 392.03 | 330.03 | 178.49 | 256.14 | 270.24 | 406.04 | 303.19 | 355.22 |
| Oct-21 | 384.71 | 368.01 | 412.32 | 252.35 | 430.74 | 393.07 | 329.13 | 178.5 | 267.95 | 300.05 | 409.33 | 309.13 | 357.66 |