



STATISTICS SIERRA LEONE
(Stats SL)

Credible Data for National Development

CONSUMER PRICE INDEX JUNE 2020

PRESS RELEASE

Released: 25th July, 2020 @ 12: 00 noon

Contact Person:

Mwaluma Andrew Bryma GEGBE, MA, MSc

Director of National Accounts and Economic Statistics Division
Statistics Sierra Leone

Mobile: +23279442430/ +23288000898

Email: mwaluma.gegbe@statistics.sl

Skype: mwaluma.gegbe

Isata M. ALLIEU-KEIKURA, MSc

Principal Statistician and Head, Price & Labour Statistics Section
National Accounts and Economic Statistics Division
Statistics Sierra Leone

Mobile: +23276580842

Email: isata.allieu-keikura@statistics.sl

Reviewed by

Andrew Bob JOHNNY, MSc

Deputy Statistician General
Statistics Sierra Leone

Email: andrew.johnny@statistics.sl

Approved for release by:

Prof. Osman SANKOH, DSc

Statistician General & CEO
Statistics Sierra Leone

Email: osman.sankoh@statistics.sl

25th July 2020

CONTENTS

Contents	i
Key Finding.....	ii
Detailed Explanation on the May, 2020 Consumer Price Index (CPI)	1
Figure 1a: Year-on-Year Percentage Changes in the CPI	1
Figure 1b: Monthly Percentage Changes in the CPI	1
Table 1.0: Regional Year-on-Year and Monthly Inflation rates	1
Table 1.1: National CPI and Year-on-Year Rates of Inflation by Main COICOP Groups (2008=100).....	2
Table 1.2: 2020 Monthly Food and Non-food baskets inflation rates.....	3
Table 2.0: Year-on-Year and Monthly Inflation Rates.....	4
Table 3.0: National Consumer Price Index by Main COICOP Groups (2008=100).....	5

More information can also be obtained from our website: www.statistics.sl

For more detailed information: Subscribe to the Detailed CPI Report. Please Contact:
The Statistician General, Statistics Sierra Leone, P. O. Box 595, Tower Hill, Freetown, SIERRA LEONE
E-mail: statistics@statistics.sl or info@statistics.sl

KEY FINDINGS

Headline National Inflation Rate

Annual National Consumer Price Inflation (year-on-year) went down by 1.11 percentage point from 15.47 percent in May 2020 to 14.36 percent in June 2020.

The monthly consumer price inflation for June 2020 is 0.29 percent; up by 0.03 percentage point from 0.26 percent in May, 2020.

Contributions to headline annual (year-on-year) consumer price inflation

- ✓ Food and non-alcoholic beverages increased from 16.60 percent in May 2020 to 16.94 percent in June 2020. The inflation rate increased by 0.34 percentage point year-on-year.
- ✓ Alcoholic beverages, tobacco and narcotics increased from 4.44 percent in May 2020 to 5.83 percent in June 2020. The inflation rate increased by 1.39 percentage point year-on-year.
- ✓ Clothing and footwear declined by 0.43 percentage points from 8.29 percent in May 2020 to 7.86 percent in June 2020.
- ✓ Housing, water, electricity, gas and other fuels increased from 5.69 percent in May 2020 to 5.83 percent in June 2020. The inflation rate increased by 0.14 percentage point year-on-year.
- ✓ Furniture, household equipment and household maintenance declined by 1.46 percentage point from 0.28 percent in May 2020 to -1.18 percent in June 2020
- ✓ Health declined by 11.83 percentage points from 33.61 percent in May 2020 to 21.78 percent in June 2020
- ✓ Transport increased from 11.86 percent in May 2020 to 15.00 percent in June 2020. The inflation rate increased by 3.14 percentage points year-on-year.
- ✓ Communication increased from -1.30 percent in May 2020 to -1.29 percent in June 2020. The inflation rate increased by 0.01 percentage point year-on-year.
- ✓ Recreation and Culture increased from 2.90 percent in May 2020 to 5.94 percent in June 2020. The inflation rate increased by 3.04 percentage points year-on-year.
- ✓ Education increased from 53.41 percent in May 2020 to 68.67 percent in June 2020. The inflation rate increased by 15.26 percentage points year-on-year.
- ✓ Restaurant and hotels increased from 27.90 percent in May 2020 to 28.65 percent in June 2020. The inflation rate increased by 0.75 percentage points year-on-year.
- ✓ Miscellaneous goods and services increased from 6.44 percent in May 2020 to 8.87 percent in June 2020. The inflation rate increased by 2.43 percentage points year-on-year.

More information can also be obtained from our website: www.statistics.sl

For more detailed information: Subscribe to the Detailed CPI Report. Please Contact:
The Statistician General, Statistics Sierra Leone, P. O. Box 595, Tower Hill, Freetown, SIERRA LEONE
E-mail: statistics@statistics.sl or info@statistics.sl

Contributions to monthly consumer price inflation

- ✓ Food and non-alcoholic beverages increased from -0.62 percent in May 2020 to 1.29 percent in June 2020. The inflation rate increased by 1.91 percentage point year-on-year
- ✓ Alcoholic beverages, tobacco and narcotics increased from 0.78 percent in May 2020 to 1.54 percent in June 2020. The inflation rate increased by 0.76 percentage point year-on-year.
- ✓ Clothing and footwear increased from 1.16 percent in May 2020 to 1.75 percent in June 2020. The inflation rate increased by 0.59 percentage point year-on-year.
- ✓ Housing, water, electricity, gas and other fuels declined by 1.18 percentage point from 1.13 percent in May 2020 to -0.05 percent in June 2020.
- ✓ Furniture, household equipment and household maintenance increased from 0.54 percent in May 2020 to 1.62 percent in June 2020. The inflation rate increased by 1.08 percentage point year-on-year.
- ✓ Health declined by 5.98 percentage points from 1.07 percent in May 2020 to -4.91 percent in June 2020.
- ✓ Transport increased from 0.34 percent in May 2020 to 3.61 percent in June 2020. The inflation rate increased by 3.27 percentage points year-on-year
- ✓ Communication increased from 0.86 percent in May 2020 to 1.00 percent in June 2020. The inflation rate increased by 0.14 percentage point year-on-year.
- ✓ Recreation and Culture increased from 0.12 percent in May 2020 to 0.59 percent in June 2020. The inflation rate increased by 0.47 percentage point year-on-year.
- ✓ For Education, no change is noticed between May, 2020 and June, 2020.
- ✓ Restaurants and hotels declined by 1.04 percentage point from 2.33 percent in May 2020 to 1.29 percent in June 2020.
- ✓ Miscellaneous goods and services increased from 1.42 percent in May 2020 to 1.48 percent in June 2020. The inflation rate increased by 0.06 percentage point year-on-year.

More information can also be obtained from our website: www.statistics.sl

For more detailed information: Subscribe to the Detailed CPI Report. Please Contact:
The Statistician General, Statistics Sierra Leone, P. O. Box 595, Tower Hill, Freetown, SIERRA LEONE
E-mail: statistics@statistics.sl or info@statistics.sl

DETAILED EXPLANATION ON THE JUNE, 2020 CONSUMER PRICE INDEX (CPI)

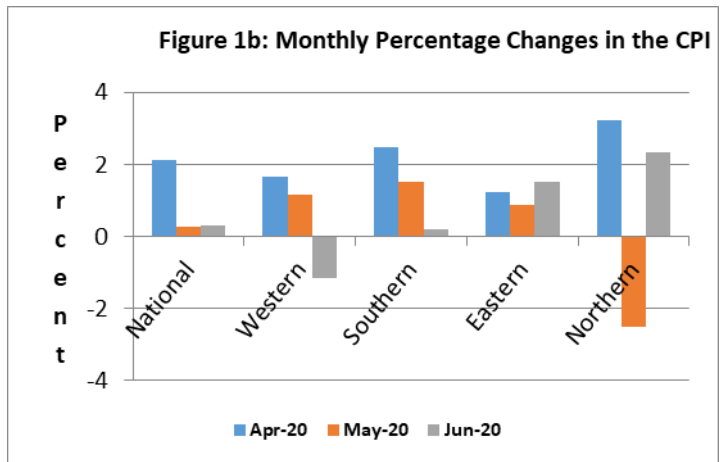
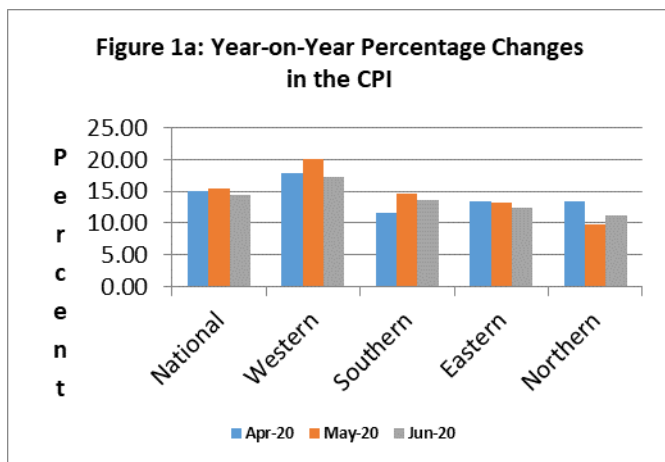
The National Monthly CPI (2008=100) increased from 306.07 in May 2020 to 306.97 in June 2020 resulting to 0.29 percent inflation this month. The national year-on-year inflation for June 2020 is 14.36 percent, which indicates a downward trend compared to 15.47 percent in May 2020. Northern region shows an upward trend from 9.70 percent in May 2020 to 11.12 percent in June 2020. On the other hand, the other three regions declined: Western Area from 20.00 percent in May 2020 to 17.29 percent in June 2020, Southern region from 14.59 percent in May 2020 to 13.54 percent in June 2020 and Eastern region from 13.22 percent in May 2020 to 12.32 percent in June 2020.

Table 1.0 National & Regional Year-on-Year and Monthly Inflation rates

2008=100										
	National		Western Area		Eastern Region		Southern Region		Northern Region	
Month	Year-on-Year	Monthly	Year-on-Year	Monthly	Year-on-Year	Monthly	Year-on-Year	Monthly	Year-on-Year	Monthly
May, 2020	15.47	0.26	20.00	1.15	13.22	0.87	14.59	1.53	9.70	-2.53
Jun, 2020	14.36	0.29	17.29	-1.15	12.32	1.50	13.54	0.18	11.12	2.32

It is observed from the table above that the year-on-year inflation rates for the Western Area is above the national estimate for the month of June, 2020, even-though it declined; while Northern, Southern and Eastern regions are below.

Figures 1a & 1b below illustrate the movement in the year-on-year inflation and monthly inflation respectively for the National CPI and Regional CPI centers, while Table 1.1 below shows the National CPI of the months of May, 2019 and May, 2020; as well as the 12 months change in the CPI for the main COICOP functions.



FACTORS INFLUENCING CHANGES IN THE MONTHLY RATE OF INFLATION

The monthly price inflation of 0.29 percent reflects a general change in the price level in all the four regions which affected all of the items in the CPI basket. In June, Health (-4.91 percent) and Housing, water, electricity, gas and other fuels (-0.05 percent) show average price decline; while other divisions show price increases. However, all price increases are below 2 percent except for Transport division which recorded a 3.61 percent inflation rate.

Table 1.1: National CPI and Year-on-Year Rates of Inflation by Main COICOP Groups (2008=100)

COICOP	WEIGHT	Jun-19	Mar-20	Apr-20	May-20	Jun-20	Monthly Inflation	Change Inflation 3 Months	12 Months Inflation
		Month Previous Year-	Month m-3 for Current Year	Month m-2 for Current Year	Month m-1 for Current Year	Month m for Current Year			
Food and Non-Alcoholic Beverage	41.86	273.74	303.57	317.98	316.02	320.11	1.29	5.45	16.94
Alcoholic Beverages, Tobacco and Narcotics	1.71	275.25	279.46	284.66	286.87	291.30	1.54	4.24	5.83
Clothing and Footwear	7.34	338.34	349.30	354.54	358.67	364.95	1.75	4.48	7.86
Housing, Water, Electricity, Gas and Other Fuels	13.70	211.26	229.35	221.18	223.69	223.57	-0.05	-2.52	5.83
Furniture, Household Equipment and Household Maintenance	5.86	359.29	340.80	347.49	349.37	355.04	1.62	4.18	-1.18
Health	11.36	303.77	382.19	384.89	389.01	369.92	-4.91	-3.21	21.78
Transport	7.75	237.49	265.91	262.71	263.61	273.12	3.61	2.71	15.00
Communication	2.04	178.37	172.83	172.84	174.33	176.07	1.00	1.87	-1.29
Recreation and Culture	1.47	222.02	231.42	233.56	233.84	235.21	0.59	1.64	5.94
Education	2.88	122.47	206.57	206.57	206.57	206.57	0.00	0	68.67
Restaurant and Hotels	0.92	281.26	344.58	349.09	357.22	361.83	1.29	5.01	28.65
Miscellaneous Goods and Services	3.13	265.58	277.43	280.92	284.91	289.13	1.48	4.22	8.87
All Items	100	268.42	298.95	305.28	306.07	306.97	0.29	2.68	14.36

The National CPI measures the change in prices, on average, from month to month, of the goods and services bought by households, in Freetown, Bo, Kenema, Kono and Makeni and include all expenditure groups. Prices are collected for at least 436 items. All prices collected are the prevailing retail market prices from six (6) markets in Freetown and, three (3) Markets each in Bo, Kenema, Makeni and Kono for weekly prices and other outlets for monthly items whose prices are less likely to fluctuate rapidly. We are using the Modified Laspeyres formula to compute indices according to the Classification of Individual Consumption by Purpose (COICOP) with 12 functions.

Food¹ and Non-Food² Components

Food items inflation increased by 0.34 percentage point from 16.60 percent in May 2020 to 16.94 percent in June 2020. Non-food items inflation decreased by 2.25 percentage points from 14.58 in May 2020 to 12.33 percent in June 2020. The downward movers in the non-food basket were: Health (by 11.83 percentage points), Furniture; Household Equipment and Household Maintenance (by 1.46 percentage points) and Clothing and Footwear (by 0.43 percentage point).

¹ Food and Non-Alcoholic Beverages

² All other divisions

Table 1.2: 2020 Monthly Food and Non-food baskets inflation rates

Items	Jan	Feb	Mar	April	May	June
Food and Non-alcoholic beverages	7.46	8.30	9.87	10.54	16.60	16.94
Non-food	18.77	20.08	20.44	19.08	14.58	12.33

Table 2.0: Year-on-Year and Monthly Inflation Rates

	National CPI (2008=100)			Western Area/Freetown CPI (2008=100)		
	CPI	Year-on-Year % Change	Monthly Change	CPI	Year-on-Year % Change	Monthly Change
2016						
January	161.46	8.41	1.17	166.52	7.42	1.08
February	162.44	8.68	0.61	167.65	7.73	0.68
March	163.16	7.85	0.44	168.41	7.14	0.45
April	164.99	8.68	1.12	170.35	8.12	1.15
May	167.12	8.94	1.29	173.17	9.75	1.66
June	168.58	9.46	0.87	174.81	10.54	0.95
July	171.11	10.87	1.50	175.72	11.00	0.52
August	173.5	10.52	1.40	178.84	10.74	1.78
September	175.13	11.31	0.94	179.90	11.15	0.59
October	177.89	12.56	1.58	183.08	12.3	1.76
November	182.74	15.26	2.73	186.64	14.2	1.95
December	187.39	17.41	2.54	192.60	16.91	3.19
Average	171.29	10.83	1.35	176.47	10.58	1.31
2017						
January	191.59	18.66	2.24	197.56	18.64	2.58
February	194.63	19.82	1.59	200.70	19.72	1.59
March	196.15	20.22	0.78	202.36	20.16	0.83
April	197.66	19.80	0.77	204.09	19.81	0.85
May	198.72	18.91	0.54	204.49	18.09	0.20
June	200.85	19.14	1.07	206.40	18.07	0.93
July	202.87	18.56	1.01	207.94	18.33	0.75
August	204.75	18.01	0.93	209.55	17.17	0.77
September	206.35	17.83	0.78	211.50	17.56	0.93
October	207.88	16.86	0.74	212.93	16.30	0.67
November	212.46	16.26	2.20	217.34	16.45	2.07
December	216.11	15.33	1.72	220.98	14.74	1.67
Average	202.50	18.28	1.20	207.99	17.92	1.15
2018						
January	219.73	14.69	1.68	223.74	13.25	1.25
February	222.65	14.40	1.33	226.02	12.62	1.02
March	225.40	14.91	1.24	228.17	12.76	0.95
April	227.58	15.14	0.97	229.58	12.49	0.62
May	230.55	16.02	1.31	232.64	13.77	1.34
June	234.13	16.57	1.55	235.92	14.31	1.41
July	238.79	17.71	1.99	241.88	16.32	2.52
August	242.00	18.19	1.34	246.79	17.77	2.03
September	243.00	17.77	0.43	245.62	16.13	-0.47
October	241.30	16.06	-0.72	242.86	14.06	-1.12
November	247.60	16.55	2.64	250.50	15.25	3.14
December	246.90	14.25	-0.29	247.61	12.05	-1.15
Average	234.97	16.02	1.12	237.61	14.23	0.96
2019						
January	251.27	14.35	1.77	249.40	11.47	0.72
February	254.01	14.08	1.09	257.62	13.98	3.30
March	258.69	14.77	1.84	262.29	14.95	1.81
April	265.27	16.56	2.54	267.74	16.62	2.08
May	265.07	14.97	-0.08	266.18	14.41	-0.58
June	268.42	14.65	1.26	269.19	14.10	1.13
July	274.35	14.89	2.21	271.38	12.20	0.81
August	279.34	15.43	1.82	279.90	13.41	3.14
September	279.86	15.16	0.19	276.56	12.59	-1.19
October	279.49	15.85	-0.13	281.63	15.96	1.83
November	280.04	13.09	0.20	289.71	15.66	2.87
December	281.20	13.89	0.41	294.07	18.76	1.50
Average	269.75	14.81	1.09	272.14	14.51	1.45
2020						
January	285.45	13.60	1.51	299.50	20.09	1.84
February	291.33	14.69	2.06	306.04	18.79	2.18
March	298.95	15.56	2.62	310.61	18.42	1.49
April	305.28	15.08	2.12	315.76	17.94	1.66
May	306.07	15.47	0.26	319.41	20.00	1.15
Jun	306.97	14.36	0.29	315.75	17.29	-1.15

More information can also be obtained from our website: www.statistics.sl

For more detailed Information: Subscribe to the Detailed CPI Report. Please Contact:
The Statistician General, Statistics Sierra Leone, P. O. Box 595, Tower Hill, Freetown, SIERRA LEONE
E-mail: statistics@statistics.sl or info@statistics.sl

Table 3.0: National Consumer Price Index by Main COICOP Groups (2008=100)

	Food and Non-Alcoholic Beverages	Alcoholic Beverages, Tobacco and Narcotics	Clothing and Footwear	Housing, Water, Electricity, Gas and Other Fuels	Furniture, Household Equipment and Household Maintenance	Health	Transport	Communication	Recreation and Culture	Education	Restaurant and Hotels	Miscellaneous Goods and Services	All Items
Weight	41.86	1.71	7.34	13.7	5.86	11.36	7.75	2.04	1.47	2.88	0.92	3.13	100
Jan-16	170.36	152.47	169.99	145.74	177.58	163.18	144.44	130.14	154.92	126.34	153.31	152.88	161.46
Feb-16	171.54	152.62	171.01	146.41	178.05	164.29	144.51	130.39	156.42	126.97	157.65	153.68	162.44
Mar-16	172.4	153.87	171.48	146.79	178.88	164.84	144.91	130.4	162.12	127.06	158.59	154.42	163.16
Apr-16	175.07	154.98	173.33	147.2	179.71	167.24	145.24	130.53	163.02	127.91	159.73	155.48	164.99
May-16	177.33	157.43	177.21	147.75	182.84	169.79	149.09	130.56	164.25	128.18	159.44	157.01	167.12
Jun-16	179.4	159.59	179.49	149.56	184.78	168.89	149.79	132.34	165.5	128.4	160.07	157.72	168.58
Jul-16	182.88	160.87	183.52	150.46	187.58	171.16	149.65	133.7	167.86	129.21	161.13	159.48	171.11
Aug-16	186.78	162.19	185.77	151.09	192.19	172.42	150.21	133.81	169.31	129.38	161.47	159.52	173.5
Sep-16	187.72	164.38	187.75	152.38	193.4	177.12	150.71	134.75	170.37	133.23	162.07	160	175.13
Oct-16	190.45	166.36	190.81	152.59	196.42	181.38	151.95	135.41	174.46	135.65	163.86	169.43	177.89
Nov-16	194.83	171.07	198.03	160.05	202.6	181.71	162.58	140.13	174.81	136.54	170.53	176.28	182.74
Dec-16	200.23	175.3	205.36	164.61	209.1	182.92	165.11	145.55	176.87	136.64	175.86	183.31	187.39
Jan-17	204.76	181.11	216.4	165.98	215.6	183.42	173.05	148.89	180.22	136.84	182.64	187.32	191.59
Feb-17	208.42	186.2	221.43	167.42	221.35	185.87	173.85	150.43	180.65	136.91	182.74	190.46	194.63
Mar-17	210.81	190.78	221.69	167.97	222.42	186.13	176.25	150.52	181.21	137.08	184.93	191.65	196.15
Apr-17	211.73	192.07	224.05	168.43	226.5	188.8	180.03	153.23	181.88	137.21	186.93	193.3	197.66
May-17	212.33	193.55	227.95	168.96	226.53	189.34	183.8	154.16	182.71	137.22	189.74	195.38	198.72
Jun-17	214.56	195.64	233.71	169.47	230.04	191.33	184.16	156.1	185.35	137.51	190.92	197.51	200.85
Jul-17	217.85	197.43	234.78	169.8	231.65	193	184.7	156.96	185.8	137.65	192.15	199.62	202.87
Aug-17	220.49	202.41	235.42	170.01	234.36	194.21	185.1	157.52	186.46	138.55	195.97	203.91	204.75
Sept-17	221.96	204.02	237.81	170.27	237.6	196.62	186.54	160.62	187.72	138.85	199.6	205.61	206.35
Oct-17	223.88	206.03	239.05	170.71	240.1	197.87	187.36	161.93	190.35	139.17	203.05	207.79	207.88
Nov-17	231.59	209.96	242.24	172.65	242.46	199.36	187.63	163.72	193.65	141.25	205.38	212.08	212.46
Dec-17	236.14	215.57	248.21	174.79	246.89	201.37	188.95	164.78	196.29	143.49	211.1	214.87	216.11
Jan-18	240.61	218.27	251.93	176.68	249.13	205.92	190.98	165.94	198.83	147.19	214.47	217.67	219.73
Feb-18	243.6	222.52	254.76	178.69	254.02	209.47	191.54	170.77	201.11	148.5	220.16	220.6	222.65
Mar-18	246.07	226.68	257.38	180.06	260.28	213.6	192.93	171.25	205.24	150.83	225.93	224.25	225.4
Apr-18	248.17	229.31	258.64	181.16	262.12	217.72	193.83	172.23	207.54	152.61	230.49	228.49	227.58
May-18	252.09	232.24	262.07	183.59	263.81	219.84	195.17	172.8	209.48	153.13	234.05	231.32	230.55
Jun-18	256.72	236.77	265.64	185.6	268.26	223.15	196.28	173.87	211.05	154.68	238.77	234.5	234.13
Jul-18	259.39	240.41	267.99	197.69	274.18	226.57	211.78	175.02	212.51	155.74	244.95	235.47	238.79
Aug-18	264.13	243.64	274.6	202.29	289.45	224.45	215.98	144.21	212.73	157.46	254.01	231.41	241.99
Sep-18	266.47	249.53	275.38	203.96	283.93	226.97	219.94	146.47	219.42	119.82	251.8	240.5	243.02
Oct-18	262.55	241.85	278.15	201.81	285.75	228.72	220.56	147.15	217.34	119.82	270.9	232.25	241.26
Nov-18	270.26	256.4	286.95	207.29	290.83	232.6	223.78	148.09	222.5	120.55	258.64	243.09	247.62
Dec-18	266.29	250.55	283.81	208.13	284.5	246.04	229.18	144.51	215.92	120.55	289.65	227.76	246.9

Table 3.0: National Consumer Price Index by Main COICOP Groups (2008=100)

	Food and Non-Alcoholic Beverages	Alcoholic Beverages, Tobacco and Narcotics	Clothing and Footwear	Housing, Water, Electricity, Gas and Other Fuels	Furniture, Household Equipment and Household Maintenance	Health	Transport	Communication	Recreation and Culture	Education	Restaurant and Hotels	Miscellaneous Goods and Services	All Items
Jan-19	266.00	260.05	311.87	209.80	294.04	253.14	227.03	145.37	224.03	120.97	279.86	244.01	251.27
Feb-19	269.18	264.64	309.94	209.37	309.97	253.94	225.81	160.61	240.73	121.66	280.52	248.62	254.01
Mar-19	276.29	267.26	316.58	212.03	314.69	257.44	226.29	159.17	231.29	122.27	286.81	250.51	258.69
Apr-19	287.67	280.13	321.05	216.88	322.77	252.71	230.26	159.29	236.17	123.45	284.89	259.34	265.27
May-19	271.03	274.68	331.20	211.64	348.38	291.15	235.67	176.63	227.26	134.65	279.30	267.67	265.07
Jun -19	273.74	275.25	338.34	211.26	359.29	303.77	237.49	178.37	222.02	122.47	281.26	265.58	268.42
Jul-19	279.31	281.22	345.66	217.16	362.95	311.80	250.00	165.16	224.49	122.47	294.50	274.17	274.35
Aug-19	286.00	286.45	334.19	217.52	351.19	345.08	244.26	171.13	219.31	122.47	292.64	258.01	279.34
Sept- 19	288.59	281.58	334.92	218.53	356.37	331.87	250.41	155.92	218.37	122.47	328.86	267.89	279.86
Oct- 19	286.36	280.77	333.75	221.95	358.16	333.1	250.5	155.92	217.99	122.47	327.57	268.52	279.49
Nov- 19	280.04	269.2	333.1	226.15	344.01	343.26	249.99	155.92	223.13	206.57	318.96	263.91	280.04
Dec- 19	280.62	279.46	328.60	229.75	347.76	344.33	255.46	155.90	222.51	206.57	318.99	263.45	281.20
Jan- 20	285.84	288.03	337.24	231.49	347.52	342.89	267.38	155.87	223.65	206.57	339.5	270.3	285.45
Feb-20	291.53	275.23	341.22	233.51	335.71	371.28	268.79	163.83	224.43	206.57	336.83	266.44	291.33
Mar-20	303.57	279.46	349.3	229.35	340.8	382.19	265.91	172.83	231.42	206.57	344.58	277.43	298.95
Apr-20	317.98	284.66	354.54	221.18	347.49	384.89	262.71	172.84	233.56	206.57	349.09	280.92	305.28
May-20	316.02	286.87	358.67	223.69	349.37	389.01	263.61	174.33	233.85	206.57	357.22	284.91	306.07
Jun-20	320.11	291.3	364.95	223.57	355.04	369.92	273.12	176.07	235.21	206.57	361.83	289.13	306.97