



CONSUMER PRICE INDEX (CPI) April 2012: PRESS RELEASE

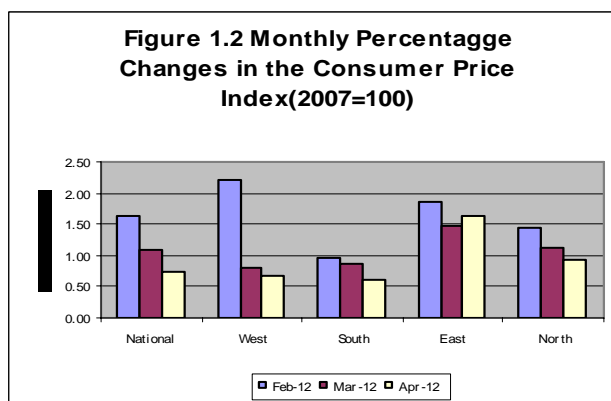
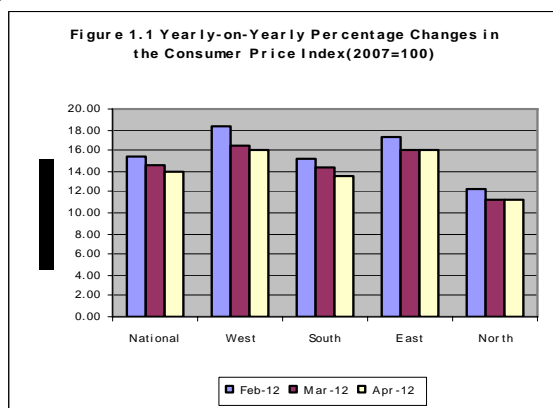
Released on Monday May 21, 2012 at 1:00 pm

APRIL 2012 MONTHLY INFLATION RATE INCREASES SLIGHTLY

The combined monthly CPI (2007=100) for April 2012 increased from 189.26 percent in March 2012 to 190.65 per cent in April 2012 resulting in a 0.73 percent increase in inflation rate this month. Similarly, the monthly rates of inflation increased in all the regions. Western Area (0.68 percent), Northern Region (0.92 percent), Southern region (0.60 percent) and the Eastern Region(1.65 percent) comprising of two centers; Kenema (1.30 percent) and Kono (0.88 percent) during the same period. Again, the composite year-on-year inflation rate (2006/2007=100) increased by 0.60 percentage point from 14.51 percent in March 2012 to 13.91 percent in April 2011.

The year-on-year rates of inflation decreased in all the regions except the Northern region when the year-on-year rates of inflation for March 2012 are compared with those for April 2012. In Eastern region the year-on-year rate of inflation decreased from 16.10 percent in March 2012 to 15.97 percent in April 2012, in Western Area from 16.56 percent to 16.09 percent and in Southern region from 14.36 percent to 13.53 percent while the year-on-year rate of inflation increased in the Northern region from 11.18 percent to 11.33 during the period under review.

Considering the old CPI series (1992=100), the year-on-year rates of inflation increased slightly in all the centers when the year-on-year rates of inflation for March 2012 are compared with those for April 2012. In Freetown the year-on-year rate of inflation increased from 16.37 percent in March 2012 to 16.42 percent in April 2012, in Kenema from 16.91 percent to 16.94 percent and in Makeni from 19.50 percent to 21.02 percent during the same period.



FACTORS INFLUENCING CHANGES IN THE MONTHLY RATE OF INFLATION

The combined monthly CPI for April increased from 189.26 in March 2012 to 190.65 in April, 2012 resulting in a 0.73 percent increase in inflation rate this month. The increase in the price level for April 2012 was as a result of the decrease in the supply of some of the food items in the CPI basket. There was a general increase in the price level in all the four regions affecting some of the components of the index. On a composite basis, there were increases in the indices for the following groups; food and non-alcoholic beverages (1.06 percent), alcoholic beverages, tobacco and narcotics (0.65 percent), furnishing, household equipment and household maintenance (0.29 percent), recreation and culture (0.02 percent) and restaurants and hotels (0.10 percent). The food products which prices increased this month include; bread and cereals(0.59 percent), fish and seafood(2.38 percent), meat (0.99 percent), fruits(0.86 percent), milk, cheese and eggs(1.08 percent) and vegetables(2.18 percent).

More information can also be obtained from our website: www.statistics.sl

For More Detailed Information: Subscribe to the Detailed CPI Report. Please Contact: The Statistician General, Statistics Sierra Leone P. O. Box 595, Tower Hill, Freetown, SIERRA LEONE Telephone: (232) 22- 223287 Call: (232) 76 – 609989 Facsimile: (232) 22- 223897 E-Mail: statistics@statistics.sl OR info@statistics.sl

THE ALL URBAN NATIONAL CONSUMER PRICE INDICES (2007=100) BY MAIN COICOP GROUPS

		Apr-11	Jan-12	Feb-12	Mar-12	Apr-12			
COICOP	WEIGHT	Month Previous Year -	Month m-3 for Current Year,	Month m-2 for Current Year	Month m-1 for Current Year	Month m for Current Year	Monthly Change	3 Months Change	12 months Change
O	a	b	c	d	e	f	g	h	i
Food and Non-Alcoholic Beverage	41.86	179.52	201.39	206.18	208.51	210.72	1.06	4.63	17.38
Alcoholic Beverage, Tobacco and Narcotics	1.71	190.96	214.56	218.91	221.81	223.25	0.65	4.05	16.91
Clothing and Footwear	7.34	148.49	176.45	181.94	185.94	186.56	0.34	5.73	25.64
Housing, Water, Electricity, Gas and other Fuels	13.70	164.53	173.13	173.94	174.48	176.48	1.14	1.94	7.26
Furnishing, Household Equipment and Household Maintenance	5.86	180.95	205.69	206.56	207.65	208.24	0.29	1.24	15.08
Health	11.36	175.29	180.28	183.17	187.27	187.72	0.24	4.13	7.10
Transport	7.75	146.45	157.72	156.34	157.08	156.33	-0.48	-0.88	6.75
Communication	2.04	107.70	108.25	108.30	108.41	108.41	0.00	0.15	0.66
Recreation and Culture	1.47	152.62	158.31	159.30	160.88	160.91	0.02	1.64	5.43
Education	2.88	123.65	133.99	134.02	134.02	134.03	0.00	0.03	8.39
Restaurant and hotels	0.92	113.65	120.88	126.62	129.39	129.51	0.10	7.14	13.96
Miscellaneous G&S	3.13	147.92	170.84	172.81	173.28	176.08	1.61	3.06	19.04
All items	100.00	167.37	184.22	187.22	189.26	190.65	0.73	3.49	13.91
Column Description									
Column O : COICOP 12 Functions									
Column A : CPI Weighting									
Column B : CPI Of The Given Month (M) For Previous Year									
Column C : CPI Of The Given Month (M -3) For Current Year									
Column D : CPI Of The Given Month (M -2) For Current Year									
Column E : CPI Of The Given Month (M -1) For Current Year									
Column G : CPI Monthly Change In % $((F-E) \times 100 / E)$									
Column H : CPI 3 Months Change In % $((F-C) \times 100 / C)$									
Column I : CPI 12 Months Change In % $((F-B) \times 100 / B)$									

The National CPI measures the change in prices, on average, from month to month, of the goods and services bought by most households, in Freetown, Bo, Kenema and Makeni including all expenditure groups and both families and single persons. Prices are collected for 251 items. All prices collected are the prevailing retail market prices from six (6) markets in the Greater Freetown area, three (3) Markets in Bo Town, three (3) markets in Kenema Town and two (2) markets in Makeni Town for weekly prices and other outlets for monthly items whose prices are less likely to fluctuate rapidly. The National Index was computed by aggregating the CPI for the four index towns previously published separately with different base periods. The old CPI series for Bo, Kenema, Makeni and Freetown were rebased to base year 2003, Computation methodology changed from the Modified to the Traditional Laspeyres, and transformed into the Classification of Individual Consumption by Purpose (COICOP) with 12 functions. The separate center CPIs were aggregated at the sub-class level at which level new weights were also introduced to obtain the Interim National Index.

FREETOWN CONSUMER PRICE INDEX (1992=100)-OLD SERIES

	Food	Beverage & Tobacco	Rent Rates & Repairs	Fuel & Power	Cloth & Footwear	Furniture Goods	Expan. Goods & services	Personal Transport	Tran sport & Comm.	Med. & Medicare	Education & Stationery	Enter & Recreation	Personal Goods & Services	All Items	Monthly % Change	Annual % Change
Wgts	54.13	3.63	3.92	6.51	7.35	1.86	2.46	1.16	4.77	3.45	4.11	3.72	2.93	100		
Jan-08	516.87	19.28	49.01	75.69	33.77	12.22	31.14	17.99	56.78	25.45	22.56	34.61	19.18	914.53	1.20	13.39
Feb-08	533.38	19.31	49.01	83.43	33.51	12.19	30.78	18.00	57.40	25.45	22.74	36.07	19.34	940.60	2.85	13.72
Mar-08	523.37	19.12	49.14	82.73	33.91	12.50	32.96	18.06	57.55	25.49	22.67	35.82	19.45	932.77	-0.83	14.77
April	538.90	19.41	49.14	79.81	33.79	12.09	29.86	17.99	57.53	25.45	22.66	36.36	19.22	942.20	1.01	14.35
May-08	543.55	19.26	49.01	83.62	34.31	12.56	30.56	19.92	62.44	25.50	23.41	36.11	19.71	959.97	1.89	16.81
June-08	550.56	19.46	49.01	83.59	34.64	12.69	31.06	19.94	61.42	25.93	23.99	36.12	20.30	968.74	0.91	16.59
Jul-08	559.21	19.43	49.01	83.59	34.38	12.65	32.13	19.96	60.78	25.91	23.99	36.32	20.34	977.70	0.93	17.97
Aug-08	570.42	20.08	49.01	83.78	35.49	12.89	32.53	20.07	60.78	25.93	23.99	36.47	20.65	992.10	1.47	15.43
Sept-08	603.05	20.24	49.02	79.40	35.42	13.07	30.10	20.25	60.78	25.93	24.54	36.39	20.64	1018.84	2.70	17.04
Oct-08	621.73	20.28	49.04	71.00	34.99	13.00	30.05	17.69	51.52	27.24	24.32	36.30	20.84	1018.03	-0.08	14.26
Nov-08	623.0	20.92	49.04	66.70	34.52	13.02	28.45	17.49	51.61	27.00	23.02	36.99	21.39	1013.14	-0.48	11.85
Dec-08	629.85	21.15	54.94	56.87	35.07	13.06	30.14	16.15	45.89	27.32	24.05	36.15	23.74	1014.39	0.12	12.25
Jan-09	628.46	20.70	57.32	59.76	35.08	13.03	30.20	16.06	45.60	27.46	23.80	35.96	23.38	1016.80	0.24	11.18
Feb-09	632.06	20.30	62.22	64.14	35.43	12.98	29.32	15.70	47.26	27.46	25.24	36.86	23.30	1032.27	1.52	9.75
Mar-09	625.01	19.98	62.22	62.52	35.88	12.91	28.91	15.50	47.26	27.46	25.24	37.39	23.19	1023.47	-0.85	9.72
Apr-09	624.77	20.22	62.22	65.84	35.84	12.95	28.60	15.40	47.65	27.46	25.26	37.39	23.13	1026.73	0.32	8.97
May-09	623.85	19.85	62.22	65.22	36.35	12.94	28.05	15.40	47.65	27.46	25.62	37.35	23.19	1025.16	0.15	6.79
Jun-09	633.82	19.84	62.22	67.91	36.40	13.34	27.77	17.81	50.96	27.54	25.58	37.35	23.58	1044.11	1.85	7.78
Jul-09	640.20	19.90	62.22	65.86	36.68	13.56	29.35	17.81	52.25	27.54	25.54	37.64	23.55	1052.10	0.76	7.61
Aug-09	650.61	19.70	62.22	66.31	37.71	13.88	31.37	18.79	52.28	33.57	26.41	37.60	24.44	1074.88	2.17	8.34
Sept-09	680.43	19.97	62.27	67.18	39.41	14.25	33.98	19.97	52.28	35.95	28.28	37.81	25.00	1116.74	3.89	9.61
Oct-09	693.19	20.36	62.66	67.81	40.24	14.21	30.57	20.32	52.37	35.07	27.58	37.79	25.44	1127.62	0.97	10.77
Nov-09	670.86	20.39	62.66	68.72	41.58	14.40	31.81	20.27	52.90	35.50	27.68	38.60	25.88	1111.27	-1.45	9.69
Dec-09	677.64	20.98	64.91	69.08	41.47	14.32	32.54	20.14	53.17	35.79	28.05	38.98	26.67	1123.73	1.12	10.78
Jan-10	700.84	22.01	67.84	69.29	41.98	14.80	35.74	20.45	53.17	37.15	28.32	40.32	28.92	1160.82	3.30	14.16
Feb-10	734.77	22.59	67.85	73.66	43.0	14.95	35.52	21.27	57.50	38.55	28.32	42.09	30.01	1210.07	4.24	17.22
Mar-10	733.45	21.95	67.94	71.44	42.96	14.92	35.16	21.37	56.86	39.35	28.32	42.41	30.03	1206.13	-0.33	17.85
Apr-10	737.23	22.72	68.01	72.18	43.70	15.20	35.53	21.62	57.36	40.99	28.52	42.43	30.37	1215.85	0.81	18.42
May-10	724.65	23.67	68.01	72.65	44.01	15.38	35.92	21.79	57.10	42.87	29.08	42.46	30.52	1208.11	-0.64	17.85
Jun-10	740.95	23.91	67.94	72.98	45.19	16.14	37.59	22.24	58.80	42.40	29.77	44.40	30.91	1233.23	2.08	18.11
Jul-10	748.40	24.15	68.92	73.70	45.26	16.14	36.88	22.13	58.80	41.06	31.01	46.30	30.91	1243.67	0.85	18.21
Aug-10	774.54	24.26	68.92	74.48	46.10	16.19	37.43	22.16	58.80	39.92	31.46	46.59	31.25	1272.10	2.29	18.35
Sept-10	824.46	24.1	68.92	73.05	46.47	16.25	37.93	22.14	58.80	40.84	31.59	46.89	31.88	1323.40	4.03	18.51
Oct-10	822.73	25.08	69.91	73.53	47.16	16.49	37.25	22.29	58.80	41.30	31.59	48.20	32.13	1326.46	0.23	17.63
Nov-10	804.57	25.13	69.92	75.14	47.23	16.64	37.30	23.37	62.93	41.30	31.59	48.22	32.10	1315.45	-0.83	18.37
Dec-10	813.86	25.21	69.99	74.73	47.45	16.93	38.22	23.56	62.93	42.27	33.30	49.00	33.02	1330.46	1.14	18.40
Jan-11	852.82	25.21	69.16	74.98	47.82	16.80	37.79	23.95	62.96	45.34	33.30	51.34	33.85	1375.32	3.37	18.48
Feb-11	895.95	25.53	69.24	76.31	47.93	16.97	37.40	24.60	62.99	45.35	33.30	52.18	33.89	1421.65	3.37	17.48
Mar-11	894.25	24.49	69.34	75.74	48.11	17.17	37.55	25.49	62.99	46.04	33.30	55.04	34.51	1424.02	0.17	18.07
Apr-11	897.06	24.92	69.34	75.88	49.87	18.03	37.55	25.55	62.99	46.04	33.33	55.69	35.85	1432.12	0.57	18.32
May-11	904.62	24.95	69.34	81.13	51.09	18.20	37.36	27.84	74.11	46.09	33.34	55.69	36.01	1459.77	1.93	20.83
Jun-11	913.11	25.39	69.34	84.22	51.67	18.46	37.42	30.51	73.84	46.15	33.65	56.56	36.84	1477.18	1.19	19.78
Jul-11	928.86	25.39	69.34	86.71	53.75	19.28	37.47	31.20	73.84	47.80	33.65	56.56	40.11	1503.96	1.81	20.93
Aug-11	944.79	25.25	69.36	86.33	54.59	19.84	36.87	31.43	74.31	47.86	33.65	55.56	40.79	1520.61	1.11	19.53
Sept-11	969.14	25.31	69.36	86.46	55.75	19.78	36.90	31.49	74.31	48.93	33.65	55.56	41.51	1548.15	1.81	16.98
Oct-11	974.36	24.66	69.36	87.22	57.15	20.00	36.91	31.55	73.46	50.34	30.09	55.56	41.41	1552.08	0.25	17.01
Nov-11	975.93	24.96	69.36	87.89	57.52	20.25	36.07	31.73	74.68	50.93	30.05	53.35	40.44	1553.16	0.07	18.07
Dec-11	973.53	25.16	69.36	87.61	57.89	20.26	37.51	32.30	75.92	51.81	30.05	53.44	40.62	1555.45	0.15	16.91
Jan-12	1015.86	25.95	69.35	86.67	57.32	20.89	37.78	32.30	76.76	53.21	29.63	52.34	40.60	1598.65	2.78	16.24
Feb-12	1054.91	26.83	69.36	90.28	60.45	21.62	37.71	32.31	75.80	53.30	29.67	53.52	40.73	1646.51	2.99	15.82
Mar-12	1058.39	29.02	69.36	87.11	62.93	22.51	38.35	32.47	76.25	53.66	31.86	54.22	40.96	1657.09	0.64	16.37
Apr-12	1055.91	29.34	69.36	87.90	64.10	22.59	38.21	32.47	76.25	54.22	31.86	54.72	40.95	1657.89	0.05	16.42

