



STATISTICS SIERRA LEONE (Stats SL)

Credible Data for National Development

CONSUMER PRICE INDEX NOVEMBER 2023 PRESS RELEASE

Released: 15th December, 2023 @ 12: 00 noon



CONTACT PERSONS:

(1) Mwaluma Andrew Bryma GEGBE, MA, MSc

Director of National Accounts and
Economic Statistics Division
Statistics Sierra Leone (Stats SL)
Mobile: +23279442430/ +23288000898
Email: mwaluma.gegbe@statistics.sl
Skype: mwaluma.gegbe

(2) Isata M. ALLIEU-KEIKURA, MSc
Principal Statistician and Head,
Price and Labour Statistics Section
National Accounts and Economic Statistics
Division, Statistics Sierra Leone (Stats SL)
Mobile: +23276580842/ +23234580842
Email: isata.allieu-keikura@statistics.sl

Approved for release by:

Andrew Bob JOHNNY, MSc
Statistician General & CEO
Statistics Sierra Leone (Stats SL)
Email: andrew.johnny@statistics.sl

15th December, 2023

CONTENTS

CONTENTS	i
LIST OF TABLES	ii
LIST OF FIGURES.....	ii
1.0 KEY FINDINGS	3
1.1 Headline Inflation Rates	3
1.2 Annual Year-On-Year (YOY) Consumer Price Inflation: Detailed by Main COICOP Headings.....	3
1.3 Monthly Consumer Price Inflation: Detailed by Main COICOP Headings	4
2.0 NOVEMBER 2023 CONSUMER PRICE INFLATION: DETAILED BY REGIONS.....	4
3.0 FOOD AND NON-FOOD COMPONENTS.....	6
4.0 IMPACT CONTRIBUTIONS OF COICOP DIVISIONS TO ANNUAL INFLATION RATE (YoY)	7
5.0 CPI COMPARISON FOR SELECTED ECOWAS MEMBER STATES	8

LIST OF TABLES

Table 1: National CPI and rates of inflation by main COICOP functions (December 2021=100).....	4
Table 1.1: National and Regional Year-on-Year and Monthly Inflation rates	5
Table 2: National and Western Region CPI, Year-on-Year and Monthly Inflation Rates	10
Table 3: National Consumer Price Index by Main COICOP Groups (December 2021=100)	12

LIST OF FIGURES

Figure 1a: Year-on-Year Percentage Changes in the CPI.....	5
Figure 1b: Monthly Percentage Changes in the CPI.....	5
Figure 2.1: Growth rate of selected Food and Non-Alcoholic items.....	6
Figure 2.2: Trends in Inflation rates for Food, Non-food and All items (YoY).....	7
Figure 3: Contributions of the COICOP divisions to inflation rate.....	7
Figure 4: Recent inflation rates for selected ECOWAS countries.....	8

1.0 KEY FINDINGS

1.1 Headline Inflation Rates

- Annual National Consumer Price Inflation (year-on-year) for November 2023 stood at 54.20 percent, down by 0.39 percentage point from 54.59 percent in October 2023.
- The monthly consumer price inflation for November 2023 is 1.59 percent; up by 2.19 percentage point from 0.85 percent in October, 2023.
- Annual National Food and non-alcoholic beverages inflation for November 2023 is 59.18 percent, down by 1.16 percentage points from 60.34 percent in October, 2023.
- National inflation for Non-food is 50.38 percent in November 2023 from 50.17 percent in October 2023; up by 0.21 percentage point.

1.2 Annual Year-On-Year (YOY) Consumer Price Inflation: Detailed by Main COICOP¹ Headings

Upward Movers



Housing, water, electricity, gas and other fuels, with weight 8.90 percent, increased from 34.29 percent in October 2023 to 34.58 percent in November 2023; the inflation rate increased by 0.29 percentage point, year-on-year.



Health, with weight 7.60 percent, increased from 55.09 percent in October 2023 to 58.30 percent in November 2023; the inflation rate increased by 3.21 percentage points, year-on-year.



Transport, with weight 8.60 percent, increased from 48.78 percent in October 2023 to 53.43 percent in November 2023; the inflation rate increased by 4.65 percentage points, year-on-year.



Communication, with weight 4.70 percent, increased from 42.87 percent in October 2023 to 44.98 percent in November 2023; the inflation rate increased by 2.11 percentage points, year-on-year.



Recreation and culture, with weight 2.60 percent, increased from 60.42 percent in October 2023 to 61.37 percent in November 2023; the inflation rate increased by 0.95 percentage point, year-on-year.



Restaurant and hotels, with weight 6.10 percent, increased from 73.50 percent in October 2023 to 79.31 percent in November 2023; the inflation rate increased by 5.81 percentage points, year-on-year.

Downward Movers



Food and non-alcoholic beverages, with weight 40.30 percent, declined by 1.16 percentage points from 60.34 percent in October 2023 to 59.18 percent in November 2023, year-on-year.

¹ Classification of Individual Consumption by Purpose



Alcoholic beverages, tobacco and narcotics, with weight 1.00 percent, **declined** by 4.57 percentage points from 50.16 percent in October 2023 to 45.59 percent in November 2023, year-on-year.



Clothing and footwear, with weight 7.70 percent, **declined** by 5.00 percentage points from 46.87 percent in October 2023 to 41.87 percent in November 2023, year-on-year.



Furniture, household equipment and household maintenance, with weight 5.60 percent, **declined** by 3.95 percentage points from 42.95 percent in October 2023 to 39.00 percent in November 2023, year-on-year.



Miscellaneous goods and services, with weight 3.90 percent, **declined** by 9.03 percentage points from 56.25 percent in October 2023 to 47.22 percent in November 2023, year-on-year.

Non-Movers



For Education services, with weight 3.10 percent, **no change** was noticed between October 2023 and November 2023, Year-on-year.

1.3 Month-on-Month (MoM) Consumer Price Inflation: Detailed by Main COICOP² Headings

Upward Movers



Food and non-alcoholic beverages, with weight 40.30 percent, **increased** from 0.85 percent in October 2023 to 1.19 percent in November 2023; the inflation rate increased by 0.34 percentage points, month-on-month.



Communication, with weight 4.70 percent, **increased** from -2.16 percent in October 2023 to 2.35 percent in November 2023; the inflation rate increased by 4.51 percentage points, month-on-month.

Downward Movers



Alcoholic beverages, tobacco and narcotics, with weight 1.00 percent **declined** by 0.77 percentage points from 1.57 percent in October 2023 to 0.80 percent in November 2023, month-on-month.



Clothing and footwear, with weight 7.70 percent, **declined** by 5.62 percentage points from 6.48 percent in October 2023 to 0.86 percent in November 2023, month-on-month.



Housing, water, electricity, gas and other fuels, with weight 8.90 percent, **declined** by 2.01 percentage points from 2.75 percent in October 2023 to 0.74 percent in November 2023, month-on-month.

² Classification of Individual Consumption by Purpose



Furniture, household equipment and household maintenance, with weight 5.60 percent, **declined** by 0.77 percentage point from 3.76 percent in October 2023 to 2.99 percent in November 2023, month-on-month.



Miscellaneous goods and services, with weight 3.90 percent **declined** by 8.71 percentage points from 7.21 percent in October 2023 to -1.50 percent in November 2023, month-on-month.



Health, with weight 7.60 percent, **declined** by 2.27 percentage points from 7.15 percent in October 2023 to 4.88 percent in November 2023, month-on-month.



Transport, with weight 8.60 percent, **declined** by 4.39 percentage points from 6.92 percent in October 2023 to 2.53 percent in November 2023, month-on-month.



Recreation and culture, with weight 2.60 percent **declined** by 3.57 percentage points from 6.00 percent in October 2023 to 2.43 percent in November 2023, month-on-month.



Education services, with weight 3.10 percent, **declined** by 48.9 percentage points from 48.9 percent in October 2023 to 0.00 percent in November 2023, month-on-month.



Restaurant and hotels, with weight 6.10 percent, **declined** by 4.30 percentage points from 5.94 percent in October 2023 to 1.64 percent in November 2023, month-on-month.

Table 1 below shows the National Consumer Price Indexes of the months of November 2022 and August, September, October, November 2023; and their inflation rates by the 12 main COICOP functions.

Table 1: National CPI and rates of inflation by main COICOP functions (December 2021=100)

		Nov - 22	Aug - 23	Sept - 23	Oct- 23	Nov- 23	Inflation Rates		
COICOP	WEIGHT	Month Previous Year-	Month m-3 for Current Year	Month m-2 for Current Year	Month m-1 for Current Year	Month m for Current Year	Monthly Inflation	3 Months Change Inflation	12 Months Inflation
Food and Non-Alcoholic Beverages	40.3	142.49	214.85	222.25	224.15	226.81	1.19	5.57	59.18
Alcoholic Beverages, Tobacco and Narcotics	1.0	112.07	154.45	159.36	161.86	163.16	0.80	5.64	45.59
Clothing and Footwear	7.7	116.78	152.57	154.27	164.26	165.67	0.86	8.59	41.87
Housing, Water, Electricity, Gas and Other Fuels	8.9	117.80	145.03	153.17	157.38	158.54	0.74	9.32	34.58
Furniture, Household Equipment and Household Maintenance	5.6	148.95	188.62	193.74	201.02	207.04	2.99	9.77	39.00
Health	7.6	122.01	162.36	171.86	184.15	193.14	4.88	18.96	58.30
Transport	8.6	140.14	177.30	196.13	209.70	215.01	2.53	21.27	53.43
Communication	4.7	104.17	144.36	150.82	147.56	151.03	2.35	4.62	44.98
Recreation and Culture	2.6	132.20	186.69	196.48	208.27	213.33	2.43	14.27	61.37
Education	3.1	90.18	90.18	90.18	134.28	134.28	0.00	48.90	48.90
Restaurant and Hotels	6.1	137.25	214.41	228.56	242.14	246.10	1.64	14.78	79.31
Miscellaneous Goods and Services	3.9	132.92	181.67	185.30	198.66	195.69	-1.50	7.72	47.22
All Items	100.0	132.24	185.34	193.41	200.72	203.91	1.59	10.02	54.20

2.0 NOVEMBER 2023 CONSUMER PRICE INFLATION: DETAILED BY REGIONS

The national monthly CPI increased from 200.72 in October 2023 to 203.91 in November 2023, resulting to a month-on-month (MoM) inflation of 1.59 percent for November 2023.

Also, the national yearly CPI increased from 132.24 in November 2022 to 203.91 in November 2023, causing a year-on-year (YoY) inflation of 54.20 percent for November 2023; indicating a slight decrease when compared with 54.59 percent in October 2023.

Two regions moved upward and three downwards: Upwards movers are Western region from 53.97 percent in October to 56.11 percent in November 2023 and Eastern region from 49.24 percent in October to 50.39 percent in November 2023. Downward movers are Southern region from 57.54 percent in October to 54.14 percent in November 2023, North-west region from 61.82 percent in October to 53.48 in November 2023 and Northern region from 53.05 percent in October to 52.76 percent in November 2023.

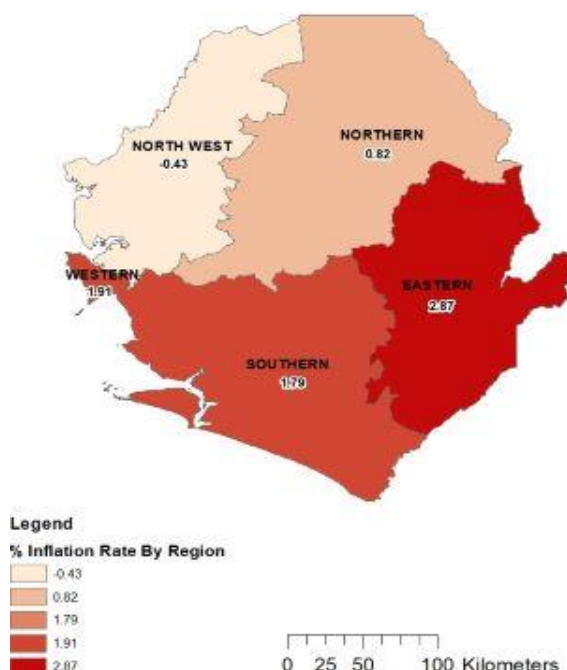
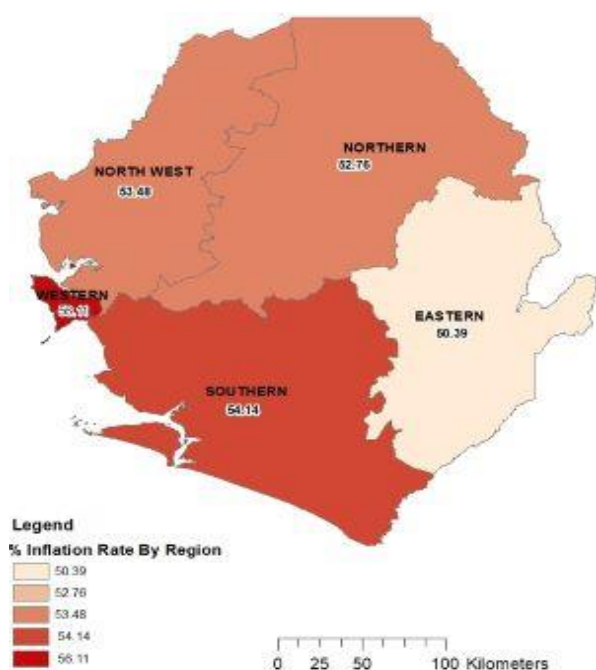
Table 1.1: National and Regional Year-on-Year and Month-on-Month Inflation rates

December 2021=100												
Month	National		Western Area		Eastern Region		Southern Region		Northern Region		North-west Region	
	Year-On-Year	Month-on-Month	Year-On-Year	Month-on-Month	Year-On-Year	Month-on-Month	Year-On-Year	Month-on-Month	Year-On-Year	Month-on-Month	Year-On-Year	Month-on-Month
Oct. 2023	54.59	3.78	53.97	4.37	49.24	1.80	57.54	2.45	53.05	4.47	61.82	4.74
Nov. 2023	54.20	1.59	56.11	1.91	50.39	2.87	54.14	1.79	52.76	0.82	53.48	-0.43

It is observed from the table above that the year-on-year inflation rate for the Western Area region is above the national estimate for the month of November 2023; while all other regions' estimates are below.

The figures below illustrate the yearly (1A) and monthly (1B) inflation rates at regional levels.

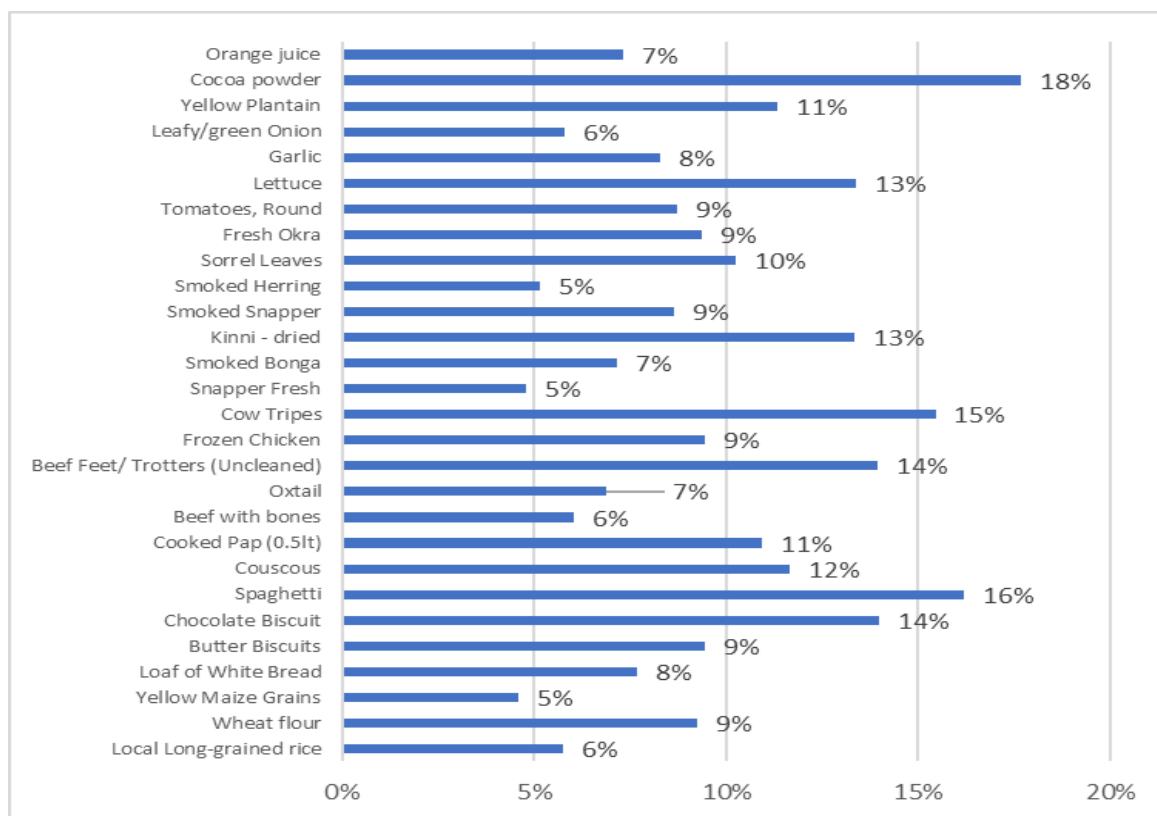
Figure 1A: Regional Year-on-Year (Yearly) inflation rates **Figure 1B: Regional Month-on-Month (Monthly) inflation rates**



3.0 FOOD³ AND NON-FOOD⁴ COMPONENTS

Food and non-alcoholic beverages inflation decreased by 1.16 percentage points from 60.34 percent in October 2023 to 59.18 percent in November 2023. In this division, food inflation decreased by 1.38 percentage points from 60.28 percent in October 2023, while the non-alcoholic beverages inflation increased by 4.54 percentage points from 61.64 percent in October 2023.

Figure 2.1: Growth rate of selected Food and non-alcoholic items

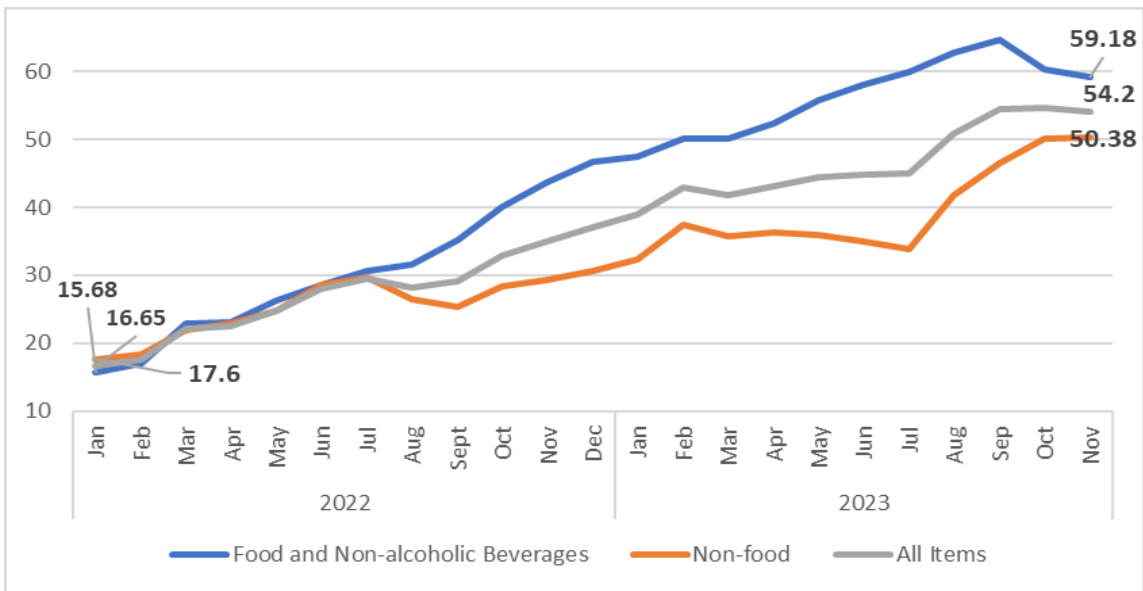


The non-food component shows inflation increased from 50.17 percent in October 2023 to 50.38 percent in November 2023; that is 0.21 percentage point increase. In this component, six divisions went up and four went down. Noticeable increases were observed in Restaurant and hotels, by 5.81 percentage points; Transport, by 4.65 percentage points and Health, by 3.21 percentage points.

³ Food and Non-Alcoholic Beverages

⁴ All other main COICOP Functions/divisions excluding Food and Non-Alcoholic Beverages

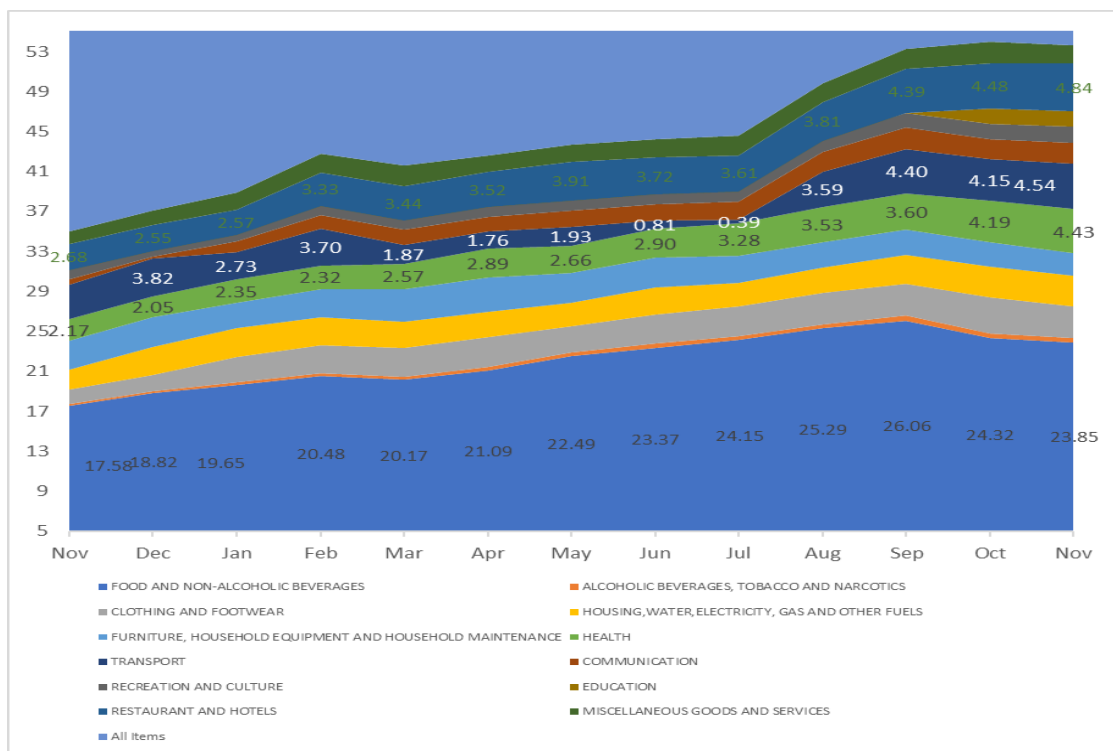
Figure 2.2: Trends in Inflation rates for Food, Non-food and All items (YoY)



4.0 IMPACT CONTRIBUTIONS OF COICOP DIVISIONS TO ANNUAL INFLATION RATE (YoY)

Annual National Consumer Price Inflation (year-on-year) for November 2023 stood at 54.20 percent, down by 0.39 percentage point from 54.59 percent in October 2023. Impact analysis relative the weights of the divisions, shows Food and non-alcoholic beverages continues to make the most impact on inflation, though it declined in November 2023; followed by Transport and Health divisions.

Figure 3: Impact contributions of the COICOP divisions to inflation rate

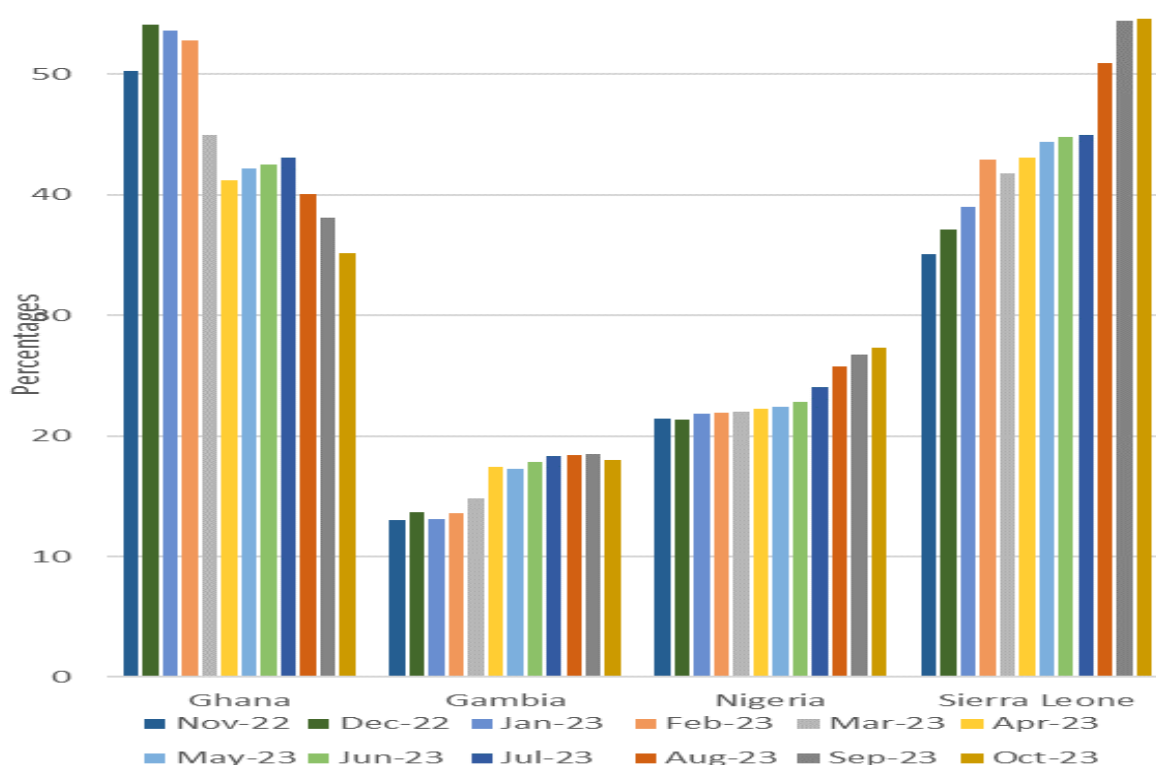


Concluding Note: We noted a less than one percentage point decrease in the year-on-year inflation rate and slightly over one percentage point decline in Food and non-alcoholic beverages in November 2023. We further observed that the national estimate is above Eastern, Southern, Northern and North-west regions', but below the Western Area's estimate. In conclusion, the national inflation was mainly triggered by the Western area's inflations, especially the Food and non-alcoholic beverages which increased by almost five percentage points.

5.0 CPI COMPARISON FOR SELECTED ECOWAS MEMBER STATES

Two of the selected countries (Nigeria and Sierra Leone) reported minimal percentage point increases in inflation rates for the month of October 2023; and the other two report decreases.

Figure 4: Recent inflation rates of selected ECOWAS countries



NOTE: The National CPI measures the change in prices, on average, from month to month, of the goods and services bought by households, in Freetown, Bo, Kenema, Kono, Makeni, Port Loko-Kambia and include all expenditure groups. Prices are collected for least 440 items. All prices collected are the prevailing retail market prices from six (6) markets in Freetown and, three (3) Markets each in Bo, Kenema, Kono, Makeni, Port Loko-Kambia and for weekly prices and other outlets for monthly items whose prices are less likely to fluctuate rapidly. We are using the Modified Laspeyres formula to compute indices according to the Classification of Individual Consumption by Purpose (COICOP) with 12 functions. Sierra Leone has recently rebased the CPI to December 2021, increased the number of items in the basket and expanded the coverage to North-West region.

Table 2: National and Western Region CPI, Year-on-Year and Monthly Inflation Rates

	National CPI (December 2021=100)			Western Area/Freetown CPI (December 2021=100)		
	CPI	Year-on- Year % Change	Monthly Change	CPI	Year-on – Year % Change	Monthly Change
2019						
January	68.60	14.35	1.78	67.09	11.46	0.72
February	69.34	14.08	1.08	69.30	13.96	3.29
March	70.62	14.77	1.85	70.56	14.96	1.82
April	72.42	16.56	2.55	72.03	16.63	2.08
May	72.36	14.97	-0.08	71.61	14.41	-0.58
June	73.28	14.64	1.27	72.42	14.10	1.13
July	74.90	14.89	2.21	73.01	12.20	0.81
August	76.26	15.44	1.82	75.30	13.42	3.14
September	76.40	15.16	0.18	74.40	12.59	-1.20
October	76.30	15.85	-0.13	75.76	15.95	1.83
November	76.45	13.09	0.20	77.94	15.66	2.88
December	76.77	13.90	0.42	79.11	18.77	1.50
Average	73.64	14.81	1.10	73.21	14.51	1.45
2020						
January	77.93	13.60	1.51	80.57	20.09	1.85
February	79.53	14.70	2.05	82.33	18.8	2.18
March	81.61	15.56	2.62	83.56	18.42	1.49
April	83.34	15.08	2.12	84.95	17.94	1.66
May	83.56	15.48	0.26	85.93	20.00	1.15
June	83.80	14.36	0.29	84.94	17.29	-1.15
July	84.86	13.30	1.26	86.41	18.35	1.73
August	86.42	13.32	1.84	87.49	16.19	1.25
September	86.87	13.70	0.52	88.39	18.80	1.03
October	85.24	11.72	-1.88	85.64	13.04	-3.11
November	84.58	10.63	-0.77	85.46	9.65	-0.21
December	84.79	10.45	0.25	86.09	8.82	0.74
Average	83.54	13.49	0.84	85.15	16.45	0.72
2021						
January	86.89	11.50	2.48	88.05	9.28	2.28
February	88.18	10.88	1.48	88.55	7.55	0.57
March	88.92	8.96	0.84	90.16	7.90	1.82
April	91.35	9.61	2.73	91.84	8.11	1.86
May	91.75	9.80	0.44	92.56	7.72	0.78
June	92.35	10.20	0.65	93.58	10.17	1.10
July	93.77	10.50	1.54	93.96	8.74	0.41
August	95.82	10.88	2.19	95.87	9.58	2.03
September	96.98	11.64	1.21	96.83	9.55	1.00
October	97.64	14.55	0.68	98.1	14.55	1.31
November	97.92	15.77	0.29	98.75	15.55	0.66
December	100.00	17.94	2.12	100.00	16.16	1.27
Average	93.46	11.85	1.39	94.02	10.41	1.26

Table 2: (Contd.)

	National CPI (December 2021=100)			Western Area/Freetown CPI (December 2021=100)		
	CPI	Year-on- Year % Change	Monthly Change	CPI	Year-on – Year % Change	Monthly Change
2022						
January	101.36	16.65	1.36	100.57	14.22	0.57
February	103.69	17.59	2.30	102.76	16.05	2.18
March	108.54	22.06	4.68	108.21	20.02	5.30
April	111.85	22.44	3.05	110.28	20.08	1.91
May	114.57	24.87	2.43	112.97	22.05	2.44
June	118.16	27.95	3.13	117.13	25.17	3.68
July	121.40	29.47	2.74	119.38	27.05	1.92
August	122.79	28.15	1.14	120.23	25.41	0.71
September	125.20	29.10	1.96	121.51	25.49	1.06
October	129.84	32.98	3.71	129.71	32.22	6.75
November	132.24	35.05	1.85	130.37	31.94	0.51
December	137.09	37.09	3.67	135.93	35.93	4.26
Average	118.89	26.95	2.67	117.42	24.64	2.61
2023						
January	140.36	38.99	2.39	136.73	35.96	0.59
February	147.98	42.96	5.43	144.97	41.08	6.03
March	153.58	41.74	3.78	149.90	38.53	3.40
April	160.00	43.05	4.00	155.72	41.20	3.49
May	165.47	44.43	3.42	160.61	42.17	3.14
Jun	171.11	44.81	3.41	166.98	42.56	3.97
Jul	176.00	44.98	2.86	171.82	43.93	2.90
Aug	185.34	50.94	5.31	183.73	52,82	6.93
Sept	193.41	54,48	4.35	191.35	57.48	4.15
Oct	200.72	54.59	3.78	199.71	53.97	4.37
Nov	203.91	54.20	1.59	203.52	56.11	1.91

Table 3: National Consumer Price Index by Main COICOP Groups (December 2021=100)

	Food and Non-Alcoholic Beverages	Alcoholic Beverages, Tobacco and Narcotics	Clothing and Footwear	Housing, Water, Electricity, Gas and Other Fuels	Furniture, Household Equipment and Household Maintenance	Health	Transport	Communication	Recreation and Culture	Education	Restaurant and Hotels	Miscellaneous Goods and Services	All Items
Weight	40.3	1	7.7	8.9	5.6	7.6	8.6	4.7	2.6	3.1	6.1	3.9	100.00
Jan-19	68.98	70.55	74.4	79.57	65.8	60.83	68.41	75.11	75.4	35.02	64.13	78.55	68.6
Feb-19	69.8	71.8	73.94	79.41	69.37	61.03	68.04	82.98	81.02	35.22	64.28	80.03	69.34
Mar-19	71.65	72.51	75.53	80.42	70.43	61.87	68.19	82.23	77.84	35.4	65.72	80.64	70.62
Apr-19	74.6	76	76.59	82.26	72.23	60.73	69.38	82.29	79.49	35.74	65.28	83.48	72.42
May-19	70.28	74.52	79.01	80.27	77.96	69.97	71.01	91.25	76.49	38.98	64	86.16	72.36
Jun -19	70.99	74.67	80.72	80.13	80.41	73	71.56	92.15	74.72	35.45	64.45	85.49	73.28
Jul-19	72.43	76.29	82.46	82.37	81.22	74.93	75.33	85.33	75.56	35.45	67.48	88.26	74.9
Aug-19	74.16	77.71	79.73	82.5	78.59	82.93	73.6	88.41	73.81	35.45	67.06	83.05	76.26
Sept-19	74.84	76.39	79.9	82.89	79.75	79.76	75.46	80.55	73.49	35.45	75.35	86.23	76.4
Oct- 19	74.26	76.17	79.62	84.18	80.15	80.05	75.48	80.55	73.37	35.45	75.06	86.44	76.3
Nov- 19	72.62	73.03	79.47	85.78	76.99	82.49	75.33	80.55	75.1	59.80	73.09	84.95	76.45
Dec- 19	72.77	75.82	78.39	87.14	77.83	82.75	76.98	80.54	74.89	59.80	73.09	84.8	76.77
Jan- 20	74.12	78.14	80.46	87.8	77.77	82.4	80.57	80.53	75.27	59.80	77.79	87.01	77.93
Feb-20	75.6	74.67	81.41	88.57	75.13	89.23	80.99	84.64	75.53	59.80	77.18	85.77	79.53
Mar-20	78.72	75.82	83.33	86.99	76.27	91.85	80.12	89.29	77.89	59.80	78.96	89.3	81.61
Apr-20	82.46	77.23	84.58	83.89	77.77	92.50	79.16	89.3	78.61	59.80	79.99	90.43	83.34
May-20	81.95	77.83	85.57	84.84	78.19	93.49	79.43	90.06	78.7	59.80	81.85	91.71	83.56
Jun-20	83.01	79.03	87.07	84.80	79.46	88.90	82.3	90.97	79.16	59.80	82.91	93.07	83.8
Jul-20	84.94	79.08	88.5	84.81	80.16	89.19	83.31	90.07	80.40	59.80	83.09	90.84	84.86
Aug-20	87.31	78.99	90.07	84.71	81.00	90.86	82.94	92.30	80.75	59.80	82.41	92.97	86.42
Sept-20	88.12	78.05	90.63	85.77	81.90	90.73	82.27	90.70	81.11	59.80	79.44	93.14	86.87
Oct-20	84.42	77.01	94.15	83.84	81.97	90.56	81.09	89.99	80.78	59.80	79.08	94.13	85.24
Nov-20	83.49	75.86	93.3	82.71	81.68	91.37	80.89	90.26	79.16	59.80	76.71	92.3	84.58
Dec-20	83.75	80.38	93.4	83.70	82.97	88.91	82.09	93.31	78.43	65.21	76.66	90.24	84.79
Jan-21	88.12	80.29	92.83	84.33	82.56	89.69	81.64	93.65	78.62	65.21	76.7	90.99	86.89
Feb-21	90.41	80.84	91.95	88.41	85.01	86.73	84.93	93.87	79.03	65.21	78.43	92.36	88.18
Mar-21	90.88	83.38	90.61	89.53	85.15	90.14	85.10	92.19	79.02	65.21	78.01	92.22	88.92
Apr-21	95.36	87.89	93.51	90.09	86.13	89.45	85.5	92.19	79.36	65.21	79.63	91.61	91.35
May-21	96.34	87.34	91.12	90.31	86.43	90.08	84.89	92.19	79.78	65.21	84.02	92.18	91.75
Jun-21	97.22	88.65	92.22	91.89	88.29	89.09	85.32	92.19	80.39	65.56	84.31	89.92	92.35
Jul-21	98.03	94.51	93.68	92.22	92.84	89.96	92.35	92.2	81.54	65.56	85.34	91.87	93.77
Aug-21	100.31	98.11	95.31	94.64	92.70	91.46	99.61	92.22	82.67	65.56	85.67	92.41	95.82
Sept-21	99.83	100.05	95.13	95.87	95.75	94.21	99.45	92.21	86.21	78.23	93.04	97.60	96.98
Oct-21	99.76	99.84	98.37	95.71	96.40	94.46	99.17	92.22	90.18	86.86	93.79	99.51	97.64
Nov-21	99.21	99.17	98.38	96.05	98.16	94.92	99.71	93.83	94.80	94.02	95.35	100.74	97.92
Dec-21	100.00	100.00	100.00	100.00	100.00	100.00	100.00	100.00	100.00	100.00	100.00	100.00	100.00

Table 3: (Contd.)

	Food and Non-Alcoholic Beverages	Alcoholic Beverages, Tobacco and Narcotics	Clothing and Footwear	Housing, Water, Electricity, Gas and Other Fuels	Furniture, Household Equipment and Household Maintenance	Health	Transport	Communication	Recreation and Culture	Education	Restaurant and Hotels	Miscellaneous Goods and Services	All Items
Jan-22	101.94	99.63	96.04	101.08	109.54	101.29	99.13	100.17	102.54	100.00	101.72	101.51	101.36
Feb-22	105.86	98.85	97.29	103.12	110.56	103.13	98.48	100.88	104.85	100.00	104.92	102.84	103.69
Mar-22	111.75	103.03	98.32	105.97	109.63	107.18	115.52	101.32	107.26	100.00	108.62	104.71	108.54
Apr-22	117.29	104.39	100.38	107.21	114.59	105.64	117.57	102.42	109.12	100.00	112.64	107.62	111.85
May-22	121.67	105.38	102.14	107.96	116.93	108.31	116.74	101.88	112.45	100.00	117.79	110.36	114.57
Jun-22	124.92	109.68	104.38	109.41	119.44	109.47	129.86	103.10	116.08	96.81	123.56	115.00	118.16
Jul-22	128.01	111.18	106.58	111.54	124.78	107.54	139.33	102.83	122.51	96.81	129.40	118.73	121.40
Aug-22	132.01	113.55	107.79	112.45	131.18	110.87	124.67	101.39	124.23	96.81	131.91	121.32	122.79
Sept-22	134.97	103.16	109.41	115.94	132.78	116.62	129.22	102.91	125.29	90.18	132.93	121.97	125.20
Oct-22	139.80	107.79	111.84	117.19	140.62	118.74	140.95	103.28	129.83	90.18	139.56	127.14	129.84
Nov-22	142.49	112.07	116.78	117.8	148.95	122.01	140.14	104.17	132.20	90.18	137.25	132.92	132.24
Dec-22	146.70	114.84	121.52	130.89	154.1	126.98	144.89	103.96	134.55	90.18	141.74	138.39	137.09
Jan-23	150.37	119.76	127.70	134.13	158.63	132.61	130.97	124.13	139.00	90.18	144.61	144.95	140.36
Feb-23	159.01	127.98	132.9	135.76	166.68	134.68	141.35	129.21	155.51	90.18	162.14	152.27	147.98
Mar-23	167.02	133.18	135.44	137.08	172.92	143.45	140.99	133.25	159.34	90.18	169.94	158.98	153.58
Apr-23	178.67	138.68	139.34	138.11	184.17	145.79	141.96	133.49	162.60	90.18	177.58	154.36	160.00
May-23	189.58	143.88	136.79	136.87	179.71	146.22	143.27	137.36	169.35	90.18	193.20	157.57	165.47
Jun-23	197.36	150.95	143.86	142.71	183.09	151.28	142.27	138.77	169.73	90.18	198.84	169.78	171.11
Jul-23	204.73	152.42	147.57	141.10	184.56	153.89	145.73	142.36	180.68	90.18	205.94	177.40	176.00
Aug-23	214.85	154.45	152.57	145.03	188.62	162.36	177.30	144.37	186.69	90.18	214.41	181.67	185.34
Sept-23	222.25	159.36	154.27	153.17	193.74	171.86	196.13	150.82	196.48	90.18	228.56	185.30	193.41
Oct-23	224.15	161.86	164.26	157.38	201.02	184.15	209.70	147.56	208.27	134.28	242.14	198.66	200.72
Nov-23	226.81	163.16	165.67	158.54	207.04	193.14	215.01	151.03	213.33	134.28	246.1	195.69	203.91