



CONSUMER PRICE INDEX NOVEMBER 2022 PRESS RELEASE

Released: 20th December, 2022 @ 12: 00 noon



CONTACT PERSONS:

(1) Mwaluma Andrew Bryma GEGBE, MA, MSc

Director of National Accounts and
Economic Statistics Division
Statistics Sierra Leone (Stats SL)
Mobile: +23279442430/ +23288000898
Email: mwaluma.gegbe@statistics.sl
Skype: mwaluma.gegbe

(2) Isata M. ALLIEU-KEIKURA, MSc

Principal Statistician and Head,
Price and Labour Statistics Section
National Accounts and Economic Statistics
Division, Statistics Sierra Leone (Stats SL)
Mobile: +23276580842/ +23234580842
Email: isata.allieu-keikura@statistics.sl

Reviewed by

Andrew Bob JOHNNY, MSc

Deputy Statistician General
Statistics Sierra Leone (Stats SL)
Email: andrew.johnny@statistics.sl

Approved for release by:

Prof. Osman SANKOH, DSc, COR

Statistician General & CEO
Statistics Sierra Leone (Stats SL)
Email: osman.sankoh@statistics.sl
Skype: oasankoh

20th December, 2022

CONTENTS

CONTENTS	i
LIST OF TABLES	ii
LIST OF FIGURES.....	ii
1.1 Headline Inflation Rates	3
1.2 Annual Year-On-Year (YOY) Consumer Price Inflation: Detailed by Main COICOP Headings.....	3
1.3 Monthly Consumer Price Inflation: Detailed By Main COICOP Headings.....	4
2.0 OCTOBER 2022 CONSUMER PRICE INFLATION: DETAILED BY REGIONS.....	4
3.0 FOOD AND NON-FOOD COMPONENTS.....	7
4.0 CONTRIBUTIONS OF COICOP DIVISIONS TO ANNUAL INFLATION RATE (YoY).....	7
5.0 CPI COMPARISON FOR SELECTED ECOWAS MEMBER STATES	8

LIST OF TABLES

Table 1:	National CPI and rates of inflation by main COICOP functions (December 2021=100) ...	4
Table 1.1:	National and Regional Year-on-Year and Monthly Inflation rates	6
Table 1.2:	2022 Food and Non-food inflation rates	7
Table 2:	National and Western region CPI, Year-on-Year and Monthly Inflation Rates.....	9
Table 3:	National Consumer Price Index by Main COICOP Groups (December 2021=100)	10

LIST OF FIGURES

Figure 1a:	Year-on-Year Percentage Changes in the CPI.....	5
Figure 1b:	Monthly Percentage Changes in the CPI.....	5
Figure 2:	Contributions of the COICOP divisions to inflation rate.....	7
Figure 3:	Recent inflation rates for selected ECOWAS countries.....	8

1.0 KEY FINDINGS

1.1 Headline Inflation Rates

- Annual National Consumer Price Inflation (year-on-year) for November 2022 stood at 35.05 percent, **up by 2.07 percentage points** from 32.98 percent in October 2022.
- The monthly consumer price inflation for November 2022 is 1.85 percent; **down by 1.86 percentage points** from 3.71 percent in October, 2022.
- Annual National Food and non-alcoholic beverages inflation for November 2022 is 43.62 percent, **up by 3.48 percentage points** from 40.14 percent in October, 2022.
- National inflation for Non-food is 29.38 percent in November 2022 from 28.41 percent in October; **up by 0.97 percentage point**.

1.2 Annual Year-On-Year (YOY) Consumer Price Inflation: Detailed by Main COICOP¹ Headings

Upward Movers



Food and non-alcoholic beverages, with weight 40.30 percent, **increased** from 40.14 percent in October 2022 to 43.62 percent in November 2022; the inflation rate increased by 3.48 percentage points year-on-year.



Alcoholic beverages, tobacco and narcotics, with weight 1.00 percent

increased from 7.96 percent in October 2022 to 13.01 percent in November 2022; the inflation rate increased by 5.05 percentage points year-on-year.



Clothing and footwear, with weight 7.70 percent, **increased** from 13.69 percent in October 2022 to 18.70 percent in November 2022; the inflation rate increased by 5.01 percentage points.



Housing, water, electricity, gas and other fuels, with weight 8.90 percent, **increased** from 22.44 percent in October 2022 to 22.64 percent in November 2022; the inflation rate increased by 0.20 percentage point year-on-year.



Furniture, household equipment and household maintenance, with weight 5.60 percent, **increased** from 45.87 percent in October 2022 to 51.74 percent in November 2022; the inflation rate increased by 5.87 percentage points year-on-year.



Health, with weight 7.60 percent, **increased** from 25.70 percent in October 2022 to 28.54 percent in November 2022; the inflation rate increased by 2.84 percentage points year-on-year.



Miscellaneous goods and services, with weight 3.90 percent, **increased** from 27.77 percent in October 2022 to 31.94 percent in November 2022; the inflation rate increased by 4.17 percentage points year-on-year.

¹ Classification of Individual Consumption by Purpose

Downward Movers



Transport, with weight 8.60 percent, **declined** by 1.58 percentage points from 42.13 percent in October 2022 to 40.55 percent in November 2022.



Communication, with weight 4.70 percent, **declined** by 0.97 percentage points from 11.99 percent in October 2022 to 11.02 percent in November 2022.



Recreation and culture, with weight 2.60 percent, **declined** by 4.52 percentage points from 43.97 percent in October 2022 to 39.45 percent in November 2022.



Education services, with weight 3.10 percent, **declined** by 7.90 percentage points from 3.82 percent in October 2022 to -4.08 percent in November 2022.



Restaurant and hotels, with weight 6.10 percent, **declined** by 4.86 percentage points from 48.80 percent in October 2022 to 43.94 percent in November 2022.

1.3 Monthly Consumer Price Inflation: Detailed By Main COICOP² Headings

Upward Movers



Clothing and footwear, with weight 7.70 percent, **increased** from 2.22 percent in October 2022 to 4.42 percent in November 2022; the inflation rate increased by 2.20 percentage points.



Furniture, household equipment and household maintenance, with weight 5.60 percent, **increased** from 5.90 percent in October 2022 to 5.92 percent in November 2022; the inflation rate increased by 0.02 percentage point.



Health, with weight 7.60 percent, **increased** from 1.82 percent in October 2022 to 2.75 percent in November 2022; the inflation rate increased by 0.93 percentage point.



Communication, with weight 4.70 percent, **increased** from 0.36 percent in October 2022 to 0.86 percent in November 2022; the inflation rate increased by 0.50 percentage point.



Miscellaneous goods and services, with weight 3.90 percent **increased** from 4.24 percent in October 2022 to 4.55 percent in November 2022; the inflation rate increased by 0.31 percentage point.

² Classification of Individual Consumption by Purpose

Downward Movers



Food and non-alcoholic beverages, with weight 40.30 percent, **declined** by 1.66 percentage points from 3.58 percent in October 2022 to 1.92 percent in November 2022.



Alcoholic beverages, tobacco and narcotics, with weight 1.00 percent **declined** by 0.52 percentage point from 4.49 percent in October 2022 to 3.97 percent in November 2022.



Housing, water, electricity, gas and other fuels, with weight 8.90 percent, **declined** by 0.56 percentage point from 1.08 percent in October 2022 to 0.52 percent in November 2022..



Transport, with weight 8.60 percent **declined** by 9.65 percentage point from 9.08 percent in October 2022 to -0.57 percent in November 2022.



Recreation and culture, with weight 2.60 percent, **declined** by 1.79 percentage point from 3.62 percent in October 2022 to 1.83 percent in November 2022.



Restaurant and hotels, with weight 6.10 percent, **declined** by 6.65 percentage points from 4.99 percent in October 2022 to -1.66 percent in November 2022.

Non-Movers



For Education services, with weight 3.10 percent, **no change** was noticed between October, 2022 and November, 2022.

Table 1 below shows the National CPI of the months of November, 2021 and November, 2022; as well as the 12 months change in the CPI for the main COICOP functions.

Table 1: National CPI and rates of inflation by main COICOP functions (December 2021=100)

COICOP	WEIGHT	Nov-21	Aug-22	Sept-22	Oct-22	Nov-22	Monthly Inflation	3 Months Change Inflation	12 Months Inflation
		Month Previous Year-	Month m-2 for Current Year	Month m-1 for Current Year	Month m for Current Year	Month m for Current Year			
Food and Non-Alcoholic Beverages	40.3	99.21	132.01	134.97	139.80	142.49	1.92	7.94	43.62
Alcoholic Beverages, Tobacco and Narcotics	1.0	99.17	113.55	103.16	107.79	112.07	3.97	-1.30	13.01
Clothing and Footwear	7.7	98.38	107.79	109.41	111.84	116.78	4.42	8.34	18.70
Housing, Water, Electricity, Gas and Other Fuels	8.9	96.05	112.45	115.94	117.19	117.80	0.52	4.76	22.64
Furniture, Household Equipment and Household Maintenance	5.6	98.16	131.18	132.78	140.62	148.95	5.92	13.55	51.74
Health	7.6	94.92	110.87	116.62	118.74	122.01	2.75	10.05	28.54
Transport	8.6	99.71	124.67	129.22	140.95	140.14	-0.57	12.41	40.55
Communication	4.7	93.83	101.39	102.91	103.28	104.17	0.86	2.74	11.02
Recreation and Culture	2.6	94.80	124.23	125.29	129.83	132.20	1.83	6.42	39.45
Education	3.1	94.02	96.81	90.18	90.18	90.18	0.00	-6.85	-4.08
Restaurant and Hotels	6.1	95.35	131.91	132.93	139.56	137.25	-1.66	4.05	43.94
Miscellaneous Goods & Services	3.9	100.74	121.32	121.97	127.14	132.92	4.55	9.56	31.94
All Items	100.0	97.92	122.79	125.20	129.84	132.24	1.85	7.70	35.05

2.0 NOVEMBER 2022 CONSUMER PRICE INFLATION: DETAILED BY REGIONS

The National monthly CPI increased from 129.84 in October 2022 to 132.24 in November 2022, resulting to 1.85 percent inflation this month.

Similarly, the national yearly CPI increased from 97.92 in November 2021 to 132.24 in November 2022 causing a year-on-year (YoY) inflation of 35.05 percent for November 2022; indicating an upwards trend compared to 32.98 percent in October 2022. Three regions show upwards movement: Eastern region from 30.74 percent in October 2022 to 33.22 percent in November 2022, Northern region

from 25.88 percent in October 2022 to 28.34 percent in November 2022 and Southern region from 37.08 percent in October 2022 to 41.09 percent in November 2022. Only Western region declined from 32.22 percent in October 2022 to 32.02 percent in November 2022.

As the price index for the Northwest region was launched with the rebased CPI (December 2021=100), it will only be possible to publish a 12-month percentage change from January 2023.

Table 1.1: National and Regional Year-on-Year and Monthly Inflation rates

December 2021=100												
Month	National		Western Area		Eastern Region		Southern region		Northern Region		North-west Region	
	Year-On-Year	Monthly	Year-On-Year	Monthly	Year-On-Year	Monthly	Year-On-Year	Monthly	Year-On-Year	Monthly	Year-On-Year	Monthly
Oct, 2022	32.98	3.71	32.22	6.75	30.74	3.16	37.08	1.36	25.88	-1.56	-	1.40
Nov, 2022	35.05	1.85	32.02	0.51	33.22	2.08	41.09	4.04	28.34	1.01	-	4.99

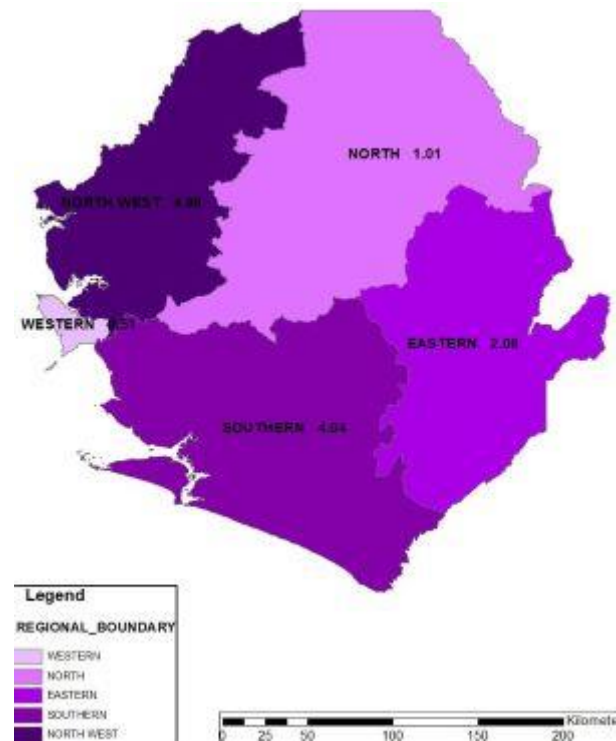
It is observed from the table above that the year-on-year inflation rates for the Southern region is the highest and is above the national estimate for the month of November 2022; while Eastern, Western and Northern regions' estimates are below.

The figures below illustrate the yearly (1A) and monthly (1B) inflation rates at regional levels.

Figure 1A: Regional Year-on-Year inflation rates



Figure 1B: Regional Month-on-Month inflation rates



3.0 FOOD³ AND NON-FOOD⁴ COMPONENTS

Food and non-alcoholic items inflation increased by 3.48 percentage points from 40.14 percent in October 2022 to 43.62 percent in November 2022. In this division, food inflation increased by 3.47 percentage points from 39.65 percent in October 2022, while the non-alcoholic beverages inflation also increased by 2.81 percentage points from 58.03 percent in October 2022.

In the Food sub-division (Group), the following were among the key increases: local medium grain rice by 5 percent, imported broken rice by 7 percent, loaf of white bread by 12 percent, macaroni by 20 percent, traditional bred live chicken by 7 percent, beef liver by 8 percent, chicken feet (1kg) imported by 17 percent, luncheon meat by 13 percent, bonga/awefu by 7 percent, egg traditional by 9 percent, palm kernel oil by 16 percent, oranges by 12 percent, cassava leaves by 19 percent, krain-krain by 13 percent, fresh okra by 15 percent, jackatoe by 12 percent, green cabbage by 17 percent, garlic by 14 percent, yellow plantain by 38 percent, yam by 19 percent, fresh tora by 16 percent, green, yellow and red pepper by 5 percent, tea by 8 percent, etc.

The non-food category hits an inflation of 29.38 percent in November 2022 from 28.41 percent in October 2022; a 0.97 percentage point increase. In this component, six divisions went up, five went down. Noticeable increases were observed in Furniture, Household Equipment and Household Maintenance by 5.87 percentage points; Alcoholic Beverages, Tobacco and Narcotics by 5.05 percentage points and Clothing and Footwear by 5.01 percentage points.

Table 1.2: 2022 Food and Non-food inflation rates

Items	Jan	Feb	Mar	April	May	June	July	Aug	Sept	Oct	Nov	Dec
Food and Non-alcoholic Beverages	15.68	17.09	22.96	23.00	26.29	28.49	30.58	31.60	35.20	40.14	43.62	
Non-food	17.60	18.42	21.86	22.92	24.84	28.66	29.61	26.58	25.37	28.41	29.38	

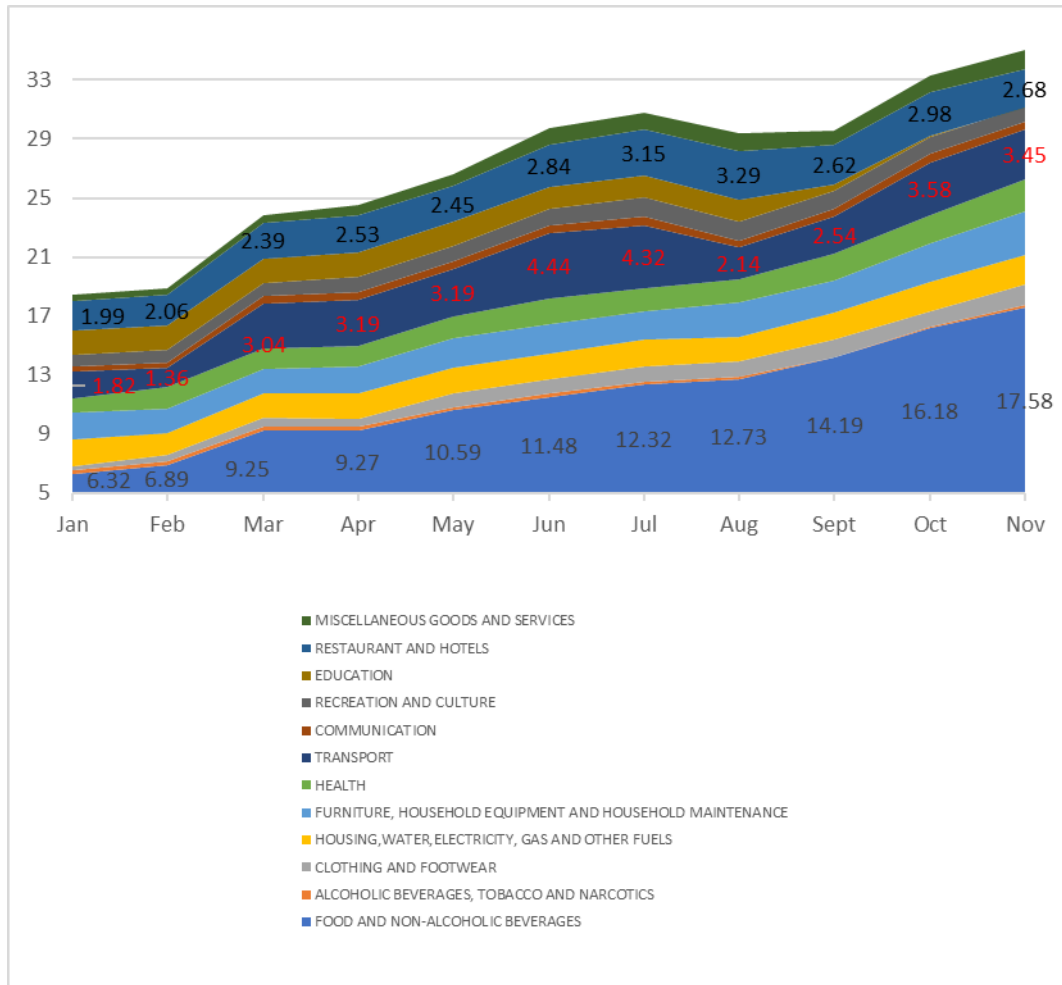
³ Food and Non-Alcoholic Beverages

⁴ All other main COICOP Functions/divisions excluding Food and Non-Alcoholic Beverages

4.0 CONTRIBUTIONS OF COICOP DIVISIONS TO ANNUAL INFLATION RATE (YoY)

Annual National Consumer Price Inflation (year-on-year) for November 2022 stood at 35.05 percent, up by 2.07 percentage points from 32.98 percent in October 2022. Of the 35.05 percent, the following COICOP divisions made the most impacts: Food and Non-alcoholic beverages (17.58), Transport (3.45) and Restaurants and Hotels (2.68).

Figure 2: Contributions of the COICOP divisions to inflation rate

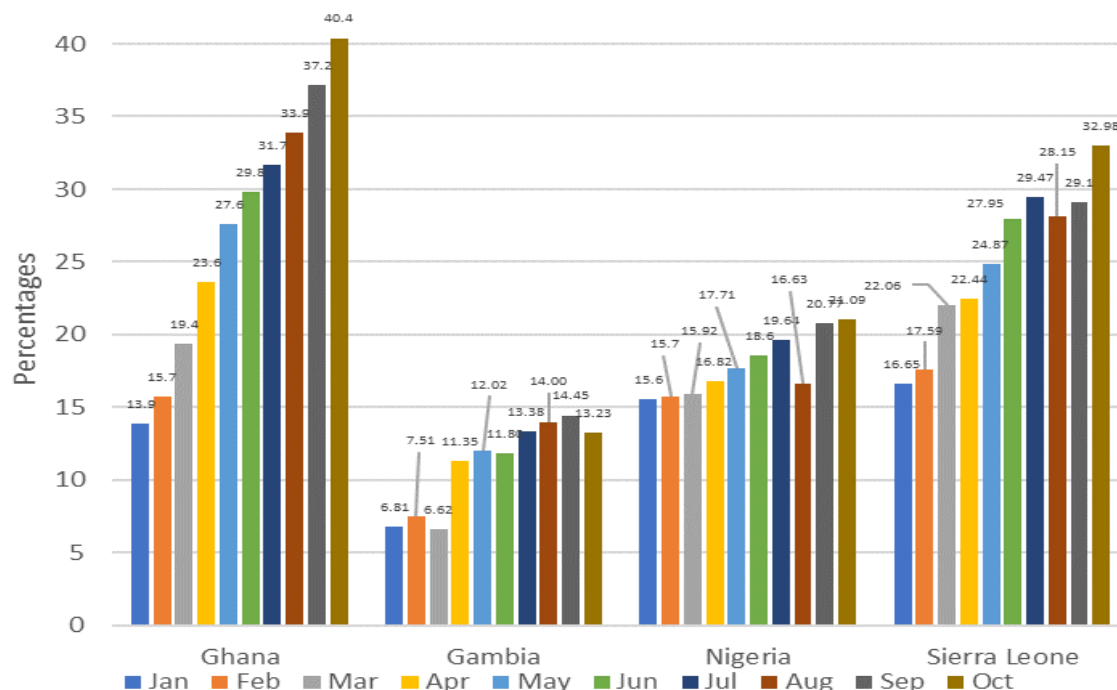


Concluding Note: We noted a sustained increase in the year-on-year national inflation rate in November; which is above the estimates of the Western, Eastern and Northern regions' but below the Southern region's estimate. Food and non-alcoholic beverages continues to make the most impact on national inflation and is increasing every month; with Transport as the second key driver.

5.0 CPI COMPARISON FOR SELECTED ECOWAS MEMBER STATES

All selected countries, except The Gambia, reported increased inflation rates for the month of October 2022. The inflation estimates for all countries this year indicate upwards trend; that is, general price increases. All countries are now reporting double digit inflation, with Sierra Leone and Ghana reporting above 30 percent inflation rate.

Figure 3: Recent inflation rates of selected ECOWAS countries



NOTE: The National CPI measures the change in prices, on average, from month to month, of the goods and services bought by households, in Freetown, Bo, Kenema, Kono, Makeni, Port Loko-Kambia and include all expenditure groups. Prices are collected for least 440 items. All prices collected are the prevailing retail market prices from six (6) markets in Freetown and, three (3) Markets each in Bo, Kenema, Kono, Makeni, Port Loko-Kambia and for weekly prices and other outlets for monthly items whose prices are less likely to fluctuate rapidly. We are using the Modified Laspeyres formula to compute indices according to the Classification of Individual Consumption by Purpose (COICOP) with 12 functions.

Sierra Leone has recently rebased the CPI to December 2021, increased the number of items in the basket and expanded the coverage to North-West region.

Table 2: National and Western region CPI, Year-on-Year and Monthly Inflation Rates

	National CPI (December 2021=100)			Western Area/Freetown CPI (December 2021=100)		
	CPI	Year-on- Year % Change	Monthly Change	CPI	Year-on –Year % Change	Monthly Change
2018						
January	59.99	14.68	1.68	60.19	13.25	1.24
February	60.78	14.38	1.32	60.81	12.63	1.03
March	61.53	14.9	1.23	61.38	12.75	0.94
April	62.13	15.14	0.98	61.76	12.5	0.62
May	62.94	16.02	1.3	62.59	13.78	1.34
June	63.92	16.58	1.56	63.47	14.32	1.41
July	65.19	17.71	1.99	65.07	16.32	2.52
August	66.06	18.18	1.33	66.39	17.78	2.03
September	66.34	17.77	0.42	66.08	16.13	-0.47
October	65.86	16.05	-0.72	65.34	14.07	-1.12
November	67.60	16.55	2.64	67.39	15.26	3.14
December	67.40	14.24	-0.3	66.61	12.04	-1.16
Average	64.15	16.02	1.12	63.92	14.24	0.96
2019						
January	68.60	14.35	1.78	67.09	11.46	0.72
February	69.34	14.08	1.08	69.30	13.96	3.29
March	70.62	14.77	1.85	70.56	14.96	1.82
April	72.42	16.56	2.55	72.03	16.63	2.08
May	72.36	14.97	-0.08	71.61	14.41	-0.58
June	73.28	14.64	1.27	72.42	14.10	1.13
July	74.90	14.89	2.21	73.01	12.20	0.81
August	76.26	15.44	1.82	75.30	13.42	3.14
September	76.40	15.16	0.18	74.40	12.59	-1.20
October	76.30	15.85	-0.13	75.76	15.95	1.83
November	76.45	13.09	0.20	77.94	15.66	2.88
December	76.77	13.90	0.42	79.11	18.77	1.50
Average	73.64	14.81	1.10	73.21	14.51	1.45
2020						
January	77.93	13.60	1.51	80.57	20.09	1.85
February	79.53	14.70	2.05	82.33	18.8	2.18
March	81.61	15.56	2.62	83.56	18.42	1.49
April	83.34	15.08	2.12	84.95	17.94	1.66
May	83.56	15.48	0.26	85.93	20.00	1.15
June	83.80	14.36	0.29	84.94	17.29	-1.15
July	84.86	13.30	1.26	86.41	18.35	1.73
August	86.42	13.32	1.84	87.49	16.19	1.25
September	86.87	13.70	0.52	88.39	18.80	1.03
October	85.24	11.72	-1.88	85.64	13.04	-3.11
November	84.58	10.63	-0.77	85.46	9.65	-0.21
December	84.79	10.45	0.25	86.09	8.82	0.74
Average	83.54	13.49	0.84	85.15	16.45	0.72
2021						
January	86.89	11.50	2.48	88.05	9.28	2.28
February	88.18	10.88	1.48	88.55	7.55	0.57
March	88.92	8.96	0.84	90.16	7.90	1.82
April	91.35	9.61	2.73	91.84	8.11	1.86
May	91.75	9.80	0.44	92.56	7.72	0.78
June	92.35	10.20	0.65	93.58	10.17	1.10
July	93.77	10.50	1.54	93.96	8.74	0.41
August	95.82	10.88	2.19	95.87	9.58	2.03
September	96.98	11.64	1.21	96.83	9.55	1.00
October	97.64	14.55	0.68	98.1	14.55	1.31
November	97.92	15.77	0.29	98.75	15.55	0.66
December	100.00	17.94	2.12	100.00	16.16	1.27
Average	93.46	11.85	1.39	94.02	10.41	1.26
2022						
January	101.36	16.65	1.36	100.57	14.22	0.57
February	103.69	17.59	2.30	102.76	16.05	2.18
March	108.54	22.06	4.68	108.21	20.02	5.30
April	111.85	22.44	3.05	110.28	20.08	1.91
May	114.57	24.87	2.43	112.97	22.05	2.44
June	118.16	27.95	3.13	117.13	25.17	3.68
July	121.40	29.47	2.74	119.38	27.05	1.92
August	122.79	28.15	1.14	120.23	25.41	0.71
September	125.20	29.10	1.96	121.51	25.49	1.06
October	129.84	32.98	3.71	129.71	32.22	6.75
November	132.24	35.05	1.85	130.37	31.94	0.51

Table 3: National Consumer Price Index by Main COICOP Groups (December 2021=100)

	Food and Non-Alcoholic Beverages	Alcoholic Beverages, Tobacco and Narcotics	Clothing and Footwear	Housing, Water, Electricity, Gas and Other Fuels	Furniture, Household Equipment and Household Maintenance	Health	Transport	Communication	Recreation and Culture	Education	Restaurant and Hotels	Miscellaneous Goods and Services	All Items
Weight	40.3	1	7.7	8.9	5.6	7.6	8.6	4.7	2.6	3.1	6.1	3.9	100.00
Jan-18	62.39	59.22	60.1	67.01	55.75	49.49	57.55	85.73	66.92	42.61	49.14	70.07	59.99
Feb-18	63.17	60.37	60.78	67.77	56.85	50.34	57.72	88.23	67.69	42.99	50.45	71.01	60.78
Mar-18	63.81	61.5	61.40	68.29	58.25	51.33	58.13	88.47	69.08	43.66	51.77	72.19	61.53
Apr-18	64.36	62.21	61.70	68.71	58.66	52.32	58.41	88.98	69.85	44.18	52.81	73.55	62.13
May-18	65.37	63.01	62.52	69.63	59.04	52.83	58.81	89.28	70.5	44.33	53.63	74.46	62.94
Jun-18	66.57	64.23	63.37	70.40	60.03	53.63	59.14	89.83	71.03	44.78	54.71	75.49	63.92
Jul-18	67.27	65.22	63.93	74.98	61.36	54.45	63.82	90.42	71.52	45.09	56.13	75.8	65.19
Aug-18	68.49	66.1	65.51	76.73	64.78	53.94	65.08	74.5	71.6	45.58	58.20	74.49	66.06
Sep-18	69.1	67.7	65.7	77.36	63.54	54.54	66.27	75.67	73.85	34.69	57.70	77.42	66.34
Oct-18	68.08	65.61	66.36	76.55	63.95	54.97	66.46	76.02	73.15	34.69	62.07	74.76	65.86
Nov-18	70.08	69.56	68.46	78.62	65.09	55.9	67.43	76.51	74.89	34.9	59.26	78.25	67.6
Dec-18	69.05	67.97	67.71	78.94	63.67	59.13	69.06	74.66	72.67	34.9	66.37	73.32	67.4
Jan-19	68.98	70.55	74.4	79.57	65.8	60.83	68.41	75.11	75.4	35.02	64.13	78.55	68.6
Feb-19	69.8	71.8	73.94	79.41	69.37	61.03	68.04	82.98	81.02	35.22	64.28	80.03	69.34
Mar-19	71.65	72.51	75.53	80.42	70.43	61.87	68.19	82.23	77.84	35.4	65.72	80.64	70.62
Apr-19	74.6	76	76.59	82.26	72.23	60.73	69.38	82.29	79.49	35.74	65.28	83.48	72.42
May-19	70.28	74.52	79.01	80.27	77.96	69.97	71.01	91.25	76.49	38.98	64	86.16	72.36
Jun-19	70.99	74.67	80.72	80.13	80.41	73	71.56	92.15	74.72	35.45	64.45	85.49	73.28
Jul-19	72.43	76.29	82.46	82.37	81.22	74.93	75.33	85.33	75.56	35.45	67.48	88.26	74.9
Aug-19	74.16	77.71	79.73	82.5	78.59	82.93	73.6	88.41	73.81	35.45	67.06	83.05	76.26
Sep-19	74.84	76.39	79.9	82.89	79.75	79.76	75.46	80.55	73.49	35.45	75.35	86.23	76.4
Oct-19	74.26	76.17	79.62	84.18	80.15	80.05	75.48	80.55	73.37	35.45	75.06	86.44	76.3
Nov-19	72.62	73.03	79.47	85.78	76.99	82.49	75.33	80.55	75.1	59.80	73.09	84.95	76.45
Dec-19	72.77	75.82	78.39	87.14	77.83	82.75	76.98	80.54	74.89	59.80	73.09	84.8	76.77
Jan-20	74.12	78.14	80.46	87.8	77.77	82.4	80.57	80.53	75.27	59.80	77.79	87.01	77.93
Feb-20	75.6	74.67	81.41	88.57	75.13	89.23	80.99	84.64	75.53	59.80	77.18	85.77	79.53
Mar-20	78.72	75.82	83.33	86.99	76.27	91.85	80.12	89.29	77.89	59.80	78.96	89.3	81.61
Apr-20	82.46	77.23	84.58	83.89	77.77	92.50	79.16	89.3	78.61	59.80	79.99	90.43	83.34
May-20	81.95	77.83	85.57	84.84	78.19	93.49	79.43	90.06	78.7	59.80	81.85	91.71	83.56
Jun-20	83.01	79.03	87.07	84.80	79.46	88.90	82.3	90.97	79.16	59.80	82.91	93.07	83.8
Jul-20	84.94	79.08	88.5	84.81	80.16	89.19	83.31	90.07	80.40	59.80	83.09	90.84	84.86
Aug-20	87.31	78.99	90.07	84.71	81.00	90.86	82.94	92.30	80.75	59.80	82.41	92.97	86.42
Sept-20	88.12	78.05	90.63	85.77	81.90	90.73	82.27	90.70	81.11	59.80	79.44	93.14	86.87
Oct-20	84.42	77.01	94.15	83.84	81.97	90.56	81.09	89.99	80.78	59.80	79.08	94.13	85.24
Nov-20	83.49	75.86	93.3	82.71	81.68	91.37	80.89	90.26	79.16	59.80	76.71	92.3	84.58
Dec-20	83.75	80.38	93.4	83.70	82.97	88.91	82.09	93.31	78.43	65.21	76.66	90.24	84.79
Jan-21	88.12	80.29	92.83	84.33	82.56	89.69	81.64	93.65	78.62	65.21	76.7	90.99	86.89
Feb-21	90.41	80.84	91.95	88.41	85.01	86.73	84.93	93.87	79.03	65.21	78.43	92.36	88.18
Mar-21	90.88	83.38	90.61	89.53	85.15	90.14	85.10	92.19	79.02	65.21	78.01	92.22	88.92
Apr-21	95.36	87.89	93.51	90.09	86.13	89.45	85.5	92.19	79.36	65.21	79.63	91.61	91.35
May-21	96.34	87.34	91.12	90.31	86.43	90.08	84.89	92.19	79.78	65.21	84.02	92.18	91.75
Jun-21	97.22	88.65	92.22	91.89	88.29	89.09	85.32	92.19	80.39	65.56	84.31	89.92	92.35
Jul-21	98.03	94.51	93.68	92.22	92.84	89.96	92.35	92.2	81.54	65.56	85.34	91.87	93.77
Aug-21	100.31	98.11	95.31	94.64	92.70	91.46	99.61	92.22	82.67	65.56	85.67	92.41	95.82
Sept-21	99.83	100.05	95.13	95.87	95.75	94.21	99.45	92.21	86.21	78.23	93.04	97.60	96.98
Oct-21	99.76	99.84	98.37	95.71	96.40	94.46	99.17	92.22	90.18	86.86	93.79	99.51	97.64
Nov-21	99.21	99.17	98.38	96.05	98.16	94.92	99.71	93.83	94.80	94.02	95.35	100.74	97.92
Dec-21	100.00	100.00	100.00	100.00	100.00	100.00	100.00	100.00	100.00	100.00	100.00	100.00	100.00
Jan-22	101.94	99.63	96.04	101.08	109.54	101.29	99.13	100.17	102.54	100.00	101.72	101.51	101.36
Feb-22	105.86	98.85	97.29	103.12	110.56	103.13	98.48	100.88	104.85	100.00	104.92	102.84	103.69
Mar-22	111.75	103.03	98.32	105.97	109.63	107.18	115.52	101.32	107.26	100.00	108.62	104.71	108.54
Apr-22	117.29	104.39	100.38	107.21	114.59	105.64	117.57	102.42	109.12	100.00	112.64	107.62	111.85
May-22	121.67	105.38	102.14	107.96	116.93	108.31	116.74	101.88	112.45	100.00	117.79	110.36	114.57
Jun-22	124.92	109.68	104.38	109.41	119.44	109.47	129.86	103.10	116.08	96.81	123.56	115.00	118.16
Jul-22	128.01	111.18	106.58	111.54	124.78	107.54	139.33	102.83	122.51	96.81	129.40	118.73	121.40
Aug-22	132.01	113.55	107.79	112.45	131.18	110.87	124.67	101.39	124.23	96.81	131.91	121.32	122.79
Sept-22	134.97	103.16	109.41	115.94	132.78	116.62	129.22	102.91	125.29	90.18	132.93	121.97	125.20
Oct-22	139.80	107.79	111.84	117.19	140.62	118.74	140.95	103.28	129.83	90.18	139.56	127.14	129.84
Nov-22	142.49	112.07	116.78	117.8	148.95	122.01	140.14	104.17	132.2	90.18	137.25	132.92	132.24