



CONSUMER PRICE INDEX DECEMBER 2022 PRESS RELEASE

Released: 17th January, 2023 @ 12: 00 noon



CONTACT PERSONS:

(1) Mwaluma Andrew Bryma GEGBE, MA, MSc

Director of National Accounts and
Economic Statistics Division
Statistics Sierra Leone (Stats SL)
Mobile: +23279442430/ +23288000898
Email: mwaluma.gegbe@statistics.sl
Skype: mwaluma.gegbe

(2) Isata M. ALLIEU-KEIKURA, MSc

Principal Statistician and Head,
Price and Labour Statistics Section
National Accounts and Economic Statistics
Division, Statistics Sierra Leone (Stats SL)
Mobile: +23276580842/ +23234580842
Email: isata.allieu-keikura@statistics.sl

Reviewed by

Andrew Bob JOHNNY, MSc

Deputy Statistician General
Statistics Sierra Leone (Stats SL)
Email: andrew.johnny@statistics.sl

Approved for release by:

Prof. Osman SANKOH, DSc, COR

Statistician General & CEO
Statistics Sierra Leone (Stats SL)
Email: osman.sankoh@statistics.sl
Skype: oasankoh

17th January, 2023

CONTENTS

CONTENTS	i
LIST OF TABLES	ii
LIST OF FIGURES.....	ii
1.1 Headline Inflation Rates	3
1.2 Annual Year-On-Year (YOY) Consumer Price Inflation: Detailed by Main COICOP Headings.....	3
1.3 Monthly Consumer Price Inflation: Detailed By Main COICOP Headings.....	4
2.0 DECEMBER 2022 CONSUMER PRICE INFLATION: DETAILED BY REGIONS	4
3.0 FOOD AND NON-FOOD COMPONENTS.....	7
4.0 CONTRIBUTIONS OF COICOP DIVISIONS TO ANNUAL INFLATION RATE (YoY).....	7
5.0 CPI COMPARISON FOR SELECTED ECOWAS MEMBER STATES	8

LIST OF TABLES

Table 1:	National CPI and rates of inflation by main COICOP functions (December 2021=100) ...	4
Table 1.1:	National and Regional Year-on-Year and Monthly Inflation rates	6
Table 1.2:	2022 Food and Non-food inflation rates	7
Table 2:	National and Western region CPI, Year-on-Year and Monthly Inflation Rates.....	9
Table 3:	National Consumer Price Index by Main COICOP Groups (December 2021=100)	10

LIST OF FIGURES

Figure 1a:	Year-on-Year Percentage Changes in the CPI.....	5
Figure 1b:	Monthly Percentage Changes in the CPI.....	5
Figure 2:	Contributions of the COICOP divisions to inflation rate.....	7
Figure 3:	Recent inflation rates for selected ECOWAS countries.....	8

1.0 KEY FINDINGS

1.1 Headline Inflation Rates

- Annual National Consumer Price Inflation (year-on-year) for December 2022 stood at 37.09 percent, **up by 2.04 percentage points** from 35.05 percent in November 2022.
- The monthly consumer price inflation for December 2022 is 3.67 percent; **up by 1.82 percentage points** from 1.85 percent in November, 2022.
- Annual National Food and non-alcoholic beverages inflation for December 2022 is 46.70 percent, **up by 3.08 percentage points** from 43.62 percent in November, 2022.
- National inflation for Non-food is 30.60 percent in December 2022 from 29.38 percent in November; **up by 1.22 percentage points**.

1.2 Annual Year-On-Year (YOY) Consumer Price Inflation: Detailed by Main COICOP¹ Headings

Upward Movers



Food and non-alcoholic beverages, with weight 40.30 percent, **increased** from 43.62 percent in November 2022 to 46.70 percent in December 2022; the inflation rate increased by 3.08 percentage points year-on-year.



Alcoholic beverages, tobacco and narcotics, with weight

1.00 percent **increased** from 13.01 percent in November 2022 to 14.84 percent in December 2022; the inflation rate increased by 1.83 percentage points year-on-year.



Clothing and footwear, with weight 7.70 percent, **increased** from 18.70 percent in November 2022 to 21.52 percent in December 2022; the inflation rate increased by 2.82 percentage points.



Housing, water, electricity, gas and other fuels, with weight 8.90 percent, **increased** from 22.64 percent in November 2022 to 30.89 percent in December 2022; the inflation rate increased by 8.25 percentage points year-on-year.



Furniture, household equipment and household maintenance, with weight 5.60 percent, **increased** from 51.74 percent in November 2022 to 54.10 percent in December 2022; the inflation rate increased by 2.36 percentage points year-on-year.



Transport, with weight 8.60 percent, **increased** from 40.55 percent in November 2022 to 44.89 percent in December 2022; the inflation rate increased by 4.34 percentage points.



Miscellaneous goods and services, with weight 3.90 percent, **increased** from 31.94 percent in November 2022 to 38.39 percent in December 2022; the inflation rate increased by 6.45 percentage points year-on-year.

¹ Classification of Individual Consumption by Purpose

Downward Movers



Health, with weight 7.60 percent, **declined** by 1.56 percentage points from 28.54 percent in November 2022 to 26.98 percent in December 2022.



Communication, with weight 4.70 percent, **declined** by 7.06 percentage points from 11.02 percent in November 2022 to 3.96 percent in December 2022.



Recreation and culture, with weight 2.60 percent, **declined** by 4.90 percentage points from 39.45 percent in November 2022 to 34.55 percent in December 2022.



Education services, with weight 3.10 percent, **declined** by 5.74 percentage points from -4.08 percent in November 2022 to -9.82 percent in December 2022.



Restaurant and hotels, with weight 6.10 percent, **declined** by 2.20 percentage points from 43.94 percent in November 2022 to 41.74 percent in December 2022.

1.3 Monthly Consumer Price Inflation: Detailed By Main COICOP² Headings

Upward Movers



Food and non-alcoholic beverages, with weight 40.30 percent, **increased** from 1.92 percent in November 2022 to 2.95 percent in December 2022; the inflation rate increased by 1.03 percentage points year-on-year.



Housing, water, electricity, gas and other fuels, with weight 8.90 percent, **increased** from 0.52 percent in November 2022 to 11.11 percent in December 2022; the inflation rate increased by 10.59 percentage points year-on-year.



Health, with weight 7.60 percent, **increased** from 2.75 percent in November 2022 to 4.07 percent in December 2022; the inflation rate increased by 1.32 percentage points year-on-year.



Transport, with weight 8.60 percent, **increased** from -0.57 percent in November 2022 to 3.39 percent in December 2022; the inflation rate increased by 3.96 percentage points.



Restaurant and hotels, with weight 6.10 percent, **increased** from -1.66 percent in November 2022 to 3.27 percent in December 2022; the inflation rate increased by 4.93 percentage points.

² Classification of Individual Consumption by Purpose

Downward Movers



Alcoholic beverages, tobacco and narcotics, with weight 1.00 percent **declined** by 1.50 percentage points from 3.97 percent in November 2022 to 2.47 percent in December 2022.



Clothing and footwear, with weight 7.70 percent, **declined** by 0.36 percentage point from 4.42 percent in November 2022 to 4.06 percent in December 2022.



Furniture, household equipment and household maintenance, with weight 5.60 percent, **declined** by 2.46 percentage points from 5.92 percent in November 2022 to 3.46 percent in December 2022.



Communication, with weight 4.70 percent, **declined** by 1.06 percentage point from 0.86 percent in November 2022 to -0.20 percent in December 2022.



Recreation and culture, with weight 2.60 percent, **declined** by 0.05 percentage point from 1.83 percent in November 2022 to 1.78 percent in December 2022.



Miscellaneous goods and services, with weight 3.90 percent **declined** by 0.43 percentage point from 4.55 percent in November 2022 to 4.12 percent in December 2022.

Non-Movers



For Education services, with weight 3.10 percent, **no change** was noticed between November, 2022 and December, 2022.

Table 1 below shows the National CPI of the months of December, 2021 and December, 2022; as well as the 12 months change in the CPI for the main COICOP functions.

Table 1: National CPI and rates of inflation by main COICOP functions (December 2021=100)

COICOP	WEIGHT	Dec-21	Sept-22	Oct-22	Nov-22	Dec-22	Monthly Inflation	3 Months Change Inflation	12 Months Inflation
		Month Year- Previous	Month m-3 for Current Year	Month m-2 for Current Year	Month m-1 for Current Year	Month m for Current Year			
Food and Non-Alcoholic Beverages	40.3	100.00	134.97	139.80	142.49	146.70	2.95	8.69	46.70
Alcoholic Beverages, Tobacco and Narcotics	1.0	100.00	103.16	107.79	112.07	114.84	2.47	11.32	14.84
Clothing and Footwear	7.7	100.00	109.41	111.84	116.78	121.52	4.06	11.07	21.52
Housing, Water, Electricity, Gas and Other Fuels	8.9	100.00	115.94	117.19	117.80	130.89	11.11	12.89	30.89
Furniture, Household Equipment and Household Maintenance	5.6	100.00	132.78	140.62	148.95	154.10	3.46	16.06	54.10
Health	7.6	100.00	116.62	118.74	122.01	126.98	4.07	8.88	26.98
Transport	8.6	100.00	129.22	140.95	140.14	144.89	3.39	12.13	44.89
Communication	4.7	100.00	102.91	103.28	104.17	103.96	-0.20	1.02	3.96
Recreation and Culture	2.6	100.00	125.29	129.83	132.20	134.55	1.78	7.39	34.55
Education	3.1	100.00	90.18	90.18	90.18	90.18	0.00	0.00	-9.82
Restaurant and Hotels	6.1	100.00	132.93	139.56	137.25	141.74	3.27	6.63	41.74
Miscellaneous Goods & Services	3.9	100.00	121.97	127.14	132.92	138.39	4.12	13.46	38.39
All Items	100.0	100.00	125.20	129.84	132.24	137.09	3.67	9.50	37.09

2.0 DECEMBER 2022 CONSUMER PRICE INFLATION: DETAILED BY REGIONS

The National monthly CPI increased from 132.24 in November 2022 to 137.09 in December 2022, resulting to 3.67 percent inflation this month.

Similarly, the national yearly CPI increased from 100.00 in December 2021 to 137.09 in December 2022 causing a year-on-year (YoY) inflation of 37.09 percent for December 2022; indicating an upwards trend compared to 35.05 percent in November 2022. Three regions show upwards movement: Eastern

region from 33.22 percent in November 2022 to 36.29 percent in December 2022, Northern region from 28.34 percent in November 2022 to 31.45 percent in December 2022 and Western region from 32.02 percent in November 2022 to 35.93 percent in December 2022. Only Southern region declined from 41.09 percent in November 2022 to 38.20 percent in December 2022. The Northwest region has registered its first 12-month inflation since the base year index was computed in December 2021.

Table 1.1: National and Regional Year-on-Year and Monthly Inflation rates

December 2021=100												
Month	National		Western Area		Eastern Region		Southern region		Northern Region		North-west Region	
	Year-On-Year	Monthly	Year-On-Year	Monthly	Year-On-Year	Monthly	Year-On-Year	Monthly	Year-On-Year	Monthly	Year-On-Year	Monthly
Nov, 2022	35.05	1.85	32.02	0.51	33.22	2.08	41.09	4.04	28.34	1.01	-	4.99
Dec, 2022	37.09	3.67	35.93	4.26	36.29	2.14	38.20	1.54	31.45	6.43	47.31	3.02

It is observed from the table above that the year-on-year inflation rates for the Southern region declined, but is above the national estimate for the month of December 2022; while Eastern, Western and Northern regions' estimates are below. The first ever year-on-year inflation rates for North-west region has been computed for December 2022 and is the highest in the country.

The figures below illustrate the yearly (1A) and monthly (1B) inflation rates at regional levels.

Figure 1A: Regional Year-on-Year inflation rates

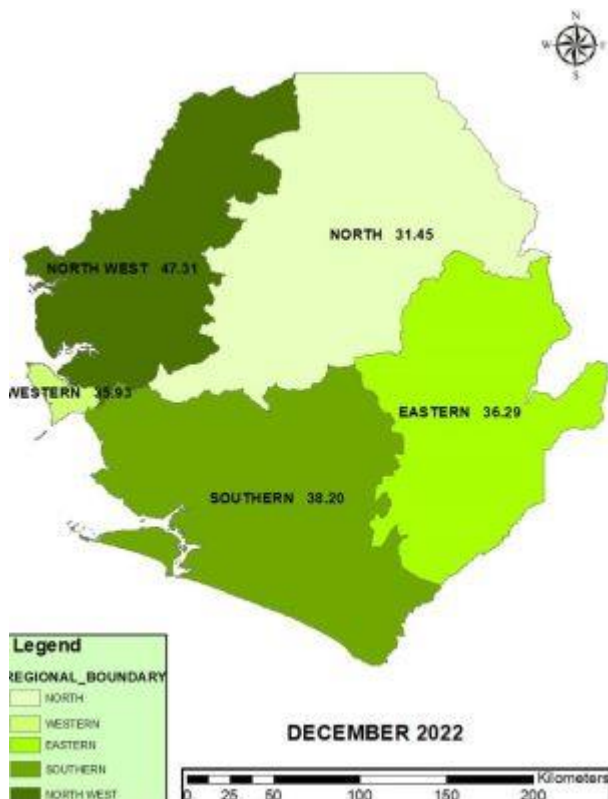
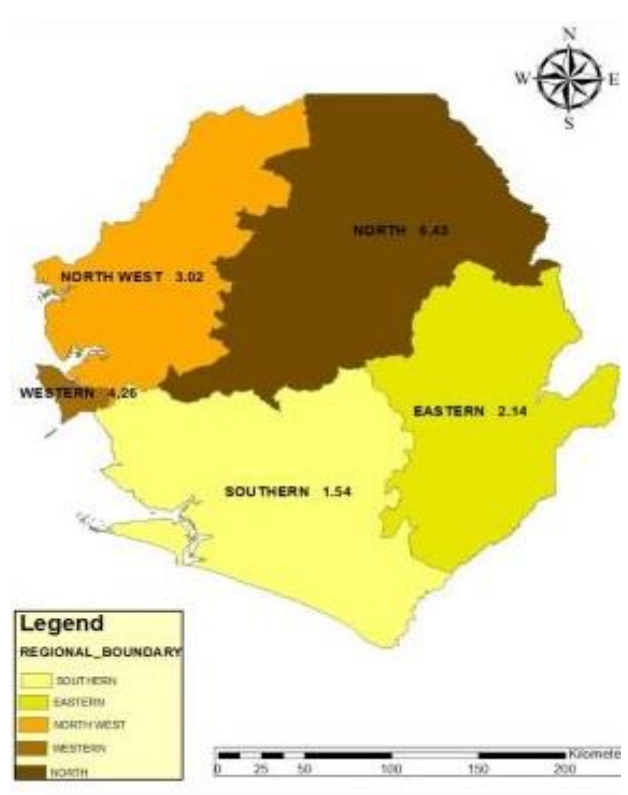


Figure 1B: Regional Month-on-Month inflation rates



3.0 FOOD³ AND NON-FOOD⁴ COMPONENTS

Food and non-alcoholic items inflation increased by 3.08 percentage points from 43.62 percent in November 2022 to 46.70 percent in December 2022. In this division, food inflation increased by 3.05 percentage points from 43.12 percent in November 2022, while the non-alcoholic beverages inflation also increased by 0.67 percentage point from 60.84 percent in November 2022.

In the Food sub-division (Group), higher increases are observed among imported food items and vegetables because of the seasonality. The following were among the key increases: wheat flour by 18 percent, butter biscuit by 10 percent, couscous by 10 percent, Macaroni by 11 percent, beef with bones by 9 percent, kinni fresh or dried by 5 percent, smoked bonga by 8 percent, sardines in vegetable oil by 12 percent, condensed sweet milk by 20 percent, peanut cream local by 18 percent, benni seed by 19 percent, equisie seed by 10 percent, round onion by 21 percent, fresh okra by 12 percent, fresh round tomatoes by 25 percent, cucumber by 30 percent, garlic by 13 percent, fresh tora by 17 percent, foofoo by 11 percent, green, yellow and red pepper by 40 percent, NAN1 baby food by 13 percent, etc.

The non-food category hits an inflation of 30.60 percent in December 2022 from 29.38 percent in November 2022; a 1.22 percentage points increase. In this component, six divisions went up and five went down. Noticeable increases were observed in Housing, Water, Electricity, Gas and Other Fuels by 8.25 percentage points; Miscellaneous Goods and Services by 6.45 percentage points and Transport by 4.34 percentage points.

Table 1.2: 2022 Food and Non-food inflation rates

Items	Jan	Feb	Mar	April	May	June	July	Aug	Sept	Oct	Nov	Dec
Food and Non-alcoholic Beverages	15.68	17.09	22.96	23.00	26.29	28.49	30.58	31.60	35.20	40.14	43.62	46.70
Non-food	17.60	18.42	21.86	22.92	24.84	28.66	29.61	26.58	25.37	28.41	29.38	30.60

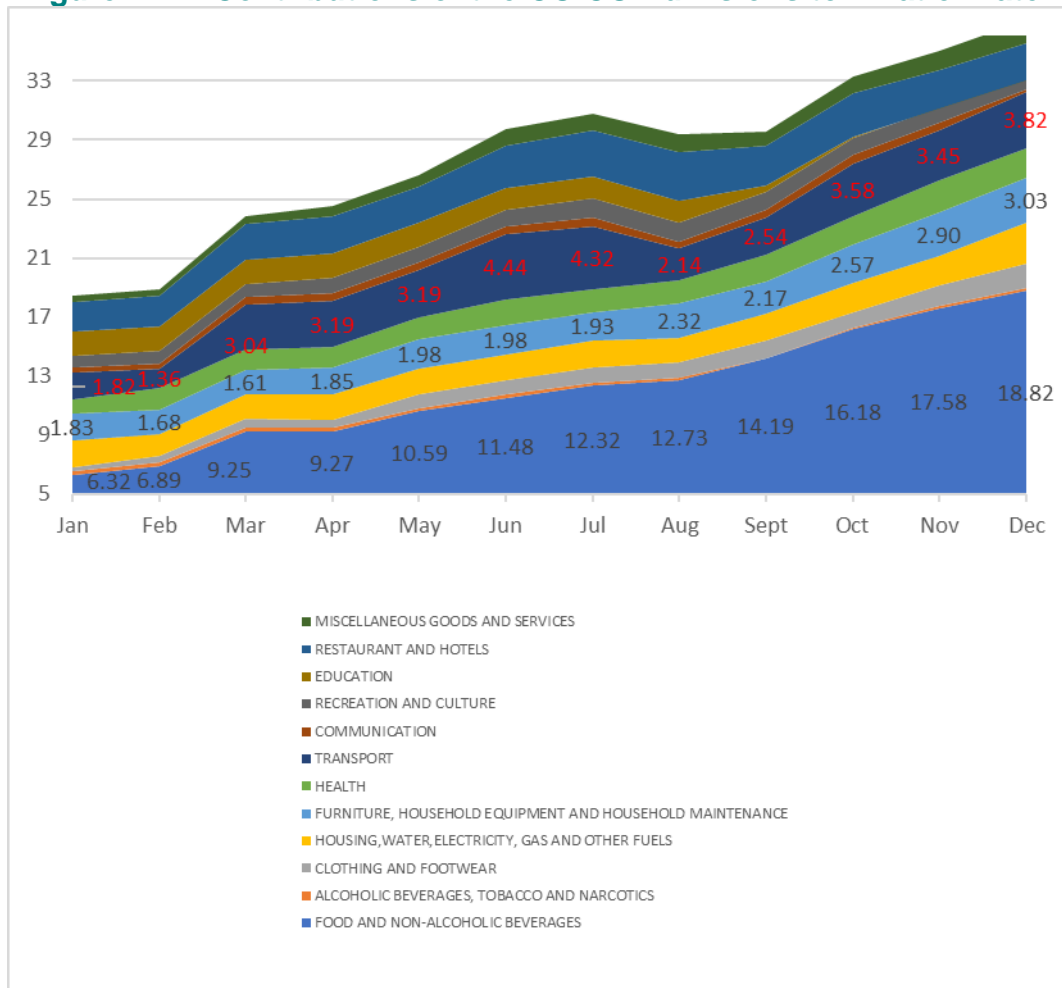
³ Food and Non-Alcoholic Beverages

⁴ All other main COICOP Functions/divisions excluding Food and Non-Alcoholic Beverages

4.0 CONTRIBUTIONS OF COICOP DIVISIONS TO ANNUAL INFLATION RATE (YoY)

Annual National Consumer Price Inflation (year-on-year) for December 2022 stood at 37.09 percent, up by 2.04 percentage points from 35.05 percent in November 2022. Of the 37.09 percent, the following COICOP divisions made the most impacts in relation to their weights: Food and Non-alcoholic Beverages (18.82 percent); Transport (3.82 percent) and Furniture, household equipment and Household Maintenance, which has just overtaken Restaurants and Hotels, (3.03 percent).

Figure 2: Contributions of the COICOP divisions to inflation rate

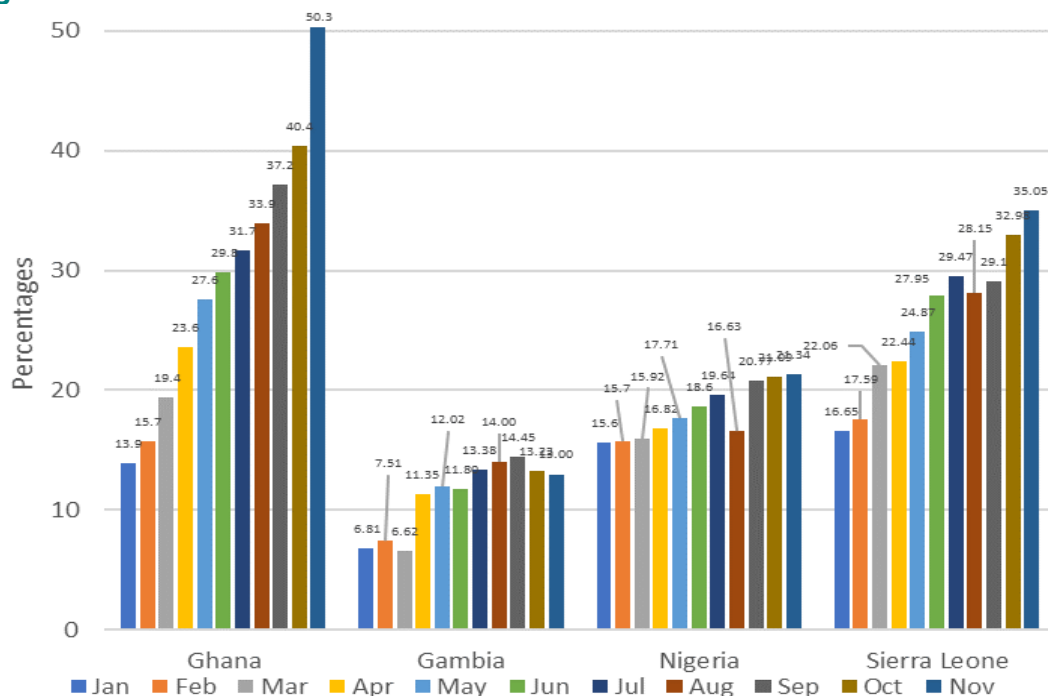


Concluding Note: We noted a sustained increase in the year-on-year national inflation rate in December; which is above the estimates of the Western, Eastern and Northern regions’ but below the Southern and North-west regions’ estimates. Food and non-alcoholic beverages continues to make the most impact on national inflation and is increasing every month; with Transport as the second key driver. It is also observed that in 2022, the national inflation rate more than doubled from 16.65 percent in January to 37.09 percent in December; which was highly propelled by Food, especially imported food and also by Transport, especially fuel.

5.0 CPI COMPARISON FOR SELECTED ECOWAS MEMBER STATES

All selected countries, except The Gambia, reported increased inflation rates for the month of November 2022. The inflation estimates for all countries this year indicate upwards trend; that is, general price increases. All countries are now reporting double digit inflation, with Sierra Leone and Ghana reporting above 30 percent inflation rate.

Figure 3: Recent inflation rates of selected ECOWAS countries



NOTE: The National CPI measures the change in prices, on average, from month to month, of the goods and services bought by households, in Freetown, Bo, Kenema, Kono, Makeni, Port Loko-Kambia and include all expenditure groups. Prices are collected for least 440 items. All prices collected are the prevailing retail market prices from six (6) markets in Freetown and, three (3) Markets each in Bo, Kenema, Kono, Makeni, Port Loko-Kambia and for weekly prices and other outlets for monthly items whose prices are less likely to fluctuate rapidly. We are using the Modified Laspeyres formula to compute indices according to the Classification of Individual Consumption by Purpose (COICOP) with 12 functions.

Sierra Leone has recently rebased the CPI to December 2021, increased the number of items in the basket and expanded the coverage to North-West region.

Table 2: National and Western region CPI, Year-on-Year and Monthly Inflation Rates

	National CPI (December 2021=100)			Western Area/Freetown CPI (December 2021=100)		
	CPI	Year-on- Year % Change	Monthly Change	CPI	Year-on –Year % Change	Monthly Change
2018						
January	59.99	14.68	1.68	60.19	13.25	1.24
February	60.78	14.38	1.32	60.81	12.63	1.03
March	61.53	14.9	1.23	61.38	12.75	0.94
April	62.13	15.14	0.98	61.76	12.5	0.62
May	62.94	16.02	1.3	62.59	13.78	1.34
June	63.92	16.58	1.56	63.47	14.32	1.41
July	65.19	17.71	1.99	65.07	16.32	2.52
August	66.06	18.18	1.33	66.39	17.78	2.03
September	66.34	17.77	0.42	66.08	16.13	-0.47
October	65.86	16.05	-0.72	65.34	14.07	-1.12
November	67.60	16.55	2.64	67.39	15.26	3.14
December	67.40	14.24	-0.3	66.61	12.04	-1.16
Average	64.15	16.02	1.12	63.92	14.24	0.96
2019						
January	68.60	14.35	1.78	67.09	11.46	0.72
February	69.34	14.08	1.08	69.30	13.96	3.29
March	70.62	14.77	1.85	70.56	14.96	1.82
April	72.42	16.56	2.55	72.03	16.63	2.08
May	72.36	14.97	-0.08	71.61	14.41	-0.58
June	73.28	14.64	1.27	72.42	14.10	1.13
July	74.90	14.89	2.21	73.01	12.20	0.81
August	76.26	15.44	1.82	75.30	13.42	3.14
September	76.40	15.16	0.18	74.40	12.59	-1.20
October	76.30	15.85	-0.13	75.76	15.95	1.83
November	76.45	13.09	0.20	77.94	15.66	2.88
December	76.77	13.90	0.42	79.11	18.77	1.50
Average	73.64	14.81	1.10	73.21	14.51	1.45
2020						
January	77.93	13.60	1.51	80.57	20.09	1.85
February	79.53	14.70	2.05	82.33	18.8	2.18
March	81.61	15.56	2.62	83.56	18.42	1.49
April	83.34	15.08	2.12	84.95	17.94	1.66
May	83.56	15.48	0.26	85.93	20.00	1.15
June	83.80	14.36	0.29	84.94	17.29	-1.15
July	84.86	13.30	1.26	86.41	18.35	1.73
August	86.42	13.32	1.84	87.49	16.19	1.25
September	86.87	13.70	0.52	88.39	18.80	1.03
October	85.24	11.72	-1.88	85.64	13.04	-3.11
November	84.58	10.63	-0.77	85.46	9.65	-0.21
December	84.79	10.45	0.25	86.09	8.82	0.74
Average	83.54	13.49	0.84	85.15	16.45	0.72
2021						
January	86.89	11.50	2.48	88.05	9.28	2.28
February	88.18	10.88	1.48	88.55	7.55	0.57
March	88.92	8.96	0.84	90.16	7.90	1.82
April	91.35	9.61	2.73	91.84	8.11	1.86
May	91.75	9.80	0.44	92.56	7.72	0.78
June	92.35	10.20	0.65	93.58	10.17	1.10
July	93.77	10.50	1.54	93.96	8.74	0.41
August	95.82	10.88	2.19	95.87	9.58	2.03
September	96.98	11.64	1.21	96.83	9.55	1.00
October	97.64	14.55	0.68	98.1	14.55	1.31
November	97.92	15.77	0.29	98.75	15.55	0.66
December	100.00	17.94	2.12	100.00	16.16	1.27
Average	93.46	11.85	1.39	94.02	10.41	1.26
2022						
January	101.36	16.65	1.36	100.57	14.22	0.57
February	103.69	17.59	2.30	102.76	16.05	2.18
March	108.54	22.06	4.68	108.21	20.02	5.30
April	111.85	22.44	3.05	110.28	20.08	1.91
May	114.57	24.87	2.43	112.97	22.05	2.44
June	118.16	27.95	3.13	117.13	25.17	3.68
July	121.40	29.47	2.74	119.38	27.05	1.92
August	122.79	28.15	1.14	120.23	25.41	0.71
September	125.20	29.10	1.96	121.51	25.49	1.06
October	129.84	32.98	3.71	129.71	32.22	6.75
November	132.24	35.05	1.85	130.37	31.94	0.51
December	137.09	37.09	3.67	135.93	35.93	4.26

Table 3: National Consumer Price Index by Main COICOP Groups (December 2021=100)

	Food and Non-Alcoholic Beverages	Alcoholic Beverages, Tobacco and Narcotics	Clothing and Footwear	Housing, Water, Electricity, Gas and Other Fuels	Furniture, Household Equipment and Household Maintenance	Health	Transport	Communication	Recreation and Culture	Education	Restaurant and Hotels	Miscellaneous Goods and Services	All Items
Weight	40.3	1	7.7	8.9	5.6	7.6	8.6	4.7	2.6	3.1	6.1	3.9	100.00
Jan-18	62.39	59.22	60.1	67.01	55.75	49.49	57.55	85.73	66.92	42.61	49.14	70.07	59.99
Feb-18	63.17	60.37	60.78	67.77	56.85	50.34	57.72	88.23	67.69	42.99	50.45	71.01	60.78
Mar-18	63.81	61.5	61.40	68.29	58.25	51.33	58.13	88.47	69.08	43.66	51.77	72.19	61.53
Apr-18	64.36	62.21	61.70	68.71	58.66	52.32	58.41	88.98	69.85	44.18	52.81	73.55	62.13
May-18	65.37	63.01	62.52	69.63	59.04	52.83	58.81	89.28	70.5	44.33	53.63	74.46	62.94
Jun-18	66.57	64.23	63.37	70.40	60.03	53.63	59.14	89.83	71.03	44.78	54.71	75.49	63.92
Jul-18	67.27	65.22	63.93	74.98	61.36	54.45	63.82	90.42	71.52	45.09	56.13	75.8	65.19
Aug-18	68.49	66.1	65.51	76.73	64.78	53.94	65.08	74.5	71.6	45.58	58.20	74.49	66.06
Sep-18	69.1	67.7	65.7	77.36	63.54	54.54	66.27	75.67	73.85	34.69	57.70	77.42	66.34
Oct-18	68.08	65.61	66.36	76.55	63.95	54.97	66.46	76.02	73.15	34.69	62.07	74.76	65.86
Nov-18	70.08	69.56	68.46	78.62	65.09	55.9	67.43	76.51	74.89	34.9	59.26	78.25	67.6
Dec-18	69.05	67.97	67.71	78.94	63.67	59.13	69.06	74.66	72.67	34.9	66.37	73.32	67.4
Jan-19	68.98	70.55	74.4	79.57	65.8	60.83	68.41	75.11	75.4	35.02	64.13	78.55	68.6
Feb-19	69.8	71.8	73.94	79.41	69.37	61.03	68.04	82.98	81.02	35.22	64.28	80.03	69.34
Mar-19	71.65	72.51	75.53	80.42	70.43	61.87	68.19	82.23	77.84	35.4	65.72	80.64	70.62
Apr-19	74.6	76	76.59	82.26	72.23	60.73	69.38	82.29	79.49	35.74	65.28	83.48	72.42
May-19	70.28	74.52	79.01	80.27	77.96	69.97	71.01	91.25	76.49	38.98	64	86.16	72.36
Jun-19	70.99	74.67	80.72	80.13	80.41	73	71.56	92.15	74.72	35.45	64.45	85.49	73.28
Jul-19	72.43	76.29	82.46	82.37	81.22	74.93	75.33	85.33	75.56	35.45	67.48	88.26	74.9
Aug-19	74.16	77.71	79.73	82.5	78.59	82.93	73.6	88.41	73.81	35.45	67.06	83.05	76.26
Sep-19	74.84	76.39	79.9	82.89	79.75	79.76	75.46	80.55	73.49	35.45	75.35	86.23	76.4
Oct-19	74.26	76.17	79.62	84.18	80.15	80.05	75.48	80.55	73.37	35.45	75.06	86.44	76.3
Nov-19	72.62	73.03	79.47	85.78	76.99	82.49	75.33	80.55	75.1	59.80	73.09	84.95	76.45
Dec-19	72.77	75.82	78.39	87.14	77.83	82.75	76.98	80.54	74.89	59.80	73.09	84.8	76.77
Jan-20	74.12	78.14	80.46	87.8	77.77	82.4	80.57	80.53	75.27	59.80	77.79	87.01	77.93
Feb-20	75.6	74.67	81.41	88.57	75.13	89.23	80.99	84.64	75.53	59.80	77.18	85.77	79.53
Mar-20	78.72	75.82	83.33	86.99	76.27	91.85	80.12	89.29	77.89	59.80	78.96	89.3	81.61
Apr-20	82.46	77.23	84.58	83.89	77.77	92.50	79.16	89.3	78.61	59.80	79.99	90.43	83.34
May-20	81.95	77.83	85.57	84.84	78.19	93.49	79.43	90.06	78.7	59.80	81.85	91.71	83.56
Jun-20	83.01	79.03	87.07	84.80	79.46	88.90	82.3	90.97	79.16	59.80	82.91	93.07	83.8
Jul-20	84.94	79.08	88.5	84.81	80.16	89.19	83.31	90.07	80.40	59.80	83.09	90.84	84.86
Aug-20	87.31	78.99	90.07	84.71	81.00	90.86	82.94	92.30	80.75	59.80	82.41	92.97	86.42
Sept-20	88.12	78.05	90.63	85.77	81.90	90.73	82.27	90.70	81.11	59.80	79.44	93.14	86.87
Oct-20	84.42	77.01	94.15	83.84	81.97	90.56	81.09	89.99	80.78	59.80	79.08	94.13	85.24
Nov-20	83.49	75.86	93.3	82.71	81.68	91.37	80.89	90.26	79.16	59.80	76.71	92.3	84.58
Dec-20	83.75	80.38	93.4	83.70	82.97	88.91	82.09	93.31	78.43	65.21	76.66	90.24	84.79
Jan-21	88.12	80.29	92.83	84.33	82.56	89.69	81.64	93.65	78.62	65.21	76.7	90.99	86.89
Feb-21	90.41	80.84	91.95	88.41	85.01	86.73	84.93	93.87	79.03	65.21	78.43	92.36	88.18
Mar-21	90.88	83.38	90.61	89.53	85.15	90.14	85.10	92.19	79.02	65.21	78.01	92.22	88.92
Apr-21	95.36	87.89	93.51	90.09	86.13	89.45	85.5	92.19	79.36	65.21	79.63	91.61	91.35
May-21	96.34	87.34	91.12	90.31	86.43	90.08	84.89	92.19	79.78	65.21	84.02	92.18	91.75
Jun-21	97.22	88.65	92.22	91.89	88.29	89.09	85.32	92.19	80.39	65.56	84.31	89.92	92.35
Jul-21	98.03	94.51	93.68	92.22	92.84	89.96	92.35	92.2	81.54	65.56	85.34	91.87	93.77
Aug-21	100.31	98.11	95.31	94.64	92.70	91.46	99.61	92.22	82.67	65.56	85.67	92.41	95.82
Sept-21	99.83	100.05	95.13	95.87	95.75	94.21	99.45	92.21	86.21	78.23	93.04	97.60	96.98
Oct-21	99.76	99.84	98.37	95.71	96.40	94.46	99.17	92.22	90.18	86.86	93.79	99.51	97.64
Nov-21	99.21	99.17	98.38	96.05	98.16	94.92	99.71	93.83	94.80	94.02	95.35	100.74	97.92
Dec-21	100.00	100.00	100.00	100.00	100.00	100.00	100.00	100.00	100.00	100.00	100.00	100.00	100.00
Jan-22	101.94	99.63	96.04	101.08	109.54	101.29	99.13	100.17	102.54	100.00	101.72	101.51	101.36
Feb-22	105.86	98.85	97.29	103.12	110.56	103.13	98.48	100.88	104.85	100.00	104.92	102.84	103.69
Mar-22	111.75	103.03	98.32	105.97	109.63	107.18	115.52	101.32	107.26	100.00	108.62	104.71	108.54
Apr-22	117.29	104.39	100.38	107.21	114.59	105.64	117.57	102.42	109.12	100.00	112.64	107.62	111.85
May-22	121.67	105.38	102.14	107.96	116.93	108.31	116.74	101.88	112.45	100.00	117.79	110.36	114.57
Jun-22	124.92	109.68	104.38	109.41	119.44	109.47	129.86	103.10	116.08	96.81	123.56	115.00	118.16
Jul-22	128.01	111.18	106.58	111.54	124.78	107.54	139.33	102.83	122.51	96.81	129.40	118.73	121.40
Aug-22	132.01	113.55	107.79	112.45	131.18	110.87	124.67	101.39	124.23	96.81	131.91	121.32	122.79
Sept-22	134.97	103.16	109.41	115.94	132.78	116.62	129.22	102.91	125.29	90.18	132.93	121.97	125.20
Oct-22	139.80	107.79	111.84	117.19	140.62	118.74	140.95	103.28	129.83	90.18	139.56	127.14	129.84
Nov-22	142.49	112.07	116.78	117.8	148.95	122.01	140.14	104.17	132.2	90.18	137.25	132.92	132.24
Dec-22	146.7	114.84	121.52	130.89	154.1	126.98	144.89	103.96	134.55	90.18	141.74	138.39	137.09