

# CONSUMER PRICE INDEX FEBRUARY 2021 PRESS RELEASE

Released: 17<sup>th</sup> March, 2021 @ 12: 00 noon

**Contact Persons:**

**Mwaluma Andrew Bryma GEGBE, MA, MSc**

Director of National Accounts and Economic Statistics Division  
Statistics Sierra Leone

Mobile: +23279442430/ +23288000898

Email: [mwaluma.gegbe@statistics.sl](mailto:mwaluma.gegbe@statistics.sl)

Skype: mwaluma.gegbe

**Isata M. ALLIEU-KEIKURA, MSc**

Principal Statistician and Head, Price & Labour Statistics Section  
National Accounts and Economic Statistics Division  
Statistics Sierra Leone

Mobile: +23276580842

Email: [isata.allieu-keikura@statistics.sl](mailto:isata.allieu-keikura@statistics.sl)

**Reviewed by**

**Andrew Bob JOHNNY, MSc**

Deputy Statistician General  
Statistics Sierra Leone

Email: [andrew.johnny@statistics.sl](mailto:andrew.johnny@statistics.sl)

**Approved for release by:**

**Prof. Osman SANKOH, DSc**

Statistician General & CEO  
Statistics Sierra Leone

Email: [osman.sankoh@statistics.sl](mailto:osman.sankoh@statistics.sl)

**17<sup>th</sup> March, 2021**

# CONTENTS

Contents.....	i
Key finding.....	ii
Detailed Explanation on the February, 2021 Consumer Price Index (CPI) .....	1
Figure 1a: Year-on-Year Percentage Changes in the CPI.....	1
Figure 1b: Monthly Percentage Changes in the CPI.....	1
Table 1.0: Regional Year-on-Year and Monthly Inflation rates.....	1
Table 1.1: National CPI and Year-on-Year Rates of Inflation by Main COICOP Groups (2008=100).....	2
Table 1.2: 2021 Food and Non-food inflation rates .....	3
Table 2.0: Year-on-Year and Monthly Inflation Rates.....	3
Table 3.0: National Consumer Price Index by Main COICOP Groups (2008=100).....	4

## KEY FINDINGS

### Headline National Inflation Rates

Annual National Consumer Price Inflation (year-on-year) went down by 0.63 percentage point from 11.50 percent in January 2021 to 10.87 percent in February 2021.

The monthly consumer price inflation for February 2021 is 1.49 percent; went down by 0.99 percentage point from 2.48 percent in January, 2021.

### Contributions to headline annual (year-on-year) consumer price inflation

- ✓ Food and non-alcoholic beverages increased from 18.88 percent in January 2021 to 19.59 percent in February 2021. The inflation rate increased by 0.71 percentage point year-on-year.
- ✓ Alcoholic beverages, tobacco and narcotics increased from 2.75 percent in January 2021 to 8.27 percent in February 2021. The inflation rate increased by 5.52 percentage points year-on-year.
- ✓ Clothing and footwear declined by 2.43 percentage points from 15.38 percent in January 2021 to 12.95 percent in February 2021
- ✓ Housing, water, electricity, gas and other fuels increased from -3.95 percent in January 2021 to -0.18 percent in February 2021. The inflation rate increased by 3.77 percentage points year-on-year.
- ✓ Furniture, household equipment and household maintenance increased from 6.15 percent in January 2021 to 13.16 percent in February 2021. The inflation rate increased by 7.01 percentage points year-on-year.
- ✓ Health declined by 11.63 percentage points from 8.84 percent in January 2021 to -2.79 percent in February 2021
- ✓ Transport increased from 1.33 percent in January 2021 to 4.87 percent in February 2021. The inflation rate increased by 3.54 percentage points year-on-year.
- ✓ Communication declined by 5.38 percentage points from 16.29 percent in January 2021 to 10.91 percent in February 2021
- ✓ Recreation and Culture increased from 4.44 percent in January 2021 to 4.62 percent in February 2021. The inflation rate increased by 0.18 percentage point year-on-year.
- ✓ For Education, no change is noticed between January, 2021 and February, 2021.
- ✓ Restaurant and hotels increased from -1.41 percent in January 2021 to 1.62 percent in February 2021. The inflation rate increased by 3.03 percentage points year-on-year.
- ✓ Miscellaneous goods and services increased from 4.57 percent in January 2021 to 7.69 percent in February 2021. The inflation rate increased by 3.12 percentage points year-on-year.

More information can also be obtained from our website: [www.statistics.sl](http://www.statistics.sl)

**For more detailed information:** Subscribe to the Detailed CPI Report. Please Contact:  
The Statistician General, Statistics Sierra Leone, P. O. Box 595, Tower Hill, Freetown, SIERRA LEONE  
E-mail: [statistics@statistics.sl](mailto:statistics@statistics.sl) or [info@statistics.sl](mailto:info@statistics.sl)

## Contributions to monthly consumer price inflation

- ✓ Food and non-alcoholic beverages declined by 2.62 percentage points from 5.21 percent in January 2021 to 2.59 percent in February 2021
- ✓ Alcoholic beverages, tobacco and narcotics increased from -0.11 percent in January 2021 to 0.68 percent in February 2021. The inflation rate increased by 0.79 percentage point year-on-year.
- ✓ Clothing and footwear declined by 0.34 percentage point from -0.61 percent in January 2021 to -0.95 percent in February 2021
- ✓ Housing, water, electricity, gas and other fuels increased from 0.77 percent in January 2021 to 4.83 percent in February 2021. The inflation rate increased by 4.06 percentage points year-on-year.
- ✓ Furniture, household equipment and household maintenance increased from -0.50 percent in January 2021 to 2.98 percent in February 2021. The inflation rate increased by 3.48 percentage points year-on-year.
- ✓ Health declined by 4.17 percentage points from 0.88 percent in January 2021 to -3.29 percent in February 2021
- ✓ Transport increased from -0.55 percent in January 2021 to 4.04 percent in February 2021. The inflation rate increased by 4.59 percentage points year-on-year.
- ✓ Communication services declined by 0.12 percentage point from 0.36 percent in January 2021 to 0.24 percent in February 2021
- ✓ Recreation and Culture increased from 0.24 percent in January 2021 to 0.52 percent in February 2021. The inflation rate increased by 0.28 percentage point year-on-year.
- ✓ For Education, no change is noticed between January, 2021 and February, 2021.
- ✓ Restaurants and hotels services increased from 0.05 percent in January 2021 to 2.27 percent in February 2021. The inflation rate increased by 2.22 percentage points year-on-year.
- ✓ Miscellaneous goods and services increased from 0.83 percent in January 2021 to 1.51 percent in February 2021. The inflation rate increased by 0.68 percentage point year-on-year.

---

More information can also be obtained from our website: [www.statistics.sl](http://www.statistics.sl)

**For more detailed information:** Subscribe to the Detailed CPI Report. Please Contact:  
The Statistician General, Statistics Sierra Leone, P. O. Box 595, Tower Hill, Freetown, SIERRA LEONE  
E-mail: [statistics@statistics.sl](mailto:statistics@statistics.sl) or [info@statistics.sl](mailto:info@statistics.sl)

## DETAILED EXPLANATION ON THE FEBRUARY, 2021 CONSUMER PRICE INDEX (CPI)

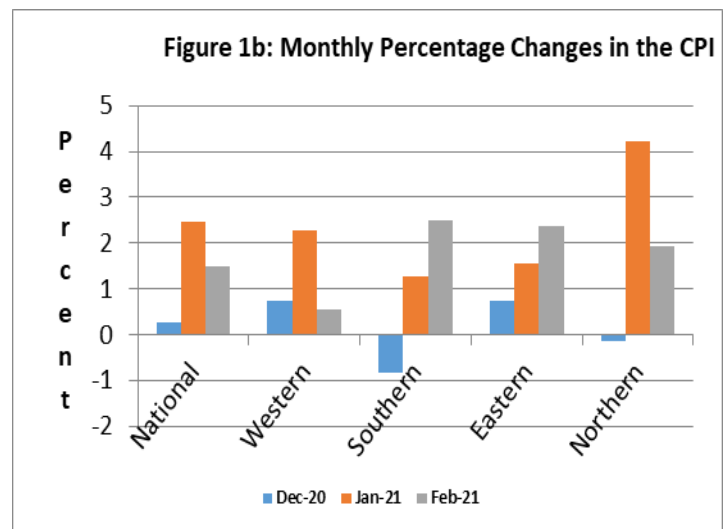
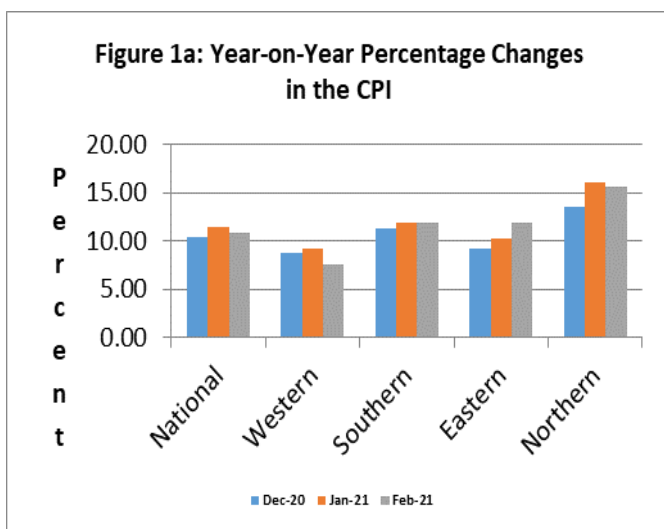
The National Monthly CPI (2008=100) increased from 318.27 in January 2021 to 323.01 in February 2021, resulting to 1.49 percent inflation this month. The national year-on-year inflation for February 2021 is 10.87 percent, which indicates a downward trend compared to 11.50 percent in January 2021. Two regions show upward movement: Southern region from 11.84 percent in January 2021 to 11.98 percent in February 2021 and Eastern region moved from 10.22 percent in January 2021 to 11.96 percent in February 2021. On the other hand, Western and Northern regions declined: Western region moved from 9.29 percent in January 2021 to 7.55 percent in February 2021 and Northern region from 16.14 percent in January 2021 to 15.64 percent in February 2021.

**Table 1.0 National & Regional Year-on-Year and Monthly Inflation rates**

2008=100										
Month	National		Western Area		Eastern Region		Southern Region		Northern Region	
	Year-on-Year	Monthly	Year-on-Year	Monthly	Year-on-Year	Monthly	Year-on-Year	Monthly	Year-on-Year	Monthly
Jan, 2021	11.50	2.48	9.29	2.28	10.22	1.56	11.84	1.26	16.14	4.21
Feb, 2021	10.87	1.49	7.55	0.56	11.96	2.37	11.98	2.49	15.64	1.94

It is observed from the table above that the year-on-year inflation rates for the Northern, Southern and Eastern regions are above the national estimate for the month of February, 2021, while Western region is below.

Figures 1a & 1b below illustrate the last three months' estimates of the year-on-year inflation and monthly inflation respectively at National and Regional levels.



## FACTORS INFLUENCING CHANGES IN THE MONTHLY RATE OF INFLATION

Table 1.1 below shows the National CPI of the months of February, 2020 and February, 2021; as well as the 12 months change in the CPI for the main COICOP functions.

**Table 1.1: National CPI and Year-on-Year Rates of Inflation by Main COICOP Functions (2008=100)**

COICOP	WEIGHT	Feb-20	Nov-20	Dec-20	Jan-21	Feb-21	Monthly Inflation	3 Months Change Inflation	12 Months Inflation
		Previous Year- Month	Month m-2 for Current Year	Month m-1 for Current Year	Month m for Current Year	Month m for Current Year			
Food and Non-Alcoholic Beverages	41.86	291.53	321.94	322.98	339.82	348.63	2.59	8.29	19.59
Alcoholic Beverages, Tobacco and Narcotics	1.71	275.23	279.62	296.29	295.96	297.98	0.68	6.57	8.27
Clothing and Footwear	7.34	341.22	391.07	391.52	389.12	385.42	-0.95	-1.44	12.95
Housing, Water, Electricity, Gas and Other Fuels	13.70	233.51	218.08	220.66	222.35	233.09	4.83	6.88	-0.18
Furniture, Household Equipment and Household Maintenance	5.86	335.71	364.97	370.75	368.90	379.88	2.98	4.09	13.16
Health	11.36	371.28	380.22	369.95	373.19	360.91	-3.29	-5.08	-2.79
Transport	7.75	268.79	268.45	272.42	270.93	281.87	4.04	5.00	4.87
Communication	2.04	163.83	174.71	180.61	181.26	181.70	0.24	4.00	10.91
Recreation and Culture	1.47	224.43	235.21	233.02	233.59	234.80	0.52	-0.17	4.62
Education	2.88	206.57	206.57	225.26	225.26	225.26	0.00	9.05	9.05
Restaurant and Hotels	0.92	336.83	334.78	334.55	334.71	342.30	2.27	2.25	1.62
Miscellaneous Goods and Services	3.13	266.44	286.74	280.34	282.66	286.93	1.51	0.07	7.69
<b>All Items</b>	<b>100</b>	<b>291.33</b>	<b>309.82</b>	<b>310.58</b>	<b>318.27</b>	<b>323.01</b>	<b>1.49</b>	<b>4.26</b>	<b>10.87</b>

The National CPI measures the change in prices, on average, from month to month, of the goods and services bought by households, in Freetown, Bo, Kenema, Kono and Makeni and include all expenditure groups. Prices are collected for at least 436 items. All prices collected are the prevailing retail market prices from six (6) markets in Freetown and, three (3) Markets each in Bo, Kenema, Makeni and Kono for weekly prices and other outlets for monthly items whose prices are less likely to fluctuate rapidly. We are using the Modified Laspeyres formula to compute indices according to the Classification of Individual Consumption by Purpose (COICOP) with 12 functions.

### Food<sup>1</sup> and Non-Food<sup>2</sup> Components

Food items inflation increased by 0.71 percentage point from 18.88 percent in January 2021 to 19.59 percent in February 2021. The marginal rise in food items inflation is due to either some food item prices remained the same as in January or increased insignificantly in February 2021. The following food-item's increases were noted to be significant: imported medium grain rice by 5 percent, frozen chicken by 12 percent, fresh snapper by 8 percent, Sheep-head fish by 11%, vegetable oil by 10 percent, eggplant by 25 percent, fresh okra by 13 percent, cassava leaves by 31%, potato by 38% and maggi by 17 percent. On the other hand, non-food item inflation decreased by 1.63 percentage points from 5.87 in January 2021 to 4.24 percent in February 2021. Key

<sup>1</sup> Food and Non-Alcoholic Beverages

<sup>2</sup> All other main COICOP Functions excluding Food and Non-Alcoholic Beverages

components that declined in the non-food are clothing and footwear by 2.43 percentage points, health by 11.63 percentage points and communication by 5.38 percentage points.

**Table 1.2: 2021 Food and Non-food inflation rates**

Items	Jan	Feb	Mar	Apr	May	Jun	Jul	Aug	Sept	Oct	Nov	Dec
Food and Non-al. Bev.	18.88	19.59										
Non-food	5.87	4.24										

**Table 2.0: Year-on-Year and Monthly Inflation Rates**

	National CPI (2008=100)			Western Area/Freetown CPI (2008=100)		
	CPI	Year-on-Year % Change	Monthly Change	CPI	Year-on-Year % Change	Monthly Change
<b>2017</b>						
January	191.59	18.66	2.24	197.56	18.64	2.58
February	194.63	19.82	1.59	200.70	19.72	1.59
March	196.15	20.22	0.78	202.36	20.16	0.83
April	197.66	19.80	0.77	204.09	19.81	0.85
May	198.72	18.91	0.54	204.49	18.09	0.20
June	200.85	19.14	1.07	206.40	18.07	0.93
July	202.87	18.56	1.01	207.94	18.33	0.75
August	204.75	18.01	0.93	209.55	17.17	0.77
September	206.35	17.83	0.78	211.50	17.56	0.93
October	207.88	16.86	0.74	212.93	16.30	0.67
November	212.46	16.26	2.20	217.34	16.45	2.07
December	216.11	15.33	1.72	220.98	14.74	1.67
<b>Average</b>	<b>202.50</b>	<b>18.28</b>	<b>1.20</b>	<b>207.99</b>	<b>17.92</b>	<b>1.15</b>
<b>2018</b>						
January	219.73	14.69	1.68	223.74	13.25	1.25
February	222.65	14.40	1.33	226.02	12.62	1.02
March	225.40	14.91	1.24	228.17	12.76	0.95
April	227.58	15.14	0.97	229.58	12.49	0.62
May	230.55	16.02	1.31	232.64	13.77	1.34
June	234.13	16.57	1.55	235.92	14.31	1.41
July	238.79	17.71	1.99	241.88	16.32	2.52
August	242.00	18.19	1.34	246.79	17.77	2.03
September	243.00	17.77	0.43	245.62	16.13	-0.47
October	241.30	16.06	-0.72	242.86	14.06	-1.12
November	247.60	16.55	2.64	250.50	15.25	3.14
December	246.90	14.25	-0.29	247.61	12.05	-1.15
<b>Average</b>	<b>234.97</b>	<b>16.02</b>	<b>1.12</b>	<b>237.61</b>	<b>14.23</b>	<b>0.96</b>
<b>2019</b>						
January	251.27	14.35	1.77	249.40	11.47	0.72
February	254.01	14.08	1.09	257.62	13.98	3.30
March	258.69	14.77	1.84	262.29	14.95	1.81
April	265.27	16.56	2.54	267.74	16.62	2.08
May	265.07	14.97	-0.08	266.18	14.41	-0.58
June	268.42	14.65	1.26	269.19	14.10	1.13
July	274.35	14.89	2.21	271.38	12.20	0.81
August	279.34	15.43	1.82	279.90	13.41	3.14
September	279.86	15.16	0.19	276.56	12.59	-1.19
October	279.49	15.85	-0.13	281.63	15.96	1.83
November	280.04	13.09	0.20	289.71	15.66	2.87
December	281.20	13.89	0.41	294.07	18.76	1.50
<b>Average</b>	<b>269.75</b>	<b>14.81</b>	<b>1.09</b>	<b>272.14</b>	<b>14.51</b>	<b>1.45</b>

More information can also be obtained from our website: [www.statistics.sl](http://www.statistics.sl)

**For more detailed information:** Subscribe to the Detailed CPI Report. Please Contact:  
The Statistician General, Statistics Sierra Leone, P. O. Box 595, Tower Hill, Freetown, SIERRA LEONE  
E-mail: [statistics@statistics.sl](mailto:statistics@statistics.sl) or [info@statistics.sl](mailto:info@statistics.sl)

**Table 2.0: (Cont...d)**

	National CPI (2008=100)			Western Area/Freetown CPI (2008=100)		
	CPI	Year-on- Year % Change	Monthly Change	CPI	Year-on- Year % Change	Monthly Change
<b>2020</b>						
January	285.45	13.60	1.51	299.50	20.09	1.84
February	291.33	14.69	2.06	306.04	18.79	2.18
March	298.95	15.56	2.62	310.61	18.42	1.49
April	305.28	15.08	2.12	315.76	17.94	1.66
May	306.07	15.47	0.26	319.41	20.00	1.15
Jun	306.97	14.36	0.29	315.75	17.29	-1.15
Jul	310.84	13.30	1.26	321.21	18.36	1.73
Aug	316.56	13.32	1.84	325.23	16.20	1.25
Sept	318.22	13.71	0.52	328.56	18.81	1.02
Oct	312.22	11.71	-1.89	318.35	13.04	-3.11
Nov	309.82	10.63	-0.77	317.68	9.65	-0.21
Dec	310.58	10.45	0.25	320.01	8.82	0.73
<b>Average</b>	<b>306.02</b>	<b>13.49</b>	<b>0.84</b>	<b>316.51</b>	<b>16.45</b>	<b>0.72</b>
<b>2021</b>						
January	318.27	11.50	2.48	327.32	9.29	2.28
February	323.01	10.87	1.49	329.15	7.55	0.56



**Table 3.0: National Consumer Price Index by Main COICOP Groups (2008=100)**

	Food and Non-Alcoholic Beverages	Alcoholic Beverages, Tobacco and Narcotics	Clothing and Footwear	Housing, Water, Electricity, Gas and Other Fuels	Furniture, Household Equipment and Maintenance	Health	Transport	Communication	Recreation and Culture	Education	Restaurant and Hotels	Miscellaneous Goods and Services	All Items
Weight	41.86	1.71	7.34	13.7	5.86	11.36	7.75	2.04	1.47	2.88	0.92	3.13	100
Jan-17	204.76	181.11	216.4	165.98	215.6	183.42	173.05	148.89	180.22	136.84	182.64	187.32	191.59
Feb-17	208.42	186.2	221.43	167.42	221.35	185.87	173.85	150.43	180.65	136.91	182.74	190.46	194.63
Mar-17	210.81	190.78	221.69	167.97	222.42	186.13	176.25	150.52	181.21	137.08	184.93	191.65	196.15
Apr-17	211.73	192.07	224.05	168.43	226.5	188.8	180.03	153.23	181.88	137.21	186.93	193.3	197.66
May-17	212.33	193.55	227.95	168.96	226.53	189.34	183.8	154.16	182.71	137.22	189.74	195.38	198.72
Jun-17	214.56	195.64	233.71	169.47	230.04	191.33	184.16	156.1	185.35	137.51	190.92	197.51	200.85
Jul-17	217.85	197.43	234.78	169.8	231.65	193	184.7	156.96	185.8	137.65	192.15	199.62	202.87
Aug-17	220.49	202.41	235.42	170.01	234.36	194.21	185.1	157.52	186.46	138.55	195.97	203.91	204.75
Sept-17	221.96	204.02	237.81	170.27	237.6	196.62	186.54	160.62	187.72	138.85	199.6	205.61	206.35
Oct-17	223.88	206.03	239.05	170.71	240.1	197.87	187.36	161.93	190.35	139.17	203.05	207.79	207.88
Nov-17	231.59	209.96	242.24	172.65	242.46	199.36	187.63	163.72	193.65	141.25	205.38	212.08	212.46
Dec-17	236.14	215.57	248.21	174.79	246.89	201.37	188.95	164.78	196.29	143.49	211.1	214.87	216.11
Jan-18	240.61	218.27	251.93	176.68	249.13	205.92	190.98	165.94	198.83	147.19	214.47	217.67	219.73
Feb-18	243.6	222.52	254.76	178.69	254.02	209.47	191.54	170.77	201.11	148.5	220.16	220.6	222.65
Mar-18	246.07	226.68	257.38	180.06	260.28	213.6	192.93	171.25	205.24	150.83	225.93	224.25	225.4
Apr-18	248.17	229.31	258.64	181.16	262.12	217.72	193.83	172.23	207.54	152.61	230.49	228.49	227.58
May-18	252.09	232.24	262.07	183.59	263.81	219.84	195.17	172.8	209.48	153.13	234.05	231.32	230.55
Jun-18	256.72	236.77	265.64	185.6	268.26	223.15	196.28	173.87	211.05	154.68	238.77	234.5	234.13
Jul-18	259.39	240.41	267.99	197.69	274.18	226.57	211.78	175.02	212.51	155.74	244.95	235.47	238.79
Aug-18	264.13	243.64	274.6	202.29	289.45	224.45	215.98	144.21	212.73	157.46	254.01	231.41	241.99
Sep-18	266.47	249.53	275.38	203.96	283.93	226.97	219.94	146.47	219.42	119.82	251.8	240.5	243.02
Oct-18	262.55	241.85	278.15	201.81	285.75	228.72	220.56	147.15	217.34	119.82	270.9	232.25	241.26
Nov-18	270.26	256.4	286.95	207.29	290.83	232.6	223.78	148.09	222.5	120.55	258.64	243.09	247.62
Dec-18	266.29	250.55	283.81	208.13	284.5	246.04	229.18	144.51	215.92	120.55	289.65	227.76	246.9
Jan-19	266.00	260.05	311.87	209.80	294.04	253.14	227.03	145.37	224.03	120.97	279.86	244.01	251.27
Feb-19	269.18	264.64	309.94	209.37	309.97	253.94	225.81	160.61	240.73	121.66	280.52	248.62	254.01
Mar-19	276.29	267.26	316.58	212.03	314.69	257.44	226.29	159.17	231.29	122.27	286.81	250.51	258.69
Apr-19	287.67	280.13	321.05	216.88	322.77	252.71	230.26	159.29	236.17	123.45	284.89	259.34	265.27
May-19	271.03	274.68	331.20	211.64	348.38	291.15	235.67	176.63	227.26	134.65	279.30	267.67	265.07
Jun -19	273.74	275.25	338.34	211.26	359.29	303.77	237.49	178.37	222.02	122.47	281.26	265.58	268.42
Jul-19	279.31	281.22	345.66	217.16	362.95	311.80	250.00	165.16	224.49	122.47	294.50	274.17	274.35
Aug-19	286.00	286.45	334.19	217.52	351.19	345.08	244.26	171.13	219.31	122.47	292.64	258.01	279.34
Sept- 19	288.59	281.58	334.92	218.53	356.37	331.87	250.41	155.92	218.37	122.47	328.86	267.89	279.86
Oct- 19	286.36	280.77	333.75	221.95	358.16	333.1	250.5	155.92	217.99	122.47	327.57	268.52	279.49
Nov- 19	280.04	269.2	333.1	226.15	344.01	343.26	249.99	155.92	223.13	206.57	318.96	263.91	280.04
Dec- 19	280.62	279.46	328.60	229.75	347.76	344.33	255.46	155.90	222.51	206.57	318.99	263.45	281.20

**Table 3.0: (Cont...d)**

	Food and Non-Alcoholic Beverages	Alcoholic Beverages, Tobacco and Narcotics	Clothing and Footwear	Housing, Water, Electricity, Gas and Other Fuels	Furniture, Household Equipment and Household Maintenance	Health	Transport	Communication	Recreation and Culture	Education	Restaurant and Hotels	Miscellaneous Goods and Services	All Items
Jan-20	285.84	288.03	337.24	231.49	347.52	342.89	267.38	155.87	223.65	206.57	339.5	270.3	285.45
Feb-20	291.53	275.23	341.22	233.51	335.71	371.28	268.79	163.83	224.43	206.57	336.83	266.44	291.33
Mar-20	303.57	279.46	349.3	229.35	340.8	382.19	265.91	172.83	231.42	206.57	344.58	277.43	298.95
Apr-20	317.98	284.66	354.54	221.18	347.49	384.89	262.71	172.84	233.56	206.57	349.09	280.92	305.28
May-20	316.02	286.87	358.67	223.69	349.37	389.01	263.61	174.33	233.85	206.57	357.22	284.91	306.07
Jun-20	320.11	291.3	364.95	223.57	355.04	369.92	273.12	176.07	235.21	206.57	361.83	289.13	306.97
Jul-20	327.56	291.48	370.96	223.59	358.21	371.11	276.48	174.35	238.89	206.57	362.60	282.20	310.84
Aug-20	336.69	291.16	377.52	223.35	361.94	378.06	275.26	178.66	239.92	206.57	359.63	288.8	316.56
Sept-20	339.82	287.7	379.9	226.13	365.98	377.54	273.04	175.55	240.98	206.57	346.71	289.35	318.22
Oct-20	325.55	283.86	394.65	221.04	366.29	376.82	269.11	174.19	240.00	206.57	345.1	292.41	312.22
Nov-20	321.94	279.62	391.07	218.08	364.97	380.22	268.45	174.71	235.21	206.57	334.78	286.74	309.82
Dec-20	322.98	296.29	391.52	220.66	370.75	369.95	272.42	180.61	233.02	225.26	334.55	280.34	310.58
Jan-21	339.82	295.96	389.12	222.35	368.9	373.19	270.93	181.26	233.59	225.26	334.71	282.66	318.27
Feb-21	348.63	297.98	385.42	233.09	379.88	360.91	281.87	181.7	234.8	225.26	342.3	286.93	323.01