



STATISTICS SIERRA LEONE
(Stats SL)

Credible Data for National Development

CONSUMER PRICE INDEX DECEMBER 2021 PRESS RELEASE

Released: 21st January, 2022 @ 12: 00 noon

Contact Persons:

Mwaluma Andrew Bryma GEGBE, MA, MSc

Director of National Accounts and Economic Statistics Division

Statistics Sierra Leone

Mobile: +23279442430/ +23288000898

Email: mwaluma.gegbe@statistics.sl

Skype: mwaluma.gegbe

Isata M. ALLIEU-KEIKURA, MSc

Principal Statistician and Head, Price & Labour Statistics Section

National Accounts and Economic Statistics Division

Statistics Sierra Leone

Mobile: +23276580842

Email: isata.allieu-keikura@statistics.sl

Reviewed by

Andrew Bob JOHNNY, MSc

Deputy Statistician General

Statistics Sierra Leone

Email: andrew.johnny@statistics.sl

Approved for release by:

Prof. Osman SANKOH, DSc

Statistician General & CEO

Statistics Sierra Leone

Email: osman.sankoh@statistics.sl

21st January, 2022

CONTENTS

CONTENTS	1
KEY FINDINGS.....	2
HEADLINE NATIONAL INFLATION RATES.....	2
ANNUAL (YEAR-ON-YEAR) CONSUMER PRICE INFLATION: DETAILED BY MAIN COICOP HEADINGS	2
MONTHLY CONSUMER PRICE INFLATION: DETAILED BY MAIN COICOP HEADINGS	3
DECEMBER 2021 CONSUMER PRICE INDEX (CPI): DETAILED BY REGIONS	4
SELECTED INFLATION RATE AND CPI BY MAIN COICOP HEADING.....	5
FOOD AND NON-FOOD COMPONENTS	5

LIST OF TABLES

Table 1: National & Regional Year-on-Year and Monthly Inflation rates.....	4
Table 1.1: National CPI and rates of inflation by main COICOP functions (2008=100)	5
Table 1.2: 2021 Food and Non-food inflation rates	6
Table 2: Year-on-Year and Monthly Inflation Rates	6
Table 3: National Consumer Price Index by Main COICOP Groups (2008=100).....	8

LIST OF FIGURES

Figure 1a: Year-on-Year Percentage Changes in the CPI.....	1
Figure 1b: Monthly Percentage Changes in the CPI.....	1

KEY FINDINGS

HEADLINE NATIONAL INFLATION RATES

Annual National Consumer Price Inflation (year-on-year) for December 2021 stood at 17.94 percent, up by 2.17 percentage points from 15.77 percent in November 2021.

The monthly consumer price inflation for December 2021 is 2.12 percent; up by 1.83 percentage point from 0.29 percent in November, 2021.

ANNUAL (YEAR-ON-YEAR) CONSUMER PRICE INFLATION: DETAILED BY MAIN COICOP¹ HEADINGS

Upward movers

- ✓ Food and non-alcoholic beverages, with weight 41.86 percent, **increased** from 18.84 percent in November 2021 to 19.40 percent in December 2021. The inflation rate increased by 0.56 percentage point year-on-year.
- ✓ Clothing and footwear, with weight 7.34 percent, **increased** from 5.44 percent in November 2021 to 7.06 percent in December 2021. The inflation rate increased by 1.62 percentage point year-on-year.
- ✓ Housing, water, electricity, gas and other fuels, with weight 13.70 percent, **increased** from 16.11 percent in November 2021 to 19.48 percent in December 2021. The inflation rate increased by 3.37 percentage points year-on-year.
- ✓ Furniture, household equipment and household maintenance, with weight 5.86 percent, **increased** from 20.19 percent in November 2021 to 20.53 percent in December 2021. The inflation rate increased by 0.34 percentage point year-on-year.
- ✓ Health, with weight 11.36 percent, **increased** from 3.88 percent in November 2021 to 12.48 percent in December 2021. The inflation rate increased by 8.60 percentage points year-on-year.
- ✓ Communication, with weight 2.04 percent, **increased** from 3.95 percent in November 2021 to 7.17 percent in December 2021. The inflation rate increased by 3.22 percentage points year-on-year.
- ✓ Recreation and culture, with weight 1.47 percent, **increased** from 19.75 percent in November 2021 to 27.51 percent in December 2021. The inflation rate increased by 7.76 percentage points year-on-year.
- ✓ Restaurant and hotels, with weight 0.92 percent, **increased** from 24.30 percent in November 2021 to 30.45 percent in December 2021. The inflation rate increased by 6.15 percentage points year-on-year.
- ✓ Miscellaneous goods and services, with weight 3.11 percent, **increased** from 9.14 percent in November 2021 to 10.81 percent in December 2021. The inflation rate increased by 1.67 percentage point year-on-year.

Downward movers

- ✓ Alcoholic beverages, tobacco and narcotics, with weight 1.71 percent **declined** by 6.32 percentage points from 30.73 percent in November 2021 to 24.41 percent in December 2021.
- ✓ Transport, with weight 7.75 percent, **declined** by 1.45 percentage point from 23.27 percent in November 2021 to 21.82 percent in December 2021.
- ✓ Education services, with weight 2.88 percent, **declined** by 3.88 percentage points from 57.23 percent in November 2021 to 53.35 percent in December 2021.

¹ Classification of Individual Consumption by Purpose

MONTHLY CONSUMER PRICE INFLATION: DETAILED BY MAIN COICOP² HEADINGS

Upward movers

- ✓ Food and non-alcoholic beverages, with weight 41.86 percent, **increased** from -0.55 percent in November 2021 to 0.80 percent in December 2021. The inflation rate increased by 1.35 percentage point year-on-year
- ✓ Alcoholic beverages, tobacco and narcotics, with weight 1.71 percent, **increased** from -0.67 percent in November 2021 to 0.84 percent in December 2021. The inflation rate increased by 1.51 percentage point year-on-year
- ✓ Clothing and footwear, with weight 7.34 percent, **increased** from 0.01 percent in November 2021 to 1.65 percent in December 2021. The inflation rate increased by 1.64 percentage point year-on-year
- ✓ Housing, water, electricity, gas and other fuels, with weight 13.70 percent, **increased** from 0.34 percent in November 2021 to 4.12 percent in December 2021. The inflation rate increased by 3.78 percentage points year-on-year
- ✓ Furniture, household equipment and household maintenance, with weight 5.86 percent **increased** from 1.83 percent in November 2021 to 1.87 percent in December 2021. The inflation rate increased by 0.04 percentage point year-on-year
- ✓ Health, with weight 11.36 percent, **increased** from 0.48 percent in November 2021 to 5.35 percent in December 2021. The inflation rate increased by 4.87 percentage points year-on-year.
- ✓ Communication, with weight 2.04 percent, **increased** from 1.74 percent in November 2021 to 6.58 percent in December 2021. The inflation rate increased by 4.84 percentage points year-on-year.
- ✓ Recreation and culture, with weight 1.47 percent, **increased** from 5.12 percent in November 2021 to 5.49 percent in December 2021. The inflation rate increased by 0.37 percentage point year-on-year.
- ✓ Restaurant and hotels, with weight 0.92 percent, **increased** from 1.66 percent in November 2021 to 4.87 percent in December 2021. The inflation rate increased by 3.21 percentage points year-on-year.

Downward movers

- ✓ Transport, with weight 7.75 percent **declined** by 0.25 percentage point from 0.54 percent in November 2021 to 0.29 percent in December 2021.
- ✓ Education services, with weight 2.88 percent **declined** by 1.90 percentage point from 8.25 percent in November 2021 to 6.35 percent in December 2021.
- ✓ Miscellaneous goods and services, with weight 3.11 percent **declined** by 1.98 percentage point from 1.24 percent in November 2021 to -0.74 percent in December 2021.

² Classification of Individual Consumption by Purpose

DECEMBER 2021 CONSUMER PRICE INDEX (CPI): DETAILED BY REGIONS

The National Monthly CPI (2008=100) increased from 358.69 in November 2021 to 366.30 in December 2021, resulting to 2.12 percent inflation this month. The national year-on-year inflation for December 2021 stood at 17.94 percent, indicating an upwards trend compared to 15.77 percent in November 2021.

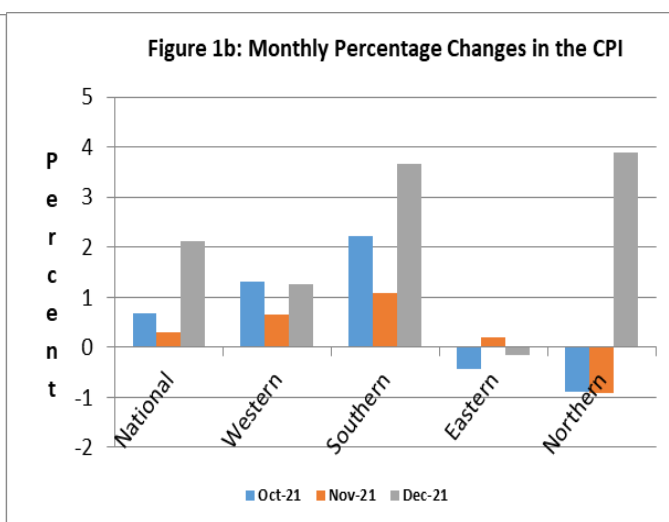
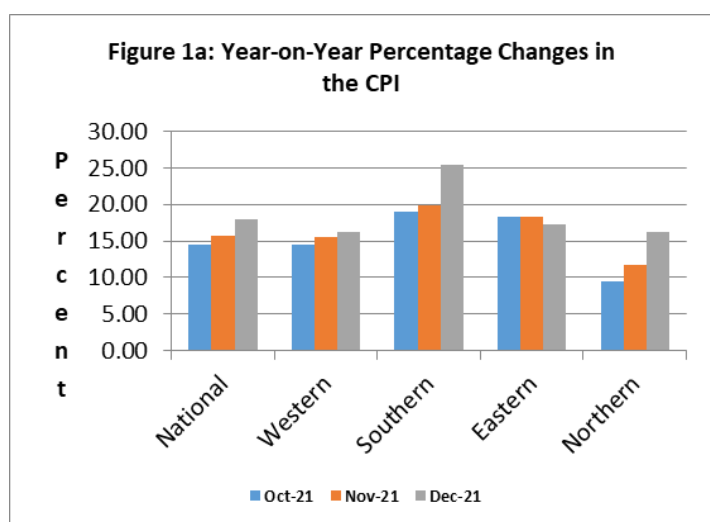
Three regions show an upward movement: Southern region from 19.94 percent in November to 25.40 percent in December 2021, Northern region from 11.72 percent in November 2021 to 16.23 percent in December 2021, Western region from 15.55 percent in November 2021 to 16.16 percent in December 2021, while the Eastern region moved downwards from 18.38 percent in November 2021 to 17.32 percent in December 2021.

Table 1: National and Regional Year-on-Year and Monthly Inflation rates

2008=100										
Month	National		Western Area		Eastern Region		Southern Region		Northern Region	
	Year-on-Year	Monthly	Year-on-Year	Monthly	Year-on-Year	Monthly	Year-on-Year	Monthly	Year-on-Year	Monthly
Nov, 2021	15.77	0.29	15.55	0.66	18.38	0.19	19.94	1.08	11.72	-0.91
Dec, 2021	17.94	2.12	16.16	1.26	17.32	-0.16	25.40	3.66	16.23	3.90

It is observed from the table above that the year-on-year inflation rates for the Southern, is above the national estimate for the month of December, 2021; while Eastern, Northern, and Western regions estimate are below.

Figures 1a and 1b below illustrate the last three months' estimates of the year-on-year inflation and monthly inflation respectively at National and Regional levels.



SELECTED INFLATION RATES AND CPI BY MAIN COICOP HEADING

Table 1.1 below shows the National CPI of the months of December 2020 and December, 2021; as well as the 12 months change in the CPI for the main COICOP functions.

Table 1.1: National CPI and rates of inflation by main COICOP functions (2008=100)

COICOP	WEIGHT	Dec-20	Sep-21	Oct-21	Nov-21	Dec-21	Monthly Inflation	3 Months Change Inflation	12 Months Inflation
		Month Previous Year-	Month m-2 for Current Year	Month m-1 for Current Year	Month m for Current Year	Month m for Current Year			
Food and Non-Alcoholic Beverages	41.86	322.98	384.95	384.71	382.58	385.63	0.80	0.18	19.40
Alcoholic Beverages, Tobacco and Narcotics	1.71	296.29	368.78	368.01	365.54	368.60	0.84	-0.05	24.41
Clothing and Footwear	7.34	391.52	398.73	412.32	412.36	419.16	1.65	5.12	7.06
Housing, Water, Electricity, Gas and Other Fuels	13.70	220.66	252.75	252.35	253.22	263.65	4.12	4.31	19.48
Furniture, Household Equipment and Household Maintenance	5.86	370.75	427.85	430.74	438.64	446.85	1.87	4.44	20.53
Health	11.36	369.95	392.03	393.07	394.97	416.11	5.35	6.14	12.48
Transport	7.75	272.42	330.03	329.13	330.92	331.87	0.29	0.56	21.82
Communication	2.04	180.61	178.49	178.50	181.61	193.56	6.58	8.44	7.17
Recreation and Culture	1.47	233.02	256.14	267.95	281.67	297.12	5.49	16.00	27.51
Education	2.88	225.26	270.24	300.05	324.79	345.43	6.35	27.82	53.35
Restaurant and Hotels	0.92	334.55	406.04	409.33	416.14	436.41	4.87	7.48	30.45
Miscellaneous Goods & Services	3.11	280.34	303.19	309.13	312.96	310.65	-0.74	2.46	10.81
All Items	100	310.58	355.22	357.66	358.69	366.30	2.12	3.12	17.94

FOOD³ AND NON-FOOD⁴ COMPONENTS

Food and non-alcoholic items inflation increased by 0.56 percentage point from 18.84 percent in November 2021 to 19.40 percent in December 2021. In that division, food price increased by 0.8 percent and the non-alcoholic beverages increased by 4.1 percent; the major cause of increase in the division. In the Food sub-division (Group), the following are the key increases: wheat flour by 9 percent, spaghetti by 9 percent, sheep head fish by 11 percent and palm oil unrefined by 6 percent. Also, among vegetables and fruits major increases were noticed in oranges by 40 percent, yellow plantain by 17 percent, natural groundnut by 39 percent, cabbage by 16 percent, sweet potatoes leaves by 9 percent, round onion by 8 percent, tomato round by 19 percent, eggplant (aubergine) by 15 percent, sorrel leaves by 22 percent, garlic by 5 percent and yellow and red pepper by 35 percent.

The non-food items inflation increased by 3.47 percentage points from 13.28 in November 2021 to 16.75 percent in December 2021. In the non-food category, eight divisions went up and three went down. Drastic increases were noticed in Health, by 8.6 percentage points; Recreation and Culture, by 7.76 percentage points and Restaurant and Hotels, by 6.15 percentage points.

NOTE: The National CPI measures the change in prices, on average, from month to month, of the goods and services bought by households, in Freetown, Bo, Kenema, Kono and Makeni and include all expenditure groups. Prices are collected for at least 436 items. All prices collected are the prevailing retail market prices from six (6) markets in Freetown and, three (3) Markets each in Bo, Kenema, Makeni and Kono for weekly prices and other outlets for monthly items whose prices are less likely to fluctuate rapidly. We are using the Modified Laspeyres formula to compute indices according to the Classification of Individual Consumption by Purpose (COICOP) with 12 functions.

³ Food and Non-Alcoholic Beverages

⁴ All other main COICOP Functions/divisions excluding Food and Non-Alcoholic Beverages

Table 1.2: 2021 Food and Non-food inflation rates

Items	Jan	Feb	Mar	April	May	June	July	Aug	Sept	Oct	Nov	Dec
Food and Non-alcoholic Beverages	18.88	19.59	15.45	15.64	17.56	17.12	15.40	14.88	13.28	18.17	18.84	19.40
Non-food	5.87	4.24	3.88	4.67	3.57	4.53	6.40	7.48	10.21	11.59	13.28	16.75

Table 2: Year-on-Year and Monthly Inflation Rates

	National CPI (2008=100)			Western Area/Freetown CPI (2008=100)		
	CPI	Year-on- Year % Change	Monthly Change	CPI	Year-on – Year % Change	Monthly Change
2017						
January	191.59	18.66	2.24	197.56	18.64	2.58
February	194.63	19.82	1.59	200.70	19.72	1.59
March	196.15	20.22	0.78	202.36	20.16	0.83
April	197.66	19.80	0.77	204.09	19.81	0.85
May	198.72	18.91	0.54	204.49	18.09	0.20
June	200.85	19.14	1.07	206.40	18.07	0.93
July	202.87	18.56	1.01	207.94	18.33	0.75
August	204.75	18.01	0.93	209.55	17.17	0.77
September	206.35	17.83	0.78	211.50	17.56	0.93
October	207.88	16.86	0.74	212.93	16.30	0.67
November	212.46	16.26	2.20	217.34	16.45	2.07
December	216.11	15.33	1.72	220.98	14.74	1.67
Average	202.50	18.28	1.20	207.99	17.92	1.15
2018						
January	219.73	14.69	1.68	223.74	13.25	1.25
February	222.65	14.40	1.33	226.02	12.62	1.02
March	225.40	14.91	1.24	228.17	12.76	0.95
April	227.58	15.14	0.97	229.58	12.49	0.62
May	230.55	16.02	1.31	232.64	13.77	1.34
June	234.13	16.57	1.55	235.92	14.31	1.41
July	238.79	17.71	1.99	241.88	16.32	2.52
August	242.00	18.19	1.34	246.79	17.77	2.03
September	243.00	17.77	0.43	245.62	16.13	-0.47
October	241.30	16.06	-0.72	242.86	14.06	-1.12
November	247.60	16.55	2.64	250.50	15.25	3.14
December	246.90	14.25	-0.29	247.61	12.05	-1.15
Average	234.97	16.02	1.12	237.61	14.23	0.96

More information can also be obtained from our website: www.statistics.sl

For more detailed Information: Subscribe to the Detailed CPI Report. Please Contact:
The Statistician General, Statistics Sierra Leone, P. O. Box 595, Tower Hill, Freetown, SIERRA LEONE
E-mail: statistics@statistics.sl or info@statistics.sl

Table 2: (Cont'd)

	National CPI (2008=100)			Western Area/Freetown CPI (2008=100)		
	CPI	Year-on- Year % Change	Monthly Change	CPI	Year-on – Year % Change	Monthly Change
2019						
January	251.27	14.35	1.77	249.40	11.47	0.72
February	254.01	14.08	1.09	257.62	13.98	3.30
March	258.69	14.77	1.84	262.29	14.95	1.81
April	265.27	16.56	2.54	267.74	16.62	2.08
May	265.07	14.97	-0.08	266.18	14.41	-0.58
June	268.42	14.65	1.26	269.19	14.10	1.13
July	274.35	14.89	2.21	271.38	12.20	0.81
August	279.34	15.43	1.82	279.90	13.41	3.14
September	279.86	15.16	0.19	276.56	12.59	-1.19
October	279.49	15.85	-0.13	281.63	15.96	1.83
November	280.04	13.09	0.20	289.71	15.66	2.87
December	281.20	13.89	0.41	294.07	18.76	1.50
Average	269.75	14.81	1.09	272.14	14.51	1.45
2020						
January	285.45	13.60	1.51	299.50	20.09	1.84
February	291.33	14.69	2.06	306.04	18.79	2.18
March	298.95	15.56	2.62	310.61	18.42	1.49
April	305.28	15.08	2.12	315.76	17.94	1.66
May	306.07	15.47	0.26	319.41	20.00	1.15
Jun	306.97	14.36	0.29	315.75	17.29	-1.15
Jul	310.84	13.30	1.26	321.21	18.36	1.73
Aug	316.56	13.32	1.84	325.23	16.20	1.25
Sept	318.22	13.71	0.52	328.56	18.81	1.02
Oct	312.22	11.71	-1.89	318.35	13.04	-3.11
Nov	309.82	10.63	-0.77	317.68	9.65	-0.21
Dec	310.58	10.45	0.25	320.01	8.82	0.73
Average	306.02	13.49	0.84	316.51	16.45	0.72
2021						
January	318.27	11.50	2.48	327.32	9.29	2.28
February	323.01	10.87	1.49	329.15	7.55	0.56
March	325.72	8.95	0.84	335.15	7.90	1.82
April	334.60	9.60	2.73	341.38	8.11	1.86
May	336.08	9.80	0.44	344.07	7.72	0.79
Jun	338.28	10.20	0.65	347.85	10.17	1.10
Jul	343.47	10.50	1.53	349.26	8.73	0.40
Aug	350.99	10.88	2.19	356.38	9.58	2.04
Sept	355.22	11.63	1.21	359.94	9.55	1.00
Oct	357.66	14.55	0.69	364.67	14.55	1.31
Nov	358.69	15.77	0.29	367.09	15.55	0.66
Dec	366.30	17.94	2.12	371.72	16.16	1.26

More information can also be obtained from our website: www.statistics.sl

For more detailed Information: Subscribe to the Detailed CPI Report. Please Contact:
The Statistician General, Statistics Sierra Leone, P. O. Box 595, Tower Hill, Freetown, SIERRA LEONE
E-mail: statistics@statistics.sl or info@statistics.sl

Table 3: National Consumer Price Index by Main COICOP Groups (2008=100)

	Food and Non-Alcoholic Beverages	Alcoholic Beverages, Tobacco and Narcotics	Clothing and Footwear	Housing, Water, Electricity, Gas and Other Fuels	Furniture, Household Equipment and Household Maintenance	Health	Transport	Communication	Recreation and Culture	Education	Restaurant and Hotels	Miscellaneous Goods and Services	All Items
Weight	41.86	1.71	7.34	13.7	5.86	11.36	7.75	2.04	1.47	2.88	0.92	3.13	100
Jan-17	204.76	181.11	216.4	165.98	215.6	183.42	173.05	148.89	180.22	136.84	182.64	187.32	191.59
Feb-17	208.42	186.2	221.43	167.42	221.35	185.87	173.85	150.43	180.65	136.91	182.74	190.46	194.63
Mar-17	210.81	190.78	221.69	167.97	222.42	186.13	176.25	150.52	181.21	137.08	184.93	191.65	196.15
Apr-17	211.73	192.07	224.05	168.43	226.5	188.8	180.03	153.23	181.88	137.21	186.93	193.3	197.66
May-17	212.33	193.55	227.95	168.96	226.53	189.34	183.8	154.16	182.71	137.22	189.74	195.38	198.72
Jun-17	214.56	195.64	233.71	169.47	230.04	191.33	184.16	156.1	185.35	137.51	190.92	197.51	200.85
Jul-17	217.85	197.43	234.78	169.8	231.65	193	184.7	156.96	185.8	137.65	192.15	199.62	202.87
Aug-17	220.49	202.41	235.42	170.01	234.36	194.21	185.1	157.52	186.46	138.55	195.97	203.91	204.75
Sept-17	221.96	204.02	237.81	170.27	237.6	196.62	186.54	160.62	187.72	138.85	199.6	205.61	206.35
Oct-17	223.88	206.03	239.05	170.71	240.1	197.87	187.36	161.93	190.35	139.17	203.05	207.79	207.88
Nov-17	231.59	209.96	242.24	172.65	242.46	199.36	187.63	163.72	193.65	141.25	205.38	212.08	212.46
Dec-17	236.14	215.57	248.21	174.79	246.89	201.37	188.95	164.78	196.29	143.49	211.1	214.87	216.11
Jan-18	240.61	218.27	251.93	176.68	249.13	205.92	190.98	165.94	198.83	147.19	214.47	217.67	219.73
Feb-18	243.6	222.52	254.76	178.69	254.02	209.47	191.54	170.77	201.11	148.5	220.16	220.6	222.65
Mar-18	246.07	226.68	257.38	180.06	260.28	213.6	192.93	171.25	205.24	150.83	225.93	224.25	225.4
Apr-18	248.17	229.31	258.64	181.16	262.12	217.72	193.83	172.23	207.54	152.61	230.49	228.49	227.58
May-18	252.09	232.24	262.07	183.59	263.81	219.84	195.17	172.8	209.48	153.13	234.05	231.32	230.55
Jun-18	256.72	236.77	265.64	185.6	268.26	223.15	196.28	173.87	211.05	154.68	238.77	234.5	234.13
Jul-18	259.39	240.41	267.99	197.69	274.18	226.57	211.78	175.02	212.51	155.74	244.95	235.47	238.79
Aug-18	264.13	243.64	274.6	202.29	289.45	224.45	215.98	144.21	212.73	157.46	254.01	231.41	241.99
Sep-18	266.47	249.53	275.38	203.96	283.93	226.97	219.94	146.47	219.42	119.82	251.8	240.5	243.02
Oct-18	262.55	241.85	278.15	201.81	285.75	228.72	220.56	147.15	217.34	119.82	270.9	232.25	241.26
Nov-18	270.26	256.4	286.95	207.29	290.83	232.6	223.78	148.09	222.5	120.55	258.64	243.09	247.62
Dec-18	266.29	250.55	283.81	208.13	284.5	246.04	229.18	144.51	215.92	120.55	289.65	227.76	246.9
Jan-19	266.00	260.05	311.87	209.80	294.04	253.14	227.03	145.37	224.03	120.97	279.86	244.01	251.27
Feb-19	269.18	264.64	309.94	209.37	309.97	253.94	225.81	160.61	240.73	121.66	280.52	248.62	254.01
Mar-19	276.29	267.26	316.58	212.03	314.69	257.44	226.29	159.17	231.29	122.27	286.81	250.51	258.69
Apr-19	287.67	280.13	321.05	216.88	322.77	252.71	230.26	159.29	236.17	123.45	284.89	259.34	265.27
May-19	271.03	274.68	331.20	211.64	348.38	291.15	235.67	176.63	227.26	134.65	279.30	267.67	265.07
Jun -19	273.74	275.25	338.34	211.26	359.29	303.77	237.49	178.37	222.02	122.47	281.26	265.58	268.42
Jul-19	279.31	281.22	345.66	217.16	362.95	311.80	250.00	165.16	224.49	122.47	294.50	274.17	274.35
Aug-19	286.00	286.45	334.19	217.52	351.19	345.08	244.26	171.13	219.31	122.47	292.64	258.01	279.34
Sept-19	288.59	281.58	334.92	218.53	356.37	331.87	250.41	155.92	218.37	122.47	328.86	267.89	279.86
Oct-19	286.36	280.77	333.75	221.95	358.16	333.1	250.5	155.92	217.99	122.47	327.57	268.52	279.49
Nov-19	280.04	269.2	333.1	226.15	344.01	343.26	249.99	155.92	223.13	206.57	318.96	263.91	280.04
Dec-19	280.62	279.46	328.60	229.75	347.76	344.33	255.46	155.90	222.51	206.57	318.99	263.45	281.20

Table 3: (Cont'd)

	Food and Non-Alcoholic Beverages	Alcoholic Beverages, Tobacco and Narcotics	Clothing and Footwear	Housing, Water, Electricity, Gas and Other Fuels	Furniture, Household Equipment and Household Maintenance	Health	Transport	Communication	Recreation and Culture	Education	Restaurant and Hotels	Miscellaneous Goods and Services	All Items
Jan-20	285.84	288.03	337.24	231.49	347.52	342.89	267.38	155.87	223.65	206.57	339.5	270.3	285.45
Feb-20	291.53	275.23	341.22	233.51	335.71	371.28	268.79	163.83	224.43	206.57	336.83	266.44	291.33
Mar-20	303.57	279.46	349.3	229.35	340.8	382.19	265.91	172.83	231.42	206.57	344.58	277.43	298.95
Apr-20	317.98	284.66	354.54	221.18	347.49	384.89	262.71	172.84	233.56	206.57	349.09	280.92	305.28
May-20	316.02	286.87	358.67	223.69	349.37	389.01	263.61	174.33	233.85	206.57	357.22	284.91	306.07
Jun-20	320.11	291.3	364.95	223.57	355.04	369.92	273.12	176.07	235.21	206.57	361.83	289.13	306.97
Jul-20	327.56	291.48	370.96	223.59	358.21	371.11	276.48	174.35	238.89	206.57	362.60	282.20	310.84
Aug-20	336.69	291.16	377.52	223.35	361.94	378.06	275.26	178.66	239.92	206.57	359.63	288.8	316.56
Sept-20	339.82	287.7	379.9	226.13	365.98	377.54	273.04	175.55	240.98	206.57	346.71	289.35	318.22
Oct-20	325.55	283.86	394.65	221.04	366.29	376.82	269.11	174.19	240.00	206.57	345.1	292.41	312.22
Nov-20	321.94	279.62	391.07	218.08	364.97	380.22	268.45	174.71	235.21	206.57	334.78	286.74	309.82
Dec-20	322.98	296.29	391.52	220.66	370.75	369.95	272.42	180.61	233.02	225.26	334.55	280.34	310.58
Jan-21	339.82	295.96	389.12	222.35	368.9	373.19	270.93	181.26	233.59	225.26	334.71	282.66	318.27
Feb-21	348.63	297.98	385.42	233.09	379.88	360.91	281.87	181.7	234.8	225.26	342.3	286.93	323.01
Mar-21	350.46	307.34	379.79	236.04	380.5	375.08	282.42	178.44	234.79	225.26	340.47	286.5	325.72
Apr-21	367.72	323.95	391.95	237.53	384.85	372.23	283.75	178.44	235.8	225.26	347.52	284.58	334.60
May-21	371.51	321.94	381.95	238.11	386.2	374.83	281.71	178.44	237.05	225.26	366.66	286.37	336.08
Jun-21	374.91	326.78	386.54	242.28	394.52	370.73	283.15	178.43	238.84	226.47	367.94	279.34	338.28
Jul-21	378.02	348.37	392.67	243.15	414.87	374.34	306.49	178.46	242.27	226.47	372.44	285.39	343.47
Aug-21	386.8	361.65	399.51	249.52	414.23	380.56	330.59	178.49	245.62	226.47	373.87	287.07	350.99
Sept-21	384.95	368.78	398.73	252.75	427.85	392.03	330.03	178.49	256.14	270.24	406.04	303.19	355.22
Oct-21	384.71	368.01	412.32	252.35	430.74	393.07	329.13	178.5	267.95	300.05	409.33	309.13	357.66
Nov-21	382.58	365.54	412.36	253.22	438.64	394.97	330.92	181.61	281.67	324.79	416.14	312.96	358.69
Dec-21	385.63	368.6	419.16	263.65	446.85	416.11	331.87	193.56	297.12	345.43	436.41	310.65	366.30