



STATISTICS SIERRA LEONE
(Stats SL)

Credible Data for National Development

CONSUMER PRICE INDEX SEPTEMBER 2020 PRESS RELEASE

Released: 20th October, 2020 @ 12: 00 noon

Contact Persons:

Mwaluma Andrew Bryma GEGBE, MA, MSc

Director of National Accounts and Economic Statistics Division
Statistics Sierra Leone

Mobile: +23279442430/ +23288000898

Email: mwaluma.gegbe@statistics.sl

Skype: mwaluma.gegbe

Isata M. ALLIEU-KEIKURA, MSc

Principal Statistician and Head, Price & Labour Statistics Section
National Accounts and Economic Statistics Division
Statistics Sierra Leone

Mobile: +23276580842

Email: isata.allieu-keikura@statistics.sl

Reviewed by

Andrew Bob JOHNNY, MSc

Deputy Statistician General
Statistics Sierra Leone

Email: andrew.johnny@statistics.sl

Approved for release by:

Prof. Osman SANKOH, DSc

Statistician General & CEO
Statistics Sierra Leone

Email: osman.sankoh@statistics.sl

20th October 2020

CONTENTS

Contents.....	i
Key Finding.....	ii
Detailed Explanation on the September, 2020 Consumer Price Index (CPI)	1
Figure 1a: Year-on-Year Percentage Changes in the CPI.....	1
Figure 1b: Monthly Percentage Changes in the CPI.....	1
Table 1.0: Regional Year-on-Year and Monthly Inflation rates.....	1
Table 1.1: National CPI and Year-on-Year Rates of Inflation by Main COICOP Groups (2008=100).....	2
Table 1.2: 2020 Food and Non-food inflation rates	3
Table 2.0: Year-on-Year and Monthly Inflation Rates.....	3
Table 3.0: National Consumer Price Index by Main COICOP Groups (2008=100).....	4

More information can also be obtained from our website: www.statistics.sl

For more detailed information: Subscribe to the Detailed CPI Report. Please Contact:

The Statistician General, Statistics Sierra Leone, P. O. Box 595, Tower Hill, Freetown, SIERRA LEONE

E-mail: statistics@statistics.sl or info@statistics.sl

KEY FINDINGS

Headline National Inflation Rates

Annual National Consumer Price Inflation (year-on-year) went up by 0.39 percentage point from 13.32 percent in August 2020 to 13.71 percent in September 2020.

The monthly consumer price inflation for September 2020 is 0.52 percent; went down by 1.32 percentage point from 1.84 percent in August, 2020.

Contributions to headline annual (year-on-year) consumer price inflation

- ✓ Food and non-alcoholic beverages increased from 17.72 percent in August 2020 to 17.75 percent in September 2020. The inflation rate increased by 0.03 percentage point year-on-year.
- ✓ Alcoholic beverages, tobacco and narcotics increased from 1.64 percent in August 2020 to 2.17 percent in September 2020. The inflation rate increased by 0.53 percentage point year-on-year.
- ✓ Clothing and footwear increased from 12.97 percent in August 2020 to 13.43 percent in September 2020. The inflation rate increased by 0.46 percentage point year-on-year.
- ✓ Housing, water, electricity, gas and other fuels increased from 2.68 percent in August 2020 to 3.48 percent in September 2020. The inflation rate increased by 0.80 percentage point year-on-year.
- ✓ Furniture, household equipment and household declined by 0.36 percentage point from 3.06 percent in August 2020 to 2.70 percent in September 2020.
- ✓ Health increased from 9.56 percent in August 2020 to 13.76 percent in September 2020. The inflation rate increased by 4.20 percentage point year-on-year.
- ✓ Transport declined by 3.65 percentage point from 12.69 percent in August 2020 to 9.04 percent in September 2020.
- ✓ Communication increased from 4.40 percent in August 2020 to 12.59 percent in September 2020. The inflation rate increased by 8.19 percentage point year-on-year.
- ✓ Recreation and Culture increased from 9.40 percent in August 2020 to 10.35 percent in September 2020. The inflation rate increased by 0.95 percentage point year-on-year.
- ✓ For Education, no change between August, 2020 and September, 2020.
- ✓ Restaurant and hotels declined by 17.46 percentage points from 22.89 percent in August 2020 to 5.43 percent in September 2020.
- ✓ Miscellaneous goods and services declined by 3.92 percentage points from 11.93 percent in August 2020 to 8.01 percent in September 2020.

More information can also be obtained from our website: www.statistics.sl

For more detailed information: Subscribe to the Detailed CPI Report. Please Contact:

The Statistician General, Statistics Sierra Leone, P. O. Box 595, Tower Hill, Freetown, SIERRA LEONE

E-mail: statistics@statistics.sl or info@statistics.sl

Contributions to monthly consumer price inflation

- ✓ Food and non-alcoholic beverages declined by 1.86 percentage point from 2.79 percent in August 2020 to 0.93 percent in September 2020.
- ✓ Alcoholic beverages, tobacco and narcotics declined by 1.08 percentage point from -0.11 percent in August 2020 to -1.19 percent in September 2020.
- ✓ Clothing and footwear declined by 1.14 percentage point from 1.77 percent in August 2020 to 0.63 percent in September 2020.
- ✓ Housing, water, electricity, gas and other fuels increased from -0.11 percent in August 2020 to 1.24 percent in September 2020. The inflation rate increased by 1.35 percentage point year-on-year.
- ✓ Furniture, household equipment and household increased from 1.04 percent in August 2020 to 1.12 percent in September 2020. The inflation rate increased by 0.08 percentage point year-on-year.
- ✓ Health declined by 2.01 percentage point from 1.87 percent in August 2020 to -0.14 percent in September 2020.
- ✓ Transport declined by 0.37 percentage points from -0.44 percent in August 2020 to -0.81 percent in September 2020.
- ✓ Communication declined by 4.21 percentage points from 2.47 percent in August 2020 to -1.74 percent in September 2020.
- ✓ Recreation and Culture increased from 0.43 percent in August 2020 to 0.44 percent in September 2020. The inflation rate increased by 0.01 percentage point year-on-year.
- ✓ For Education, no change is noticed between August, 2020 and September, 2020.
- ✓ Restaurants and hotels declined by 2.77 percentage point from -0.82 percent in August 2020 to -3.59 percent in September 2020.
- ✓ Miscellaneous goods and services declined by 2.15 percentage point from 2.34 percent in August 2020 to 0.19 percent in September 2020.

DETAILED EXPLANATION ON THE SEPTEMBER, 2020 CONSUMER PRICE INDEX (CPI)

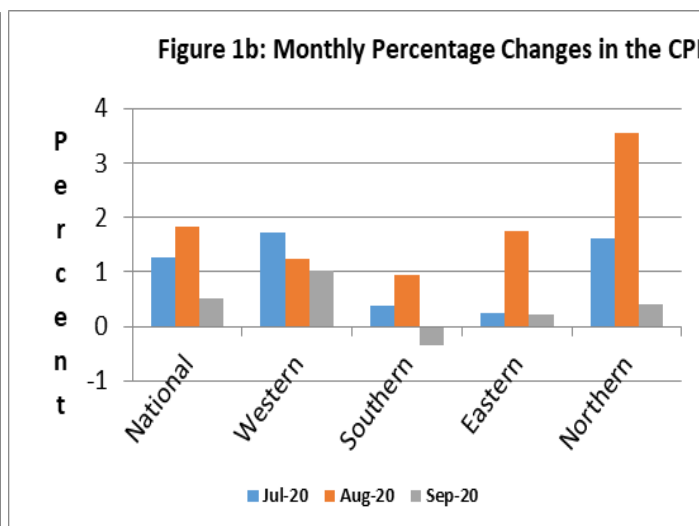
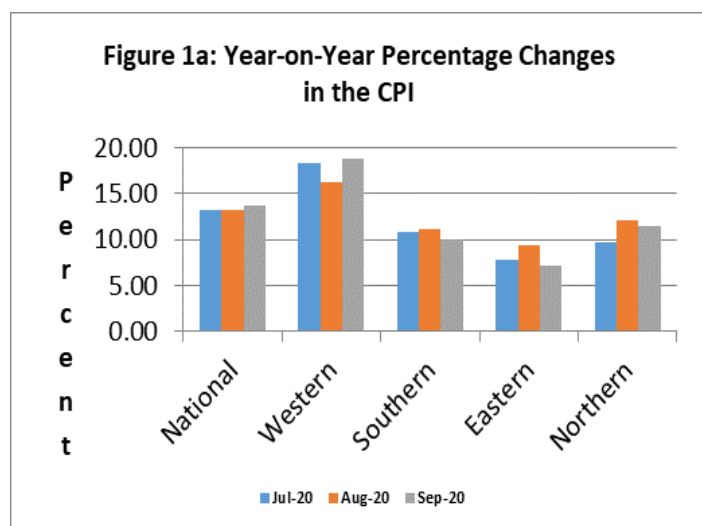
The National Monthly CPI (2008=100) increased from 316.56 in August 2020 to 318.22 in September 2020 resulting to 0.52 percent inflation this month. The national year-on-year inflation for September 2020 is 13.71 percent, which indicates an upward trend compared to 13.32 percent in August 2020. Three regions show downward movements: Eastern region from 9.48 percent in August 2020 to 7.16 percent in September 2020, Southern region from 11.12 percent in August 2020 to 10.10 percent in September 2020 and Northern region from 12.18 percent in August 2020 to 11.52 percent in September 2020. On the other hand, the Western region increased from 16.20 percent in August 2020 to 18.81 percent in September 2020.

Table 1.0: National & Regional Year-on-Year and Monthly Inflation rates

2008=100										
Month	National		Western Area		Eastern Region		Southern Region		Northern Region	
	Year-on-Year	Monthly	Year-on-Year	Monthly	Year-on-Year	Monthly	Year-on-Year	Monthly	Year-on-Year	Monthly
Aug., 2020	13.32	1.84	16.20	1.25	9.48	1.75	11.12	0.94	12.18	3.56
Sept, 2020	13.71	0.52	18.81	1.02	7.16	0.22	10.10	-0.35	11.52	0.41

It is observed from the table above that the year-on-year inflation rates for the Western Area is above the national estimate for the month of September, 2020; while Northern, Southern and Eastern regions are below. The monthly inflation for all four regions declined: Eastern region to 0.22, Southern region to -0.35, Northern region to 0.41 and Western region to 1.02; which is the only region above the national estimate.

Figures 1a & 1b below illustrate the last three months' estimates of the year-on-year inflation and monthly inflation respectively at National and Regional levels.



FACTORS INFLUENCING CHANGES IN THE MONTHLY RATE OF INFLATION

The monthly price inflation of 0.52 percent reflects a general change in the price level in all the four regions which affected all of the items in the CPI basket. In September, three indices increased and nine others declined including food and non-alcoholic beverages to 0.93 percent; alcoholic beverages, tobacco and narcotics to -1.19 percent; clothing and footwear to 0.63 percent, health to -0.14 percent; transport to -0.81 percent; communication to -1.74 percent, restaurants & hotels to -3.59 percent and miscellaneous goods and services to 0.19 percent.

Table 1.1 below shows the National CPI of the months of September, 2019 and September, 2020; as well as the 12 months change in the CPI for the main COICOP functions.

Table 1.1: National CPI and Year-on-Year Rates of Inflation by Main COICOP Divisions (2008=100)

COICOP	WEIGHT	Sept-19	Jun-20	Jul-20	Aug-20	Sept-20	Monthly Inflation	3 Months Change Inflation	12 Months Inflation
		Month Previous Year-	Month m-2 for Current Year	Month m-1 for Current Year	Month m for Current Year	Month m for Current Year			
Food and Non-Alcoholic Beverages	41.86	288.59	320.11	327.56	336.69	339.82	0.93	6.16	17.75
Alcoholic Beverages, Tobacco and Narcotics	1.71	281.58	291.30	291.48	291.16	287.70	-1.19	-1.24	2.17
Clothing and Footwear	7.34	334.92	364.95	370.96	377.52	379.90	0.63	4.10	13.43
Housing, Water, Electricity, Gas and Other Fuels	13.70	218.53	223.57	223.59	223.35	226.13	1.24	1.15	3.48
Furniture, Household Equipment and Household Maintenance	5.86	356.37	355.04	358.21	361.94	365.98	1.12	3.08	2.70
Health	11.36	331.87	369.92	371.11	378.06	377.54	-0.14	2.06	13.76
Transport	7.75	250.41	273.12	276.48	275.26	273.04	-0.81	-0.03	9.04
Communication	2.04	155.92	176.07	174.35	178.66	175.55	-1.74	-0.30	12.59
Recreation and Culture	1.47	218.37	235.21	238.89	239.92	240.98	0.44	2.45	10.35
Education	2.88	122.47	206.57	206.57	206.57	206.57	0.00	0.00	68.67
Restaurant and Hotels	0.92	328.86	361.83	362.60	359.63	346.71	-3.59	-4.18	5.43
Miscellaneous Goods and Services	3.13	267.89	289.13	282.20	288.80	289.35	0.19	0.08	8.01
All Items	100	279.86	306.97	310.84	316.56	318.22	0.52	3.66	13.71

The National CPI measures the change in prices, on average, from month to month, of the goods and services bought by households, in Freetown, Bo, Kenema, Kono and Makeni and include all expenditure groups. Prices are collected for at least 436 items. All prices collected are the prevailing retail market prices from six (6) markets in Freetown and, three (3) Markets each in Bo, Kenema, Makeni and Kono for weekly prices and other outlets for monthly items whose prices are less likely to fluctuate rapidly. We are using the Modified Laspeyres formula to compute indices according to the Classification of Individual Consumption by Purpose (COICOP) with 12 functions.

More information can also be obtained from our website: www.statistics.sl

For more detailed Information: Subscribe to the Detailed CPI Report. Please Contact:
The Statistician General, Statistics Sierra Leone, P. O. Box 595, Tower Hill, Freetown, SIERRA LEONE
E-mail: statistics@statistics.sl or info@statistics.sl

Food¹ and Non-Food² Components (year-on-year)

Food items inflation increased by 0.03 percentage point from 17.72 percent in August 2020 to 17.75 percent in September 2020. Food price increase was mainly due to increase in prices of the following items: 22 percent increase in round onions, 18 percent increase in smoked fish, 17 percent increases in frozen chicken and dried pepper and 12 percent increase in ginger. Non-food items inflation increased by 0.62 percentage point from 9.84 in August 2020 to 10.46 percent in September 2020. The most upward movers in the non-food basket were: Communications (by 8.19 percentage points), Health (by 4.20 percentage points) and Recreation and Culture (by 0.95 percentage points). However, there was a significant downward movement in Restaurant and Hotels by 17.46 percentage points and in Transport by 3.65 percentage points.

Table 1.2: 2020 Food and Non-food inflation rates

Items	Jan	Feb	Mar	April	May	June	July	August	Sept
Food	7.46	8.30	9.87	10.54	16.60	16.94	17.27	17.72	17.75
Non-food	18.77	20.08	20.44	19.08	14.58	12.33	10.18	9.84	10.46

Table 2.0: Year-on-Year and Monthly Inflation Rates

	National CPI (2008=100)			Western Area/Freetown CPI (2008=100)		
	CPI	Year-on-Year % Change	Monthly Change	CPI	Year-on-Year % Change	Monthly Change
2017						
January	191.59	18.66	2.24	197.56	18.64	2.58
February	194.63	19.82	1.59	200.70	19.72	1.59
March	196.15	20.22	0.78	202.36	20.16	0.83
April	197.66	19.80	0.77	204.09	19.81	0.85
May	198.72	18.91	0.54	204.49	18.09	0.20
June	200.85	19.14	1.07	206.40	18.07	0.93
July	202.87	18.56	1.01	207.94	18.33	0.75
August	204.75	18.01	0.93	209.55	17.17	0.77
September	206.35	17.83	0.78	211.50	17.56	0.93
October	207.88	16.86	0.74	212.93	16.30	0.67
November	212.46	16.26	2.20	217.34	16.45	2.07
December	216.11	15.33	1.72	220.98	14.74	1.67
Average	202.50	18.28	1.20	207.99	17.92	1.15

¹ Food and Non-Alcoholic Beverages

² All other divisions excluding Food and Non-Alcoholic Beverages

Table 2.0: Cont....

	National CPI (2008=100)			Western Area/Freetown CPI (2008=100)		
	CPI	Year-on-Year % Change	Monthly Change	CPI	Year-on-Year % Change	Monthly Change
2018						
January	219.73	14.69	1.68	223.74	13.25	1.25
February	222.65	14.40	1.33	226.02	12.62	1.02
March	225.40	14.91	1.24	228.17	12.76	0.95
April	227.58	15.14	0.97	229.58	12.49	0.62
May	230.55	16.02	1.31	232.64	13.77	1.34
June	234.13	16.57	1.55	235.92	14.31	1.41
July	238.79	17.71	1.99	241.88	16.32	2.52
August	242.00	18.19	1.34	246.79	17.77	2.03
September	243.00	17.77	0.43	245.62	16.13	-0.47
October	241.30	16.06	-0.72	242.86	14.06	-1.12
November	247.60	16.55	2.64	250.50	15.25	3.14
December	246.90	14.25	-0.29	247.61	12.05	-1.15
Average	234.97	16.02	1.12	237.61	14.23	0.96
2019						
January	251.27	14.35	1.77	249.40	11.47	0.72
February	254.01	14.08	1.09	257.62	13.98	3.30
March	258.69	14.77	1.84	262.29	14.95	1.81
April	265.27	16.56	2.54	267.74	16.62	2.08
May	265.07	14.97	-0.08	266.18	14.41	-0.58
June	268.42	14.65	1.26	269.19	14.10	1.13
July	274.35	14.89	2.21	271.38	12.20	0.81
August	279.34	15.43	1.82	279.90	13.41	3.14
September	279.86	15.16	0.19	276.56	12.59	-1.19
October	279.49	15.85	-0.13	281.63	15.96	1.83
November	280.04	13.09	0.20	289.71	15.66	2.87
December	281.20	13.89	0.41	294.07	18.76	1.50
Average	269.75	14.81	1.09	272.14	14.51	1.45
2020						
January	285.45	13.60	1.51	299.50	20.09	1.84
February	291.33	14.69	2.06	306.04	18.79	2.18
March	298.95	15.56	2.62	310.61	18.42	1.49
April	305.28	15.08	2.12	315.76	17.94	1.66
May	306.07	15.47	0.26	319.41	20.00	1.15
Jun	306.97	14.36	0.29	315.75	17.29	-1.15
Jul	310.84	13.30	1.26	321.21	18.36	1.73
Aug	316.56	13.32	1.84	325.23	16.20	1.25
Sept	318.22	13.71	0.52	328.56	18.81	1.02

More information can also be obtained from our website: www.statistics.sl

For more detailed Information: Subscribe to the Detailed CPI Report. Please Contact:
The Statistician General, Statistics Sierra Leone, P. O. Box 595, Tower Hill, Freetown, SIERRA LEONE
E-mail: statistics@statistics.sl or info@statistics.sl

Table 3.0: National Consumer Price Index by Main COICOP Groups (2008=100)

	Food and Non-Alcoholic Beverages	Alcoholic Beverages, Tobacco and Narcotics	Clothing and Footwear	Housing, Water, Electricity, Gas and Other Fuels	Furniture, Household Equipment and Household Maintenance	Health	Transport	Communication	Recreation and Culture	Education	Restaurant and Hotels	Miscellaneous Goods and Services	All Items
Weight	41.86	1.71	7.34	13.7	5.86	11.36	7.75	2.04	1.47	2.88	0.92	3.13	100
Jan-16	170.36	152.47	169.99	145.74	177.58	163.18	144.44	130.14	154.92	126.34	153.31	152.88	161.46
Feb-16	171.54	152.62	171.01	146.41	178.05	164.29	144.51	130.39	156.42	126.97	157.65	153.68	162.44
Mar-16	172.4	153.87	171.48	146.79	178.88	164.84	144.91	130.4	162.12	127.06	158.59	154.42	163.16
Apr-16	175.07	154.98	173.33	147.2	179.71	167.24	145.24	130.53	163.02	127.91	159.73	155.48	164.99
May-16	177.33	157.43	177.21	147.75	182.84	169.79	149.09	130.56	164.25	128.18	159.44	157.01	167.12
Jun-16	179.4	159.59	179.49	149.56	184.78	168.89	149.79	132.34	165.5	128.4	160.07	157.72	168.58
Jul-16	182.88	160.87	183.52	150.46	187.58	171.16	149.65	133.7	167.86	129.21	161.13	159.48	171.11
Aug-16	186.78	162.19	185.77	151.09	192.19	172.42	150.21	133.81	169.31	129.38	161.47	159.52	173.5
Sep-16	187.72	164.38	187.75	152.38	193.4	177.12	150.71	134.75	170.37	133.23	162.07	160	175.13
Oct-16	190.45	166.36	190.81	152.59	196.42	181.38	151.95	135.41	174.46	135.65	163.86	169.43	177.89
Nov-16	194.83	171.07	198.03	160.05	202.6	181.71	162.58	140.13	174.81	136.54	170.53	176.28	182.74
Dec-16	200.23	175.3	205.36	164.61	209.1	182.92	165.11	145.55	176.87	136.64	175.86	183.31	187.39
Jan-17	204.76	181.11	216.4	165.98	215.6	183.42	173.05	148.89	180.22	136.84	182.64	187.32	191.59
Feb-17	208.42	186.2	221.43	167.42	221.35	185.87	173.85	150.43	180.65	136.91	182.74	190.46	194.63
Mar-17	210.81	190.78	221.69	167.97	222.42	186.13	176.25	150.52	181.21	137.08	184.93	191.65	196.15
Apr-17	211.73	192.07	224.05	168.43	226.5	188.8	180.03	153.23	181.88	137.21	186.93	193.3	197.66
May-17	212.33	193.55	227.95	168.96	226.53	189.34	183.8	154.16	182.71	137.22	189.74	195.38	198.72
Jun-17	214.56	195.64	233.71	169.47	230.04	191.33	184.16	156.1	185.35	137.51	190.92	197.51	200.85
Jul-17	217.85	197.43	234.78	169.8	231.65	193	184.7	156.96	185.8	137.65	192.15	199.62	202.87
Aug-17	220.49	202.41	235.42	170.01	234.36	194.21	185.1	157.52	186.46	138.55	195.97	203.91	204.75
Sept-17	221.96	204.02	237.81	170.27	237.6	196.62	186.54	160.62	187.72	138.85	199.6	205.61	206.35
Oct-17	223.88	206.03	239.05	170.71	240.1	197.87	187.36	161.93	190.35	139.17	203.05	207.79	207.88
Nov-17	231.59	209.96	242.24	172.65	242.46	199.36	187.63	163.72	193.65	141.25	205.38	212.08	212.46
Dec-17	236.14	215.57	248.21	174.79	246.89	201.37	188.95	164.78	196.29	143.49	211.1	214.87	216.11
Jan-18	240.61	218.27	251.93	176.68	249.13	205.92	190.98	165.94	198.83	147.19	214.47	217.67	219.73
Feb-18	243.6	222.52	254.76	178.69	254.02	209.47	191.54	170.77	201.11	148.5	220.16	220.6	222.65
Mar-18	246.07	226.68	257.38	180.06	260.28	213.6	192.93	171.25	205.24	150.83	225.93	224.25	225.4
Apr-18	248.17	229.31	258.64	181.16	262.12	217.72	193.83	172.23	207.54	152.61	230.49	228.49	227.58
May-18	252.09	232.24	262.07	183.59	263.81	219.84	195.17	172.8	209.48	153.13	234.05	231.32	230.55
Jun-18	256.72	236.77	265.64	185.6	268.26	223.15	196.28	173.87	211.05	154.68	238.77	234.5	234.13
Jul-18	259.39	240.41	267.99	197.69	274.18	226.57	211.78	175.02	212.51	155.74	244.95	235.47	238.79
Aug-18	264.13	243.64	274.6	202.29	289.45	224.45	215.98	144.21	212.73	157.46	254.01	231.41	241.99
Sep-18	266.47	249.53	275.38	203.96	283.93	226.97	219.94	146.47	219.42	119.82	251.8	240.5	243.02
Oct-18	262.55	241.85	278.15	201.81	285.75	228.72	220.56	147.15	217.34	119.82	270.9	232.25	241.26
Nov-18	270.26	256.4	286.95	207.29	290.83	232.6	223.78	148.09	222.5	120.55	258.64	243.09	247.62
Dec-18	266.29	250.55	283.81	208.13	284.5	246.04	229.18	144.51	215.92	120.55	289.65	227.76	246.9

Table 3.0: Cont.....

	Food and Non-Alcoholic Beverages	Alcoholic Beverages, Tobacco and Narcotics	Clothing and Footwear	Housing, Water, Electricity, Gas and Other Fuels	Furniture, Household Equipment and Household Maintenance	Health	Transport	Communication	Recreation and Culture	Education	Restaurant and Hotels	Miscellaneous Goods and Services	All Items
Jan-19	266.00	260.05	311.87	209.80	294.04	253.14	227.03	145.37	224.03	120.97	279.86	244.01	251.27
Feb-19	269.18	264.64	309.94	209.37	309.97	253.94	225.81	160.61	240.73	121.66	280.52	248.62	254.01
Mar-19	276.29	267.26	316.58	212.03	314.69	257.44	226.29	159.17	231.29	122.27	286.81	250.51	258.69
Apr-19	287.67	280.13	321.05	216.88	322.77	252.71	230.26	159.29	236.17	123.45	284.89	259.34	265.27
May-19	271.03	274.68	331.20	211.64	348.38	291.15	235.67	176.63	227.26	134.65	279.30	267.67	265.07
Jun -19	273.74	275.25	338.34	211.26	359.29	303.77	237.49	178.37	222.02	122.47	281.26	265.58	268.42
Jul-19	279.31	281.22	345.66	217.16	362.95	311.80	250.00	165.16	224.49	122.47	294.50	274.17	274.35
Aug-19	286.00	286.45	334.19	217.52	351.19	345.08	244.26	171.13	219.31	122.47	292.64	258.01	279.34
Sept- 19	288.59	281.58	334.92	218.53	356.37	331.87	250.41	155.92	218.37	122.47	328.86	267.89	279.86
Oct- 19	286.36	280.77	333.75	221.95	358.16	333.1	250.5	155.92	217.99	122.47	327.57	268.52	279.49
Nov- 19	280.04	269.2	333.1	226.15	344.01	343.26	249.99	155.92	223.13	206.57	318.96	263.91	280.04
Dec- 19	280.62	279.46	328.60	229.75	347.76	344.33	255.46	155.90	222.51	206.57	318.99	263.45	281.20
Jan- 20	285.84	288.03	337.24	231.49	347.52	342.89	267.38	155.87	223.65	206.57	339.5	270.3	285.45
Feb-20	291.53	275.23	341.22	233.51	335.71	371.28	268.79	163.83	224.43	206.57	336.83	266.44	291.33
Mar-20	303.57	279.46	349.3	229.35	340.8	382.19	265.91	172.83	231.42	206.57	344.58	277.43	298.95
Apr-20	317.98	284.66	354.54	221.18	347.49	384.89	262.71	172.84	233.56	206.57	349.09	280.92	305.28
May-20	316.02	286.87	358.67	223.69	349.37	389.01	263.61	174.33	233.85	206.57	357.22	284.91	306.07
Jun-20	320.11	291.3	364.95	223.57	355.04	369.92	273.12	176.07	235.21	206.57	361.83	289.13	306.97
Jul-20	327.56	291.48	370.96	223.59	358.21	371.11	276.48	174.35	238.89	206.57	362.60	282.20	310.84
Aug-20	336.69	291.16	377.52	223.35	361.94	378.06	275.26	178.66	239.92	206.57	359.63	288.8	316.56
Sept-20	339.82	287.7	379.9	226.13	365.98	377.54	273.04	175.55	240.98	206.57	346.71	289.35	318.22