



**STATISTICS SIERRA LEONE**  
(Stats SL)

*Credible Data for National Development*

# CONSUMER PRICE INDEX MARCH 2020

## PRESS RELEASE

Released: 21<sup>st</sup> April, 2020 @ 12: 00 noon

**Contact Person:**

**Mwaluma Andrew Bryma GEGBE, MA, MSc**

Director of National Accounts and Economic Statistics Division  
Statistics Sierra Leone

Mobile: +23279442430/ +23288000898

Email: [mwaluma.gegbe@statistics.sl](mailto:mwaluma.gegbe@statistics.sl)

Skype: mwaluma.gegbe

**Isata M. ALLIEU-KEIKURA, MSc**

Principal Statistician and Head, Price & Labour Statistics Section  
National Accounts and Economic Statistics Division  
Statistics Sierra Leone

Mobile: +23276580842

Email: [isata.allieu-keikura@statistics.sl](mailto:isata.allieu-keikura@statistics.sl)

**Reviewed by**

**Andrew Bob JOHNNY, MSc**

Deputy Statistician General  
Statistics Sierra Leone

Email: [andrew.johnny@statistics.sl](mailto:andrew.johnny@statistics.sl)

**Approved for release by:**

**Prof. Osman SANKOH, DSc**

Statistician General & CEO  
Statistics Sierra Leone

Email: [osman.sankoh@statistics.sl](mailto:osman.sankoh@statistics.sl)

**21<sup>st</sup> April 2020**

# CONTENTS

Contents.....	i
Key Finding.....	ii
Detailed Explanation on the March, 2020 Consumer Price Index (CPI):.....	1
Figure 1a: Year-on-Year Percentage Changes in the CPI.....	1
Figure 1b: Monthly Percentage Changes in the CPI....	1
Table 1.0: Regional Year-on-Year and Monthly Inflation rates.....	1
Table 1.1: National CPI and Year-on-Year Rates of Inflation by Main COICOP Groups (2008=100).....	2
Table 1.2: 2020 Monthly Food and Non-food baskets inflation rates.....	3
Detailed Results.....	4
Table 2.0: CPI Headline index numbers (2008=100).....	4
Table 2.1: CPI Headline year-on-year rates.....	4
Table 3.0: Year-on-Year and Monthly Inflation Rates.....	5
Table 4.0: National Consumer Price Index by Main COICOP Groups (2008=100).....	6

More information can also be obtained from our website: [www.statistics.sl](http://www.statistics.sl)

**For more detailed information:** Subscribe to the Detailed CPI Report. Please Contact:

The Statistician General, Statistics Sierra Leone, P. O. Box 595, Tower Hill, Freetown, SIERRA LEONE

E-mail: [statistics@statistics.sl](mailto:statistics@statistics.sl) or [info@statistics.sl](mailto:info@statistics.sl)

## KEY FINDINGS

### Headline National Inflation Rates

Annual National Consumer Price inflation (year-on-year) went up by 0.87 percentage point from 14.69 percent in February 2020 to 15.56 percent in March 2020.

The monthly consumer price inflation for March 2020 is 2.62 percent; went up by 0.56 percentage point from 2.06 percent in February, 2020.

### Contributions to headline annual (year-on-year) consumer price inflation

- ✓ Food and non-alcoholic beverages increased from 8.30 percent in February 2020 to 9.87 percent in March 2020. The inflation rate increased by 1.57 percentage points year-on-year.
- ✓ Alcoholic beverages, tobacco and narcotics increased from 4.00 percent in February 2020 to 4.56 percent in March 2020. The inflation rate increased by 0.56 percentage point year-on-year.
- ✓ Clothing and footwear increased from 10.09 percent in February 2020 to 10.34 percent in March 2020. The inflation rate increased by 0.25 percentage point year-on-year.
- ✓ Housing, water, electricity, gas and other fuels declined by 3.36 percentage points from 11.53 percent in February 2020 to 8.17 percent in March 2020.
- ✓ For Furniture, household equipment and household no change is noticed between February, 2020 and March, 2020.
- ✓ Health increased from 46.21 percent in February 2020 to 48.46 percent in March 2020. The inflation rate increased by 2.25 percentage points year-on-year.
- ✓ Transport declined by 1.52 percentage points from 19.03 percent in February 2020 to 17.51 percent in March 2020.
- ✓ Communication increased from 2.00 percent in February 2020 to 8.58 percent in March 2020. The inflation rate increased by 6.58 percentage points year-on-year.
- ✓ Recreation and Culture increased from -6.77 percent in February 2020 to 0.06 percent in March 2020. The inflation rate increased by 6.83 percentage points year-on-year.
- ✓ For Education declined by 0.84 percentage point from 69.79 percent in February 2020 to 68.95 percent in March 2020.
- ✓ Restaurant and hotels increased from 20.07 percent in February 2020 to 20.14 percent in March 2020. The inflation rate increased by 0.07 percentage point year-on-year.
- ✓ Miscellaneous goods and services increased from 7.17 percent in February 2020 to 10.75 percent in March 2020. The inflation rate increased by 3.58 percentage point's year-on-year.

---

More information can also be obtained from our website: [www.statistics.sl](http://www.statistics.sl)

**For more detailed information:** Subscribe to the Detailed CPI Report. Please Contact:  
The Statistician General, Statistics Sierra Leone, P. O. Box 595, Tower Hill, Freetown, SIERRA LEONE  
E-mail: [statistics@statistics.sl](mailto:statistics@statistics.sl) or [info@statistics.sl](mailto:info@statistics.sl)

## Contributions to monthly consumer price inflation

- ✓ Food and non-alcoholic beverages increased from 1.99 percent in February 2020 to 4.13 percent in March 2020. The inflation rate increased by 2.14 percentage points year-on-year.
- ✓ Alcoholic beverages, tobacco and narcotics increased from -4.44 percent in February 2020 to 1.54 percent in March 2020. The inflation rate increased by 5.98 percentage points year-on-year.
- ✓ Clothing and footwear increased from 1.18 percent in February 2020 to 2.37 percent in March 2020. The inflation rate increased by 1.19 percentage points year-on-year.
- ✓ Housing, water, electricity, gas and other fuels declined by 2.65 percentage points from 0.87 percent in February 2020 to -1.78 percent in March 2020.
- ✓ Furniture, household equipment and household maintenance increased from -3.40 percent in February 2020 to 1.52 percent in March 2020. The inflation rate increased by 4.92 percentage points year-on-year.
- ✓ Health declined by 5.34 percentage points from 8.28 percent in February 2020 to 2.94 percent in March 2020.
- ✓ Transport declined by 1.60 percentage points from 0.53 percent in February 2020 to -1.07 percent in March 2020.
- ✓ Communication increased from 5.11 percent in February 2020 to 5.49 percent in March 2020. The inflation rate increased by 0.38 percentage point year-on-year.
- ✓ Recreation and Culture increased from 0.35 percent in February 2020 to 3.11 percent in March 2020. The inflation rate increased by 2.76 percentage points year-on-year.
- ✓ For Education, no change is noticed between February, 2020 and March, 2020.
- ✓ Restaurants and hotels increased from -0.79 percent in February 2020 to 2.30 percent in March 2020. The inflation rate increased by 3.09 percentage points year-on-year.
- ✓ Miscellaneous goods and services increased from -1.43 percent in February 2020 to 4.12 percent in March 2020. The inflation rate increased by 5.55 percentage points year-on-year.

# DETAILED EXPLANATION ON THE MARCH, 2020 CONSUMER PRICE INDEX (CPI)

The national monthly CPI (2008=100) increased from 291.33 in February 2020 to 298.95 in March 2020 resulting to 2.62 percent inflation this month. Similarly, the monthly rates of inflation increased in two regions in March compared with February: Northern from 2.38 percent in February to 5.23 percent in March 2020 and Eastern region from 0.77 percent in February to 2.32 percent in March (comprising Kenema -0.04 and Kono 4.40 percent's in March 2020). However, the other two regions declined: Southern region from 2.36 percent in February to 2.12 percent in March and Western Area from 2.18 percent in February to 1.49 percent in March 2020.

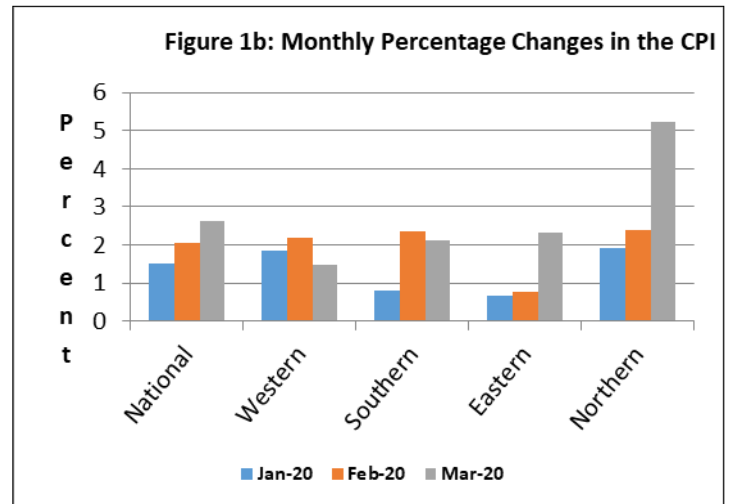
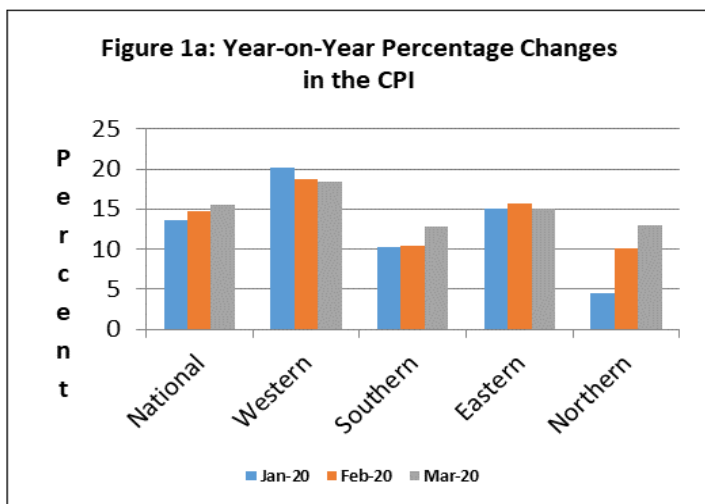
The national year-on-year inflation for March 2020 is 15.56 percent, which indicates an upward trend compared to 14.69 percent in February 2020. Two regions show an upward movement: Northern region from 10.09 percent in February 2020 to 12.92 percent in March 2020 and Southern region from 10.43 percent in February 2020 to 12.74 percent in March 2020. Meanwhile, a decreased is observed in the Western Area which moved from 18.79 percent in February 2020 to 18.42 percent in March 2020 and Eastern region from 15.66 percent in February 2020 to 15.00 percent in March 2020.

**Table 1.0: National and Regional Year-on-Year and Monthly Inflation Rates**

2008=100										
Month	National		Western Area		Eastern Region		Southern Region		Northern Region	
	Year-on-Year	Monthly	Year-on-Year	Monthly	Year-on-Year	Monthly	Year-on-Year	Monthly	Year-on-Year	Monthly
<b>Feb, 2020</b>	14.69	2.06	<b>18.79</b>	2.18	<b>15.66</b>	0.77	10.43	2.36	10.09	2.38
<b>Mar, 2020</b>	15.56	2.62	<b>18.42</b>	1.49	15.00	2.32	12.74	2.12	12.92	5.23

It is observed from the table above that the year-on-year inflation rates for the Western Area, though it declined, is still above the national estimate for the month of March, 2020; while Eastern, Northern and Southern regions are all below.

Figures 1a & 1b below illustrate the movement in the year-on-year inflation and monthly inflation respectively for the National CPI and Regional CPI centers, while Table 1.1 below shows the National CPI of the months of March, 2019 and March, 2020; as well as the 12 months change in the CPI for the main COICOP functions.



## FACTORS INFLUENCING CHANGES IN THE MONTHLY RATE OF INFLATION

The monthly price inflation of 2.62 percent reflects a general change in the price level in all the four regions which affected all of the items in the CPI basket. The following monthly indices increased: food and non-alcoholic beverages 4.13 percent; alcoholic beverages, tobacco and narcotics 1.54 percent; clothing and footwear 2.37; furniture household equipment and household maintenance to 1.52; communication 5.49 percent; recreation and culture 3.11 percent; restaurant and hotel 2.30 percent and miscellaneous goods and services 4.12 percent.

**Table 1.1: National CPI and Year-on-Year Rates of Inflation by Main COICOP Groups (2008=100)**

COICOP	WEIGHT	Mar-19	Dec-19	Jan-20	Feb-20	Mar-20	Monthly Inflation	3 Months Change Inflation	12 months Inflation
		Month Previous Year-	Month m-3 for Current Year	Month m-2 for Current Year	Month m-1 for Current Year	Month m for Current Year			
Food and Non-Alcoholic Beverage	41.86	276.29	280.62	285.84	291.53	303.57	4.13	8.18	9.87
Alcoholic Beverages, Tobacco and Narcotics	1.71	267.26	279.46	288.03	275.23	279.46	1.54	0.00	4.56
Clothing and Footwear	7.34	316.58	328.60	337.24	341.22	349.30	2.37	6.30	10.34
Housing, Water, Electricity, Gas and Other Fuels	13.70	212.03	229.75	231.49	233.51	229.35	-1.78	-0.17	8.17
Furniture, Household Equipment and Household Maintenance	5.86	314.69	347.76	347.52	335.71	340.80	1.52	-2.00	8.30
Health	11.36	257.44	344.33	342.89	371.28	382.19	2.94	11.00	48.46
Transport	7.75	226.29	255.46	267.38	268.79	265.91	-1.07	4.09	17.51
Communication	2.04	159.17	155.90	155.87	163.83	172.83	5.49	10.86	8.58
Recreation and Culture	1.47	231.29	222.51	223.65	224.43	231.42	3.11	4.00	0.06
Education	2.88	122.27	206.57	206.57	206.57	206.57	0.00	0.00	68.95
Restaurant and Hotels	0.92	286.81	318.99	339.50	336.83	344.58	2.30	8.02	20.14
Miscellaneous Goods and Services	3.13	250.51	263.45	270.30	266.44	277.43	4.12	5.31	10.75
All Items	100	258.69	281.20	285.45	291.33	<b>298.95</b>	<b>2.62</b>	6.31	<b>15.56</b>

The National CPI measures the change in prices, on average, from month to month, of the goods and services bought by households, in Freetown, Bo, Kenema, Kono and Makeni and include all expenditure groups. Prices are collected for at least 436 items. All prices collected are the prevailing retail market prices from six (6) markets in Freetown and, three (3) Markets each in Bo, Kenema, Makeni and Kono for weekly prices and other outlets for monthly items whose prices are less likely to fluctuate rapidly. We are using the Modified Laspeyres formula to compute indices according to the Classification of Individual Consumption by Purpose (COICOP) with 12 functions.

More information can also be obtained from our website: [www.statistics.sl](http://www.statistics.sl)

**For more detailed information:** Subscribe to the Detailed CPI Report. Please Contact:  
The Statistician General, Statistics Sierra Leone, P. O. Box 595, Tower Hill, Freetown, SIERRA LEONE  
E-mail: [statistics@statistics.sl](mailto:statistics@statistics.sl) or [info@statistics.sl](mailto:info@statistics.sl)

## Food and Non-Food Components (Year-on-Year)

Food items inflation has been increasing since January and in March it increased by 1.57 percentage points from 8.30 in February 2020 to 9.87 percent in March 2020.

For Non-food items, inflation increased by 0.36 percentage point from 20.08 in February 2020 to 20.44 percent in March 2020. The most upward movers in the non-food basket were recreation and culture with 6.83 percentage points, communications with 6.58 percentage points and miscellaneous with 3.58 percentage points. However, it is also worth noting that health, which has increased twice this year consecutively, increased by 2.25 percentage points.

**Table 1.2: 2020 Monthly Food and Non-food Baskets Inflation Rates**

Items	Jan	Feb	Mar	Apr
Food and Non-alcoholic beverages	7.46	8.30	9.87	
All Non-food items	18.77	20.08	20.44	

## DETAILED RESULTS

**Table 2.0: CPI Headline Index Numbers (2008=100)**

Year	Jan.	Feb.	Mar.	Apr.	May	Jun.	Jul.	Aug.	Sept.	Oct.	Nov.	Dec.
2018	219.73	222.65	225.40	227.58	230.55	234.13	238.79	241.99	243.02	241.26	247.62	246.90
2019	251.27	254.01	258.69	265.27	265.07	268.42	274.35	279.34	279.86	279.49	280.04	281.20
2020	285.45	291.33	298.95									

**Table 2.1: CPI Headline Year-on-Year Rates**

Year	Jan.	Feb.	Mar.	Apr.	May	Jun.	Jul.	Aug.	Sept.	Oct.	Nov.	Dec.
2018	14.69	14.4	14.91	15.14	16.02	16.57	17.71	18.19	17.77	16.06	16.55	14.25
2019	14.35	14.08	14.77	16.56	14.97	14.65	14.89	15.43	15.16	15.85	13.09	13.89
2020	13.60	14.69	15.56									



**Table 3.0: Year-on-Year and Monthly Inflation Rates**

	National CPI(2008=100)			Western Area/Freetown CPI (2008=100)		
	CPI	Year-on-Year % Change	Monthly Change	CPI	Year-on-Year % Change	Monthly Change
<b>2016</b>						
January	161.46	8.41	1.17	166.52	7.42	1.08
February	162.44	8.68	0.61	167.65	7.73	0.68
March	163.16	7.85	0.44	168.41	7.14	0.45
April	164.99	8.68	1.12	170.35	8.12	1.15
May	167.12	8.94	1.29	173.17	9.75	1.66
June	168.58	9.46	0.87	174.81	10.54	0.95
July	171.11	10.87	1.50	175.72	11.00	0.52
August	173.5	10.52	1.40	178.84	10.74	1.78
September	175.13	11.31	0.94	179.90	11.15	0.59
October	177.89	12.56	1.58	183.08	12.3	1.76
November	182.74	15.26	2.73	186.64	14.2	1.95
December	187.39	17.41	2.54	192.60	16.91	3.19
<b>Average</b>	<b>171.29</b>	<b>10.83</b>	<b>1.35</b>	<b>176.47</b>	<b>10.58</b>	<b>1.31</b>
<b>2017</b>						
January	191.59	18.66	2.24	197.56	18.64	2.58
February	194.63	19.82	1.59	200.70	19.72	1.59
March	196.15	20.22	0.78	202.36	20.16	0.83
April	197.66	19.80	0.77	204.09	19.81	0.85
May	198.72	18.91	0.54	204.49	18.09	0.20
June	200.85	19.14	1.07	206.40	18.07	0.93
July	202.87	18.56	1.01	207.94	18.33	0.75
August	204.75	18.01	0.93	209.55	17.17	0.77
September	206.35	17.83	0.78	211.50	17.56	0.93
October	207.88	16.86	0.74	212.93	16.30	0.67
November	212.46	16.26	2.20	217.34	16.45	2.07
December	216.11	15.33	1.72	220.98	14.74	1.67
<b>Average</b>	<b>202.50</b>	<b>18.28</b>	<b>1.20</b>	<b>207.99</b>	<b>17.92</b>	<b>1.15</b>
<b>2018</b>						
January	219.73	14.69	1.68	223.74	13.25	1.25
February	222.65	14.40	1.33	226.02	12.62	1.02
March	225.40	14.91	1.24	228.17	12.76	0.95
April	227.58	15.14	0.97	229.58	12.49	0.62
May	230.55	16.02	1.31	232.64	13.77	1.34
June	234.13	16.57	1.55	235.92	14.31	1.41
July	238.79	17.71	1.99	241.88	16.32	2.52
August	242.00	18.19	1.34	246.79	17.77	2.03
September	243.00	17.77	0.43	245.62	16.13	-0.47
October	241.30	16.06	-0.72	242.86	14.06	-1.12
November	247.60	16.55	2.64	250.50	15.25	3.14
December	246.90	14.25	-0.29	247.61	12.05	-1.15
<b>Average</b>	<b>234.97</b>	<b>16.02</b>	<b>1.12</b>	<b>237.61</b>	<b>14.23</b>	<b>0.96</b>
<b>2019</b>						
January	251.27	14.35	1.77	249.40	11.47	0.72
February	254.01	14.08	1.09	257.62	13.98	3.30
March	258.69	14.77	1.84	262.29	14.95	1.81
April	265.27	16.56	2.54	267.74	16.62	2.08
May	265.07	14.97	-0.08	266.18	14.41	-0.58
June	268.42	14.65	1.26	269.19	14.10	1.13
July	274.35	14.89	2.21	271.38	12.20	0.81
August	279.34	15.43	1.82	279.90	13.41	3.14
September	279.86	15.16	0.19	276.56	12.59	-1.19
October	279.49	15.85	-0.13	281.63	15.96	1.83
November	280.04	13.09	0.20	289.71	15.66	2.87
December	281.20	13.89	0.41	294.07	18.76	1.50
<b>Average</b>	<b>269.75</b>	<b>14.81</b>	<b>1.09</b>	<b>272.14</b>	<b>14.51</b>	<b>1.45</b>
<b>2020</b>						
<b>January</b>	285.45	13.60	1.51	299.50	20.09	1.84
<b>February</b>	291.33	14.69	2.06	306.04	18.79	2.18
<b>March</b>	298.95	15.56	2.62	310.61	18.42	1.49

More information can also be obtained from our website: [www.statistics.sl](http://www.statistics.sl)

**For more detailed information:** Subscribe to the Detailed CPI Report. Please Contact:  
The Statistician General, Statistics Sierra Leone, P. O. Box 595, Tower Hill, Freetown, SIERRA LEONE  
E-mail: [statistics@statistics.sl](mailto:statistics@statistics.sl) or [info@statistics.sl](mailto:info@statistics.sl)

**Table 4.0: National Consumer Price Index by Main COICOP Groups (2008=100)**

	Food and Non-Alcoholic Beverages	Alcoholic Beverages, Tobacco and Narcotics	Clothing and Footwear	Housing, Water, Electricity, Gas and Other Fuels	Furniture, Household Equipment and Household Maintenance	Health	Transport	Communication	Recreation and Culture	Education	Restaurant and Hotels	Miscellaneous Goods and Services	All Items
Weight	41.86	1.71	7.34	13.7	5.86	11.36	7.75	2.04	1.47	2.88	0.92	3.13	100
Jan-16	170.36	152.47	169.99	145.74	177.58	163.18	144.44	130.14	154.92	126.34	153.31	152.88	161.46
Feb-16	171.54	152.62	171.01	146.41	178.05	164.29	144.51	130.39	156.42	126.97	157.65	153.68	162.44
Mar-16	172.4	153.87	171.48	146.79	178.88	164.84	144.91	130.4	162.12	127.06	158.59	154.42	163.16
Apr-16	175.07	154.98	173.33	147.2	179.71	167.24	145.24	130.53	163.02	127.91	159.73	155.48	164.99
May-16	177.33	157.43	177.21	147.75	182.84	169.79	149.09	130.56	164.25	128.18	159.44	157.01	167.12
Jun-16	179.4	159.59	179.49	149.56	184.78	168.89	149.79	132.34	165.5	128.4	160.07	157.72	168.58
Jul-16	182.88	160.87	183.52	150.46	187.58	171.16	149.65	133.7	167.86	129.21	161.13	159.48	171.11
Aug-16	186.78	162.19	185.77	151.09	192.19	172.42	150.21	133.81	169.31	129.38	161.47	159.52	173.5
Sep-16	187.72	164.38	187.75	152.38	193.4	177.12	150.71	134.75	170.37	133.23	162.07	160	175.13
Oct-16	190.45	166.36	190.81	152.59	196.42	181.38	151.95	135.41	174.46	135.65	163.86	169.43	177.89
Nov-16	194.83	171.07	198.03	160.05	202.6	181.71	162.58	140.13	174.81	136.54	170.53	176.28	182.74
Dec-16	200.23	175.3	205.36	164.61	209.1	182.92	165.11	145.55	176.87	136.64	175.86	183.31	187.39
Jan-17	204.76	181.11	216.4	165.98	215.6	183.42	173.05	148.89	180.22	136.84	182.64	187.32	191.59
Feb-17	208.42	186.2	221.43	167.42	221.35	185.87	173.85	150.43	180.65	136.91	182.74	190.46	194.63
Mar-17	210.81	190.78	221.69	167.97	222.42	186.13	176.25	150.52	181.21	137.08	184.93	191.65	196.15
Apr-17	211.73	192.07	224.05	168.43	226.5	188.8	180.03	153.23	181.88	137.21	186.93	193.3	197.66
May-17	212.33	193.55	227.95	168.96	226.53	189.34	183.8	154.16	182.71	137.22	189.74	195.38	198.72
Jun-17	214.56	195.64	233.71	169.47	230.04	191.33	184.16	156.1	185.35	137.51	190.92	197.51	200.85
Jul-17	217.85	197.43	234.78	169.8	231.65	193	184.7	156.96	185.8	137.65	192.15	199.62	202.87
Aug-17	220.49	202.41	235.42	170.01	234.36	194.21	185.1	157.52	186.46	138.55	195.97	203.91	204.75
Sept-17	221.96	204.02	237.81	170.27	237.6	196.62	186.54	160.62	187.72	138.85	199.6	205.61	206.35
Oct-17	223.88	206.03	239.05	170.71	240.1	197.87	187.36	161.93	190.35	139.17	203.05	207.79	207.88
Nov-17	231.59	209.96	242.24	172.65	242.46	199.36	187.63	163.72	193.65	141.25	205.38	212.08	212.46
Dec-17	236.14	215.57	248.21	174.79	246.89	201.37	188.95	164.78	196.29	143.49	211.1	214.87	216.11
Jan-18	240.61	218.27	251.93	176.68	249.13	205.92	190.98	165.94	198.83	147.19	214.47	217.67	219.73
Feb-18	243.6	222.52	254.76	178.69	254.02	209.47	191.54	170.77	201.11	148.5	220.16	220.6	222.65
Mar-18	246.07	226.68	257.38	180.06	260.28	213.6	192.93	171.25	205.24	150.83	225.93	224.25	225.4
Apr-18	248.17	229.31	258.64	181.16	262.12	217.72	193.83	172.23	207.54	152.61	230.49	228.49	227.58
May-18	252.09	232.24	262.07	183.59	263.81	219.84	195.17	172.8	209.48	153.13	234.05	231.32	230.55
Jun-18	256.72	236.77	265.64	185.6	268.26	223.15	196.28	173.87	211.05	154.68	238.77	234.5	234.13
Jul-18	259.39	240.41	267.99	197.69	274.18	226.57	211.78	175.02	212.51	155.74	244.95	235.47	238.79
Aug-18	264.13	243.64	274.6	202.29	289.45	224.45	215.98	144.21	212.73	157.46	254.01	231.41	241.99
Sep-18	266.47	249.53	275.38	203.96	283.93	226.97	219.94	146.47	219.42	119.82	251.8	240.5	243.02
Oct-18	262.55	241.85	278.15	201.81	285.75	228.72	220.56	147.15	217.34	119.82	270.9	232.25	241.26
Nov-18	270.26	256.4	286.95	207.29	290.83	232.6	223.78	148.09	222.5	120.55	258.64	243.09	247.62
Dec-18	266.29	250.55	283.81	208.13	284.5	246.04	229.18	144.51	215.92	120.55	289.65	227.76	246.9

More information can also be obtained from our website: [www.statistics.sl](http://www.statistics.sl)

**For more detailed information:** Subscribe to the Detailed CPI Report. Please Contact:  
The Statistician General, Statistics Sierra Leone, P. O. Box 595, Tower Hill, Freetown, SIERRA LEONE  
E-mail: [statistics@statistics.sl](mailto:statistics@statistics.sl) or [info@statistics.sl](mailto:info@statistics.sl)

**Table 4.0: (cont'd)**

	Food and Non-Alcoholic Beverages	Alcoholic Beverages, Tobacco and Narcotics	Clothing and Footwear	Housing, Water, Electricity, Gas and Other Fuels	Furniture, Household Equipment and Household Maintenance	Health	Transport	Communication	Recreation and Culture	Education	Restaurant and Hotels	Miscellaneous Goods and Services	All Items
<b>Jan-19</b>	<b>266.00</b>	<b>260.05</b>	<b>311.87</b>	<b>209.80</b>	<b>294.04</b>	<b>253.14</b>	<b>227.03</b>	<b>145.37</b>	<b>224.03</b>	<b>120.97</b>	<b>279.86</b>	<b>244.01</b>	<b>251.27</b>
Feb-19	269.18	264.64	309.94	209.37	309.97	253.94	225.81	160.61	240.73	121.66	280.52	248.62	254.01
Mar-19	276.29	267.26	316.58	212.03	314.69	257.44	226.29	159.17	231.29	122.27	286.81	250.51	258.69
Apr-19	287.67	280.13	321.05	216.88	322.77	252.71	230.26	159.29	236.17	123.45	284.89	259.34	265.27
May-19	271.03	274.68	331.20	211.64	348.38	291.15	235.67	176.63	227.26	134.65	279.30	267.67	265.07
Jun -19	273.74	275.25	338.34	211.26	359.29	303.77	237.49	178.37	222.02	122.47	281.26	265.58	268.42
Jul-19	279.31	281.22	345.66	217.16	362.95	311.80	250.00	165.16	224.49	122.47	294.50	274.17	274.35
Aug-19	286.00	286.45	334.19	217.52	351.19	345.08	244.26	171.13	219.31	122.47	292.64	258.01	279.34
Sept- 19	288.59	281.58	334.92	218.53	356.37	331.87	250.41	155.92	218.37	122.47	328.86	267.89	279.86
Oct- 19	286.36	280.77	333.75	221.95	358.16	333.1	250.5	155.92	217.99	122.47	327.57	268.52	279.49
Nov- 19	280.04	269.2	333.1	226.15	344.01	343.26	249.99	155.92	223.13	206.57	318.96	263.91	280.04
Dec- 19	280.62	279.46	328.60	229.75	347.76	344.33	255.46	155.90	222.51	206.57	318.99	263.45	281.20
<b>Jan- 20</b>	<b>285.84</b>	<b>288.03</b>	<b>337.24</b>	<b>231.49</b>	<b>347.52</b>	<b>342.89</b>	<b>267.38</b>	<b>155.87</b>	<b>223.65</b>	<b>206.57</b>	<b>339.5</b>	<b>270.3</b>	<b>285.45</b>
Feb-20	291.53	275.23	341.22	233.51	335.71	371.28	268.79	163.83	224.43	206.57	336.83	266.44	291.33
Mar-20	303.57	279.46	349.3	229.35	340.8	382.19	265.91	172.83	231.42	206.57	344.58	277.43	298.95