



STATISTICS SIERRA LEONE
(Stats SL)

Credible Data for National Development

CONSUMER PRICE INDEX NOVEMBER 2019

PRESS RELEASE

Released: 17th December, 2019 @ 12: 00 noon

Contact Person:

Mwaluma Andrew Bryma GEGBE

Director of National Accounts and Economic Statistics Division
Statistics Sierra Leone

Mobile: +23279442430/ +23288000898

Email: mwaluma.gegbe@statistics.sl

Skype: mwaluma.gegbe

Isata M. ALLIEU-KEIKURA

Principal Statistician and Head, Price & Labour Statistics Section
National Accounts and Economic Statistics Division
Statistics Sierra Leone

Mobile: +23276580842

Email: isata.allieu-keikura@statistics.sl

Reviewed by

Andrew Bob JOHNNY

Deputy Statistician General
Statistics Sierra Leone

Email: andrew.johnny@statistics.sl

Approved for release by:

Prof. Osman SANKOH, DSc

Statistician General
Statistics Sierra Leone

Email: osman.sankoh@statistics.sl

17th December 2019

CONTENTS

Contents:	i
Key Finding:	ii
Detailed Explanation on the November, 2019 Consumer Price Index (CPI):	1
Figure 1a: Year-on-Year Percentage Changes in the CPI:	1
Figure 1b: Monthly Percentage Changes in the CPI:	1
Table 1.0: Regional Year-on-Year and Monthly Inflation rates:	1
Table 1.1: National CPI and Year-on-Year Rates of Inflation by Main COICOP Groups (2008=100):	2
Detailed Results:	3
Table 2.0: CPI Headline index numbers (2008=100):	3
Table 2.1: CPI Headline year-on-year rates:	3
Table 3.0: Year-on-Year and Monthly Inflation Rates:	4
Table 4.0: National Consumer Price Index by Main COICOP Groups (2008=100):	5

KEY FINDINGS

Headline National Inflation Rate

Annual National Consumer Price inflation (year-on-year) went down by 2.76 percentage point from 15.85 percent in October 2019 to 13.09 percent in November 2019.

The monthly consumer price inflation for November 2019 is 0.20 percent; up by 0.33 percentage point from -0.13 percent in October, 2019.

Contributions to headline annual (year-on-year) consumer price inflation

- ✓ Food and non-alcoholic beverages declined by 5.45 percentage points from 9.07 percent in October 2019 to 3.62 percent in November 2019
- ✓ Alcoholic beverages, tobacco and narcotics declined by 11.10 percentage points from 16.09 percent in October 2019 to 4.99 percent in November 2019
- ✓ Clothing and footwear declined by 3.91 percentage points from 19.99 percent in October 2019 to 16.08 percent in November 2019
- ✓ Housing, water, electricity, gas and other fuels declined by 0.88 percentage points from 9.98 percent in October 2019 to 9.10 percent in November 2019
- ✓ Furniture, household equipment and household maintenance declined by 7.05 percentage points from 25.34 percent in October 2019 to 18.29 percent in November 2019
- ✓ Health increased from 45.64 percent in October 2019 to 47.58 percent in November 2019. The inflation rate increased by 1.94 percentage points year-on-year.
- ✓ Transport declined by 1.86 percentage point from 13.57 percent in October 2019 to 11.71 percent in November 2019.
- ✓ Communication declined by 0.67 percentage point from 5.96 percent in October 2019 to 5.29 percent in November 2019.
- ✓ Recreation and Culture declined by 0.02 percentage point from 0.30 percent in October 2019 to 0.28 percent in November 2019.
- ✓ Education increased from 2.21 percent in October 2019 to 71.36 percent in November 2019. The inflation rate increased by 69.15 percentage points year-on-year.
- ✓ Restaurant and Hotels increased from 20.92 percent in October 2019 to 23.32 percent in November 2019. The inflation rate increased by 2.40 percentage points year-on-year.
- ✓ Miscellaneous goods and services declined by 7.06 percentage point from 15.62 percent in October 2019 to 8.56 percent in November 2019.

More information can also be obtained from our website: www.statistics.sl

For more detailed information: Subscribe to the Detailed CPI Report. Please Contact:
The Statistician General, Statistics Sierra Leone, P. O. Box 595, Tower Hill, Freetown, SIERRA LEONE
E-mail: statistics@statistics.sl or info@statistics.sl

Contributions to monthly consumer price inflation

- ✓ Food and non-alcoholic beverages declined by 1.44 percentage points from -0.77 percent in October, 2019 to -2.21 percent in November, 2019.
- ✓ Alcoholic beverages, tobacco and narcotics beverages declined by 3.83 percentage points from -0.29 percent in October, 2019 to -4.12 percent in November, 2019.
- ✓ Clothing and footwear increased by 0.16 percentage points from -0.35 percent in October, 2019 to -0.19 percent in November, 2019.
- ✓ Housing, water, electricity, gas and other fuels increased from 1.57 percent in October, 2019 to 1.89 percent in November, 2019. The inflation rate increased by 0.32 percentage points year-on-year.
- ✓ Furniture, household equipment and household maintenance declined by 4.45 percentage points from 0.50 percent in October, 2019 to -3.95 percent in November, 2019.
- ✓ Health increased from 0.37 percent in October, 2019 to 3.05 percent in November, 2019. The inflation rate increased by 2.68 percentage points year-on-year.
- ✓ Transport declined by 0.24 percentage points from 0.04 percent in October, 2019 to -0.20 percent in November, 2019.
- ✓ For Communication, no change is noticed between October, 2019 and November, 2019.
- ✓ Recreation and Culture increased from -0.17 percent in October, 2019 to 2.36 percent in November, 2019. The inflation rate increased by 2.53 percentage points year-on-year.
- ✓ Education largely increased from 0.00 percent in October, 2019 to 68.67 percent in November, 2019. The inflation rate increased by 68.67 percentage points year-on-year.
- ✓ Restaurants and hotels Culture declined by 2.24 percentage points from -0.39 percent in October, 2019 to -2.63 percent in November, 2019.
- ✓ Miscellaneous goods and services declined by 1.96 percentage points from 0.24 percent in October, 2019 to -1.72 percent in November, 2019.

More information can also be obtained from our website: www.statistics.sl

For more detailed information: Subscribe to the Detailed CPI Report. Please Contact:
The Statistician General, Statistics Sierra Leone, P. O. Box 595, Tower Hill, Freetown, SIERRA LEONE
E-mail: statistics@statistics.sl or info@statistics.sl

DETAILED EXPLANATION ON THE NOVEMBER, 2019 CONSUMER PRICE INDEX (CPI)

The national monthly CPI (2008=100) increased from 279.49 in October 2019 to 280.04 in November 2019 resulting to 0.20 percent inflation this month. The monthly rates of inflation for Southern region increased to 0.17 percent in November compared with October and Western Area increased by 2.87 percent. Meanwhile, the Eastern region declined by 2.84 comprising Kenema -2.70 percent and Kono -2.98 percent and Northern region declined by 2.59.

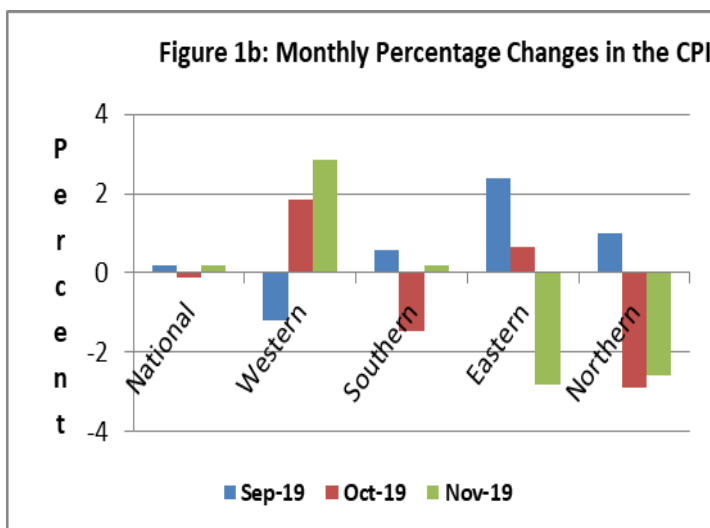
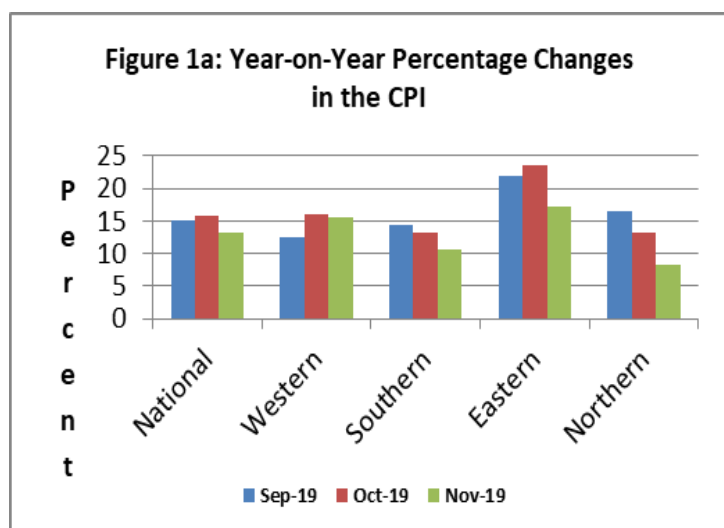
The national year-on-year inflation for November 2019 is 13.09 percent, which indicates a downward trend compared to 15.85 percent in October 2019. All the regions show downward movements, the Eastern region from 23.51 percent in October 2019 to 17.14 percent in November 2019; Western region from 15.96 percent in October 2019 to 15.66 in November 2019; Southern region from 13.29 percent to 10.62 percent in November 2019 and Northern region from 13.24 percent in October 2019 to 8.21 percent in November 2019 respectively.

Table 1.0: National & Regional Year-on-Year and Monthly Inflation rates

2008=100										
Month	National		Western Area		Eastern Region		Southern Region		Northern Region	
	Year-on-year	Monthly	Year-on-year	Monthly	Year-on-year	Monthly	Year-on-year	Monthly	Year-on-year	Monthly
Oct, 2019	15.85	-0.13	15.96	1.83	23.51	0.66	13.29	-1.47	13.24	-2.91
Nov, 2019	13.09	0.20	15.66	2.87	17.14	-2.84	10.62	0.17	8.21	-2.59

It is observed from the table above that the year-on-year inflation rates for the Eastern and Western Area regions are above the national estimate for the month of November, 2019; while Southern and Northern regions are below.

Figures 1a & 1b below illustrate the movement in the year-on-year inflation and monthly inflation respectively for the National CPI and Regional CPI centers, while Table 1.1 below shows the National CPI of the months of August, 2019 to November, 2019; as well as the 12 months change in the CPI for the main COICOP functions.



FACTORS INFLUENCING CHANGES IN THE MONTHLY RATE OF INFLATION

The monthly price inflation of 0.20 percent reflects a general change in the price level in all the four regions which affected all of the items in the CPI basket. The following monthly indices increased: clothing and footwear to 0.19 percent; housing, water, electricity, gas and other fuels to 1.89 percent; health to 3.05 percent; recreation and culture to 2.36 and education to 68.67 percent.

Table 1.1: National CPI and Year-on-Year Rates of Inflation by Main COICOP Groups (2008=100)

		Nov-18	Aug-19	Sept-19	Oct-19	Nov-19			
COICOP	WEIGHT	Month Previous Year-	Month m-3 for Current Year	Month m-2 for Current Year	Month m-1 for Current Year	Month m for Current Year	Monthly Inflation	3 Months Change Inflation	12 months Inflation
Food & Non-Alcoholic Beverages	41.86	270.26	286.00	288.59	286.36	280.04	-2.21	-2.08	3.62
Alcoholic Beverages, Tobacco and Narcotics	1.71	256.40	286.45	281.58	280.77	269.20	-4.12	-6.02	4.99
Clothing and Footwear	7.34	286.95	334.19	334.92	333.75	333.10	-0.19	-0.33	16.08
Housing, Water, Electricity, Gas and Other Fuels	13.70	207.29	217.52	218.53	221.95	226.15	1.89	3.97	9.10
Furniture, Household Equipment and Household Maintenance	5.86	290.83	351.19	356.37	358.16	344.01	-3.95	-2.04	18.29
Health	11.36	232.60	345.08	331.87	333.10	343.26	3.05	-0.53	47.58
Transport	7.75	223.78	244.26	250.41	250.50	249.99	-0.20	2.35	11.71
Communication	2.04	148.09	171.13	155.92	155.92	155.92	0.00	-8.89	5.29
Recreation and Culture	1.47	222.50	219.31	218.37	217.99	223.13	2.36	1.74	0.28
Education	2.88	120.55	122.47	122.47	122.47	206.57	68.67	68.67	71.36
Restaurant and Hotels	0.92	258.64	292.64	328.86	327.57	318.96	-2.63	8.99	23.32
Miscellaneous Goods and Services	3.13	243.09	258.01	267.89	268.52	263.91	-1.72	2.29	8.56
All Items	100	247.62	279.34	279.86	279.49	280.04	0.20	0.25	13.09

The National CPI measures the change in prices, on average, from month to month, of the goods and services bought by households, in Freetown, Bo, Kenema, Kono and Makeni and include all expenditure groups. Prices are collected for at least 400 items. All prices collected are the prevailing retail market prices from six (6) markets in Freetown and, three (3) Markets each in Bo, Kenema, Makeni and Kono for weekly prices and other outlets for monthly items whose prices are less likely to fluctuate rapidly. We are using the Modified Laspeyres formula to compute indices according to the Classification of Individual Consumption by Purpose (COICOP) with 12 functions.

More information can also be obtained from our website: www.statistics.sl

For more detailed information: Subscribe to the Detailed CPI Report. Please Contact:
The Statistician General, Statistics Sierra Leone, P. O. Box 595, Tower Hill, Freetown, SIERRA LEONE
E-mail: statistics@statistics.sl or info@statistics.sl

DETAILED RESULTS

Table 2.0 CPI Headline index numbers (2008=100)

Year	Jan.	Feb.	Mar.	Apr.	May	Jun.	Jul.	Aug.	Sept.	Oct.	Nov.	Dec.
2017	191.59	194.63	196.15	197.66	198.72	200.85	202.87	204.75	206.35	207.88	212.46	216.11
2018	219.73	222.65	225.40	227.58	230.55	234.13	238.79	241.99	243.02	241.26	247.62	246.90
2019	251.27	254.01	258.69	265.27	265.07	268.42	274.35	279.34	279.86	279.49	280.04	

Table 2.1 CPI Headline year-on-year rates

Year	Jan.	Feb.	Mar.	Apr.	May	Jun.	Jul.	Aug.	Sept.	Oct.	Nov.	Dec.
2017	18.66	19.82	20.22	19.8	18.91	19.14	18.56	18.01	17.83	16.86	16.26	15.33
2018	14.69	14.4	14.91	15.14	16.02	16.57	17.71	18.19	17.77	16.06	16.55	14.25
2019	14.35	14.08	14.77	16.56	14.97	14.65	14.89	15.43	15.16	15.85	13.09	

Table 3.0: Year-on-Year and Monthly Inflation Rates

	National CPI (2008=100)			Western Area/Freetown CPI (2008=100)		
	CPI	Year-on-Year % Change	Monthly Change	CPI	Year-on-Year % Change	Monthly Change
2016						
January	161.46	8.41	1.17	166.52	7.42	1.08
February	162.44	8.68	0.61	167.65	7.73	0.68
March	163.16	7.85	0.44	168.41	7.14	0.45
April	164.99	8.68	1.12	170.35	8.12	1.15
May	167.12	8.94	1.29	173.17	9.75	1.66
June	168.58	9.46	0.87	174.81	10.54	0.95
July	171.11	10.87	1.50	175.72	11.00	0.52
August	173.5	10.52	1.40	178.84	10.74	1.78
September	175.13	11.31	0.94	179.90	11.15	0.59
October	177.89	12.56	1.58	183.08	12.3	1.76
November	182.74	15.26	2.73	186.64	14.2	1.95
December	187.39	17.41	2.54	192.60	16.91	3.19
Average	171.29	10.83	1.35	176.47	10.58	1.31
2017						
January	191.59	18.66	2.24	197.56	18.64	2.58
February	194.63	19.82	1.59	200.70	19.72	1.59
March	196.15	20.22	0.78	202.36	20.16	0.83
April	197.66	19.80	0.77	204.09	19.81	0.85
May	198.72	18.91	0.54	204.49	18.09	0.20
June	200.85	19.14	1.07	206.40	18.07	0.93
July	202.87	18.56	1.01	207.94	18.33	0.75
August	204.75	18.01	0.93	209.55	17.17	0.77
September	206.35	17.83	0.78	211.50	17.56	0.93
October	207.88	16.86	0.74	212.93	16.30	0.67
November	212.46	16.26	2.20	217.34	16.45	2.07
December	216.11	15.33	1.72	220.98	14.74	1.67
Average	202.50	18.28	1.20	207.99	17.92	1.15
2018						
January	219.73	14.69	1.68	223.74	13.25	1.25
February	222.65	14.40	1.33	226.02	12.62	1.02
March	225.40	14.91	1.24	228.17	12.76	0.95
April	227.58	15.14	0.97	229.58	12.49	0.62
May	230.55	16.02	1.31	232.64	13.77	1.34
June	234.13	16.57	1.55	235.92	14.31	1.41
July	238.79	17.71	1.99	241.88	16.32	2.52
August	242.00	18.19	1.34	246.79	17.77	2.03
September	243.00	17.77	0.43	245.62	16.13	-0.47
October	241.30	16.06	-0.72	242.86	14.06	-1.12
November	247.60	16.55	2.64	250.50	15.25	3.14
December	246.90	14.25	-0.29	247.61	12.05	-1.15
Average	234.97	16.02	1.12	237.61	14.23	0.96
2019						
January	251.27	14.35	1.77	249.40	11.47	0.72
February	254.01	14.08	1.09	257.62	13.98	3.30
March	258.69	14.77	1.84	262.29	14.95	1.81
April	265.27	16.56	2.54	267.74	16.62	2.08
May	265.07	14.97	-0.08	266.18	14.41	-0.58
June	268.42	14.65	1.26	269.19	14.10	1.13
July	274.35	14.89	2.21	271.38	12.20	0.81
August	279.34	15.43	1.82	279.90	13.41	3.14
September	279.86	15.16	0.19	276.56	12.59	-1.19
October	279.49	15.85	-0.13	281.63	15.96	1.83
November	280.04	13.09	0.20	289.71	15.66	2.87

More information can also be obtained from our website: www.statistics.sl

For more detailed information: Subscribe to the Detailed CPI Report. Please Contact:
The Statistician General, Statistics Sierra Leone, P. O. Box 595, Tower Hill, Freetown, SIERRA LEONE
E-mail: statistics@statistics.sl or info@statistics.sl

Table 4.0: National Consumer Price Index by Main COICOP Groups (2008=100)

	Food and Non-Alcoholic Beverages	Alcoholic Beverages, Tobacco and Narcotics	Clothing and Footwear	Housing, Water, Electricity, Gas and Other Fuels	Furniture, Household Equipment and Household Maintenance	Health	Transport	Communication	Recreation and Culture	Education	Restaurant and Hotels	Miscellaneous Goods and Services	All Items
Weight	41.86	1.71	7.34	13.7	5.86	11.36	7.75	2.04	1.47	2.88	0.92	3.13	100
Jan-16	170.36	152.47	169.99	145.74	177.58	163.18	144.44	130.14	154.92	126.34	153.31	152.88	161.46
Feb-16	171.54	152.62	171.01	146.41	178.05	164.29	144.51	130.39	156.42	126.97	157.65	153.68	162.44
Mar-16	172.4	153.87	171.48	146.79	178.88	164.84	144.91	130.4	162.12	127.06	158.59	154.42	163.16
Apr-16	175.07	154.98	173.33	147.2	179.71	167.24	145.24	130.53	163.02	127.91	159.73	155.48	164.99
May-16	177.33	157.43	177.21	147.75	182.84	169.79	149.09	130.56	164.25	128.18	159.44	157.01	167.12
Jun-16	179.4	159.59	179.49	149.56	184.78	168.89	149.79	132.34	165.5	128.4	160.07	157.72	168.58
Jul-16	182.88	160.87	183.52	150.46	187.58	171.16	149.65	133.7	167.86	129.21	161.13	159.48	171.11
Aug-16	186.78	162.19	185.77	151.09	192.19	172.42	150.21	133.81	169.31	129.38	161.47	159.52	173.5
Sep-16	187.72	164.38	187.75	152.38	193.4	177.12	150.71	134.75	170.37	133.23	162.07	160	175.13
Oct-16	190.45	166.36	190.81	152.59	196.42	181.38	151.95	135.41	174.46	135.65	163.86	169.43	177.89
Nov-16	194.83	171.07	198.03	160.05	202.6	181.71	162.58	140.13	174.81	136.54	170.53	176.28	182.74
Dec-16	200.23	175.3	205.36	164.61	209.1	182.92	165.11	145.55	176.87	136.64	175.86	183.31	187.39
Jan-17	204.76	181.11	216.4	165.98	215.6	183.42	173.05	148.89	180.22	136.84	182.64	187.32	191.59
Feb-17	208.42	186.2	221.43	167.42	221.35	185.87	173.85	150.43	180.65	136.91	182.74	190.46	194.63
Mar-17	210.81	190.78	221.69	167.97	222.42	186.13	176.25	150.52	181.21	137.08	184.93	191.65	196.15
Apr-17	211.73	192.07	224.05	168.43	226.5	188.8	180.03	153.23	181.88	137.21	186.93	193.3	197.66
May-17	212.33	193.55	227.95	168.96	226.53	189.34	183.8	154.16	182.71	137.22	189.74	195.38	198.72
Jun-17	214.56	195.64	233.71	169.47	230.04	191.33	184.16	156.1	185.35	137.51	190.92	197.51	200.85
Jul-17	217.85	197.43	234.78	169.8	231.65	193	184.7	156.96	185.8	137.65	192.15	199.62	202.87
Aug-17	220.49	202.41	235.42	170.01	234.36	194.21	185.1	157.52	186.46	138.55	195.97	203.91	204.75
Sept-17	221.96	204.02	237.81	170.27	237.6	196.62	186.54	160.62	187.72	138.85	199.6	205.61	206.35
Oct-17	223.88	206.03	239.05	170.71	240.1	197.87	187.36	161.93	190.35	139.17	203.05	207.79	207.88
Nov-17	231.59	209.96	242.24	172.65	242.46	199.36	187.63	163.72	193.65	141.25	205.38	212.08	212.46
Dec-17	236.14	215.57	248.21	174.79	246.89	201.37	188.95	164.78	196.29	143.49	211.1	214.87	216.11
Jan-18	240.61	218.27	251.93	176.68	249.13	205.92	190.98	165.94	198.83	147.19	214.47	217.67	219.73
Feb-18	243.6	222.52	254.76	178.69	254.02	209.47	191.54	170.77	201.11	148.5	220.16	220.6	222.65
Mar-18	246.07	226.68	257.38	180.06	260.28	213.6	192.93	171.25	205.24	150.83	225.93	224.25	225.4
Apr-18	248.17	229.31	258.64	181.16	262.12	217.72	193.83	172.23	207.54	152.61	230.49	228.49	227.58
May-18	252.09	232.24	262.07	183.59	263.81	219.84	195.17	172.8	209.48	153.13	234.05	231.32	230.55
Jun-18	256.72	236.77	265.64	185.6	268.26	223.15	196.28	173.87	211.05	154.68	238.77	234.5	234.13
Jul-18	259.39	240.41	267.99	197.69	274.18	226.57	211.78	175.02	212.51	155.74	244.95	235.47	238.79
Aug-18	264.13	243.64	274.6	202.29	289.45	224.45	215.98	144.21	212.73	157.46	254.01	231.41	241.99
Sep-18	266.47	249.53	275.38	203.96	283.93	226.97	219.94	146.47	219.42	119.82	251.8	240.5	243.02
Oct-18	262.55	241.85	278.15	201.81	285.75	228.72	220.56	147.15	217.34	119.82	270.9	232.25	241.26
Nov-18	270.26	256.4	286.95	207.29	290.83	232.6	223.78	148.09	222.5	120.55	258.64	243.09	247.62
Dec-18	266.29	250.55	283.81	208.13	284.5	246.04	229.18	144.51	215.92	120.55	289.65	227.76	246.9
Jan-19	266.00	260.05	311.87	209.80	294.04	253.14	227.03	145.37	224.03	120.97	279.86	244.01	251.27
Feb-19	269.18	264.64	309.94	209.37	309.97	253.94	225.81	160.61	240.73	121.66	280.52	248.62	254.01
Mar-19	276.29	267.26	316.58	212.03	314.69	257.44	226.29	159.17	231.29	122.27	286.81	250.51	258.69
Apr-19	287.67	280.13	321.05	216.88	322.77	252.71	230.26	159.29	236.17	123.45	284.89	259.34	265.27
May-19	271.03	274.68	331.20	211.64	348.38	291.15	235.67	176.63	227.26	134.65	279.30	267.67	265.07
Jun-19	273.74	275.25	338.34	211.26	359.29	303.77	237.49	178.37	222.02	122.47	281.26	265.58	268.42
Jul-19	279.31	281.22	345.66	217.16	362.95	311.80	250.00	165.16	224.49	122.47	294.50	274.17	274.35
Aug-19	286.00	286.45	334.19	217.52	351.19	345.08	244.26	171.13	219.31	122.47	292.64	258.01	279.34
Sept-19	288.59	281.58	334.92	218.53	356.37	331.87	250.41	155.92	218.37	122.47	328.86	267.89	279.86
Oct-19	286.36	280.77	333.75	221.95	358.16	333.1	250.5	155.92	217.99	122.47	327.57	268.52	279.49
Nov-19	280.04	269.2	333.1	226.15	344.01	343.26	249.99	155.92	223.13	206.57	318.96	263.91	280.04

More information can also be obtained from our website: www.statistics.sl

For more detailed information: Subscribe to the Detailed CPI Report. Please Contact:
The Statistician General, Statistics Sierra Leone, P. O. Box 595, Tower Hill, Freetown, SIERRA LEONE
E-mail: statistics@statistics.sl or info@statistics.sl