



CONSUMER PRICE INDEX (CPI) May, 2015: PRESS RELEASE

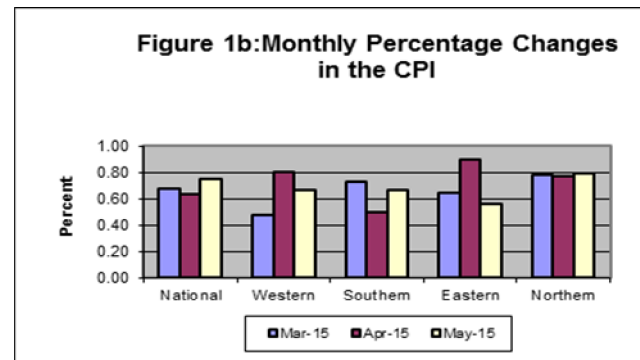
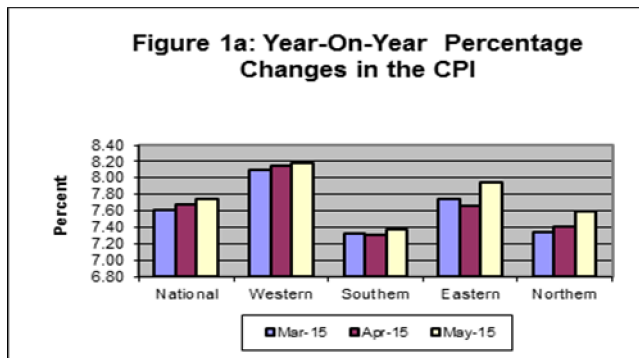
Released on Monday June 22, 2015 at 1:00 pm

MAY 2015 MONTHLY INFLATION RATE INCREASES SLIGHTLY

The national monthly CPI (2007=100) increased from 243.43 per cent in April, 2015 to 245.25 per cent in May, 2015 resulting in a 0.75 per cent increase in inflation rate this month. Similarly, the monthly rates of inflation increased in all the regions. Western Area (0.66per cent), Northern Region (0.79 per cent), Southern region(0.66 per cent) and the Eastern Region(0.56 per cent) comprising two centers, Kenema(0.68 per cent) and Kono (1.20 per cent) during the same period. Also, the national annual inflation rate for May, 2015 increased slightly from 7.67 per cent in April , 2015 to 7.75 per cent in May, 2015. Again, the year-on-year rates of inflation increased in all the regions. In Northern region the year-on-year rate of inflation increased slightly from 7.41 per cent to 7.60 per cent, in Western region from 8.15 per cent to 8.18 per cent, in Southern region from 7.31 per cent to 7.37 per cent and in Eastern region from 7.66 per cent to 7.94 per cent.

Figures 1a &1b below illustrate the movement in the year-on-year rates of inflation and monthly rates of inflation respectively for the National CPI and other CPI centers while table 1 below shows the National CPI from the months of May, 2014 to May, 2015 and the 12 month change in the CPI for the main index groups.

Considering the old CPI series (1992=100), the year-on-year rates of inflation increased slightly in Freetown from 8.51 per cent in April, 2015 to 8.54 per cent in May, 2015 while the year-on-year rates of inflation decreased in Makeni from 9.0 per cent to 8.48 per cent, in Kenema from 8.76 per cent to 8.14 per cent and in Bo from 8.98 per cent to 8.20 per cent during the same period.



FACTORS INFLUENCING CHANGES IN THE MONTHLY RATE OF INFLATION

The national monthly CPI (2007=100) increased from 243.43 per cent in April, 2015 to 245.25 per cent in May, 2015 resulting in a 0.75 per cent increase in inflation rate this month. However, this reflects a monthly increase that is greater than the previous month, meaning that prices are increasing at a slightly higher rate especially the food and non-alcoholic beverages, restaurant and hotels and alcoholic beverages, tobacco and narcotics prices as a result of an increase in the number of guests in the hotels across the country due to a drop in the number of Ebola cases across the country being reported officially for the past two to three months. There was a general increase in the price level in all the four regions which affected most of the components in the CPI basket.

At the national level, there were increases in the indices for the following groups; food and non-alcoholic beverages (0.71 per cent), housing, water, electricity, gas & other fuels(1.0 per cent), clothing and footwear (0.82 per cent), furnishing, household equipment and household maintenance(1.06 per cent), health(0.24 per cent), restaurant and hotels(2.30 per cent), transport (1.04 per cent) and communication (0.58 per cent).

The food products for which indices increased this month include bread cereals(1.07 per cent), meat(0.56 per cent), fish and seafood(0.70 per cent), milk, cheese and eggs(1.26 per cent), oils and fats(0.03 per cent), vegetables(0.85 per cent) and fruits(0.80 per cent). The increase in food indices in all the centers was as a result of drastic cut down on the food supplies to quarantined households nationwide due to a significant drop in the number of Ebola cases being recently reported officially.

More information can also be obtained from our website: www.statistics.sl

For More Detailed Information: Subscribe to the Detailed CPI Report. Please Contact: The Statistician General, Statistics Sierra Leone P. O. Box 595, Tower Hill, Freetown, SIERRA LEONE Telephone: (232) 22- 223287 Call: (232) 76 – 609989 Facsimile: (232) 22- 223897 E-Mail: statistics@statistics.sl/info@statistics.sl

National CPI and Year-on- Year Rates of Inflation by Main COICOP Groups (2007=100)

		May-14	Feb-15	Mar-15	Apr-15	May-15			
COICOP	WEIGHT	Month Previous Year -	Month m-3 for Current Year,	Month m-2 for Current Year	Month m-1 for Current Year	Month m for Current Year	Monthly Change	3 Months Change	12 months Change
O	a	b	c	d	e	f	g	h	i
Food and Non-Alcoholic Beverage	41.86	253.19	265.80	267.57	269.50	271.40	0.71	2.11	7.19
Alcoholic Beverage, Tobacco and Narcotics	1.71	279.85	292.46	295.65	299.30	302.43	1.05	3.41	8.07
Clothing and Footwear	7.34	244.26	251.99	254.34	257.64	259.74	0.82	3.08	6.34
Housing, Water, Electricity, Gas and other Fuels	13.70	213.42	234.93	236.99	240.40	242.81	1.00	3.35	13.77
Furnishing, Household Equipment and Household Maintenance	5.86	255.24	266.35	272.83	276.82	279.76	1.06	5.04	9.61
Health	11.36	214.49	223.46	224.68	227.33	227.87	0.24	1.98	6.24
Transport	7.75	178.65	182.35	179.50	181.04	182.92	1.04	0.31	2.39
Communication	2.04	115.04	120.74	121.76	122.80	123.51	0.58	2.30	7.36
Recreation and Culture	1.47	169.78	176.00	177.08	178.24	179.16	0.52	1.80	5.52
Education	2.88	137.23	138.93	139.42	140.05	140.48	0.30	1.11	2.36
Restaurant and Hotels	0.92	164.40	187.35	191.09	196.49	201.00	2.30	7.29	22.27
Miscellaneous G&S	3.13	199.16	207.29	209.73	212.31	213.27	0.45	2.89	7.08
All Items	100.00	227.62	239.05	240.27	243.43	245.25	0.75	2.60	7.75
Column description									
Column o : COICOP 12 functions									
Column a : CPI weighting									
Column b : CPI of the given month (m) for previous year									
Column c : CPI of the given month (m -3) for current year									
Column d : CPI of the given month (m -2) for current year									
Column e : CPI of the given month (m -1) for current year									
Column g : CPI monthly change in % ((f-e) x 100 /e)									
Column h : CPI 3 months change in % ((f-c) x 100 /c)									
Column i : CPI 12 months change in % ((f-b) x 100/b)									

The National CPI measures the change in prices, on average, from month to month, of the goods and services bought by most households, in Freetown, Bo, Kenema and Makeni including all expenditure groups and both families and single persons. Prices are collected for 251 items. All prices collected are the prevailing retail market prices from six (6) markets in the Greater Freetown area, three (3) Markets in Bo Town, three (3) markets in Kenema Town and two (2) markets in Makeni Town for weekly prices and other outlets for monthly items whose prices are less likely to fluctuate rapidly. The National Index was computed by aggregating the CPI for the four index towns previously published separately with different base periods. The old CPI series for Bo, Kenema, Makeni and Freetown were rebased to base year 2003, Computation methodology changed from the Modified to the Traditional Laspeyres, and transformed into the Classification of Individual Consumption by Purpose (COICOP) with 12 functions. The separate center CPIs were aggregated at the sub-class level at which level new weights were also introduced to obtain the Interim National Index.

FREETOWN CONSUMER PRICE INDEX (1992=100)-OLD SERIES

	Food	Beverage, & Tobacco	Rent Rates & Repairs	Fuel & Power	Cloth & Foot wear	Furniture Goods	Expan. Goods & services	Personal Transport	Tran sport & Comm.	Med. & Medicare	Education & Stationery	Enter & Recreation	Personal Goods & Services	All Items	Monthly % Change	Annual % Change
Wgts	54.13	3.63	3.92	6.51	7.35	1.86	2.46	1.16	4.77	3.45	4.11	3.72	2.93	100		
Jan-10	700.84	22.01	67.84	69.29	41.98	14.80	35.74	20.45	53.17	37.15	28.32	40.32	28.92	1160.82	3.30	14.16
Feb-10	734.77	22.59	67.85	73.66	43.0	14.95	35.52	21.27	57.50	38.55	28.32	42.09	30.01	1210.07	4.24	17.22
Mar-10	733.45	21.95	67.94	71.44	42.96	14.92	35.16	21.37	56.86	39.35	28.32	42.41	30.03	1206.13	-0.33	17.85
Apr-10	737.23	22.72	68.01	72.18	43.70	15.20	35.53	21.62	57.36	40.99	28.52	42.43	30.37	1215.85	0.81	18.42
May-10	724.65	23.67	68.01	72.65	44.01	15.38	35.92	21.79	57.10	42.87	29.08	42.46	30.52	1208.11	-0.64	17.85
Jun-10	740.95	23.91	67.94	72.98	45.19	16.14	37.59	22.24	58.80	42.40	29.77	44.40	30.91	1233.23	2.08	18.11
Jul-10	748.40	24.15	68.92	73.70	45.26	16.14	36.88	22.13	58.80	41.06	31.01	46.30	30.91	1243.67	0.85	18.21
Aug-10	774.54	24.26	68.92	74.48	46.10	16.19	37.43	22.16	58.80	39.92	31.46	46.59	31.25	1272.10	2.29	18.35
Sept-10	824.46	24.1	68.92	73.05	46.47	16.25	37.93	22.14	58.80	40.84	31.59	46.89	31.88	1323.40	4.03	18.51
Oct-10	822.73	25.08	69.91	73.53	47.16	16.49	37.25	22.29	58.80	41.30	31.59	48.20	32.13	1326.46	0.23	17.63
Nov-10	804.57	25.13	69.92	75.14	47.23	16.64	37.30	23.37	62.93	41.30	31.59	48.22	32.10	1315.45	-0.83	18.37
Dec-10	813.86	25.21	69.99	74.73	47.45	16.93	38.22	23.56	62.93	42.27	33.30	49.00	33.02	1330.46	1.14	18.40
Jan-11	852.82	25.21	69.16	74.98	47.82	16.80	37.79	23.95	62.96	45.34	33.30	51.34	33.85	1375.32	3.37	18.48
Feb-11	895.95	25.53	69.24	76.31	47.93	16.97	37.40	24.60	62.99	45.35	33.30	52.18	33.89	1421.65	3.37	17.48
Mar-11	894.25	24.49	69.34	75.74	48.11	17.17	37.55	25.49	62.99	46.04	33.30	55.04	34.51	1424.02	0.17	18.07
Apr-11	897.06	24.92	69.34	75.88	49.87	18.03	37.55	25.55	62.99	46.04	33.33	55.69	35.85	1432.12	0.57	18.32
May-11	904.62	24.95	69.34	81.13	51.09	18.20	37.36	27.84	74.11	46.09	33.34	55.69	36.01	1459.77	1.93	20.83
Jun-11	913.11	25.39	69.34	84.22	51.67	18.46	37.42	30.51	73.84	46.15	33.65	56.56	36.84	1477.18	1.19	19.78
Jul-11	928.86	25.39	69.34	86.71	53.75	19.28	37.47	31.20	73.84	47.80	33.65	56.56	40.11	1503.96	1.81	20.93
Aug-11	944.79	25.25	69.36	86.33	54.59	19.84	36.87	31.43	74.31	47.86	33.65	55.56	40.79	1520.61	1.11	19.53
Sept-11	969.14	25.31	69.36	86.46	55.75	19.78	36.90	31.49	74.31	48.93	33.65	55.56	41.51	1548.15	1.81	16.98
Oct-11	974.36	24.66	69.36	87.22	57.15	20.00	36.91	31.55	73.46	50.34	30.09	55.56	41.41	1552.08	0.25	17.01
Nov-11	975.93	24.96	69.36	87.89	57.52	20.25	36.07	31.73	74.68	50.93	30.05	53.35	40.44	1553.16	0.07	18.07
Dec-11	973.53	25.16	69.36	87.61	57.89	20.26	37.51	32.30	75.92	51.81	30.05	53.44	40.62	1555.45	0.15	16.91
Jan-12	1015.86	25.95	69.35	86.67	57.32	20.89	37.78	32.30	76.76	53.21	29.63	52.34	40.60	1598.65	2.78	16.24
Feb-12	1054.91	26.83	69.36	90.28	60.45	21.62	37.71	32.31	75.80	53.30	29.67	53.52	40.73	1646.51	2.99	15.82
Mar-12	1058.39	29.02	69.36	87.11	62.93	22.51	38.35	32.47	76.25	53.66	31.86	54.22	40.96	1657.09	0.64	16.37
Apr-12	1055.91	29.34	69.36	87.90	64.10	22.59	38.21	32.47	76.25	54.22	31.86	54.72	40.95	1657.89	0.05	16.42
May-12	1068.97	32.11	69.35	87.94	66.74	23.55	37.94	32.43	76.83	54.22	31.75	54.77	41.09	1676.69	1.13	14.86
Jun-12	1071.37	32.71	69.33	90.94	66.59	23.91	38.06	32.11	76.83	54.25	32.13	55.44	41.29	1684.97	0.49	14.07
Jul-12	1093.83	31.83	69.33	92.92	66.85	23.73	38.12	30.76	76.83	54.25	32.16	55.51	41.60	1707.73	1.35	13.55
Aug-12	1091.41	32.60	69.35	94.63	67.26	24.51	39.39	30.80	76.83	54.25	32.71	55.25	41.91	1710.90	0.19	12.51
Sept-12	1099.38	33.48	69.35	98.55	67.61	24.62	38.85	30.87	77.01	54.25	33.52	55.27	42.02	1724.80	0.81	11.41
Oct-12	1104.56	34.44	69.35	99.56	67.97	24.71	38.95	30.89	77.01	54.56	34.38	55.61	42.03	1734.01	0.53	11.72
Nov-12	1107.91	35.02	69.35	102.64	67.99	24.47	39.02	30.92	77.84	54.56	34.93	55.58	41.97	1732.70	0.47	12.17
Dec-12	1112.04	34.30	69.35	102.64	66.65	24.43	39.02	30.95	77.84	54.56	34.93	55.58	40.46	1742.78	0.03	11.86
Jan-13	1144.85	34.20	69.35	106.92	66.06	24.44	39.03	31.18	78.02	54.56	34.93	55.58	40.46	1779.58	2.11	11.32
Feb-13	1180.29	34.30	69.35	111.72	66.59	24.52	39.13	31.18	78.02	55.21	34.93	55.99	40.32	1821.54	2.36	10.63
Mar-13	1192.37	34.30	69.35	116.32	65.95	24.45	39.29	31.27	78.28	55.21	34.93	55.99	39.82	1837.52	0.88	10.89
Apr-13	1199.88	34.14	70.33	111.67	66.16	23.99	39.54	31.30	79.11	56.25	34.93	55.99	39.67	1842.98	0.30	11.16
May-13	1211.25	34.18	70.33	105.80	67.09	23.23	39.59	31.34	79.11	56.11	34.93	56.06	40.07	1849.08	0.33	10.28
Jun-13	1221.22	34.18	70.30	105.25	67.40	23.20	39.18	31.34	79.11	56.11	35.58	52.89	40.11	1855.88	0.37	10.14
Jul-13	1233.91	34.19	70.31	105.97	67.79	23.03	38.55	31.36	79.11	56.79	36.29	52.89	40.08	1870.28	0.78	9.52
Aug-13	1232.00	34.20	70.31	106.23	67.83	22.61	38.60	32.20	79.11	56.70	37.90	52.96	39.99	1870.65	0.02	9.34
Sept-13	1239.83	33.92	70.30	106.74	67.76	23.54	38.39	32.19	79.11	56.67	40.09	52.96	39.80	1881.30	0.57	9.07
Oct-13	1244.89	34.60	72.26	106.45	67.93	23.69	38.13	32.17	79.11	57.39	40.17	52.96	39.04	1888.80	0.40	8.93
Nov-13	1237.85	34.67	72.26	108.21	67.57	23.76	38.11	32.08	79.07	58.27	40.22	52.96	38.65	1883.69	-0.27	8.71
Dec-13	1244.01	34.68	72.26	109.96	67.51	23.75	38.11	31.91	79.09	58.27	40.30	52.96	38.55	1891.35	0.41	8.53
Jan-14	1273.65	34.52	72.26	111.85	67.45	23.87	38.29	31.78	79.09	58.90	40.43	52.82	38.60	1923.50	1.70	8.09
Feb-14	1317.75	33.77	72.26	113.61	57.15	23.79	38.38	31.63	79.09	59.56	40.45	52.82	38.51	1959.60	1.88	7.58
Mar-14	1331.76	34.70	72.2	115.46	56.49	23.85	38.55	31.68	79.09	59.56	40.45	52.82	38.53	1975.17	0.79	7.49
Apr-14	1350.23	34.48	72.26	107.22	55.80	23.21	38.06	31.64	79.09	57.25	40.45	51.06	37.72	1978.46	0.17	7.35
May-14	1358.09	34.73	72.26	107.61	55.89	23.15	38.24	31.65	79.09	57.28	40.45	51.12	37.73	1987.28	0.45	7.47
June-14	1365.34	34.75	72.28	109.57	56.37	23.41	38.36	31.69	80.75	58.22	40.61	51.27	37.91	2000.54	0.67	7.79
Jul-14	1375.54	34.87	74.45	110.79	56.94	23.50	38.36	31.76	81.81	58.91	40.82	51.34	38.12	2017.21	0.83	7.86
Aug-14	1385.04	35.05	77.51	112.52	57.46	23.65	38.42	31.83	82.06	59.73	41.08	51.34	39.14	2034.84	0.87	8.78
Sept-14	1390.15	37.41	78.52	114.31	58.21	24.01	38.71	31.86	83.30	59.91	41.24	51.04	39.15	2047.82	0.64	8.85
Oct-14	1392.09	37.43	80.52	117.67	58.85	24.16	38.71	31.86	83.39	60.66	41.34	51.04	39.29	2057.01	0.45	8.91
Nov-14	1382.31	37.39	83.63	121.78	59.45	24.37	38.71	31.86	84.31	61.99	43.28	51.05	39.46	2059.59	0.13	9.34
Dec-14	1386.77	37.56	91.98	123.84	60.64	24.67	38.71	31.87	85.18	62.34	43.36	51.05	39.53	2077.52	0.87	9.84

FREETOWN CONSUMER PRICE INDEX (1992=100)-OLD SERIES (cont'd)

	Food	Beverage, & Tobacco	Rent Rates & Repairs	Fuel & Power	Cloth & Foot wear	Furniture Goods	Expan. Goods & services	Personal Transport	Tran sport & Comm.	Med. & Medicare	Education & Stationery	Enter & Recreation	Personal Goods & Services	All Items	Monthly % Change	Annual % Change
Jan-15	1391.94	37.74	92.00	126.93	61.59	24.71	38.74	31.87	85.69	64.22	43.40	51.04	39.81	2089.67	0.58	8.64
Feb-15	1417.09	38.52	92.12	132.24	62.18	24.97	38.84	28.94	85.69	66.13	43.42	51.10	40.29	2121.51	1.52	8.26
Mar-15	1423.11	38.55	92.16	134.33	63.25	25.28	38.18	29.25	90.58	68.83	43.42	51.38	40.54	2138.87	0.82	8.29
Apr-15	1427.28	38.58	94.08	134.84	63.17	25.35	38.42	29.34	91.42	68.99	43.42	51.37	40.56	2146.83	0.37	8.51
May-15	1434.34	38.59	94.08	136.90	63.42	25.41	38.77	29.01	92.00	68.68	43.50	51.37	40.92	2157.00	0.47	8.54