



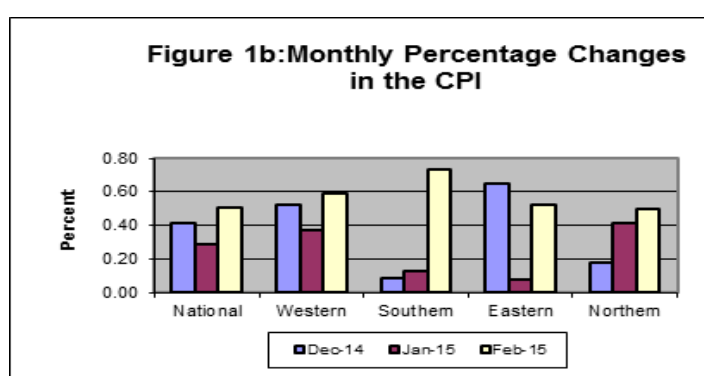
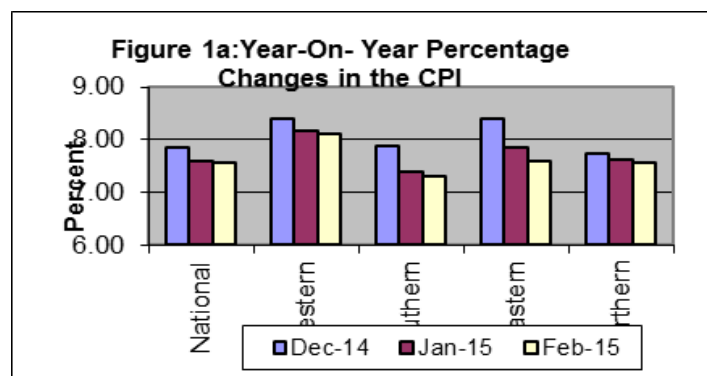
## CONSUMER PRICE INDEX (CPI) February, 2015: PRESS RELEASE

Released on Monday March 20, 2015 at 1:00 pm

### FEBRUARY 2015 MONTHLY INFLATION RATE INCREASES SLIGHTLY

The national monthly CPI (2007=100) increased from 239.05 per cent in January, 2015 to 240.27 per cent in February, 2015 resulting in a 0.51 per cent increase in inflation rate this month. Similarly, the monthly rates of inflation increased in all the regions. Western Area (0.59 per cent), Northern Region (0.50 per cent), Southern region (0.73 per cent) and the Eastern Region (0.52 per cent) comprising two centers, Kenema (0.47 per cent) and Kono (0.58 per cent) during the same period. Also, the national annual inflation rate for February, 2015 decreased slightly from 7.60 per cent in January, 2015 to 7.55 per cent in February, 2015. Again, the year-on-year rates of inflation decreased in all the regions. In Western region the year-on-year rates of inflation decreased slightly from 8.16 per cent to 8.11 per cent, in Northern region from 7.61 per cent to 7.56 per cent, in Eastern region from 7.84 per cent to 7.60 and in Southern region from 7.40 per cent to 7.31 per cent.

Figures 1.1 & 1.2 below illustrate the movement in year-on-year rates of inflation and monthly rates of inflation respectively for National CPI and other CPI centers while table 1 below shows National CPI from the months of February, 2014 to February, 2015 and the 12 month change in the CPI for the main index groups. Considering the old CPI series (1992=100), the year-on-year rates of inflation decreased slightly in Freetown from 8.64 per cent in January, 2015 to 8.26 per cent in February, 2015, in Makeni from 9.52 per cent to 8.71 per cent, in Kenema from 8.10 per cent to 8.0 per cent and in Bo from 8.37 per cent to 8.36 per cent during the same period.



### FACTORS INFLUENCING CHANGES IN THE MONTHLY RATE OF INFLATION

The national monthly CPI (2007=100) increased from 239.05% in January, 2015 to 240.27% in February, 2015 resulting in a 0.51% increase in inflation rate this month. However, this reflects a monthly increase that is greater than the previous month, meaning that prices are increasing at a slightly higher rate. There was a general increase in the price level in all the four regions which affected most of the components in the CPI basket.

At the national level, there were increases in the indices for the following groups; food and non-alcoholic beverages (0.23 per cent), housing, water, electricity, gas & other fuels (0.88 per cent), clothing and footwear (0.93 per cent), furnishing, household equipment and household maintenance (2.43 per cent), health (0.55 per cent), restaurant and hotels (2.0 per cent), transport (-1.57 per cent) and communication (0.85 per cent).

The food products for which indices increased this month include milk, cheese and eggs (1.10 per cent), vegetables (4.13 per cent) and fruits (1.75 per cent). The increase in health index in all the centers still continues as a result of the closure of many health centers across the country. However, there was a decrease on the price of fuel from L4,500 per litre to Le3,750 per litre on the 23<sup>rd</sup> January, 2015 but such decrease has little or no effect on the CPI basket.

More information can also be obtained from our website: [www.statistics.sl](http://www.statistics.sl)

**For More Detailed Information: Subscribe to the Detailed CPI Report.** Please Contact: The Statistician General, Statistics Sierra Leone P. O. Box 595, Tower Hill, Freetown, SIERRA LEONE Telephone: (232) 22- 223287 Call: (232) 76 – 609989 Facsimile: (232) 22- 223897 E-Mail: [statistics@statistics.sl](mailto:statistics@statistics.sl)/info@statistics.sl

## National CPI and Year-on- Year Rates of Inflation by Main COICOP Groups (2007=100)

		Feb-14	Nov-14	Dec-14	Jan-15	Feb-15			
COICOP	WEIGHT	Month Previous Year -	Month m-3 for Current Year,	Month m-2 for Current Year	Month m-1 for Current Year	Month m for Current Year	Monthly Change	3 Months Change	12 months Change
O	a	b	c	d	e	f	g	h	i
Food and Non-Alcoholic Beverage	41.86	247.24	263.78	264.96	265.20	265.80	0.23	0.76	7.51
Alcoholic Beverage, Tobacco and Narcotics	1.71	275.56	291.44	291.87	292.46	295.65	1.09	1.44	7.29
Clothing and Footwear	7.34	240.21	250.09	251.37	251.99	254.34	0.93	1.70	5.88
Housing, Water, Electricity, Gas and other Fuels	13.70	208.16	233.30	234.38	234.93	236.99	0.88	1.58	13.85
Furnishing, Household Equipment and Household Maintenance	5.86	252.56	263.91	264.76	266.35	272.83	2.43	3.38	8.02
Health	11.36	213.14	221.04	221.35	223.46	224.68	0.55	1.65	5.41
Transport	7.75	177.21	180.54	181.85	182.35	179.50	-1.57	-0.58	1.29
Communication	2.04	113.47	120.40	120.55	120.74	121.76	0.85	1.13	7.31
Recreation and Culture	1.47	168.23	174.78	175.41	176.00	177.08	0.61	1.32	5.26
Education	2.88	136.24	138.61	138.72	138.93	139.42	0.36	0.59	2.34
Restaurant and Hotels	0.92	161.20	183.62	185.73	187.35	191.09	2.00	4.07	18.54
Miscellaneous G&S	3.13	195.86	205.61	205.78	207.29	209.73	1.18	2.00	7.08
All Items	100	223.40	237.40	238.37	239.05	240.27	0.51	1.21	7.55

### Column description

Column o : COICOP 12 functions

Column a : CPI weighting

Column b : CPI of the given month (m) for previous year

Column c : CPI of the given month (m -3) for current year

Column d : CPI of the given month (m -2) for current year

Column e : CPI of the given month (m -1) for current year

Column g : CPI monthly change in %  $((f-e) \times 100 / e)$

Column h : CPI 3 months change in %  $((f-c) \times 100 / c)$

Column i : CPI 12 months change in %  $((f-b) \times 100 / b)$

The National CPI measures the change in prices, on average, from month to month, of the goods and services bought by most households, in Freetown, Bo, Kenema and Makeni including all expenditure groups and both families and single persons. Prices are collected for 251 items. All prices collected are the prevailing retail market prices from six (6) markets in the Greater Freetown area, three (3) Markets in Bo Town, three (3) markets in Kenema Town and two (2) markets in Makeni Town for weekly prices and other outlets for monthly items whose prices are less likely to fluctuate rapidly. The National Index was computed by aggregating the CPI for the four index towns previously published separately with different base periods. The old CPI series for Bo, Kenema, Makeni and Freetown were rebased to base year 2003, Computation methodology changed from the Modified to the Traditional Laspeyres, and transformed into the Classification of Individual Consumption by Purpose (COICOP) with 12 functions. The separate center CPIs were aggregated at the sub-class level at which level new weights were also introduced to obtain the Interim National Index.

## FREETOWN CONSUMER PRICE INDEX (1992=100)-OLD SERIES

	Food	Beverage. & Tobacco	Rent Rates & Repairs	Fuel & Power	Cloth & Footwear	Furniture Goods	Expan. Goods & services	Personal Transport	Transport & Comm.	Med. & Medicare	Education & Stationery	Enter & Recreation	Personal Goods & Services	All Items	Monthly % Change	Annual % Change
Wgts	54.13	3.63	3.92	6.51	7.35	1.86	2.46	1.16	4.77	3.45	4.11	3.72	2.93	100		
Jan-10	700.84	22.01	67.84	69.29	41.98	14.80	35.74	20.45	53.17	37.15	28.32	40.32	28.92	<b>1160.82</b>	3.30	14.16
Feb-10	734.77	22.59	67.85	73.66	43.0	14.95	35.52	21.27	57.50	38.55	28.32	42.09	30.01	<b>1210.07</b>	4.24	17.22
Mar-10	733.45	21.95	67.94	71.44	42.96	14.92	35.16	21.37	56.86	39.35	28.32	42.41	30.03	<b>1206.13</b>	-0.33	17.85
Apr-10	737.23	22.72	68.01	72.18	43.70	15.20	35.53	21.62	57.36	40.99	28.52	42.43	30.37	<b>1215.85</b>	0.81	18.42
May-10	724.65	23.67	68.01	72.65	44.01	15.38	35.92	21.79	57.10	42.87	29.08	42.46	30.52	<b>1208.11</b>	-0.64	17.85
Jun-10	740.95	23.91	67.94	72.98	45.19	16.14	37.59	22.24	58.80	42.40	29.77	44.40	30.91	<b>1233.23</b>	2.08	18.11
Jul-10	748.40	24.15	68.92	73.70	45.26	16.14	36.88	22.13	58.80	41.06	31.01	46.30	30.91	<b>1243.67</b>	0.85	18.21
Aug-10	774.54	24.26	68.92	74.48	46.10	16.19	37.43	22.16	58.80	39.92	31.46	46.59	31.25	<b>1272.10</b>	2.29	18.35
Sept-10	824.46	24.1	68.92	73.05	46.47	16.25	37.93	22.14	58.80	40.84	31.59	46.89	31.88	<b>1323.40</b>	4.03	18.51
Oct-10	822.73	25.08	69.91	73.53	47.16	16.49	37.25	22.29	58.80	41.30	31.59	48.20	32.13	<b>1326.46</b>	0.23	17.63
Nov-10	804.57	25.13	69.92	75.14	47.23	16.64	37.30	23.37	62.93	41.30	31.59	48.22	32.10	<b>1315.45</b>	-0.83	18.37
Dec-10	813.86	25.21	69.99	74.73	47.45	16.93	38.22	23.56	62.93	42.27	33.30	49.00	33.02	<b>1330.46</b>	1.14	18.40
Jan-11	852.82	25.21	69.16	74.98	47.82	16.80	37.79	23.95	62.96	45.34	33.30	51.34	33.85	<b>1375.32</b>	3.37	18.48
Feb-11	895.95	25.53	69.24	76.31	47.93	16.97	37.40	24.60	62.99	45.35	33.30	52.18	33.89	<b>1421.65</b>	3.37	17.48
Mar-11	894.25	24.49	69.34	75.74	48.11	17.17	37.55	25.49	62.99	46.04	33.30	55.04	34.51	<b>1424.02</b>	0.17	18.07
Apr-11	897.06	24.92	69.34	75.88	49.87	18.03	37.55	25.55	62.99	46.04	33.33	55.69	35.85	<b>1432.12</b>	0.57	18.32
May-11	904.62	24.95	69.34	81.13	51.09	18.20	37.36	27.84	74.11	46.09	33.34	55.69	36.01	<b>1459.77</b>	1.93	20.83
Jun-11	913.11	25.39	69.34	84.22	51.67	18.46	37.42	30.51	73.84	46.15	33.65	56.56	36.84	<b>1477.18</b>	1.19	19.78
Jul-11	928.86	25.39	69.34	86.71	53.75	19.28	37.47	31.20	73.84	47.80	33.65	56.56	40.11	<b>1503.96</b>	1.81	20.93
Aug-11	944.79	25.25	69.36	86.33	54.59	19.84	36.87	31.43	74.31	47.86	33.65	55.56	40.79	<b>1520.61</b>	1.11	19.53
Sept-11	969.14	25.31	69.36	86.46	55.75	19.78	36.90	31.49	74.31	48.93	33.65	55.56	41.51	<b>1548.15</b>	1.81	16.98
Oct-11	974.36	24.66	69.36	87.22	57.15	20.00	36.91	31.55	73.46	50.34	30.09	55.56	41.41	<b>1552.08</b>	0.25	17.01
Nov-11	975.93	24.96	69.36	87.89	57.52	20.25	36.07	31.73	74.68	50.93	30.05	53.35	40.44	<b>1553.16</b>	0.07	18.07
Dec-11	973.53	25.16	69.36	87.61	57.89	20.26	37.51	32.30	75.92	51.81	30.05	53.44	40.62	<b>1555.45</b>	0.15	16.91
Jan-12	1015.86	25.95	69.35	86.67	57.32	20.89	37.78	32.30	76.76	53.21	29.63	52.34	40.60	<b>1598.65</b>	2.78	16.24
Feb-12	1054.91	26.83	69.36	90.28	60.45	21.62	37.71	32.31	75.80	53.30	29.67	53.52	40.73	<b>1646.51</b>	2.99	15.82
Mar-12	1058.39	29.02	69.36	87.11	62.93	22.51	38.35	32.47	76.25	53.66	31.86	54.22	40.96	<b>1657.09</b>	0.64	16.37
Apr-12	1055.91	29.34	69.36	87.90	64.10	22.59	38.21	32.47	76.25	54.22	31.86	54.72	40.95	<b>1657.89</b>	0.05	16.42
May-12	1068.97	32.11	69.35	87.94	66.74	23.55	37.94	32.43	76.83	54.22	31.75	54.77	41.09	<b>1676.69</b>	1.13	14.86
Jun-12	1071.37	32.71	69.33	90.94	66.59	23.91	38.06	32.11	76.83	54.25	32.13	55.44	41.29	<b>1684.97</b>	0.49	14.07
Jul-12	1093.83	31.83	69.33	92.92	66.85	23.73	38.12	30.76	76.83	54.25	32.16	55.51	41.60	<b>1707.73</b>	1.35	13.55
Aug-12	1091.41	32.60	69.35	94.63	67.26	24.51	39.39	30.80	76.83	54.25	32.71	55.25	41.91	<b>1710.90</b>	0.19	12.51
Sept-12	1099.38	33.48	69.35	98.55	67.61	24.62	38.85	30.87	77.01	54.25	33.52	55.27	42.02	<b>1724.80</b>	0.81	11.41
Oct-12	1104.56	34.44	69.35	99.56	67.97	24.71	38.95	30.89	77.01	54.56	34.38	55.61	42.03	<b>1734.01</b>	0.53	11.72
Nov-12	1107.91	35.02	69.35	102.64	67.99	24.47	39.02	30.92	77.84	54.56	34.93	55.58	41.97	<b>1732.70</b>	0.47	12.17
Dec-12	1112.04	34.30	69.35	102.64	66.65	24.43	39.02	30.95	77.84	54.56	34.93	55.58	40.46	<b>1742.78</b>	0.03	11.86
Jan-13	1144.85	34.20	69.35	106.92	66.06	24.44	39.03	31.18	78.02	54.56	34.93	55.58	40.46	<b>1779.58</b>	2.11	11.32
Feb-13	1180.29	34.30	69.35	111.72	66.59	24.52	39.13	31.18	78.02	55.21	34.93	55.99	40.32	<b>1821.54</b>	2.36	10.63
Mar-13	1192.37	34.30	69.35	116.32	65.95	24.45	39.29	31.27	78.28	55.21	34.93	55.99	39.82	<b>1837.52</b>	0.88	10.89
Apr-13	1199.88	34.14	70.33	111.67	66.16	23.99	39.54	31.30	79.11	56.25	34.93	55.99	39.67	<b>1842.98</b>	0.30	11.16
May-13	1211.25	34.18	70.33	105.80	67.09	23.23	39.59	31.34	79.11	56.11	34.93	56.06	40.07	<b>1849.08</b>	0.33	10.28
Jun-13	1221.22	34.18	70.30	105.25	67.40	23.20	39.18	31.34	79.11	56.11	35.58	52.89	40.11	<b>1855.88</b>	0.37	10.14
Jul-13	1233.91	34.19	70.31	105.97	67.79	23.03	38.55	31.36	79.11	56.79	36.29	52.89	40.08	<b>1870.28</b>	0.78	9.52
Aug-13	1232.00	34.20	70.31	106.23	67.83	22.61	38.60	32.20	79.11	56.70	37.90	52.96	39.99	<b>1870.65</b>	0.02	9.34
Sept-13	1239.83	33.92	70.30	106.74	67.76	23.54	38.39	32.19	79.11	56.67	40.09	52.96	39.80	<b>1881.30</b>	0.57	9.07
Oct-13	1244.89	34.60	72.26	106.45	67.93	23.69	38.13	32.17	79.11	57.39	40.17	52.96	39.04	<b>1888.80</b>	0.40	8.93
Nov-13	1237.85	34.67	72.26	108.21	67.57	23.76	38.11	32.08	79.07	58.27	40.22	52.96	38.65	<b>1883.69</b>	-0.27	8.71
Dec-13	1244.01	34.68	72.26	109.96	67.51	23.75	38.11	31.91	79.09	58.27	40.30	52.96	38.55	<b>1891.35</b>	0.41	8.53
Jan-14	1273.65	34.52	72.26	111.85	67.45	23.87	38.29	31.78	79.09	58.90	40.43	52.82	38.60	<b>1923.50</b>	1.70	8.09
Feb-14	1317.75	33.77	72.26	113.61	57.15	23.79	38.38	31.63	79.09	59.56	40.45	52.82	38.51	<b>1959.60</b>	1.88	7.58
Mar-14	1331.76	34.70	72.2	115.46	56.49	23.85	38.55	31.68	79.09	59.56	40.45	52.82	38.53	<b>1975.17</b>	0.79	7.49
Apr-14	1350.23	34.48	72.26	107.22	55.80	23.21	38.06	31.64	79.09	57.25	40.45	51.06	37.72	<b>1978.46</b>	0.17	7.35
May-14	1358.09	34.73	72.26	107.61	55.89	23.15	38.24	31.65	79.09	57.28	40.45	51.12	37.73	<b>1987.28</b>	0.45	7.47
June-14	1365.34	34.75	72.28	109.57	56.37	23.41	38.36	31.69	80.75	58.22	40.61	51.27	37.91	<b>2000.54</b>	0.67	7.79
Jul-14	1375.54	34.87	74.45	110.79	56.94	23.50	38.36	31.76	81.81	58.91	40.82	51.34	38.12	<b>2017.21</b>	0.83	7.86
Aug-14	1385.04	35.05	77.51	112.52	57.46	23.65	38.42	31.83	82.06	59.73	41.08	51.34	39.14	<b>2034.84</b>	0.87	8.78
Sept-14	1390.15	37.41	78.52	114.31	58.21	24.01	38.71	31.86	83.30	59.91	41.24	51.04	39.15	<b>2047.82</b>	0.64	8.85
Oct-14	1392.09	37.43	80.52	117.67	58.85	24.16	38.71	31.86	83.39	60.66	41.34	51.04	39.29	<b>2057.01</b>	0.45	8.91
Nov-14	1382.31	37.39	83.63	121.78	59.45	24.37	38.71	31.86	84.31	61.99	43.28	51.05	39.46	<b>2059.59</b>	0.13	9.34
Dec-14	1386.77	37.56	91.98	123.84	60.64	24.67	38.71	31.87	85.18	62.34	43.36	51.05	39.53	<b>2077.52</b>	0.87	9.84
Jan-15	1391.94	37.74	92.00	126.93	61.59	24.71	38.74	31.87	85.69	64.22	43.40	51.04	39.81	<b>2089.67</b>	0.58	8.64
Feb-15	1417.09	38.52	92.12	132.24	62.18	24.97	38.84	28.94	85.69	66.13	43.42	51.10	40.29	<b>2121.51</b>	1.52	8.26