



CONSUMER PRICE INDEX (CPI) May 2012: PRESS RELEASE

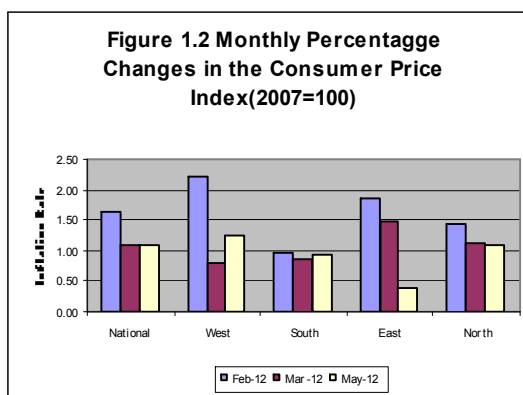
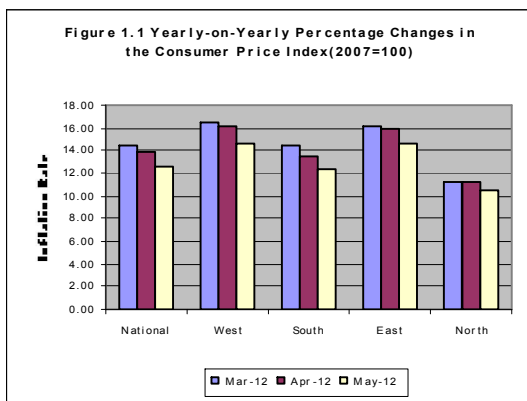
Released on Tuesday June 19, 2012 at 1:00 pm

MAY 2012 MONTHLY INFLATION RATE INCREASES SLIGHTLY

The combined monthly CPI (2007=100) for May 2012 increased from 190.65 per cent in April 2012 to 192.72 per cent in May 2012 resulting in a 1.09 per cent increase in inflation rate this month. Similarly, the monthly rates of inflation increased in all the regions. Western Area (1.25 per cent), Northern Region (1.09 per cent), Southern region(0.92 per cent) and the Eastern Region(0.40 per cent) comprising of two centers, Kenema(1.25 per cent) and Kono (0.73 per cent) during the same period. Again, the composite year-on-year inflation rate (2006/2007=100) increased by 1.39 percentage point from 13.91 per cent in April 2012 to 12.52 per cent in May 2012.

The year-on-year rates of inflation decreased in all the regions when the year-on-year rates of inflation for April 2012 are compared with those for May 2012. In Eastern region the year-on-year rate of inflation decreased from 15.97 percent in April 2012 to 14.66 percent in May 2012, in Western Area from 16.09 per cent to 14.54 per cent, in Northern region from 11.33 per cent to 10.44 per cent and in Southern region from 13.53 per cent to 12.37 per cent while during the period under review.

Considering the old CPI series (1992=100), the year-on-year rates of inflation decreased in all the centers when the year-on-year rates of inflation for April 2012 are compared with those for May 2012. In Freetown the year-on-year rate of inflation decreased from 15.76 percent in April 2012 to 14.86 percent in May 201, in Kenema from 16.94 per cent to 15.50 per cent, in Bo from 16.89 per cent to 15.02 per cent and in Makeni from 21.02 per cent to 20.64 per cent per cent during the same period.



FACTORS INFLUENCING CHANGES IN THE MONTHLY RATE OF INFLATION

The national monthly CPI for May increased from 190.65 in April 2012 to 192.72 in May, 2012 resulting in a 1.09 per cent increase in inflation rate this month. The slight increase was mainly due to increases in the prices for food and non-alcoholic beverages (1.15 per cent), clothing and footwear (3.07 per cent), furnishing, household equipment and household maintenance (0.73 per cent), health (0.07 per cent), recreation and culture (0.28 per cent), alcoholic beverages, tobacco and narcotics (1.21 per cent) and restaurant and hotels(3.63 per cent).

The food products which prices increased this month include; bread and cereals(1.28 per cent), fish and seafood(1.99 per cent), meat (0.45 percent), fruits(1.76 per cent), milk, cheese and eggs(1.86 per cent) and vegetables(1.51 percent).

More information can also be obtained from our website: www.statistics.sl
For More Detailed Information: Subscribe to the Detailed CPI Report. Please Contact: The Statistician General, Statistics Sierra Leone P. O. Box 595, Tower Hill, Freetown, SIERRA LEONE Telephone: (232) 22- 223287 Call: (232) 76 - 609989 Facsimile: (232) 22- 223897 E-Mail: statistics@statistics.sl OR info@statistics.sl

The All Urban National Consumer Price Indices (2007=100) by Main COICOP Groups

COICOP	WEIGHT	May-11 Month Previous Year -	Feb-12 Month m-3 for Current Year,	Mar-12 Month m-2 for Current Year	Apr-12 Month m-1 for Current Year	May-12 Month m for Current Year	Monthly Change	3 Months Change	12 months Change
O	A	B	C	D	E	F	G	H	I
Food and Non-Alcoholic Beverage	41.86	182.97	201.39	206.18	210.72	213.15	1.15	5.84	16.50
Alcoholic Beverage, Tobacco and Narcotics	1.71	196.94	214.56	218.91	223.25	225.94	1.21	5.31	14.72
Clothing and Footwear	7.34	152.41	176.45	181.94	186.56	192.29	3.07	8.98	26.17
Housing, Water, Electricity, Gas and other Fuels	13.70	169.88	173.13	173.94	176.48	179.53	1.73	3.70	5.68
Furnishing, Household Equipment and Household Maintenance	5.86	184.55	205.69	206.56	208.24	209.75	0.73	1.98	13.65
Health	11.36	177.11	180.28	183.17	187.72	187.85	0.07	4.20	6.07
Transport	7.75	157.29	157.72	156.34	156.33	156.26	-0.04	-0.92	-0.65
Communication	2.04	107.78	108.25	108.30	108.41	109.03	0.57	0.72	1.16
Recreation and Culture	1.47	153.34	158.31	159.30	160.91	161.37	0.28	1.93	5.24
Education	2.88	124.44	133.99	134.02	134.03	134.03	0.00	0.03	7.70
Restaurant and hotels	0.92	113.96	120.88	126.62	129.51	134.21	3.63	11.03	17.77
Miscellaneous G&S	3.13	149.26	170.84	172.81	176.08	176.37	0.17	3.24	18.17
All items	100.00	171.27	184.22	187.22	190.65	192.72	1.09	4.61	12.52
Column Description									
Column O : COICOP 12 Functions									
Column A : CPI Weighting									
Column B : CPI Of The Given Month (M) For Previous Year									
Column C : CPI Of The Given Month (M -3) For Current Year									
Column D : CPI Of The Given Month (M -2) For Current Year									
Column E : CPI Of The Given Month (M -1) For Current Year									
Column G : CPI Monthly Change In % $((F-E) \times 100 / E)$									
Column H : CPI 3 Months Change In % $((F-C) \times 100 / C)$									
Column I: CPI 12 Months Change In % $((F-B) \times 100/B)$.									

The Interim National CPI measures the change in prices, on average, from month to month, of the goods and services bought by most households, in Freetown, Bo, Kenema and Makeni including all expenditure groups and both families and single persons. Prices are collected for 251 items. All prices collected are the prevailing retail market prices from six (6) markets in the Greater Freetown area, three (3) Markets in Bo Town, three (3) markets in Kenema Town and two (2) markets in Makeni Town for weekly prices and other outlets for monthly items whose prices are less likely to fluctuate rapidly. The National Index was computed by aggregating the CPI for the four index towns previously published separately with different base periods. The old CPI series for Bo, Kenema, Makeni and Freetown were rebased to base year 2003, Computation methodology changed from the Modified to the Traditional Laspeyres, and transformed into the Classification of Individual Consumption by Purpose (COICOP) with 12 functions. The separate center CPIs were aggregated at the sub-class level at which level new weights were also introduced to obtain the Interim National Index.

FREETOWN CONSUMER PRICE INDEX (1992=100)-OLD SERIES

	Food	Beverage, & Tobacco	Rent Rates & Repairs	Fuel & Power	Cloth & Footwear	Furniture Goods	Expan. Goods & services	Personal Transport	Tran sport & Comm.	Med. & Medicare	Education & Stationery	Enter & Recreation	Personal Goods & Services	All Items	Monthly % Change	Annual % Change
Wgts	54.13	3.63	3.92	6.51	7.35	1.86	2.46	1.16	4.77	3.45	4.11	3.72	2.93	100		
Jan-09	628.46	20.70	57.32	59.76	35.08	13.03	30.20	16.06	45.60	27.46	23.80	35.96	23.38	1016.80	0.24	11.18
Feb-09	632.06	20.30	62.22	64.14	35.43	12.98	29.32	15.70	47.26	27.46	25.24	36.86	23.30	1032.27	1.52	9.75
Mar-09	625.01	19.98	62.22	62.52	35.88	12.91	28.91	15.50	47.26	27.46	25.24	37.39	23.19	1023.47	-0.85	9.72
Apr-09	624.77	20.22	62.22	65.84	35.84	12.95	28.60	15.40	47.65	27.46	25.26	37.39	23.13	1026.73	0.32	8.97
May-09	623.85	19.85	62.22	65.22	36.35	12.94	28.05	15.40	47.65	27.46	25.62	37.35	23.19	1025.16	0.15	6.79
Jun-09	633.82	19.84	62.22	67.91	36.40	13.34	27.77	17.81	50.96	27.54	25.58	37.35	23.58	1044.11	1.85	7.78
Jul-09	640.20	19.90	62.22	65.86	36.68	13.56	29.35	17.81	52.25	27.54	25.54	37.64	23.55	1052.10	0.76	7.61
Aug-09	650.61	19.70	62.22	66.31	37.71	13.88	31.37	18.79	52.28	33.57	26.41	37.60	24.44	1074.88	2.17	8.34
Sept-09	680.43	19.97	62.27	67.18	39.41	14.25	33.98	19.97	52.28	35.95	28.28	37.81	25.00	1116.74	3.89	9.61
Oct-09	693.19	20.36	62.66	67.81	40.24	14.21	30.57	20.32	52.37	35.07	27.58	37.79	25.44	1127.62	0.97	10.77
Nov-09	670.86	20.39	62.66	68.72	41.58	14.40	31.81	20.27	52.90	35.50	27.68	38.60	25.88	1111.27	-1.45	9.69
Dec-09	677.64	20.98	64.91	69.08	41.47	14.32	32.54	20.14	53.17	35.79	28.05	38.98	26.67	1123.73	1.12	10.78
Jan-10	700.84	22.01	67.84	69.29	41.98	14.80	35.74	20.45	53.17	37.15	28.32	40.32	28.92	1160.82	3.30	14.16
Feb-10	734.77	22.59	67.85	73.66	43.0	14.95	35.52	21.27	57.50	38.55	28.32	42.09	30.01	1210.07	4.24	17.22
Mar-10	733.45	21.95	67.94	71.44	42.96	14.92	35.16	21.37	56.86	39.35	28.32	42.41	30.03	1206.13	-0.33	17.85
Apr-10	737.23	22.72	68.01	72.18	43.70	15.20	35.53	21.62	57.36	40.99	28.52	42.43	30.37	1215.85	0.81	18.42
May-10	724.65	23.67	68.01	72.65	44.01	15.38	35.92	21.79	57.10	42.87	29.08	42.46	30.52	1208.11	-0.64	17.85
Jun-10	740.95	23.91	67.94	72.98	45.19	16.14	37.59	22.24	58.80	42.40	29.77	44.40	30.91	1233.23	2.08	18.11
Jul-10	748.40	24.15	68.92	73.70	45.26	16.14	36.88	22.13	58.80	41.06	31.01	46.30	30.91	1243.67	0.85	18.21
Aug-10	774.54	24.26	68.92	74.48	46.10	16.19	37.43	22.16	58.80	39.92	31.46	46.59	31.25	1272.10	2.29	18.35
Sept-10	824.46	24.1	68.92	73.05	46.47	16.25	37.93	22.14	58.80	40.84	31.59	46.89	31.88	1323.40	4.03	18.51
Oct-10	822.73	25.08	69.91	73.53	47.16	16.49	37.25	22.29	58.80	41.30	31.59	48.20	32.13	1326.46	0.23	17.63
Nov-10	804.57	25.13	69.92	75.14	47.23	16.64	37.30	23.37	62.93	41.30	31.59	48.22	32.10	1315.45	-0.83	18.37
Dec-10	813.86	25.21	69.99	74.73	47.45	16.93	38.22	23.56	62.93	42.27	33.30	49.00	33.02	1330.46	1.14	18.40
Jan-11	852.82	25.21	69.16	74.98	47.82	16.80	37.79	23.95	62.96	45.34	33.30	51.34	33.85	1375.32	3.37	18.48
Feb-11	895.95	25.53	69.24	76.31	47.93	16.97	37.40	24.60	62.99	45.35	33.30	52.18	33.89	1421.65	3.37	17.48
Mar-11	894.25	24.49	69.34	75.74	48.11	17.17	37.55	25.49	62.99	46.04	33.30	55.04	34.51	1424.02	0.17	18.07
Apr-11	897.06	24.92	69.34	75.88	49.87	18.03	37.55	25.55	62.99	46.04	33.33	55.69	35.85	1432.12	0.57	18.32
May-11	904.62	24.95	69.34	81.13	51.09	18.20	37.36	27.84	74.11	46.09	33.34	55.69	36.01	1459.77	1.93	20.83
Jun-11	913.11	25.39	69.34	84.22	51.67	18.46	37.42	30.51	73.84	46.15	33.65	56.56	36.84	1477.18	1.19	19.78
Jul-11	928.86	25.39	69.34	86.71	53.75	19.28	37.47	31.20	73.84	47.80	33.65	56.56	40.11	1503.96	1.81	20.93
Aug-11	944.79	25.25	69.36	86.33	54.59	19.84	36.87	31.43	74.31	47.86	33.65	55.56	40.79	1520.61	1.11	19.53
Sept-11	969.14	25.31	69.36	86.46	55.75	19.78	36.90	31.49	74.31	48.93	33.65	55.56	41.51	1548.15	1.81	16.98
Oct-11	974.36	24.66	69.36	87.22	57.15	20.00	36.91	31.55	73.46	50.34	30.09	55.56	41.41	1552.08	0.25	17.01
Nov-11	975.93	24.96	69.36	87.89	57.52	20.25	36.07	31.73	74.68	50.93	30.05	53.35	40.44	1553.16	0.07	18.07
Dec-11	973.53	25.16	69.36	87.61	57.89	20.26	37.51	32.30	75.92	51.81	30.05	53.44	40.62	1555.45	0.15	16.91
Jan-12	1015.86	25.95	69.35	86.67	57.32	20.89	37.78	32.30	76.76	53.21	29.63	52.34	40.60	1598.65	2.78	16.24
Feb-12	1054.91	26.83	69.36	90.28	60.45	21.62	37.71	32.31	75.80	53.30	29.67	53.52	40.73	1646.51	2.99	15.82
Mar-12	1058.39	29.02	69.36	87.11	62.93	22.51	38.35	32.47	76.25	53.66	31.86	54.22	40.96	1657.09	0.64	16.37
Apr-12	1055.91	29.34	69.36	87.90	64.10	22.59	38.21	32.47	76.25	54.22	31.86	54.72	40.95	1657.89	0.05	16.42
May-12	1068.97	32.11	69.35	87.94	66.74	23.55	37.94	32.43	76.83	54.22	31.75	54.77	41.09	1676.69	1.13	14.86