



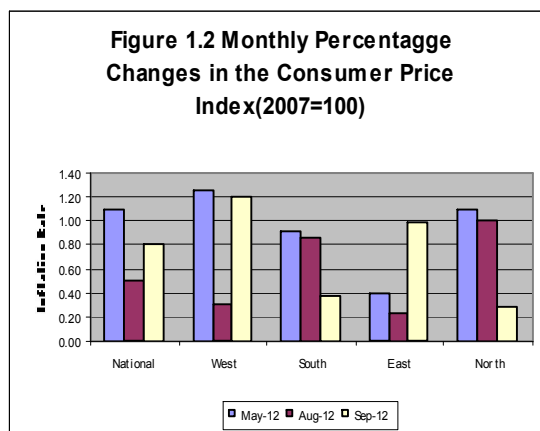
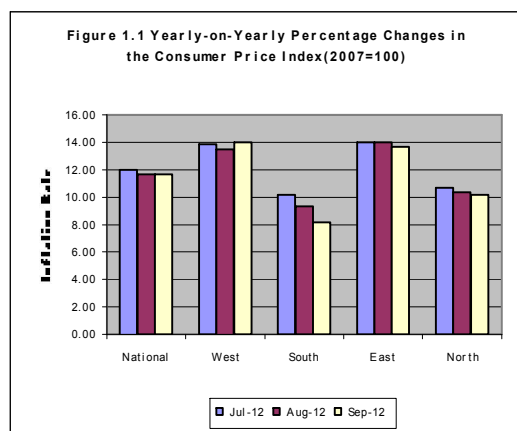
CONSUMER PRICE INDEX (CPI) September, 2012: PRESS RELEASE

Released on Monday October 22, 2012 at 1:00 pm

SEPTEMBER 2012 MONTHLY INFLATION RATE INCREASES SLIGHTLY

The national monthly CPI (2007=100) increased from 196.97 per cent in August 2012 to 198.57 per cent in September 2012 resulting in a 0.82 per cent increase in inflation rate this month. The September, 2012 monthly inflation rate was therefore down by 0.05 percentage point when compared with the August, 2012 inflation figure. Similarly, the monthly rates of inflation increased slightly in all the regions. Western Area (1.21 per cent), Northern Region (0.29 per cent), Southern region (0.38 per cent) and the Eastern Region (0.99 per cent) comprising of two centers, Kenema (1.11 per cent) and Kono (0.86 per cent) during the same period.

The annual Inflation rate for September 2012 decreased slightly from 11.69 per cent in August 2012 to 11.60 per cent in September 2012. This reflects a 0.09 percentage point decrease over August 2012. Considering the old CPI series (1992=100), the year-on-year rates of inflation decreased in Makeni from 16.01 per cent to 14.17 per cent, in Bo from 15.57 per cent to 15.22 per cent and in Freetown from 12.51 per cent to 11.41 per cent while the year-on-year rate of inflation increased in Kenema from 13.90 per cent to 13.93 per cent during the same period.



FACTORS INFLUENCING CHANGES IN THE MONTHLY RATE OF INFLATION

The national monthly CPI (2007=100) for September 2012 increased from 196.97 per cent in August 2012 to 198.57 per cent in September 2012 resulting in a 0.82 per cent increase in inflation rate this month. Nevertheless, this reflects a monthly increase that is lower than the previous month, meaning that prices are increasing but at a decreasing rate.

The indices for all the main components increased. On a composite basis, there were increases in the indices for the following groups; food and non-alcoholic beverages (0.89 per cent), alcoholic beverages, tobacco and narcotics (0.72 per cent), furnishing, household equipment and household maintenance (0.86 per cent), recreation and culture (0.19 per cent) and restaurants and hotels (1.22 per cent), health (1.08 per cent), transport (0.10 per cent) and communication (0.40 per cent) and education (0.03 per cent).

The food products which prices increased this month include; bread and cereals (0.39 per cent), fish and seafood (3.19 per cent), fruits (0.25 per cent), oils and fats (1.85 per cent), milk, cheese and eggs (0.23 per cent) and vegetables (0.44 per cent). This price increase may probably due to the reopening of the first term school academic year which has contributed to the slight increase in the index for education (0.03 per cent).

More information can also be obtained from our website: www.statistics.sl

For More Detailed Information: Subscribe to the Detailed CPI Report Please Contact: The Statistician General, Statistics Sierra Leone P. O. Box 595, Tower Hill, Freetown, SIERRA LEONE Telephone: (232) 22- 223287 Call: (232) 76 - 609989 Facsimile: (232) 22- 223897 E-Mail: statistics@statistics.sl OR info@statistics.sl

NATIONAL CPI AND YEAR-ON- YEAR RATES OF INFLATION BY MAIN COICOP GROUPS (2003=100)

		Sept-11	Jun-12	Jul-12	Aug-12	Sept-12			
COICOP	WEIGHT	Month Previous Year -	Month m-3 for Current Year,	Month m-2 for Current Year	Month m-1 for Current Year	Month m for Current Year	Monthly Change	3 Months Change	12 months Change
O	a	b	c	d	e	f	g	h	i
Food and Non-Alcoholic Beverage	41.86	194.44	213.15	217.10	219.00	220.95	0.89	3.66	13.63
Alcoholic Beverage, Tobacco and Narcotics	1.71	201.11	225.94	231.73	233.19	234.86	0.72	3.95	16.78
Clothing and Footwear	7.34	165.89	192.29	198.03	200.03	203.50	1.74	5.83	22.67
Housing, Water, Electricity, Gas and other Fuels	13.70	167.58	179.53	180.04	181.51	182.31	0.44	1.55	8.79
Furnishing, Household Equipment and Household Maintenance	5.86	194.32	209.75	211.85	213.92	215.75	0.86	2.86	11.03
Health	11.36	180.74	187.85	187.93	190.30	192.36	1.08	2.40	6.43
Transport	7.75	152.73	156.26	158.12	159.68	159.84	0.10	2.29	4.66
Communication	2.04	108.16	109.03	109.43	109.43	109.87	0.40	0.76	1.58
Recreation and Culture	1.47	158.86	161.37	155.49	155.80	156.10	0.19	-3.26	-1.73
Education	2.88	124.45	134.03	134.03	134.03	134.06	0.03	0.03	7.72
Restaurant and hotels	0.92	116.19	134.21	134.57	136.84	138.51	1.22	3.20	19.21
Miscellaneous G&S	3.13	161.10	176.37	179.09	179.41	180.05	0.36	2.09	11.77
All items	100.00	177.93	192.72	195.25	196.97	198.58	0.82	3.04	11.60
Column Description									
Column o : COICOP 12 functions									
Column a : CPI weighting									
Column b : CPI of the given month (m) for previous year									
Column c : CPI of the given month (m -3) for current year									
Column d : CPI of the given month (m -2) for current year									
Column e : CPI of the given month (m -1) for current year									
Column g : CPI monthly change in % ((f-e) x 100 /e)									
Column h : CPI 3 months change in % ((f-c) x 100 /c)									
Column i : CPI 12 months change in % ((f-b) x 100/b).									

The National CPI measures the change in prices, on average, from month to month, of the goods and services bought by most households, in Freetown, Bo, Kenema and Makeni including all expenditure groups and both families and single persons. Prices are collected for 251 items. All prices collected are the prevailing retail market prices from six (6) markets in the Greater Freetown area, three (3) Markets in Bo Town, three (3) markets in Kenema Town and two (2) markets in Makeni Town for weekly prices and other outlets for monthly items whose prices are less likely to fluctuate rapidly. The National Index was computed by aggregating the CPI for the four index towns previously published separately with different base periods. The old CPI series for Bo, Kenema, Makeni and Freetown were rebased to base year 2003, Computation methodology changed from the Modified to the Traditional Laspeyres, and transformed into the Classification of Individual Consumption by Purpose (COICOP) with 12 functions. The separate center CPIs were aggregated at the sub-class level at which level new weights were also introduced to obtain the Interim National Index.

FREETOWN CONSUMER PRICE INDEX (1992=100)-OLD SERIES

	Food	Beverage, & Tobacco	Rent Rates & Repairs	Fuel & Power	Cloth & Footwear	Furniture Goods	Expan. Goods & services	Personal Transport	Tran sport & Communication	Med. & Medicare	Education & Stationery	Enter & Recreation	Personal Goods & Services	All Items	Monthly % Change	Annual % Change
Wgts	54.13	3.63	3.92	6.51	7.35	1.86	2.46	1.16	4.77	3.45	4.11	3.72	2.93	100		
Jan-09	628.46	20.70	57.32	59.76	35.08	13.03	30.20	16.06	45.60	27.46	23.80	35.96	23.38	1016.80	0.24	11.18
Feb-09	632.06	20.30	62.22	64.14	35.43	12.98	29.32	15.70	47.26	27.46	25.24	36.86	23.30	1032.27	1.52	9.75
Mar-09	625.01	19.98	62.22	62.52	35.88	12.91	28.91	15.50	47.26	27.46	25.24	37.39	23.19	1023.47	-0.85	9.72
Apr-09	624.77	20.22	62.22	65.84	35.84	12.95	28.60	15.40	47.65	27.46	25.26	37.39	23.13	1026.73	0.32	8.97
May-09	623.85	19.85	62.22	65.22	36.35	12.94	28.05	15.40	47.65	27.46	25.62	37.35	23.19	1025.16	0.15	6.79
Jun-09	633.82	19.84	62.22	67.91	36.40	13.34	27.77	17.81	50.96	27.54	25.58	37.35	23.58	1044.11	1.85	7.78
Jul-09	640.20	19.90	62.22	65.86	36.68	13.56	29.35	17.81	52.25	27.54	25.54	37.64	23.55	1052.10	0.76	7.61
Aug-09	650.61	19.70	62.22	66.31	37.71	13.88	31.37	18.79	52.28	33.57	26.41	37.60	24.44	1074.88	2.17	8.34
Sept-09	680.43	19.97	62.27	67.18	39.41	14.25	33.98	19.97	52.28	35.95	28.28	37.81	25.00	1116.74	3.89	9.61
Oct-09	693.19	20.36	62.66	67.81	40.24	14.21	30.57	20.32	52.37	35.07	27.58	37.79	25.44	1127.62	0.97	10.77
Nov-09	670.86	20.39	62.66	68.72	41.58	14.40	31.81	20.27	52.90	35.50	27.68	38.60	25.88	1111.27	-1.45	9.69
Dec-09	677.64	20.98	64.91	69.08	41.47	14.32	32.54	20.14	53.17	35.79	28.05	38.98	26.67	1123.73	1.12	10.78
Jan-10	700.84	22.01	67.84	69.29	41.98	14.80	35.74	20.45	53.17	37.15	28.32	40.32	28.92	1160.82	3.30	14.16
Feb-10	734.77	22.59	67.85	73.66	43.0	14.95	35.52	21.27	57.50	38.55	28.32	42.09	30.01	1210.07	4.24	17.22
Mar-10	733.45	21.95	67.94	71.44	42.96	14.92	35.16	21.37	56.86	39.35	28.32	42.41	30.03	1206.13	-0.33	17.85
Apr-10	737.23	22.72	68.01	72.18	43.70	15.20	35.53	21.62	57.36	40.99	28.52	42.43	30.37	1215.85	0.81	18.42
May-10	724.65	23.67	68.01	72.65	44.01	15.38	35.92	21.79	57.10	42.87	29.08	42.46	30.52	1208.11	-0.64	17.85
Jun-10	740.95	23.91	67.94	72.98	45.19	16.14	37.59	22.24	58.80	42.40	29.77	44.40	30.91	1233.23	2.08	18.11
Jul-10	748.40	24.15	68.92	73.70	45.26	16.14	36.88	22.13	58.80	41.06	31.01	46.30	30.91	1243.67	0.85	18.21
Aug-10	774.54	24.26	68.92	74.48	46.10	16.19	37.43	22.16	58.80	39.92	31.46	46.59	31.25	1272.10	2.29	18.35
Sept-10	824.46	24.1	68.92	73.05	46.47	16.25	37.93	22.14	58.80	40.84	31.59	46.89	31.88	1323.40	4.03	18.51
Oct-10	822.73	25.08	69.91	73.53	47.16	16.49	37.25	22.29	58.80	41.30	31.59	48.20	32.13	1326.46	0.23	17.63
Nov-10	804.57	25.13	69.92	75.14	47.23	16.64	37.30	23.37	62.93	41.30	31.59	48.22	32.10	1315.45	-0.83	18.37
Dec-10	813.86	25.21	69.99	74.73	47.45	16.93	38.22	23.56	62.93	42.27	33.30	49.00	33.02	1330.46	1.14	18.40
Jan-11	852.82	25.21	69.16	74.98	47.82	16.80	37.79	23.95	62.96	45.34	33.30	51.34	33.85	1375.32	3.37	18.48
Feb-11	895.95	25.53	69.24	76.31	47.93	16.97	37.40	24.60	62.99	45.35	33.30	52.18	33.89	1421.65	3.37	17.48
Mar-11	894.25	24.49	69.34	75.74	48.11	17.17	37.55	25.49	62.99	46.04	33.30	55.04	34.51	1424.02	0.17	18.07
Apr-11	897.06	24.92	69.34	75.88	49.87	18.03	37.55	25.55	62.99	46.04	33.33	55.69	35.85	1432.12	0.57	18.32
May-11	904.62	24.95	69.34	81.13	51.09	18.20	37.36	27.84	74.11	46.09	33.34	55.69	36.01	1459.77	1.93	20.83
Jun-11	913.11	25.39	69.34	84.22	51.67	18.46	37.42	30.51	73.84	46.15	33.65	56.56	36.84	1477.18	1.19	19.78
Jul-11	928.86	25.39	69.34	86.71	53.75	19.28	37.47	31.20	73.84	47.80	33.65	56.56	40.11	1503.96	1.81	20.93
Aug-11	944.79	25.25	69.36	86.33	54.59	19.84	36.87	31.43	74.31	47.86	33.65	55.56	40.79	1520.61	1.11	19.53
Sept-11	969.14	25.31	69.36	86.46	55.75	19.78	36.90	31.49	74.31	48.93	33.65	55.56	41.51	1548.15	1.81	16.98
Oct-11	974.36	24.66	69.36	87.22	57.15	20.00	36.91	31.55	73.46	50.34	30.09	55.56	41.41	1552.08	0.25	17.01
Nov-11	975.93	24.96	69.36	87.89	57.52	20.25	36.07	31.73	74.68	50.93	30.05	53.35	40.44	1553.16	0.07	18.07
Dec-11	973.53	25.16	69.36	87.61	57.89	20.26	37.51	32.30	75.92	51.81	30.05	53.44	40.62	1555.45	0.15	16.91
Jan-12	1015.86	25.95	69.35	86.67	57.32	20.89	37.78	32.30	76.76	53.21	29.63	52.34	40.60	1598.65	2.78	16.24
Feb-12	1054.91	26.83	69.36	90.28	60.45	21.62	37.71	32.31	75.80	53.30	29.67	53.52	40.73	1646.51	2.99	15.82
Mar-12	1058.39	29.02	69.36	87.11	62.93	22.51	38.35	32.47	76.25	53.66	31.86	54.22	40.96	1657.09	0.64	16.37
Apr-12	1055.91	29.34	69.36	87.90	64.10	22.59	38.21	32.47	76.25	54.22	31.86	54.72	40.95	1657.89	0.05	16.42
May-12	1068.97	32.11	69.35	87.94	66.74	23.55	37.94	32.43	76.83	54.22	31.75	54.77	41.09	1676.69	1.13	14.86
Jun-12	1071.37	32.71	69.33	90.94	66.59	23.91	38.06	32.11	76.83	54.25	32.13	55.44	41.29	1684.97	0.49	14.07
Jul-12	1093.83	31.83	69.33	92.92	66.85	23.73	38.12	30.76	76.83	54.25	32.16	55.51	41.60	1707.73	1.35	13.55
Aug-12	1091.41	32.60	69.35	94.63	67.26	24.51	39.39	30.80	76.83	54.25	32.71	55.25	41.91	1710.90	0.19	12.51
Sept-12	1099.38	33.48	69.35	98.55	67.61	24.62	38.85	30.87	77.01	54.25	33.52	55.27	42.02	1724.80	0.81	11.41