



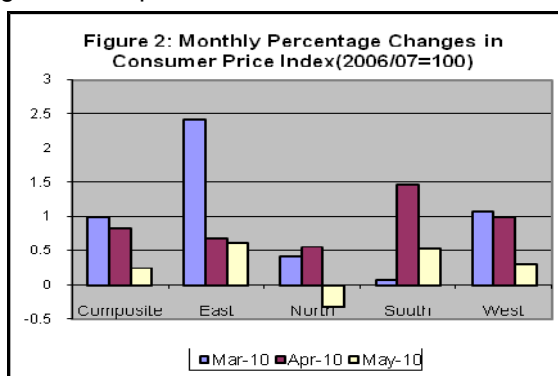
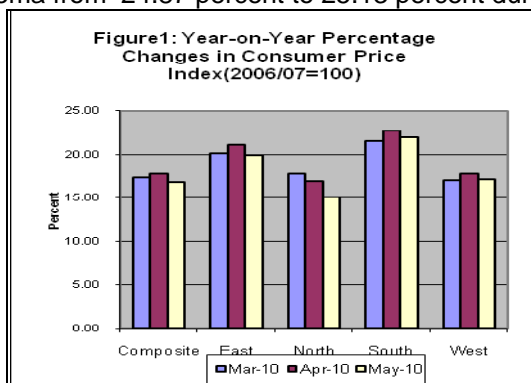
## CONSUMER PRICE INDEX (CPI) MAY 2010: PRESS RELEASE

Released on Tuesday June 22<sup>nd</sup> at 1:00 pm

### MAY 2010 MONTHLY INFLATION RATE INCREASES SLIGHTLY

The Sierra Leone composite consumer price index (2006/2007=100) increased from 145.0 in April 2010 to 145.37 in May 2010. Consequently, the monthly rate of inflation increased slightly by 0.25 percent. Except in the Northern Region where prices declined slightly this month (-0.31 percent), there were slight increases in the prices in the; Eastern Region (0.62 percent, comprising of two centers, Kenema (1.77 percent) and Koidu (0.18 percent); Southern Region (0.53 percent) and Western Area (0.31 percent) during the same period. Nevertheless, the composite year-on-year inflation rate (2007=100) decreased slightly by 0.98 percentage points from 17.80 percent in April 2010 to 16.82 percent in May 2010. Similarly, the year-on-year rate of inflation decreased in the Western Area from 17.82 percent in April 2010 to 17.08 percent in May 2010, in the Southern Region from 22.77 percent to 21.98 percent, in the Eastern Region from 21.17 percent to 19.91 percent and in the Northern Region from 16.87 percent to 15.11 percent during the same period.

Considering the old CPI series (1992=100), there were mixed movements in the year-on-year rate of inflation. In Freetown the year-on-year rate of inflation decreased from 18.42 percent in April 2010 to 17.85 percent in May 2010, and in Bo from 23.33 percent to 22.07 percent, and Makeni from 17.27 percent to 15.68 percent but increased in Kenema from 24.87 percent to 25.13 percent during the same period.



### FACTORS INFLUENCING CHANGES IN THE MONTHLY RATE OF INFLATION

The combined monthly CPI (2007=100) increased from 145.0 percent in April 2010 to 145.37 in May 2010 resulting in the 0.25 percent increase in the consumer price index this month. This reflects a monthly increase lower than the previous month. There was a general increase in the price level in all centers except in the Northern Region where prices decreased slightly. The general rise in the price level for May 2010 reinforces the increase in the index over the last four months following the introduction of the Goods and Services Tax (GST) in January 2010. However, the monthly movements of the various indices indicate that some measure of stability has been restored in the market as price movements follow the normal supply side effects. On a composite basis, food prices went down slightly by 0.38 as a result of slight decreases in the prices of rice, maize, fresh fish, edible oils, fresh vegetables which outweighed the increase in the prices of other food items. The only other index subgroups that slightly decreased was restaurants and hotels (1.24 percent). While these decreases were not sufficient to result in a decline in the index, they explained the decrease in the percentage increase in the monthly rate of inflation this month.

At the center level, prices increased more in Kenema (1.77 percent) than in Bo (0.53 percent), Freetown (0.31 percent) and Koidu (0.18 percent). Prices decreased slightly in Makeni (-0.31 percent) during the month of May 2010.

More information can also be obtained from our website: [www.statistics.sl](http://www.statistics.sl)

**For More Detailed Information:** Subscribe to the Detailed CPI Report, Please Contact: The Statistician General, Statistics Sierra Leone

P. O. Box 595, Tower Hill, Freetown, SIERRA LEONE Telephone: (232) 22- 223287 Call:

(232) 76 – 609989 Facsimile: (232) 22- 223897 E-Mail: [statistics@statistics.sl](mailto:statistics@statistics.sl) OR [info@statistics.sl](mailto:info@statistics.sl)

**THE ALL URBAN NATIONAL CONSUMER PRICE INDICES (2007=100) BY MAIN COICOP GROUPS**

<b>National CPI(all urban) and Year-on-Year Rates of Inflation by Main COICOP Groups (2007=100)</b>									
		May-09	Feb-10	March-10	April-10	May-10			
COICOP	WEIGHT	Month Previous Year -	Month m-3 for Current Year,	Month m-2 for Current Year	Month m-1 for Current Year	Month m for Current Year	Monthly Change	3 Months Change	12 months Change
O	a	b	c	d	e	f	g	h	i
Food and Non-Alcoholic Beverage	41.86	137.97	145.46	149.22	149.24	148.69	-0.37	2.22	7.77
Alcoholic Beverage, Tobacco and Narcotics	1.71	116.61	139.98	145.65	154.87	157.19	1.50	12.30	34.81
Clothing and Footwear	7.34	117.84	128.16	126.05	132.53	134.00	1.11	4.56	13.71
Housing, Water, Electricity, Gas and other Fuels	13.70	125.47	143.46	146.01	149.35	150.64	0.86	5.00	20.06
Furnishing, Household Equipment and Household Maintenance	5.86	115.03	137.49	144.35	152.33	153.04	0.47	11.31	33.04
Health	11.36	114.11	144.77	150.73	156.18	157.51	0.85	8.80	38.03
Transport	7.75	103.02	124.05	130.61	130.62	130.63	0.00	5.30	26.79
Communication	2.04	100.01	107.23	105.11	105.10	107.07	1.88	-0.14	7.06
Recreation and Culture	1.47	106.33	127.04	130.46	134.36	136.39	1.51	7.36	28.27
Education	2.88	102.20	113.10	113.10	113.10	113.10	0.00	0.00	10.66
Restaurant and hotels	0.92	110.91	113.66	112.40	111.78	110.39	-1.24	-2.88	-0.46
Miscellaneous G&S	3.13	115.57	131.34	132.79	144.52	145.24	0.50	10.59	25.68
All items	100.00	124.44	138.90	142.40	145.00	145.37	0.25	4.65	16.82
<b>Column Description</b>									
Column O : COICOP 12 Functions									
Column A : CPI Weighting									
Column B : CPI Of The Given Month (M) For Previous Year									
Column C : CPI Of The Given Month (M -3) For Current Year									
Column D : CPI Of The Given Month (M -2) For Current Year									
Column E : CPI Of The Given Month (M -1) For Current Year									
Column G : CPI Monthly Change In % $((F-E) \times 100 / E)$									
Column H : CPI 3 Months Change In % $((F-C) \times 100 / C)$									
Column I : CPI 12 Months Change In % $((F-B) \times 100 / B)$									

Notes: The all urban National Consumer Price Index (Composite Index) measures the change in prices, on average, from month to month, of the goods and services bought by households, in Sierra Leone including all expenditure groups and both families and single persons. The index includes sampled outlets from five urban towns representing the four geographic regions of the country; Kenema and Koidu were purposefully selected to represent the Eastern province, Bo represents the Southern Province, Makeni represents the Northern Province while Freetown represents the Western Area. The weights applied in the computation of the composite index were obtained from the 2003/2004 Sierra Leone Integrated Household Survey (SLIHS) with the weights updated to May 2007 and prices referenced to the same period. The weights refer to the total urban household consumption in the entire country and the urban towns selected for price data collection represents about 80 percent of all urban household consumption. Hence the index is herein referred to as the all urban National Index. The basket consist of 400 goods and service popularly consumed by all inhabitants of Sierra Leone. These items are divided into the 12 functions of the classification of Individual Consumption by Purpose (COICOP). All prices collected are the prevailing retail market prices from six (6) markets in the Greater Freetown area, three (3) Markets in Bo Town, three (3) markets in Kenema Town, three markets (3) in Koidu and two (2) markets in Makeni Town for weekly prices. Other outlets are used for monthly items whose prices are less likely to fluctuate rapidly. Geometric mean formula is used to compute the mean of prices observed for each product by elementary aggregate (group of similar products)

**FREETOWN CONSUMER PRICE INDEX (1992=100)-OLD SERIES**

	Food	Beverage & Tobacco	Rent Rates & Repairs	Fuel & Power	Cloth & Footwear	Furniture Goods	Expan. Goods & services	Personal Transport	Tran sport & Comm.	Med. & Medicare	Education & Stationery	Enter & Recreation	Personal Goods & Services	All Items	Monthly % Change	Annual % Change
<b>Wgts</b>	<b>54.13</b>	<b>3.63</b>	<b>3.92</b>	<b>6.51</b>	<b>7.35</b>	<b>1.86</b>	<b>2.46</b>	<b>1.16</b>	<b>4.77</b>	<b>3.45</b>	<b>4.11</b>	<b>3.72</b>	<b>2.93</b>	<b>100</b>		
<b>Jan-07</b>	445.68	17.52	44.91	70.70	33.85	10.39	23.87	15.96	53.00	25.98	20.42	29.35	14.92	<b>806.55</b>	1.53	9.81
Feb	464.13	17.13	44.91	71.01	34.33	10.29	25.03	16.07	53.00	26.22	20.46	29.61	15.03	<b>827.10</b>	2.55	12.80
Mar	450.50	17.21	44.84	68.29	34.43	10.57	23.86	15.76	52.95	26.21	20.49	32.60	15.05	<b>812.77</b>	-1.73	10.10
Apr.	453.04	17.63	44.84	70.69	34.57	11.39	25.23	15.80	52.87	26.51	20.64	34.82	15.97	<b>824.00</b>	1.38	11.44
May	451.1	17.74	44.84	67.6	34.62	11.28	27.65	15.88	53.00	26.51	20.99	34.52	16.1	<b>821.84</b>	-0.26	10.02
June	455.65	17.55	46.53	69.24	34.38	11.24	27.62	15.96	53.00	26.51	21.36	34.85	17.00	<b>830.90</b>	1.10	10.22
July	451.32	17.78	46.49	72.21	34.58	11.26	28.33	16.09	51.36	26.54	20.77	34.99	17.07	<b>828.79</b>	-0.25	9.13
Aug	477.51	19.46	46.41	72.67	34.76	11.67	28.76	16.08	51.36	26.56	20.78	34.99	18.48	<b>859.50</b>	3.71	12.13
Sept	483.44	19.53	47.69	73.58	34.80	11.84	31.95	16.26	51.36	25.56	20.75	34.99	18.75	<b>870.49</b>	1.28	11.53
Oct	505.70	18.12	48.95	74.82	34.45	12.54	28.25	16.13	51.57	25.55	21.31	34.80	18.81	<b>891.01</b>	2.36	13.34
Nov	508.69	18.11	48.96	79.41	35.01	12.55	28.63	17.54	56.47	25.55	22.16	34.80	18.96	<b>905.83</b>	1.66	15.16
Dec	502.57	18.12	48.97	83.04	33.75	12.23	28.87	17.79	56.78	25.52	22.62	34.58	18.90	<b>903.72</b>	-0.23	13.76
<b>Jan-08</b>	516.87	19.28	49.01	75.69	33.77	12.22	31.14	17.99	56.78	25.45	22.56	34.61	19.18	<b>914.53</b>	1.20	13.39
Feb-08	533.38	19.31	49.01	83.43	33.51	12.19	30.78	18.00	57.40	25.45	22.74	36.07	19.34	<b>940.60</b>	2.85	13.72
Mar-08	523.37	19.12	49.14	82.73	33.91	12.50	32.96	18.06	57.55	25.49	22.67	35.82	19.45	<b>932.77</b>	-0.83	14.77
April	538.90	19.41	49.14	79.81	33.79	12.09	29.86	17.99	57.53	25.45	22.66	36.36	19.22	<b>942.20</b>	1.01	14.35
May-08	543.55	19.26	49.01	83.62	34.31	12.56	30.56	19.92	62.44	25.50	23.41	36.11	19.71	<b>959.97</b>	1.89	16.81
June-08	550.56	19.46	49.01	83.59	34.64	12.69	31.06	19.94	61.42	25.93	23.99	36.12	20.30	<b>968.74</b>	0.91	16.59
Jul-08	559.21	19.43	49.01	83.59	34.38	12.65	32.13	19.96	60.78	25.91	23.99	36.32	20.34	<b>977.70</b>	0.93	17.97
Aug-08	570.42	20.08	49.01	83.78	35.49	12.89	32.53	20.07	60.78	25.93	23.99	36.47	20.65	<b>992.10</b>	1.47	15.43
Sept-08	603.05	20.24	49.02	79.40	35.42	13.07	30.10	20.25	60.78	25.93	24.54	36.39	20.64	<b>1018.84</b>	2.70	17.04
Oct-08	621.73	20.28	49.04	71.00	34.99	13.00	30.05	17.69	51.52	27.24	24.32	36.30	20.84	<b>1018.03</b>	-0.08	14.26
Nov-08	623.0	20.92	49.04	66.70	34.52	13.02	28.45	17.49	51.61	27.00	23.02	36.99	21.39	<b>1013.14</b>	-0.48	11.85
Dec-08	629.85	21.15	54.94	56.87	35.07	13.06	30.14	16.15	45.89	27.32	24.05	36.15	23.74	<b>1014.39</b>	0.12	12.25
<b>Jan-09</b>	628.46	20.70	57.32	59.76	35.08	13.03	30.20	16.06	45.60	27.46	23.80	35.96	23.38	<b>1016.80</b>	0.24	11.18
Feb-09	632.06	20.30	62.22	64.14	35.43	12.98	29.32	15.70	47.26	27.46	25.24	36.86	23.30	<b>1032.27</b>	1.52	9.75
Mar-09	625.01	19.98	62.22	62.52	35.88	12.91	28.91	15.50	47.26	27.46	25.24	37.39	23.19	<b>1023.47</b>	-0.85	9.72
Apr-09	624.77	20.22	62.22	65.84	35.84	12.95	28.60	15.40	47.65	27.46	25.26	37.39	23.13	<b>1026.73</b>	0.32	8.97
May-09	623.85	19.85	62.22	65.22	36.35	12.94	28.05	15.40	47.65	27.46	25.62	37.35	23.19	<b>1025.16</b>	0.15	6.79
Jun-09	633.82	19.84	62.22	67.91	36.40	13.34	27.77	17.81	50.96	27.54	25.58	37.35	23.58	<b>1044.11</b>	1.85	7.78
Jul-09	640.20	19.90	62.22	65.86	36.68	13.56	29.35	17.81	52.25	27.54	25.54	37.64	23.55	<b>1052.10</b>	0.76	7.61
Aug-09	650.61	19.70	62.22	66.31	37.71	13.88	31.37	18.79	52.28	33.57	26.41	37.60	24.44	<b>1074.88</b>	2.17	8.34
Sept-09	680.43	19.97	62.27	67.18	39.41	14.25	33.98	19.97	52.28	35.95	28.28	37.81	25.00	<b>1116.74</b>	3.89	9.61
Oct-09	693.19	20.36	62.66	67.81	40.24	14.21	30.57	20.32	52.37	35.07	27.58	37.79	25.44	<b>1127.62</b>	0.97	10.77
Nov-09	670.86	20.39	62.66	68.72	41.58	14.40	31.81	20.27	52.90	35.50	27.68	38.60	25.88	<b>1111.27</b>	-1.45	9.69
Dec-09	677.64	20.98	64.91	69.08	41.47	14.32	32.54	20.14	53.17	35.79	28.05	38.98	26.67	<b>1123.73</b>	1.12	10.78
<b>Jan-10</b>	700.84	22.01	67.84	69.29	41.98	14.80	35.74	20.45	53.17	37.15	28.32	40.32	28.92	<b>1160.82</b>	3.30	14.16
Feb-10	734.77	22.59	67.85	73.66	43.0	14.95	35.52	21.27	57.50	38.55	28.32	42.09	30.01	<b>1210.07</b>	4.24	17.22
Mar-10	733.45	21.95	67.94	71.44	42.96	14.92	35.16	21.37	56.86	39.35	28.32	42.41	30.03	<b>1206.13</b>	-0.33	17.85
Apr-10	737.23	22.72	68.01	72.18	43.70	15.20	35.53	21.62	57.36	40.99	28.52	42.43	30.37	<b>1215.85</b>	0.81	18.42
May-10	724.65	23.67	68.01	72.65	44.01	15.38	35.92	21.79	57.10	42.87	29.08	42.46	30.52	<b>1208.11</b>	-0.64	17.85