



CONSUMER PRICE INDEX (CPI) April, 2009: PRESS RELEASE

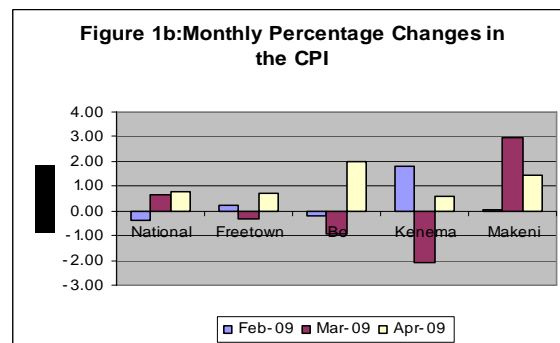
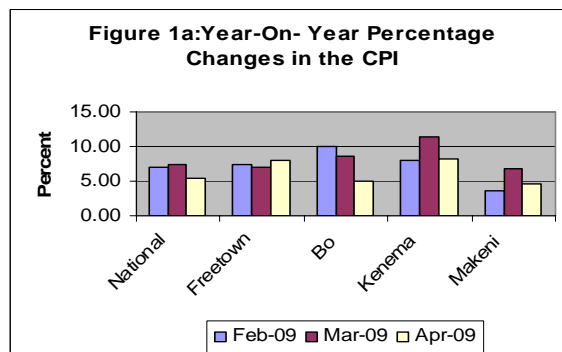
Released on Friday, May 15, 2009: at 1:00 pm

## APRIL 2009 ANNUAL INFLATION RATE DECREASES SIGNIFICANTLY

The Composite year-on-year Inflation rate (2003=100) decreased by 2.05 percentage points from 7.45 per cent in March 2009 to 5.40 per cent in April 2009. When the CPI for this month is compared with the figure for last month, there was an increase in the monthly rate of inflation for April 2009 by 0.77 per cent.

With the exception of Freetown which recorded an increase in the year-on-year rate of inflation. The year-on-year rates of inflation for all the other centers declined. In Freetown from 7.0 per cent in March 2009 4.50 per cent in April 2009. However, inflation decreased in Bo from 8.64 per cent in March 2009 to 5.0 per cent in April 2009, in Kenema from 11.5 per cent in March 2009 to 8.3 per cent in April 2009 and in Makeni from 6.9 per cent in March 2009 to 4.6 per cent in April 2009.

In the old CPI series (1992=100) decreases were recorded for all centers. The annual rates of inflation decreased in Freetown from 9.72 per cent in March 2009 to 8.97 per cent in April 2009, in Bo from 8.29 per cent in March 2009 to 6.79 per cent in April 2009, in Kenema from 11.69 per cent in March 2009 to 9.53 per cent in April 2009 and in Makeni from 9.64 per cent in March 2009 to 7.97 per cent in April 2009.



## FACTORS INFLUENCING CHANGES IN THE MONTHLY RATE OF INFLATION

The combined monthly CPI for April 2009 increased from 186.66 per cent in March 2009 to 188.09 per cent in April 2009. The increase in the CPI this month was driven by increases in the cost of food especially bread and cereals(4.05 per cent), fruit(1.78 per cent), vegetables(0.44 per cent), sugar, jam, honey, chocolate and confectionery(1.51 per cent), coffee, tea and cocoa(4.44 per cent) and mineral waters, soft drinks, fruits and vegetable juices(3.28 per cent) reinforced by increases in housing cost(3.26 per cent) products such as actual rentals paid by tenants(2.24 per cent), materials for the maintenance and repair of the dwelling (0.98 per cent), and other fuels(20.74 per cent) while the price of liquid fuels, electricity, water supply, gas remained constant. Single digit year-on-year rates of inflation were recorded in all centers during the month of April 2009 probably because, the global pressure which resulted in increase prices in April 2008 last year has eased off a little and prices for some products in the basket such as fuel, palm oil, fish, vegetables, milk, cheese and eggs, etc have fallen below their April 2008 level.

More information can also be obtained from our website: [www.statistics.sl](http://www.statistics.sl)

**For More Detailed Information:** Subscribe to the Detailed CPI Report. Please Contact: The Statistician General, Statistics Sierra Leone P. O. Box 595, Tower Hill, Freetown, SIERRA LEONE Telephone: (232) 22- 223287 Call: (232) 76 – 609989 Facsimile: (232) 22- 223897 E-Mail: [statistics@statistics.sl](mailto:statistics@statistics.sl) OR [info@statistics.sl](mailto:info@statistics.sl)

National CPI and Year-on- Year Rates of Inflation by Main COICOP Groups (2003=100)									
		Apr-08	Jan-09	Feb-09	Mar-08	Apr-09			
COICOP	WEIGHT	Month Previous Year -	Month m-3 for Current Year,	Month m-2 for Current Year	Month m-1 for Current Year	Month m for Current Year	Monthly Change	3 Months Change	12 months Change
O	a	B	C	d	E	f	g	h	i
Food and Non-Alcoholic Beverage	50.81	180.45	193.65	189.78	191.66	191.21	-0.23	-1.26	5.96
Alcoholic Beverage, Tobacco and Narcotics	2.50	146.13	145.24	142.96	143.70	145.43	1.21	0.13	-0.48
Clothing and Footwear	8.11	128.18	137.25	138.49	136.88	137.73	0.62	0.35	7.45
Housing, Water, Electricity, Gas and other Fuels	9.63	206.18	187.02	193.35	195.96	202.34	3.26	8.19	-1.86
Furnishing, Household Equipment and Household Maintenance	4.01	159.43	165.78	164.55	165.56	166.47	0.55	0.42	4.41
Health	3.55	464.76	507.44	506.67	508.38	513.44	1.00	1.18	10.47
Transport	6.40	155.24	148.74	148.49	149.63	150.50	0.58	1.18	-3.05
Communication	0.72	134.51	128.16	133.83	128.16	128.16	0.00	0.00	-4.73
Recreation and Culture	5.24	134.05	131.78	132.44	131.96	135.63	2.78	2.92	1.18
Education	1.62	101.99	114.88	114.22	110.77	120.70	8.96	5.07	18.35
Restaurant and hotels	4.26	143.08	154.33	155.04	155.47	162.67	4.63	5.40	13.69
Miscellaneous G&S	3.18	136.62	144.58	163.45	165.29	165.29	0.00	14.32	20.99
All items	100.00	178.45	186.15	185.44	186.66	188.09	0.77	1.04	5.40
<b>Column Description</b>									
Column O : COICOP 12 Functions									
Column A : CPI Weighting									
Column B : CPI Of The Given Month (M) For Previous Year									
Column C : CPI Of The Given Month (M -3) For Current Year									
Column D : CPI Of The Given Month (M -2) For Current Year									
Column E : CPI Of The Given Month (M -1) For Current Year									
Column G : CPI Monthly Change In % ((F-E) X 100 /E)									
Column H : CPI 3 Months Change In % ((F-C) X 100 /C)									
Column I: CPI 12 Months Change In % ((F-B) X 100/B).									

The Interim National CPI measures the change in prices, on average, from month to month, of the goods and services bought by most households, in Freetown, Bo, Kenema and Makeni including all expenditure groups and both families and single persons. Prices are collected for 251 items. All prices collected are the prevailing retail market prices from six (6) markets in the Greater Freetown area, three (3) Markets in Bo Town, three (3) markets in Kenema Town and two (2) markets in Makeni Town for weekly prices and other outlets for monthly items whose prices are less likely to fluctuate rapidly. The National Index was computed by aggregating the CPI for the four index towns previously published separately with different base periods. The old CPI series for Bo, Kenema, Makeni and Freetown were rebased to base year 2003. Computation methodology changed from the Modified to the Traditional Laspeyres, and transformed into the Classification of Individual Consumption by Purpose (COICOP) with 12 functions. The separate center CPIs were aggregated at the sub-class level.

**FREETOWN CONSUMER PRICE INDEX (1992=100)-OLD SERIES**

	Food	Beverage. & Tobacco	Rent Rates & Repairs	Fuel & Power	Cloth & Foot wear	Furniture Goods	Expan. Goods & services	Personal Transport	Tran sport & Comm.	Med. & Medicare	Education & Stationery	Enter & Recreation	Personal Goods & Services	All Items	Monthly % Change	Annual % Change
<b>Wgts</b>	<b>54.13</b>	<b>3.63</b>	<b>3.92</b>	<b>6.51</b>	<b>7.35</b>	<b>1.86</b>	<b>2.46</b>	<b>1.16</b>	<b>4.77</b>	<b>3.45</b>	<b>4.11</b>	<b>3.72</b>	<b>2.93</b>	<b>100</b>		
2006 Jan	408.73	16.18	39.20	64.97	32.81	7.93	24.11	13.73	46.04	24.02	16.71	24.24	15.83	734.50	0.10	13.85
Feb	410.66	15.87	39.27	59.78	33.33	8.01	25.25	13.72	46.48	24.00	16.68	24.25	15.90	<b>733.50</b>	-0.17	13.63
Mar	411.66	16.28	39.27	59.12	33.93	7.92	26.53	13.73	46.67	24.00	17.59	24.25	17.27	<b>738.23</b>	0.68	13.52
April	414.25	16.08	39.27	60.40	33.50	8.43	25.88	13.73	46.48	24.88	16.54	24.34	15.65	<b>739.42</b>	0.16	12.48
May	415.84	16.17	39.27	62.67	33.91	8.44	24.47	13.73	49.97	25.16	16.16	24.71	15.68	746.99	1.02	11.75
June	424.41	15.97	39.25	57.14	33.32	8.12	25.34	14.76	50.69	24.00	18.90	25.76	16.16	<b>753.84</b>	0.92	9.24
July	421.09	15.89	39.25	64.86	33.40	9.28	25.00	15.45	50.43	24.68	18.80	26.00	15.36	<b>759.42</b>	0.74	7.24
Aug	430.53	15.88	40.29	60.30	32.57	9.34	24.88	15.62	50.43	24.67	18.80	26.49	15.70	<b>766.49</b>	0.93	6.21
Sept	441.38	16.01	43.43	62.39	33.82	9.92	22.95	16.63	51.29	24.70	17.54	26.50	14.92	<b>780.48</b>	1.82	6.63
Oct	439.29	16.07	43.43	64.42	33.89	10.03	25.16	15.25	52.96	25.13	19.06	26.53	14.96	<b>786.15</b>	0.73	6.91
Nov	436.56	16.14	43.43	64.87	33.96	10.53	24.71	15.44	52.98	25.13	20.41	26.62	15.84	<b>786.61</b>	0.06	6.73
Dec	434.66	17.36	44.89	69.54	33.69	10.37	23.96	15.84	52.98	25.68	22.13	26.75	16.55	<b>794.39</b>	0.99	8.26
<b>2007 Jan</b>	<b>445.68</b>	<b>17.52</b>	<b>44.91</b>	<b>70.70</b>	<b>33.85</b>	<b>10.39</b>	<b>23.87</b>	<b>15.96</b>	<b>53.00</b>	<b>25.98</b>	<b>20.42</b>	<b>29.35</b>	<b>14.92</b>	<b>806.55</b>	<b>1.53</b>	<b>9.81</b>
Feb	464.13	17.13	44.91	71.01	34.33	10.29	25.03	16.07	53.00	26.22	20.46	29.61	15.03	<b>827.10</b>	2.55	12.80
Mar	450.50	17.21	44.84	68.29	34.43	10.57	23.86	15.76	52.95	26.21	20.49	32.60	15.05	<b>812.77</b>	-1.73	10.10
Apr.	453.04	17.63	44.84	70.69	34.57	11.39	25.23	15.80	52.87	26.51	20.64	34.82	15.97	<b>824.00</b>	1.38	11.44
May	451.1	17.74	44.84	67.6	34.62	11.28	27.65	15.88	53.00	26.51	20.99	34.52	16.1	<b>821.84</b>	-0.26	10.02
June	455.65	17.55	46.53	69.24	34.38	11.24	27.62	15.96	53.00	26.51	21.36	34.85	17.00	<b>830.90</b>	1.10	10.22
July	451.32	17.78	46.49	72.21	34.58	11.26	28.33	16.09	51.36	26.54	20.77	34.99	17.07	<b>828.79</b>	-0.25	9.13
August	477.51	19.46	46.41	72.67	34.76	11.67	28.76	16.08	51.36	26.56	20.78	34.99	18.48	<b>859.50</b>	3.71	12.13
Sept	483.44	19.53	47.69	73.58	34.80	11.84	31.95	16.26	51.36	25.56	20.75	34.99	18.75	<b>870.49</b>	1.28	11.53
October	505.70	18.12	48.95	74.82	34.45	12.54	28.25	16.13	51.57	25.55	21.31	34.80	18.81	<b>891.01</b>	2.36	13.34
Nov	508.69	18.11	48.96	79.41	35.01	12.55	28.63	17.54	56.47	25.55	22.16	34.80	18.96	<b>905.83</b>	1.66	15.16
Dec	502.57	18.12	48.97	83.04	33.75	12.23	28.87	17.79	56.78	25.52	22.62	34.58	18.90	<b>903.72</b>	-0.23	13.76
<b>Jan-08</b>	<b>516.87</b>	<b>19.28</b>	<b>49.01</b>	<b>75.69</b>	<b>33.77</b>	<b>12.22</b>	<b>31.14</b>	<b>17.99</b>	<b>56.78</b>	<b>25.45</b>	<b>22.56</b>	<b>34.61</b>	<b>19.18</b>	<b>914.53</b>	<b>1.20</b>	<b>13.39</b>
Feb-08	533.38	19.31	49.01	83.43	33.51	12.19	30.78	18.00	57.40	25.45	22.74	36.07	19.34	<b>940.60</b>	2.85	13.72
Mar-08	523.37	19.12	49.14	82.73	33.91	12.50	32.96	18.06	57.55	25.49	22.67	35.82	19.45	<b>932.77</b>	-0.83	14.77
April	538.90	19.41	49.14	79.81	33.79	12.09	29.86	17.99	57.53	25.45	22.66	36.36	19.22	<b>942.20</b>	1.01	14.35
May-08	543.55	19.26	49.01	83.62	34.31	12.56	30.56	19.92	62.44	25.50	23.41	36.11	19.71	959.97	1.89	16.81
June-08	550.56	19.46	49.01	83.59	34.64	12.69	31.06	19.94	61.42	25.93	23.99	36.12	20.30	968.74	0.91	16.59
Jul-08	559.21	19.43	49.01	83.59	34.38	12.65	32.13	19.96	60.78	25.91	23.99	36.32	20.34	977.70	0.93	17.97
Aug-08	570.42	20.08	49.01	83.78	35.49	12.89	32.53	20.07	60.78	25.93	23.99	36.47	20.65	992.10	1.47	15.43
Sept-08	603.05	20.24	49.02	79.40	35.42	13.07	30.10	20.25	60.78	25.93	24.54	36.39	20.64	1018.84	2.70	17.04
Oct-08	621.73	20.28	49.04	71.00	34.99	13.00	30.05	17.69	51.52	27.24	24.32	36.30	20.84	1018.03	-0.08	14.26
Nov-08	623.0	20.92	49.04	66.70	34.52	13.02	28.45	17.49	51.61	27.00	23.02	36.99	21.39	1013.14	-0.48	11.85
<b>Dec-08</b>	<b>629.85</b>	<b>21.15</b>	<b>54.94</b>	<b>56.87</b>	<b>35.07</b>	<b>13.06</b>	<b>30.14</b>	<b>16.15</b>	<b>45.89</b>	<b>27.32</b>	<b>24.05</b>	<b>36.15</b>	<b>23.74</b>	<b>1014.39</b>	<b>0.12</b>	<b>12.25</b>
<b>Jan-09</b>	<b>628.46</b>	<b>20.70</b>	<b>57.32</b>	<b>59.76</b>	<b>35.08</b>	<b>13.03</b>	<b>30.20</b>	<b>16.06</b>	<b>45.60</b>	<b>27.46</b>	<b>23.80</b>	<b>35.96</b>	<b>23.38</b>	<b>1016.80</b>	<b>0.24</b>	<b>11.18</b>
Feb-09	632.06	20.30	62.22	64.14	35.43	12.98	29.32	15.70	47.26	27.46	25.24	36.86	23.30	<b>1032.27</b>	1.52	9.75
Mar-09	625.01	19.98	62.22	62.52	35.88	12.91	28.91	15.50	47.26	27.46	25.24	37.39	23.19	1023.47	-0.85	9.72
Apr-09	624.77	20.22	62.22	65.84	35.84	12.95	28.60	15.40	47.65	27.46	25.26	37.39	23.13	1026.73	0.32	8.97