



CONSUMER PRICE INDEX (CPI) MAY, 2009: PRESS RELEASE

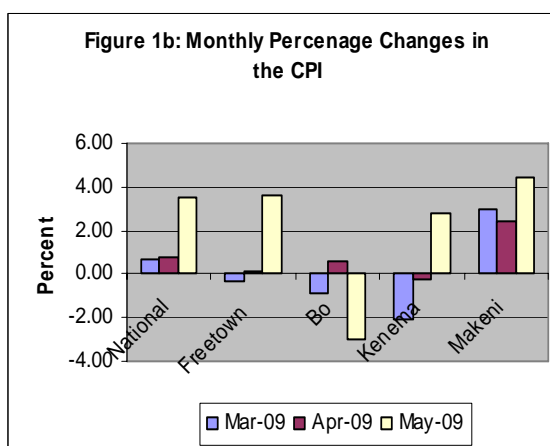
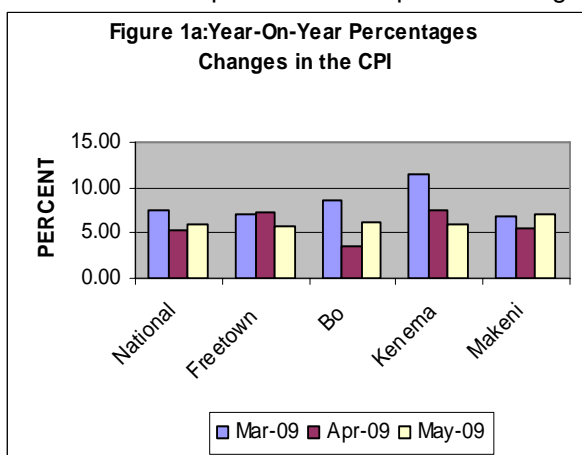
Released on Monday, June 15, 2009: at 1:00 pm

MAY 2009 ANNUAL INFLATION RATE INCREASED SLIGHTLY

The Composite year-on-year Inflation rate (2003=100) increased by 0.55 percentage points from 5.40 per cent in April 2009 to 5.95 percent in May 2009. The monthly rate of inflation for May 2009 increased significantly by 3.53 per cent, when the CPI for this month is compared with the CPI figure for April 2009.

Movements in the year-on-year rate of inflation in the different centers were mixed. From April 2009 to May 2009, the year-on-year rates of inflation increased in Bo from 3.57 percent to 6.10 percent and in Makeni from 5.5 percent to 7.0 percent but decreased in Freetown from 7.3 percent to 5.7 percent and in Kenema from 7.4 percent to 6.0 percent during the same period.

Considering the old CPI series (1992=100), there were similar movements in the CPI. On one hand the Freetown year-on-year rate of inflation decreased from 8.97 percent in April to 6.79 percent in May 2009 and the Kenema inflation rate decreased from 9.53 percent in April to 6.13 percent in May 2009. On the other hand, the year-on-year rate of inflation increased in Bo from 6.79 percent in April to 6.98 percent in May 2009 and in Makeni from 7.97 percent to 8.47 percent during the same period.



FACTORS INFLUENCING CHANGES IN THE MONTHLY RATE OF INFLATION

The combined monthly CPI for April 2009 increased from 188.09 per cent in April 2009 to 194.11 per cent in May 2009 resulting in a 3.53 percent increase in inflation this month. The general rise in the price level for May 2009 is the highest since the start of the year indicating a resurgence of inflationary pressure in the economy. Significant price increases were recorded in, Bo, Kenema and Makeni which were not only limited to food prices.

For the combined CPI, increases were recorded in the indices for food (4.25 per cent) due to increases in the cost of bread and rice, vegetables, and palm oil. Additionally, there were increases in rents paid by tenants (8.16 percent) gas (2.64 percent), clothing materials (4.1 percent), small household electric appliances (7.6 per cent) and spare parts (6.82 percent).

More information can also be obtained from our website: www.statistics.sl

For More Detailed Information: Subscribe to the Detailed CPI Report. Please Contact: The Statistician General, Statistics Sierra Leone P. O. Box 595, Tower Hill, Freetown, SIERRA LEONE Telephone: (232) 22- 223287 Call: (232) 76 – 609989 Facsimile: (232) 22- 223897 E-Mail: statistics@statistics.sl OR info@statistics.sl

New Release Notification: With effect from Month ending June 2009, A new series of CPI (2007=100) with Updated Weights and basket and revised computation methodology which has been under investigation for almost two years will be introduced. Detailed methodological notes will accompany the first release.

		May-09	Feb-09	Mar-09	April-09	May-09			
COICOP	WEIGHT	Month Previous Year -	Month m-3 for Current Year,	Month m-2 for Current Year	Month m-1 for Current Year	Month m for Current Year	Monthly Change	3 Months Change	12 months Change
O	a	b	c	d	e	f	g	h	i
Food and Non-Alcoholic Beverage	50.81	185.30	189.78	191.66	191.21	199.60	4.38	5.17	7.72
Alcoholic Beverage, Tobacco and Narcotics	2.50	144.35	142.96	143.70	145.43	145.36	-0.05	1.68	0.70
Clothing and Footwear	8.11	130.22	138.49	136.88	137.73	139.47	1.26	0.71	7.10
Housing, Water, Electricity, Gas and other Fuels	9.63	212.32	193.35	195.96	202.34	208.44	3.01	7.80	-1.83
Furnishing, Household Equipment and Household Maintenance	4.01	160.31	164.55	165.56	166.47	167.03	0.34	1.51	4.20
Health	3.55	479.88	506.67	508.38	513.44	515.39	0.38	1.72	7.40
Transport	6.40	162.97	148.49	149.63	150.50	155.24	3.15	4.54	-4.75
Communication	0.72	134.41	133.83	128.16	128.16	128.16	0.00	-4.24	-4.65
Recreation and Culture	5.24	133.63	132.44	131.96	135.63	135.81	0.13	2.55	1.63
Education	1.62	106.61	114.22	110.77	120.70	120.18	-0.43	5.22	12.74
Restaurant and hotels	4.26	150.59	155.04	155.47	162.67	177.68	9.23	14.61	17.99
Miscellaneous G&S	3.18	141.34	163.45	165.29	165.29	165.29	0.00	1.13	16.95
All items	100.00	183.21	185.44	186.66	188.09	194.11	3.20	4.68	5.95
Column Description									
Column O : COICOP 12 Functions									
Column A : CPI Weighting									
Column B : CPI Of The Given Month (M) For Previous Year									
Column C : CPI Of The Given Month (M -3) For Current Year									
Column D : CPI Of The Given Month (M -2) For Current Year									
Column E : CPI Of The Given Month (M -1) For Current Year									
Column G : CPI Monthly Change In % $((F-E) \times 100 / E)$									
Column H : CPI 3 Months Change In % $((F-C) \times 100 / C)$									
Column I: CPI 12 Months Change In % $((F-B) \times 100 / B)$.									

The Interim National CPI measures the change in prices, on average, from month to month, of the goods and services bought by most households, in Freetown, Bo, Kenema and Makeni including all expenditure groups and both families and single persons. Prices are collected for 251 items. All prices collected are the prevailing retail market prices from six (6) markets in the Greater Freetown area, three (3) Markets in Bo Town, three (3) markets in Kenema Town and two (2) markets in Makeni Town for weekly prices and other outlets for monthly items whose prices are less likely to fluctuate rapidly. The National Index was computed by aggregating the CPI for the four index towns previously published separately with different base periods. The old CPI series for Bo, Kenema, Makeni and Freetown were rebased to base year 2003. Computation methodology changed from the Modified to the Traditional Laspeyres, and transformed into the Classification of Individual Consumption by Purpose (COICOP) with 12 functions. The separate center CPIs were aggregated at the sub-class level.

FREETOWN CONSUMER PRICE INDEX (1992=100)-OLD SERIES

	Food	Beverage & Tobacco	Rent Rates & Repairs	Fuel & Power	Cloth & Footwear	Furniture Goods	Expan. Goods & services	Personal Transport	Transport & Comm.	Med. & Medicare	Education & Stationery	Enter & Recreation	Personal Goods & Services	All Items	Monthly % Change	Annual % Change
Wgts	54.13	3.63	3.92	6.51	7.35	1.86	2.46	1.16	4.77	3.45	4.11	3.72	2.93	100		
2006 Jan	408.73	16.18	39.20	64.97	32.81	7.93	24.11	13.73	46.04	24.02	16.71	24.24	15.83	734.50	0.10	13.85
Feb	410.66	15.87	39.27	59.78	33.33	8.01	25.25	13.72	46.48	24.00	16.68	24.25	15.90	733.50	-0.17	13.63
Mar	411.66	16.28	39.27	59.12	33.93	7.92	26.53	13.73	46.67	24.00	17.59	24.25	17.27	738.23	0.68	13.52
April	414.25	16.08	39.27	60.40	33.50	8.43	25.88	13.73	46.48	24.88	16.54	24.34	15.65	739.42	0.16	12.48
May	415.84	16.17	39.27	62.67	33.91	8.44	24.47	13.73	49.97	25.16	16.16	24.71	15.68	746.99	1.02	11.75
June	424.41	15.97	39.25	57.14	33.32	8.12	25.34	14.76	50.69	24.00	18.90	25.76	16.16	753.84	0.92	9.24
July	421.09	15.89	39.25	64.86	33.40	9.28	25.00	15.45	50.43	24.68	18.80	26.00	15.36	759.42	0.74	7.24
Aug	430.53	15.88	40.29	60.30	32.57	9.34	24.88	15.62	50.43	24.67	18.80	26.49	15.70	766.49	0.93	6.21
Sept	441.38	16.01	43.43	62.39	33.82	9.92	22.95	16.63	51.29	24.70	17.54	26.50	14.92	780.48	1.82	6.63
Oct	439.29	16.07	43.43	64.42	33.89	10.03	25.16	15.25	52.96	25.13	19.06	26.53	14.96	786.15	0.73	6.91
Nov	436.56	16.14	43.43	64.87	33.96	10.53	24.71	15.44	52.98	25.13	20.41	26.62	15.84	786.61	0.06	6.73
Dec	434.66	17.36	44.89	69.54	33.69	10.37	23.96	15.84	52.98	25.68	22.13	26.75	16.55	794.39	0.99	8.26
2007 Jan	445.68	17.52	44.91	70.70	33.85	10.39	23.87	15.96	53.00	25.98	20.42	29.35	14.92	806.55	1.53	9.81
Feb	464.13	17.13	44.91	71.01	34.33	10.29	25.03	16.07	53.00	26.22	20.46	29.61	15.03	827.10	2.55	12.80
Mar	450.50	17.21	44.84	68.29	34.43	10.57	23.86	15.76	52.95	26.21	20.49	32.60	15.05	812.77	-1.73	10.10
Apr.	453.04	17.63	44.84	70.69	34.57	11.39	25.23	15.80	52.87	26.51	20.64	34.82	15.97	824.00	1.38	11.44
May	451.1	17.74	44.84	67.6	34.62	11.28	27.65	15.88	53.00	26.51	20.99	34.52	16.1	821.84	-0.26	10.02
June	455.65	17.55	46.53	69.24	34.38	11.24	27.62	15.96	53.00	26.51	21.36	34.85	17.00	830.90	1.10	10.22
July	451.32	17.78	46.49	72.21	34.58	11.26	28.33	16.09	51.36	26.54	20.77	34.99	17.07	828.79	-0.25	9.13
August	477.51	19.46	46.41	72.67	34.76	11.67	28.76	16.08	51.36	26.56	20.78	34.99	18.48	859.50	3.71	12.13
Sept	483.44	19.53	47.69	73.58	34.80	11.84	31.95	16.26	51.36	25.56	20.75	34.99	18.75	870.49	1.28	11.53
October	505.70	18.12	48.95	74.82	34.45	12.54	28.25	16.13	51.57	25.55	21.31	34.80	18.81	891.01	2.36	13.34
Nov	508.69	18.11	48.96	79.41	35.01	12.55	28.63	17.54	56.47	25.55	22.16	34.80	18.96	905.83	1.66	15.16
Dec	502.57	18.12	48.97	83.04	33.75	12.23	28.87	17.79	56.78	25.52	22.62	34.58	18.90	903.72	-0.23	13.76
Jan-08	516.87	19.28	49.01	75.69	33.77	12.22	31.14	17.99	56.78	25.45	22.56	34.61	19.18	914.53	1.20	13.39
Feb-08	533.38	19.31	49.01	83.43	33.51	12.19	30.78	18.00	57.40	25.45	22.74	36.07	19.34	940.60	2.85	13.72
Mar-08	523.37	19.12	49.14	82.73	33.91	12.50	32.96	18.06	57.55	25.49	22.67	35.82	19.45	932.77	-0.83	14.77
April	538.90	19.41	49.14	79.81	33.79	12.09	29.86	17.99	57.53	25.45	22.66	36.36	19.22	942.20	1.01	14.35
May-08	543.55	19.26	49.01	83.62	34.31	12.56	30.56	19.92	62.44	25.50	23.41	36.11	19.71	959.97	1.89	16.81
June-08	550.56	19.46	49.01	83.59	34.64	12.69	31.06	19.94	61.42	25.93	23.99	36.12	20.30	968.74	0.91	16.59
Jul-08	559.21	19.43	49.01	83.59	34.38	12.65	32.13	19.96	60.78	25.91	23.99	36.32	20.34	977.70	0.93	17.97
Aug-08	570.42	20.08	49.01	83.78	35.49	12.89	32.53	20.07	60.78	25.93	23.99	36.47	20.65	992.10	1.47	15.43
Sept-08	603.05	20.24	49.02	79.40	35.42	13.07	30.10	20.25	60.78	25.93	24.54	36.39	20.64	1018.84	2.70	17.04
Oct-08	621.73	20.28	49.04	71.00	34.99	13.00	30.05	17.69	51.52	27.24	24.32	36.30	20.84	1018.03	-0.08	14.26
Nov-08	623.0	20.92	49.04	66.70	34.52	13.02	28.45	17.49	51.61	27.00	23.02	36.99	21.39	1013.14	-0.48	11.85
Dec-08	629.85	21.15	54.94	56.87	35.07	13.06	30.14	16.15	45.89	27.32	24.05	36.15	23.74	1014.39	0.12	12.25
Jan-09	628.46	20.70	57.32	59.76	35.08	13.03	30.20	16.06	45.60	27.46	23.80	35.96	23.38	1016.80	0.24	11.18
Feb-09	632.06	20.30	62.22	64.14	35.43	12.98	29.32	15.70	47.26	27.46	25.24	36.86	23.30	1032.27	1.52	9.75
Mar-09	625.01	19.98	62.22	62.52	35.88	12.91	28.91	15.50	47.26	27.46	25.24	37.39	23.19	1023.47	-0.85	9.72
Apr-09	624.77	20.22	62.22	65.84	35.84	12.95	28.60	15.40	47.65	27.46	25.26	37.39	23.13	1026.73	0.32	8.97
May-09	623.85	19.85	62.22	65.22	36.35	12.94	28.05	15.40	47.65	27.46	25.62	37.35	23.19	1025.16	0.15	6.79