



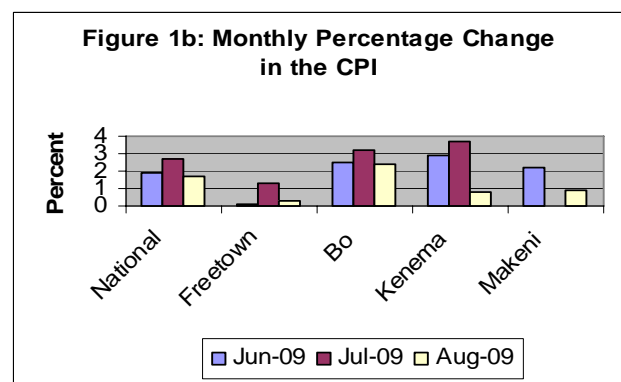
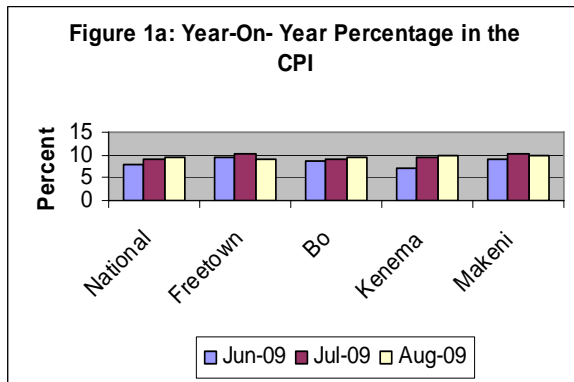
CONSUMER PRICE INDEX (CPI) AUGUST, 2009: PRESS RELEASE

Released on Monday, September 14, 2009: at 1:00 pm

AUGUST 2009 MONTHLY INFLATION RATE INCREASED MODERATELY

The monthly rate of inflation for the composite index (2003=100) increased by 1.66 per cent, when the CPI for August 2009 is compared with the CPI figure for July 2009. Similarly, the monthly rate of inflation increased in Freetown (0.3 percent), Bo (2.41 percent), Kenema (0.8 percent) and Makeni (0.95 per cent) during the same period. The composite year-on-year inflation rate (2003=100) increased by 0.53 percentage point from 9.13 per cent in July 2009 to 9.66 per cent in August 2009. There were mixed upward movements in the year-on-year rates of inflation. On the one hand; the year-on-year rates of inflation increased in Bo from 8.90 percent in July 2009 to 9.53 percent in August 2009 and in Kenema from 9.4 percent to 9.7 percent during the same period. On the other hand, the year-on-year rates of inflation decreased in Freetown from 10.1 per to 9.1 per cent and in Makeni from 10.3 per cent to 10.0 per cent during the same period.

Considering the old CPI series (1992=100), there were upward movements in the CPI in all centers. In Freetown the year-on-year rate of inflation increased from 7.61 per cent in July 2009 to 8.34 in August 2009, in Bo from 8.35 per cent in July 2009 to 8.56 per cent in August 2009, in Kenema from 7.49 per cent in July 2009 to 7.93 per cent in August 2009 and in Makeni from 8.95 per cent in July 2009 to 10.16 per cent during the same period.



FACTORS INFLUENCING CHANGES IN THE MONTHLY RATE OF INFLATION

The combined monthly CPI for August 2009 increased from 203.05 per cent in July 2009 to 206.42 per cent in August 2009 resulting in a 1.66 percent increase in inflation this month. The general rise in the price level for August 2009 reinforces the increase in the index last month indicating a build up of inflationary pressure in the economy.

The increase in the CPI this month was driven by increases in the cost of food especially fish, oils and fats, sugar etc There were also increases in the price of non-food products such as tobacco, narcotics, footwear, household textiles, telephone services, medical services, hairdressing services, stationery, gas, clothing and non-durable household goods.

More information can also be obtained from our website: www.statistics.sl
For More Detailed Information: Subscribe to the Detailed CPI Report: Please Contact: The Statistician General, Statistics Sierra Leone P. O. Box 595, Tower Hill, Freetown, SIERRA LEONE Telephone: (232) 22- 223287 Call: (232) 76 – 609989 Facsimile: (232) 22- 223897 E-Mail: statistics@statistics.sl OR info@statistics.sl

		Aug-08	May-09	Jun-09	Jul-09	Aug-09			
COICOP	WEIGHT	Month Previous Year -	Month m-3 for Current Year,	Month m-2 for Current Year	Month m-1 for Current Year	Month m for Current Year	Monthly Change	3 Months Change	12 months Change
O	a	b	c	d	e	f	g	h	i
Food and Non-Alcoholic Beverage	51.02	190.87	199.60	202.40	208.24	210.22	0.95	5.32	10.14
Alcoholic Beverage, Tobacco and Narcotics	2.50	145.70	145.36	146.54	149.20	151.06	1.25	3.93	3.68
Clothing and Footwear	8.07	134.95	139.47	140.35	142.54	141.03	-1.06	1.12	4.51
Housing, Water, Electricity, Gas and other Fuels	9.82	206.97	208.44	215.49	217.02	218.46	0.67	4.81	5.55
Furnishing, Household Equipment and Household Maintenance	4.01	162.87	167.03	169.74	171.95	174.62	1.55	4.54	7.21
Health	3.57	487.98	515.39	527.58	529.97	550.08	3.79	6.73	12.73
Transport	5.95	178.20	155.24	165.35	176.34	190.91	8.26	22.98	7.13
Communication	0.61	160.45	128.16	128.16	135.11	163.70	21.16	27.74	2.03
Recreation and Culture	5.29	132.58	135.81	136.40	140.33	139.48	-0.61	2.70	5.20
Education	1.63	108.52	120.18	121.27	121.72	125.86	3.40	4.73	15.98
Restaurant and Hotels	4.13	164.51	177.68	177.52	196.62	202.80	3.14	14.13	23.27
Miscellaneous G&S	3.41	143.82	165.29	171.11	171.54	169.20	-1.36	2.36	17.65
All items	100.00	188.23	194.11	197.73	203.05	206.42	1.66	6.34	9.66

Column Description

Column O : COICOP 12 Functions

Column A : CPI Weighting

Column B : CPI Of The Given Month (M) For Previous Year

Column C : CPI Of The Given Month (M -3) For Current Year

Column D : CPI Of The Given Month (M -2) For Current Year

Column E : CPI Of The Given Month (M -1) For Current Year

Column G : CPI Monthly Change In % $((F-E) \times 100 / E)$

Column H : CPI 3 Months Change In % $((F-C) \times 100 / C)$

Column I: CPI 12 Months Change In % $((F-B) \times 100 / B)$

The Interim National CPI measures the change in prices, on average, from month to month, of the goods and services bought by most households, in Freetown, Bo, Kenema and Makeni including all expenditure groups and both families and single persons. Prices are collected for 251 items. All prices collected are the prevailing retail market prices from six (6) markets in the Greater Freetown area, three (3) Markets in Bo Town, three (3) markets in Kenema Town and two (2) markets in Makeni Town for weekly prices and other outlets for monthly items whose prices are less likely to fluctuate rapidly. The National Index was computed by aggregating the CPI for the four index towns previously published separately with different base periods. The old CPI series for Bo, Kenema, Makeni and Freetown were rebased to base year 2003. Computation methodology changed from the Modified to the Traditional Laspeyres, and transformed into the Classification of Individual Consumption by Purpose (COICOP) with 12 functions. The separate center CPIs were aggregated at the sub-class level.

FREETOWN CONSUMER PRICE INDEX (1992=100)-OLD SERIES

	Food	Beverage. & Tobacco	Rent Rates & Repairs	Fuel & Power	Cloth & Footwear	Furniture Goods	Expan. Goods & services	Personal Transport	Transport & Comm.	Med. & Medicare	Education & Stationery	Enter & Recreation	Personal Goods & Services	All Items	Monthly % Change	Annual % Change
Wgts	54.13	3.63	3.92	6.51	7.35	1.86	2.46	1.16	4.77	3.45	4.11	3.72	2.93	100		
2006 Jan	408.73	16.18	39.20	64.97	32.81	7.93	24.11	13.73	46.04	24.02	16.71	24.24	15.83	734.50	0.10	13.85
Feb	410.66	15.87	39.27	59.78	33.33	8.01	25.25	13.72	46.48	24.00	16.68	24.25	15.90	733.50	-0.17	13.63
Mar	411.66	16.28	39.27	59.12	33.93	7.92	26.53	13.73	46.67	24.00	17.59	24.25	17.27	738.23	0.68	13.52
April	414.25	16.08	39.27	60.40	33.50	8.43	25.88	13.73	46.48	24.88	16.54	24.34	15.65	739.42	0.16	12.48
May	415.84	16.17	39.27	62.67	33.91	8.44	24.47	13.73	49.97	25.16	16.16	24.71	15.68	746.99	1.02	11.75
June	424.41	15.97	39.25	57.14	33.32	8.12	25.34	14.76	50.69	24.00	18.90	25.76	16.16	753.84	0.92	9.24
July	421.09	15.89	39.25	64.86	33.40	9.28	25.00	15.45	50.43	24.68	18.80	26.00	15.36	759.42	0.74	7.24
Aug	430.53	15.88	40.29	60.30	32.57	9.34	24.88	15.62	50.43	24.67	18.80	26.49	15.70	766.49	0.93	6.21
Sept	441.38	16.01	43.43	62.39	33.82	9.92	22.95	16.63	51.29	24.70	17.54	26.50	14.92	780.48	1.82	6.63
Oct	439.29	16.07	43.43	64.42	33.89	10.03	25.16	15.25	52.96	25.13	19.06	26.53	14.96	786.15	0.73	6.91
Nov	436.56	16.14	43.43	64.87	33.96	10.53	24.71	15.44	52.98	25.13	20.41	26.62	15.84	786.61	0.06	6.73
Dec	434.66	17.36	44.89	69.54	33.69	10.37	23.96	15.84	52.98	25.68	22.13	26.75	16.55	794.39	0.99	8.26
2007 Jan	445.68	17.52	44.91	70.70	33.85	10.39	23.87	15.96	53.00	25.98	20.42	29.35	14.92	806.55	1.53	9.81
Feb	464.13	17.13	44.91	71.01	34.33	10.29	25.03	16.07	53.00	26.22	20.46	29.61	15.03	827.10	2.55	12.80
Mar	450.50	17.21	44.84	68.29	34.43	10.57	23.86	15.76	52.95	26.21	20.49	32.60	15.05	812.77	-1.73	10.10
Apr.	453.04	17.63	44.84	70.69	34.57	11.39	25.23	15.80	52.87	26.51	20.64	34.82	15.97	824.00	1.38	11.44
May	451.1	17.74	44.84	67.6	34.62	11.28	27.65	15.88	53.00	26.51	20.99	34.52	16.1	821.84	-0.26	10.02
June	455.65	17.55	46.53	69.24	34.38	11.24	27.62	15.96	53.00	26.51	21.36	34.85	17.00	830.90	1.10	10.22
July	451.32	17.78	46.49	72.21	34.58	11.26	28.33	16.09	51.36	26.54	20.77	34.99	17.07	828.79	-0.25	9.13
August	477.51	19.46	46.41	72.67	34.76	11.67	28.76	16.08	51.36	26.56	20.78	34.99	18.48	859.50	3.71	12.13
Sept	483.44	19.53	47.69	73.58	34.80	11.84	31.95	16.26	51.36	25.56	20.75	34.99	18.75	870.49	1.28	11.53
October	505.70	18.12	48.95	74.82	34.45	12.54	28.25	16.13	51.57	25.55	21.31	34.80	18.81	891.01	2.36	13.34
Nov	508.69	18.11	48.96	79.41	35.01	12.55	28.63	17.54	56.47	25.55	22.16	34.80	18.96	905.83	1.66	15.16
Dec	502.57	18.12	48.97	83.04	33.75	12.23	28.87	17.79	56.78	25.52	22.62	34.58	18.90	903.72	-0.23	13.76
Jan-08	516.87	19.28	49.01	75.69	33.77	12.22	31.14	17.99	56.78	25.45	22.56	34.61	19.18	914.53	1.20	13.39
Feb-08	533.38	19.31	49.01	83.43	33.51	12.19	30.78	18.00	57.40	25.45	22.74	36.07	19.34	940.60	2.85	13.72
Mar-08	523.37	19.12	49.14	82.73	33.91	12.50	32.96	18.06	57.55	25.49	22.67	35.82	19.45	932.77	-0.83	14.77
April	538.90	19.41	49.14	79.81	33.79	12.09	29.86	17.99	57.53	25.45	22.66	36.36	19.22	942.20	1.01	14.35
May-08	543.55	19.26	49.01	83.62	34.31	12.56	30.56	19.92	62.44	25.50	23.41	36.11	19.71	959.97	1.89	16.81
June-08	550.56	19.46	49.01	83.59	34.64	12.69	31.06	19.94	61.42	25.93	23.99	36.12	20.30	968.74	0.91	16.59
Jul-08	559.21	19.43	49.01	83.59	34.38	12.65	32.13	19.96	60.78	25.91	23.99	36.32	20.34	977.70	0.93	17.97
Aug-08	570.42	20.08	49.01	83.78	35.49	12.89	32.53	20.07	60.78	25.93	23.99	36.47	20.65	992.10	1.47	15.43
Sept-08	603.05	20.24	49.02	79.40	35.42	13.07	30.10	20.25	60.78	25.93	24.54	36.39	20.64	1018.84	2.70	17.04
Oct-08	621.73	20.28	49.04	71.00	34.99	13.00	30.05	17.69	51.52	27.24	24.32	36.30	20.84	1018.03	-0.08	14.26
Nov-08	623.0	20.92	49.04	66.70	34.52	13.02	28.45	17.49	51.61	27.00	23.02	36.99	21.39	1013.14	-0.48	11.85
Dec-08	629.85	21.15	54.94	56.87	35.07	13.06	30.14	16.15	45.89	27.32	24.05	36.15	23.74	1014.39	0.12	12.25
Jan-09	628.46	20.70	57.32	59.76	35.08	13.03	30.20	16.06	45.60	27.46	23.80	35.96	23.38	1016.80	0.24	11.18
Feb-09	632.06	20.30	62.22	64.14	35.43	12.98	29.32	15.70	47.26	27.46	25.24	36.86	23.30	1032.27	1.52	9.75
Mar-09	625.01	19.98	62.22	62.52	35.88	12.91	28.91	15.50	47.26	27.46	25.24	37.39	23.19	1023.47	-0.85	9.72
Apr-09	624.77	20.22	62.22	65.84	35.84	12.95	28.60	15.40	47.65	27.46	25.26	37.39	23.13	1026.73	0.32	8.97
May-09	623.85	19.85	62.22	65.22	36.35	12.94	28.05	15.40	47.65	27.46	25.62	37.35	23.19	1025.16	0.15	6.79
Jun-09	633.82	19.84	62.22	67.91	36.40	13.34	27.77	17.81	50.96	27.54	25.58	37.35	23.58	1044.11	1.85	7.78
Jul-09	640.20	19.90	62.22	65.86	36.68	13.56	29.35	17.81	52.25	27.54	25.54	37.64	23.55	1052.10	0.76	7.61
Aug-09	650.61	19.70	62.22	66.31	37.71	13.88	31.37	18.79	52.28	33.57	26.41	37.60	24.44	1074.88	2.17	8.34